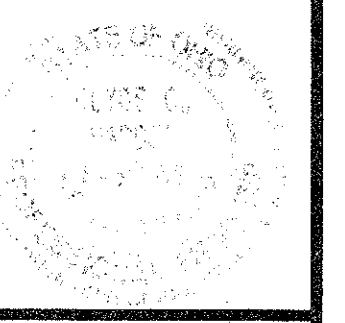


NOTE: TYPICAL SECTIONS ARE INTENDED TO SHOW GENERAL ROADWAY AND PAVEMENT FEATURES ONLY. FOR FURTHER DETAILS SEE PLAN AND PROFILES, PAVEMENT DETAILS AND CROSS-SECTIONS.



SUBMISSIONS / REVISIONS

CENTER STREET (STATE ROUTE 615)
ROADWAY IMPROVEMENTS
TYPICAL SECTIONS

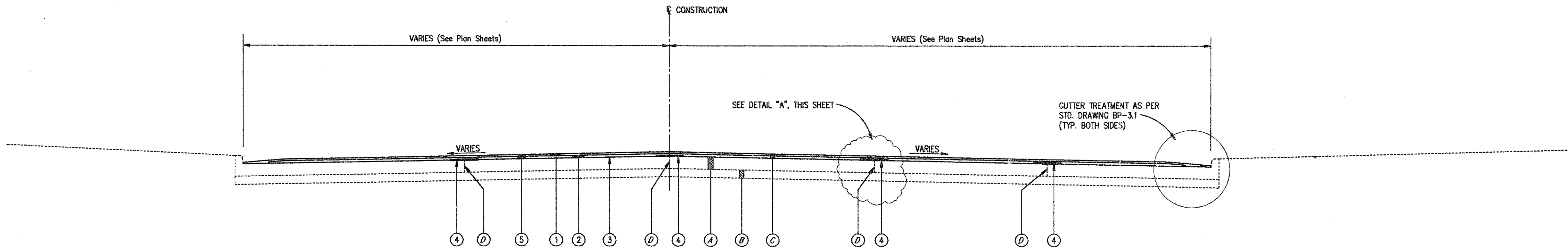
CT Consultants, Inc.
Engineers • Architects • Planners
Willoughby • Mentor • Columbus • North Canton • Youngstown

DATE:	MAY, 1999
DRAWN BY:	J.J.G.
CHECKED BY:	C.C.H.
APPROVED BY:	
SCALE:	
HOR.	1/4" = 1'-0"
VERT.	1/4" = 1'-0"
CONTRACT NO.	
98387	
SHEET NO.	OF
5	103

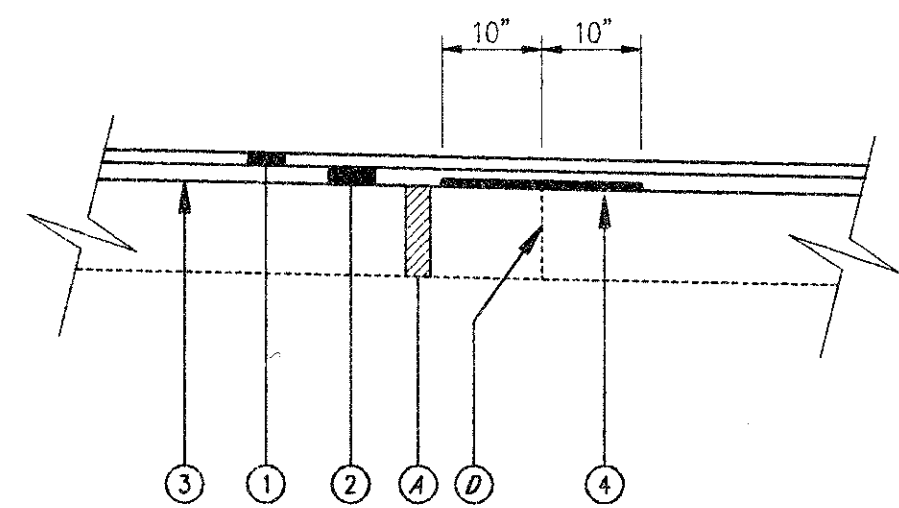
LEGEND

- ① ITEM 404 - 1-1/4" ASPHALT CONCRETE
- ② ITEM 402 - 1-3/4" ASPHALT CONCRETE
- ③ ITEM 407 - TACK COAT (0.10 Gal./S.Y.)
- ④ ITEM SPEC - PAVEMENT JOINT FABRIC, "PAVE PREP", 20" WIDE (INSTALLED OVER LONGITUDINAL JOINTS ONLY)
- ⑤ ITEM 202 - WEARING COURSE REMOVED
- ⑥ ITEM 254 - PAVEMENT PLANING, PORTLAND CEMENT CONCRETE (THICKNESS VARIES FROM 0" TO 1-1/4")
- ⑦ ITEM SPEC - RESTORATION (SEEDING & MULCHING)
- ⑧ ITEM 203 - EXCAVATION, NOT INCLUDING EMBANKMENT CONSTRUCTION
- ⑨ ITEM 203 - EMBANKMENT
- ⑩ ITEM 808 - 4" CONCRETE WALK
- ⑪ ITEM SPEC. - BIKEPATH INSTALLATION, TYPE A

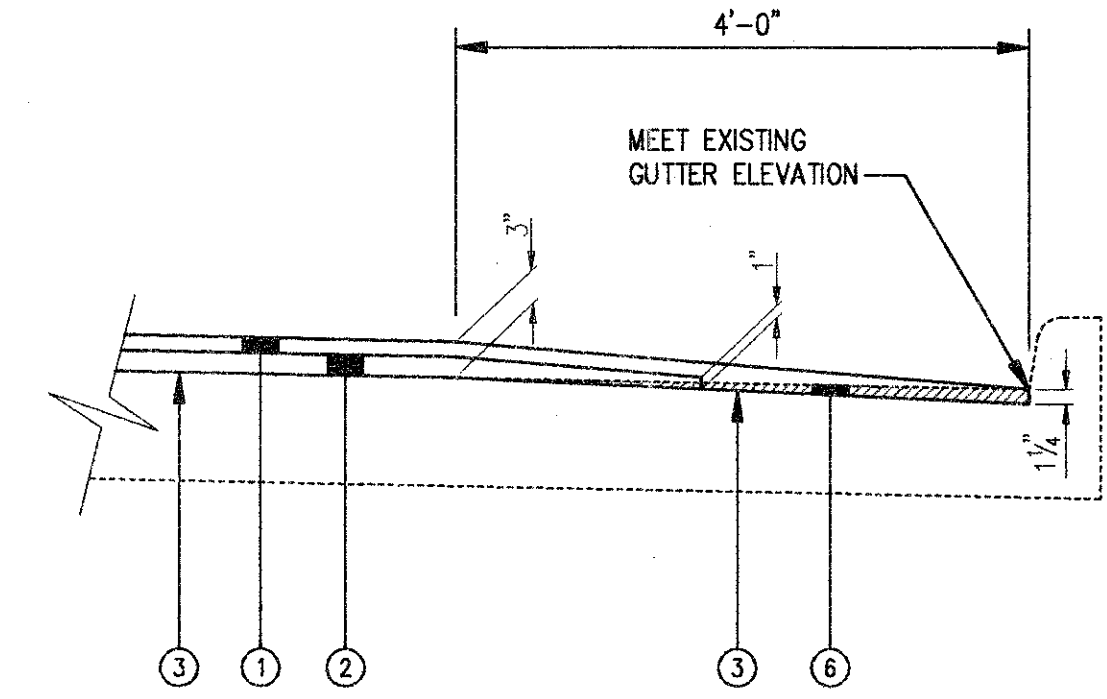
- A EXISTING 9" ITEM 451 - REINFORCED CONCRETE PAVEMENT
- B EXISTING 6" SUBBASE
- C EXISTING ASPHALT PAVEMENT (3"± AVG. THICKNESS)
- D EXISTING LONGITUDINAL PAVEMENT JOINTS



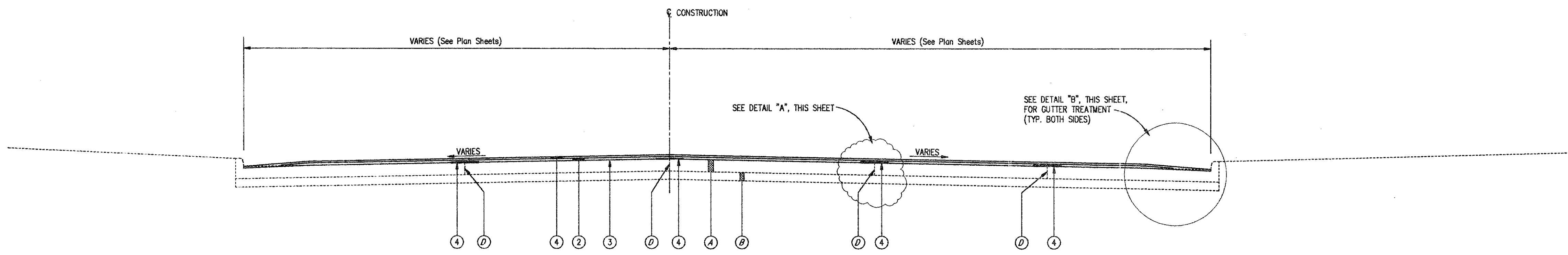
CENTER STREET TYPICAL SECTION
STA. 167+70.0 TO STA. 170+59.1± = 289.1 L.F.



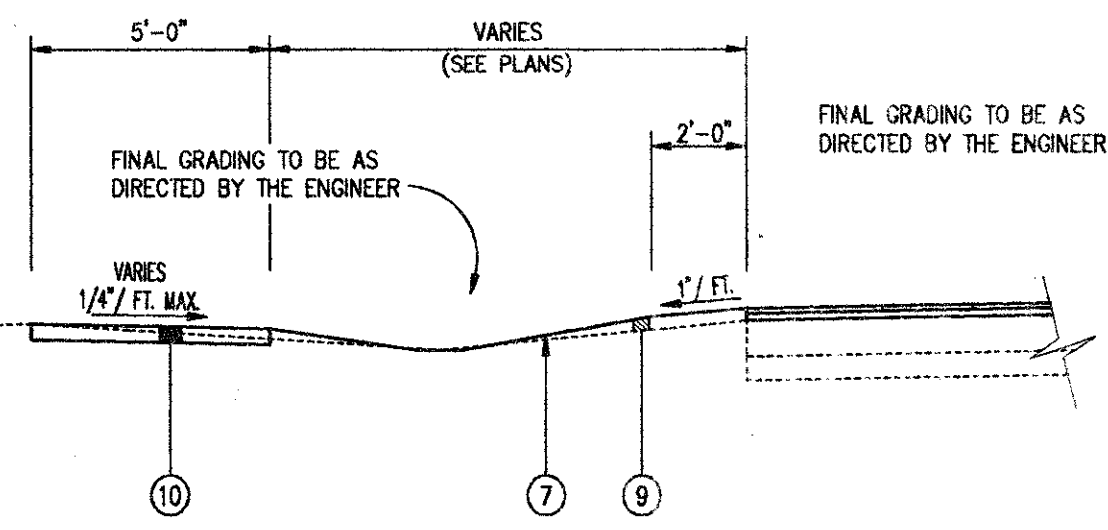
DETAIL "A"
NOTE: TYPICAL AT ALL LONGITUDINAL PAVEMENT JOINTS



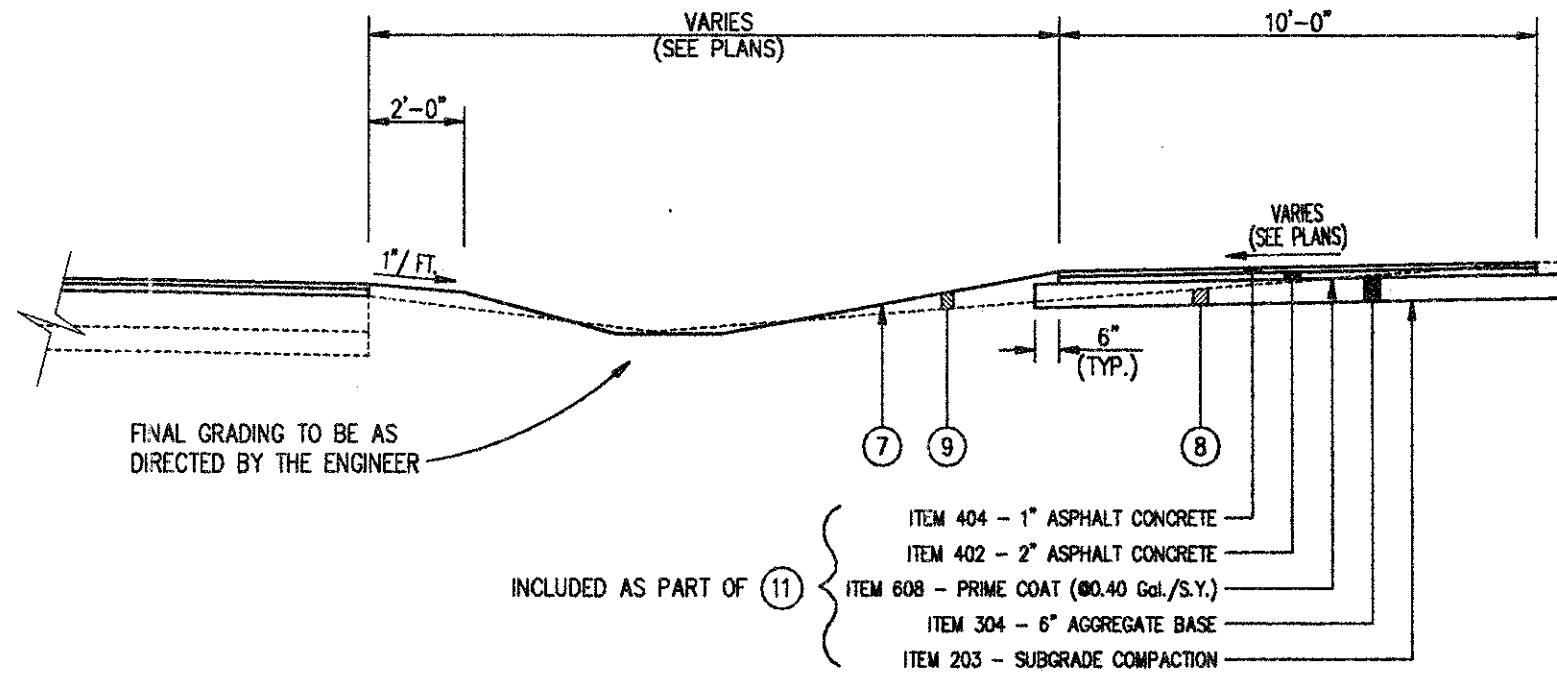
DETAIL "B"
NOTE: CONTRACTOR SHALL USE CARE TO AVOID DAMAGING EXISTING LOOP DETECTOR WIRE WHERE IT CROSSES THE CURB.



CENTER STREET TYPICAL SECTION
STA. 170+59.1 TO STA. 192+69.8± = 2210.7 L.F.



STA. 183+70± TO STA. 188+60±, LEFT



STA. 183+60± TO STA. 191+50±, RIGHT

COPYRIGHT - DATE: 05-14-99 13.03. CT CONSULTANTS INC. H:\989\88387\989\88387\989\88387.DWG PLOT1=48