

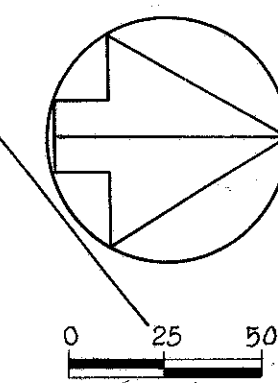
TOWNSHIP 10, RANGE 9
CONNECTICUT WESTERN RESERVE
CITY OF MENTOR

FED. RD. DIVISION	STATE	PROJECT
2	OHIO	US-1530(I)

171
181

LAKE COUNTY
LAK-615-3.26

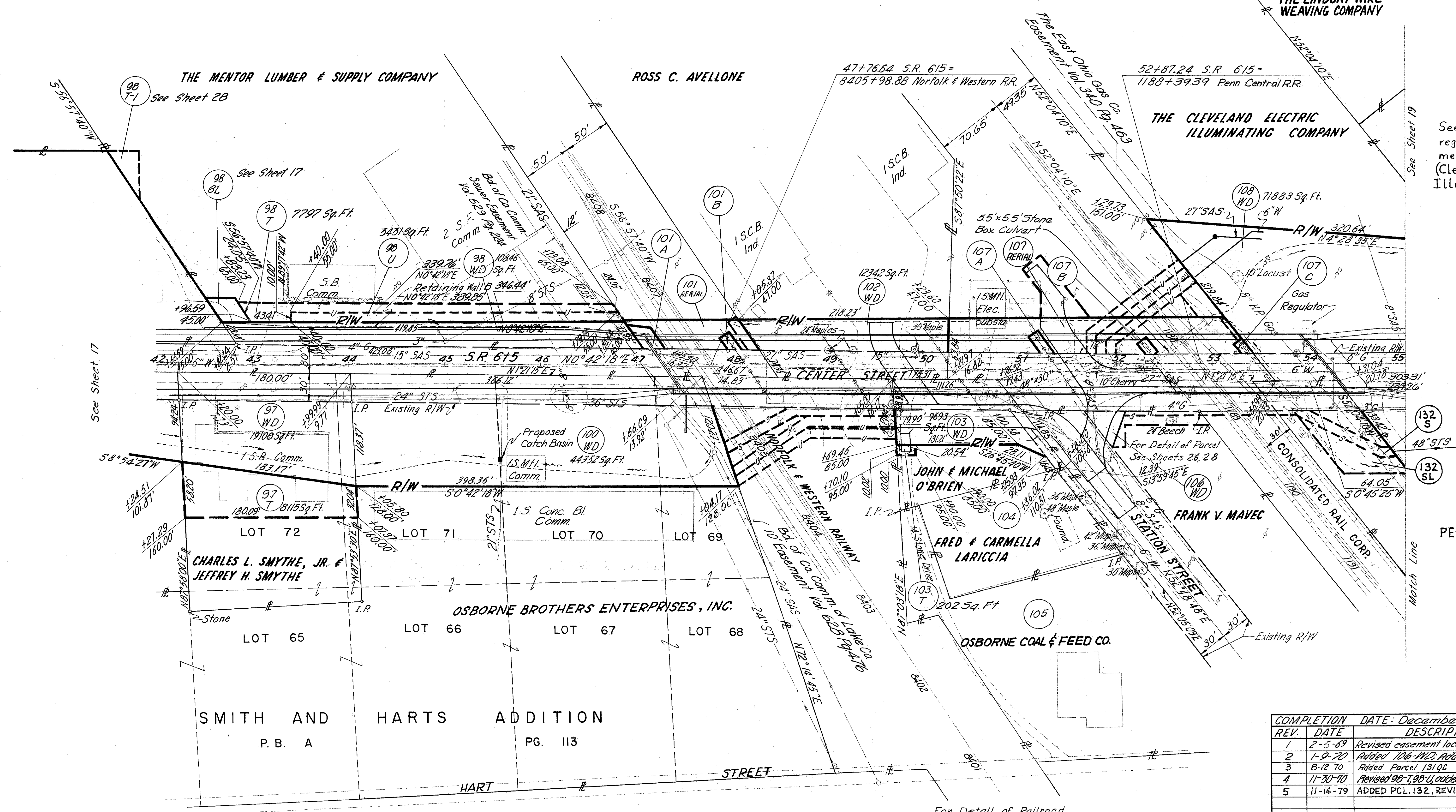
18
28



THE LINDSAY WIRE WEAVING COMPANY

THE CLEVELAND ELECTRIC ILLUMINATING COMPANY

See Note on sheet 19 regarding Access Easement for Parcel 108 (Cleveland Electric Illuminating Co.)



See Sheet 17

98 T-1 See Sheet 28

98 T See Sheet 17

98 U 7797 Sq. Ft.

97 WD 19100 Sq. Ft.

97 T 8115 Sq. Ft.

CHARLES L. SMYTHE, JR. & JEFFREY H. SMYTHE

SMITH AND HARTS ADDITION P.B. A

OSBORNE BROTHERS ENTERPRISES, INC.

PG. 113

ROSS C. AVELLONE

101 B 15 C.B. Ind.

101 A 15 C.B. Ind.

101 AERIAL

102 WD 12342 Sq. Ft.

JOHN & MICHAEL O'BRIEN

FRED & CARMELLA LARICCIA

OSBORNE COAL & FEED CO.

FRANK V. MAVEC

108 WD 71883 Sq. Ft.

107 A 15 M.H. Elec. Substa.

107 B 15 M.H. Elec. Substa.

107 C 10' Locust Gas Regulator

132 S

132 SL

132

PENN CENTRAL R.R.

See Sheet 19

Match Line

REV.	DATE	DESCRIPTION
1	2-5-69	Revised easement locations Parc. 106 & 107
2	1-9-70	Added 106-NLD, Added 107-T-2
3	8-12-70	Added Parcel 131 QC
4	11-30-70	Revised 98-T, 98-U, added 98-T-1, 98-BL
5	11-14-79	ADDED PCL. 132, REVISED OWNER PCL. 107

For Detail of Railroad Easements see Sheets 24, 25 & 26

RIGHT OF WAY STA. 42+00 TO 55+00