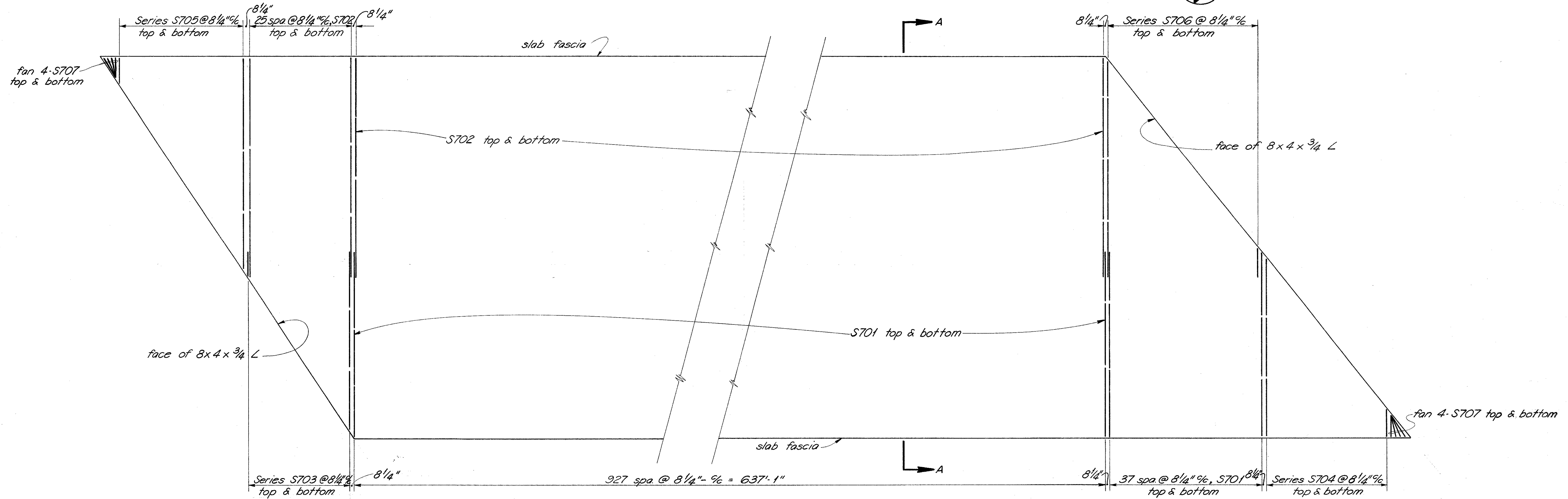
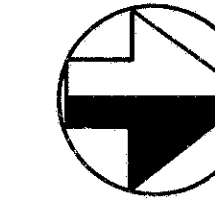


MICROFILMED
FEB 12 1985

FED. RD. DIVISION	STATE	PROJECT	
2	OHIO		

149
181

LAKE COUNTY
LAK-615-3.26



PLAN OF TRANSVERSE DECK REINFORCING

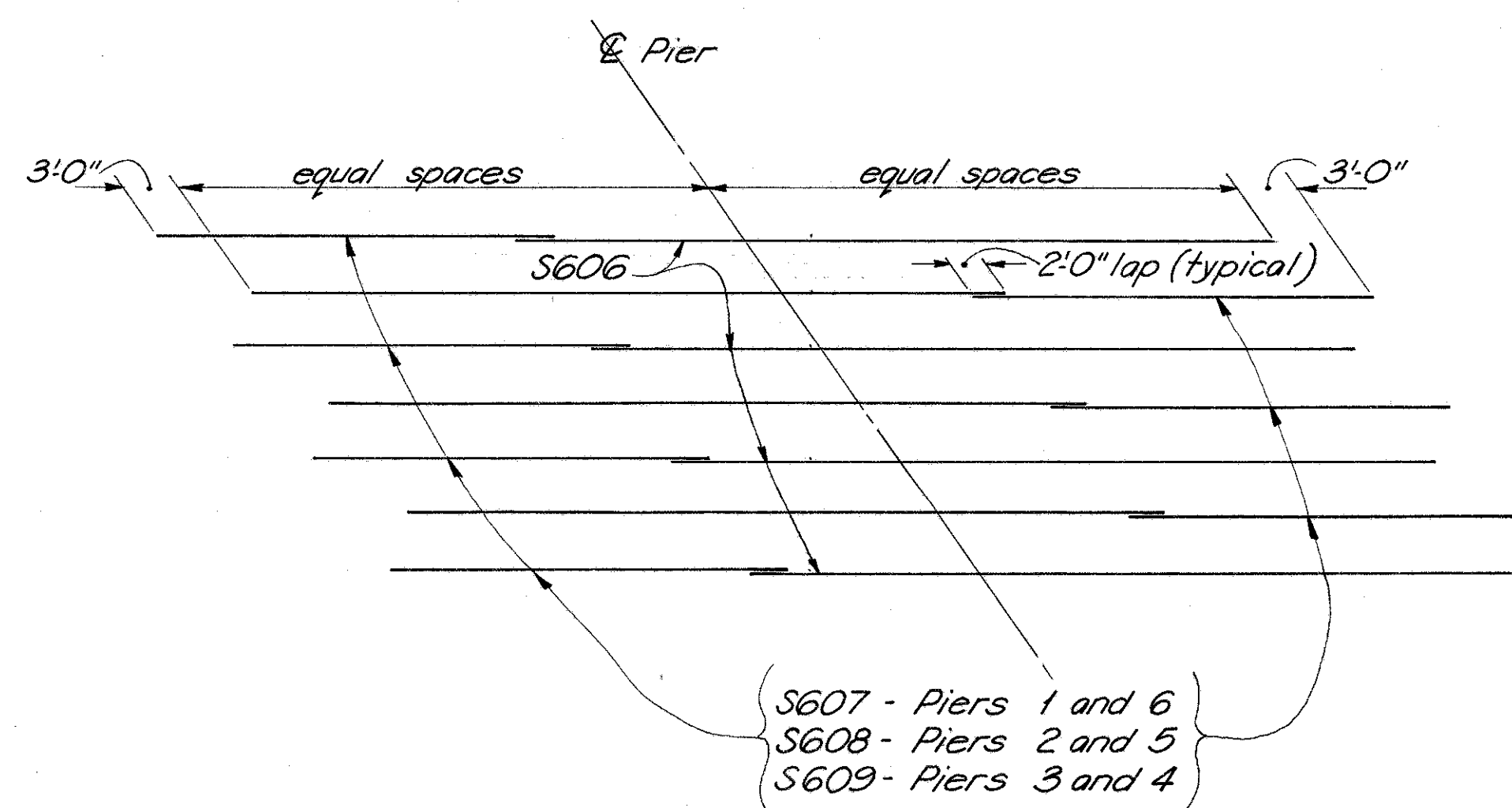
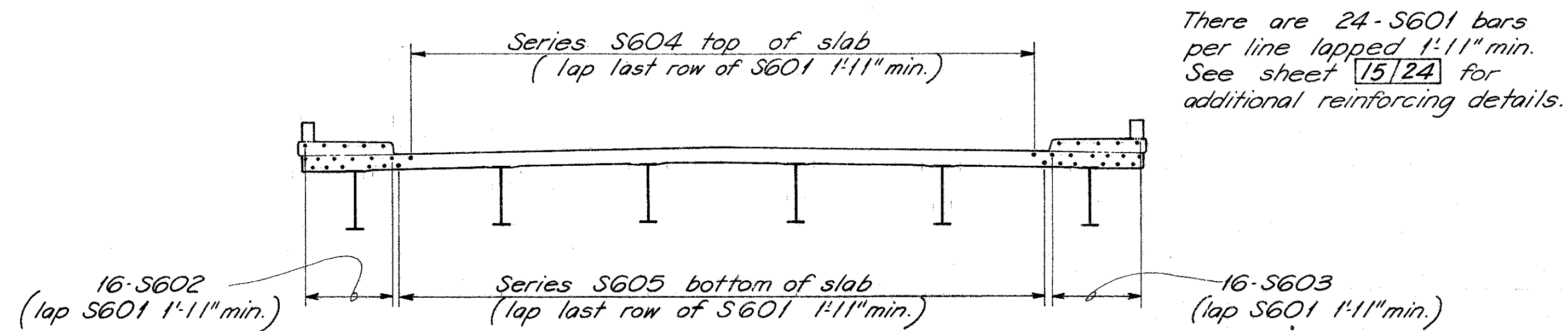


DIAGRAM SHOWING STAGGER OF "BARS OVER PIERS"



SECTION - A - LONGITUDINAL DECK REINFORCING

BURGESS & NIPLE LIMITED — CONSULTING ENGINEERS					
COLUMBUS, OHIO					20/24
SUPERSTRUCTURE DETAILS					
BRIDGE NO. LAK-615-0402					
OVER					
N&W RAILWAY & P-C RAILROAD					
LAKE COUNTY					
STA. 47+28.12					
54+16.22					
DESIGNED	DRAWN	TRACED	CHECKED	REVIEWED DATE	REVISION
WBR	ew		KED	WBR 4/14/69	