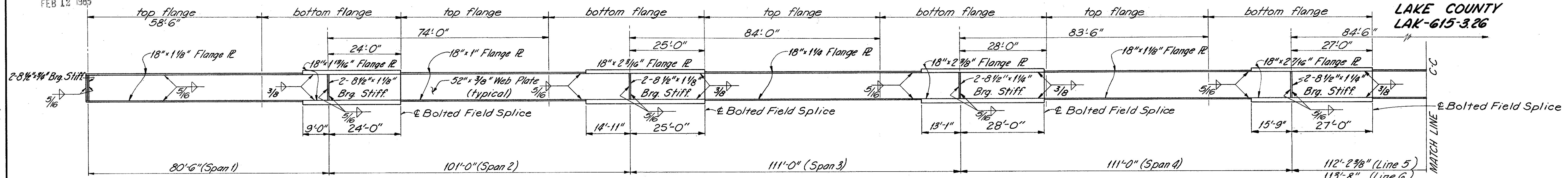
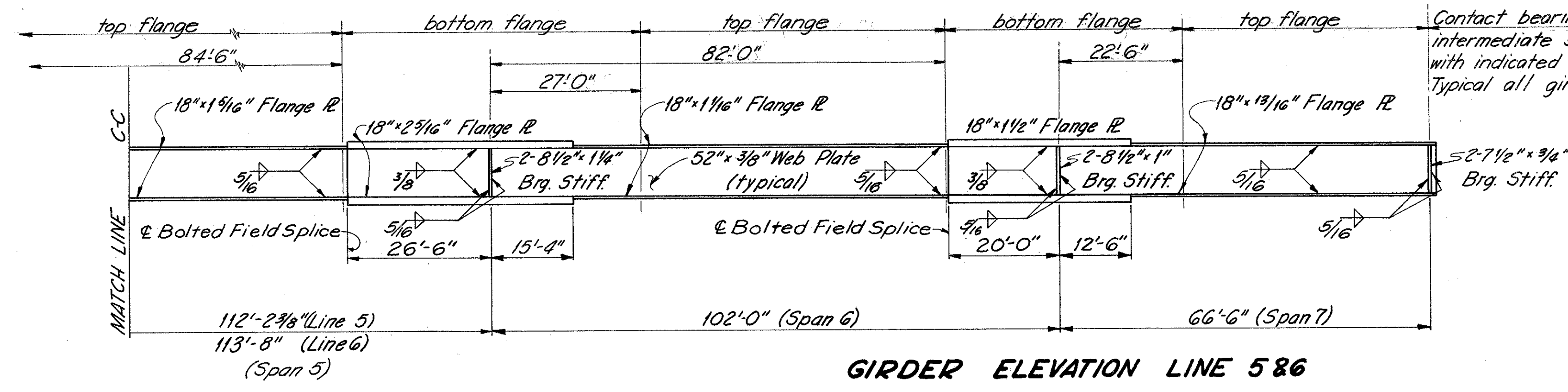


MICROFILMED
FEB 12 1985

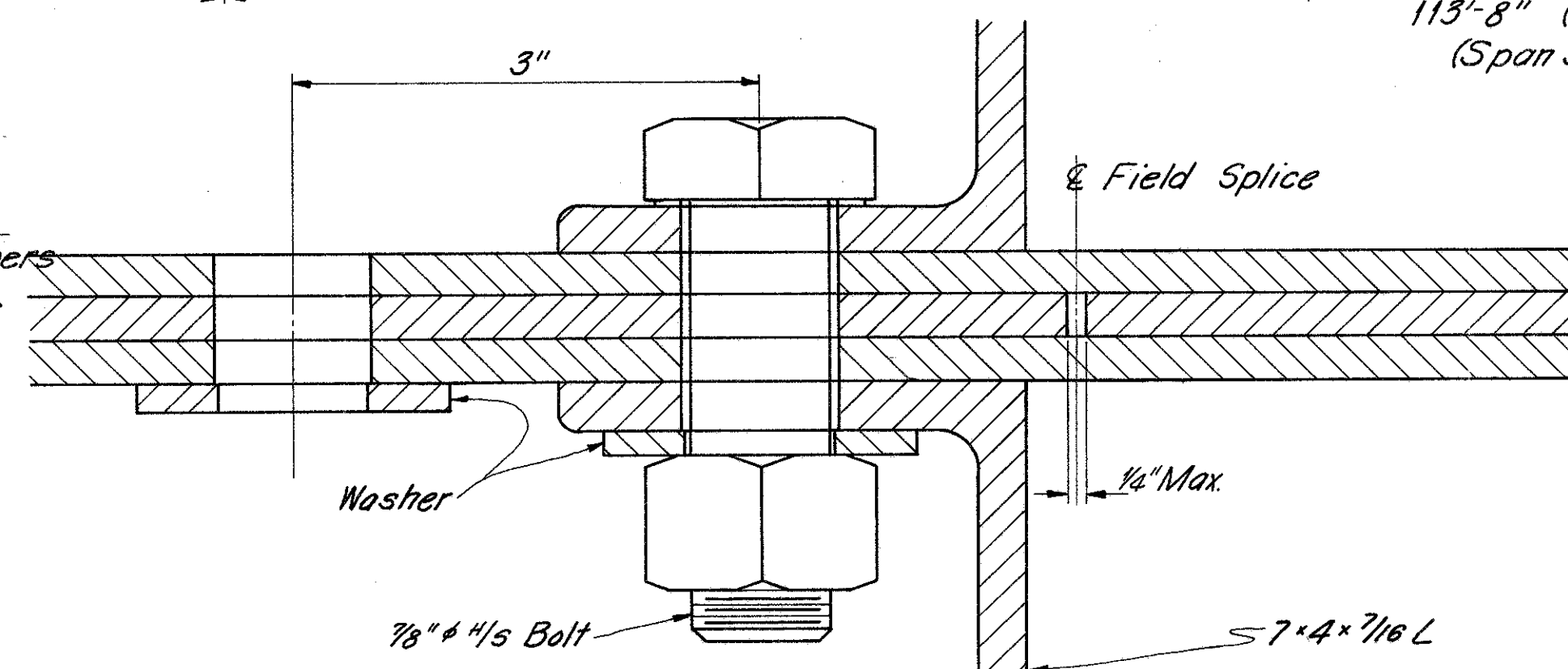
LAKE COUNTY
LAK-615-326



INTERMEDIATE STIFFENERS shall be spaced using approximately equal spaces between intermediate crossframes and bearing stiffeners as shown on the framing plan. All intermediate stiffeners shall be 7 x 1/2 x 4-3/8" R's, see Typical Half Section Sheet 15/24

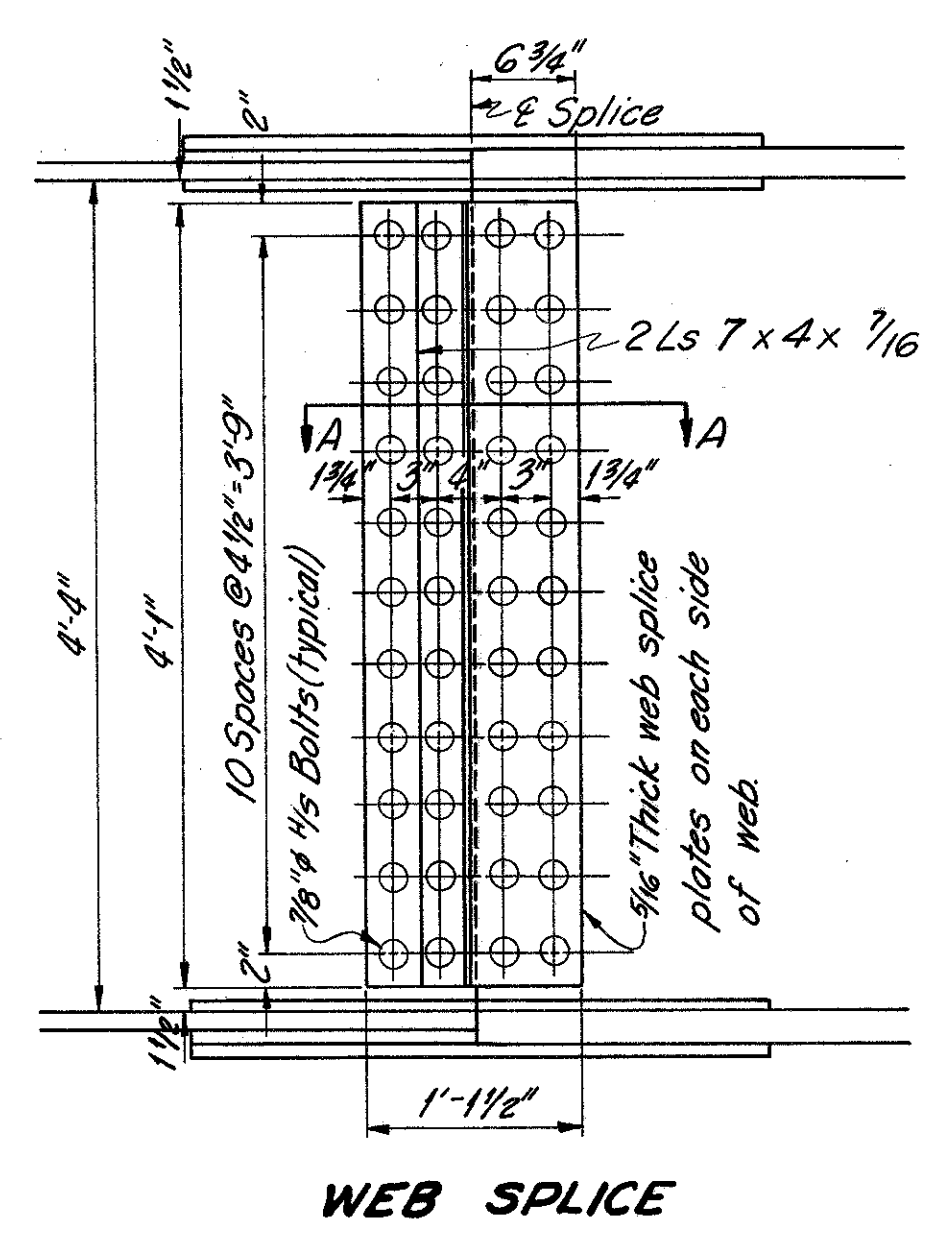


GIRDER ELEVATION LINE 5&86

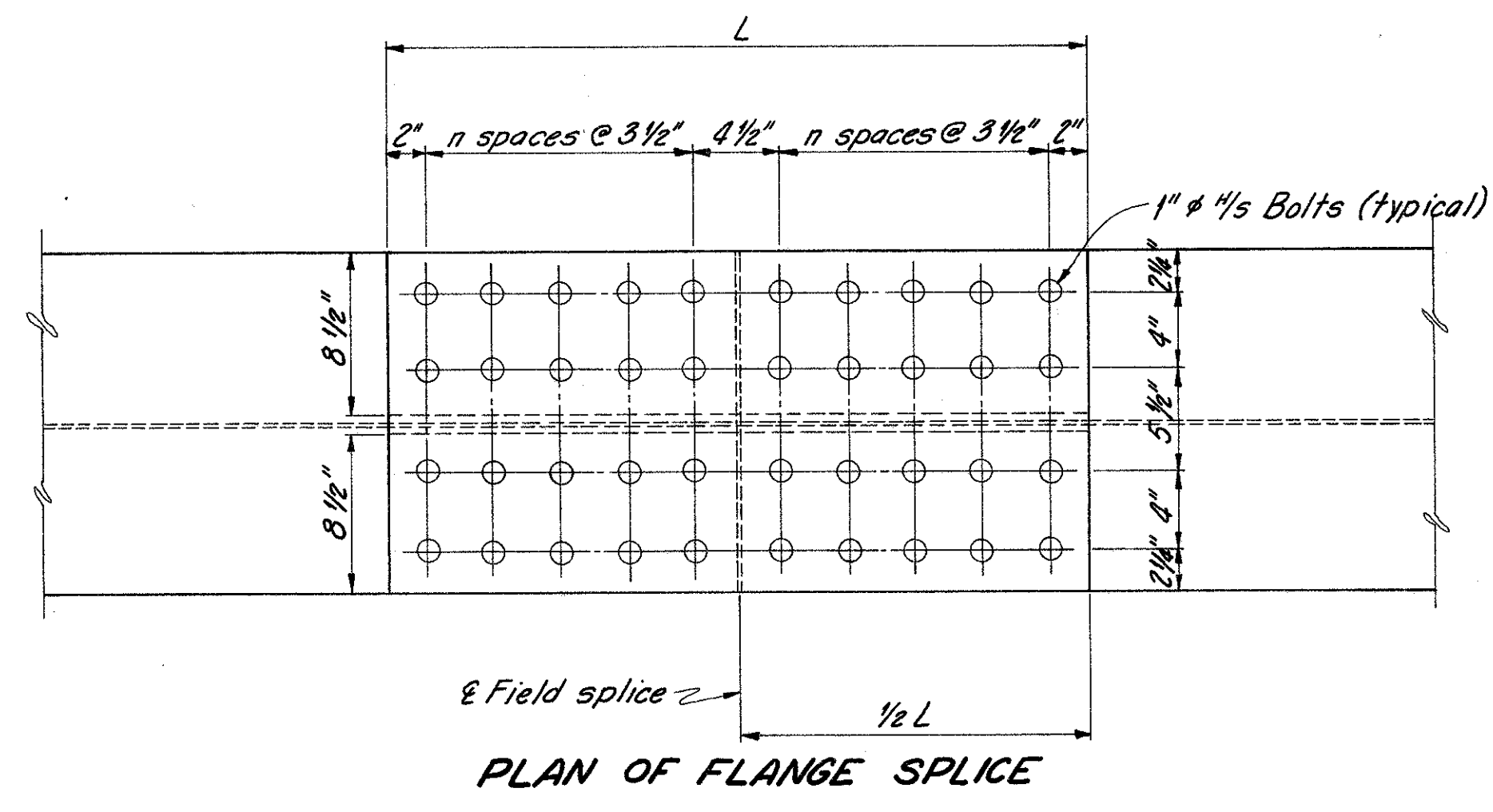


ANGLE STIFFENER AT FIELD SPLICE

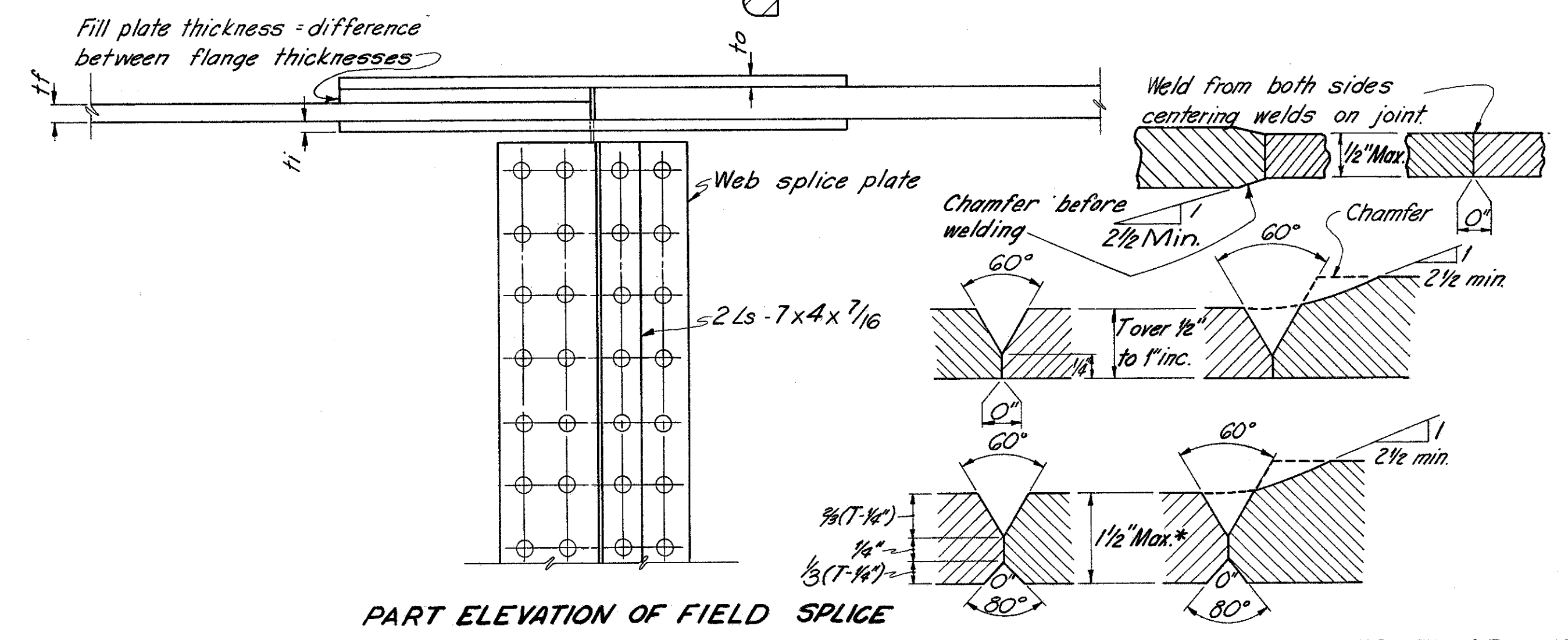
Shop splice locations, flanges and webs, shall be determined by available plate lengths and approved by the Director.



WEB SPLICE



PLAN OF FLANGE SPLICE



PART ELEVATION OF FIELD SPLICE

JOINT PREPARATION FOR SUBMERGED ARC WELDMENTS

All of the above full penetration welds shall be back-gauged and welded after welding far side.

Butt welds on girder flange plates shall be ground flush, the finish grinding being parallel to the direction of stress.

* For plate thickness over 1 1/2", use joint preparation conforming to B-U3a-S or B-U7-S, Fig. 216. AWS Specifications.

SMALLER GIRDER FLANGE PLATE	tf	to	ti	n	L	FLANGE BOLTS PER FIELD SPLICE
18"x1"	1"	1/2"	3/16"	3	2'-5 1/2"	64
18"x1 1/16"	1 1/16"	9/16"	5/8"	3	2'-5 1/2"	64
18"x1 1/8"	1 1/8"	9/16"	5/8"	3	2'-5 1/2"	64
18"x1 3/16"	1 3/16"	7/8"	1 1/16"	3	2'-5 1/2"	64
18"x1 1/4"	1 1/4"	5/8"	1 1/16"	3	2'-5 1/2"	64
18"x1 3/8"	1 3/8"	1 1/16"	3/4"	4	3'-0 1/2"	80

BURGESS & NIPLE LIMITED — CONSULTING ENGINEERS
COLUMBUS 12, OHIO 17/24

SUPERSTRUCTURE DETAILS
BRIDGE No LAK-615-0402
OVER
N&W RAILWAY & P-C RAILROAD
STA. 47+28.12
LAKE COUNTY 54+16.22

DESIGNED	DRAWN	TRACED	CHECKED	REVIEWED DATE	REVISED
WBR	J.S.F.		K.E.O.	WBR 4/14/69	