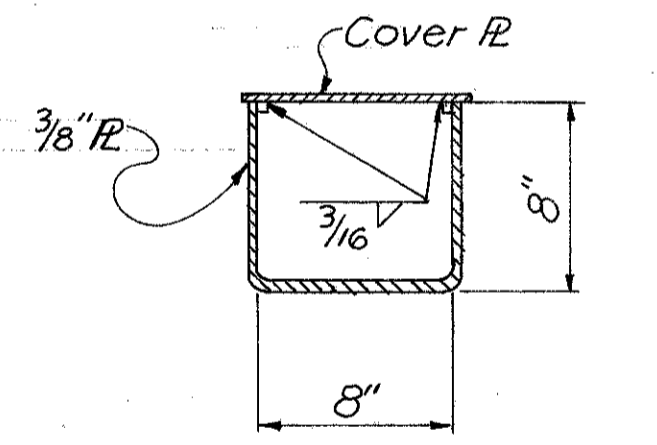
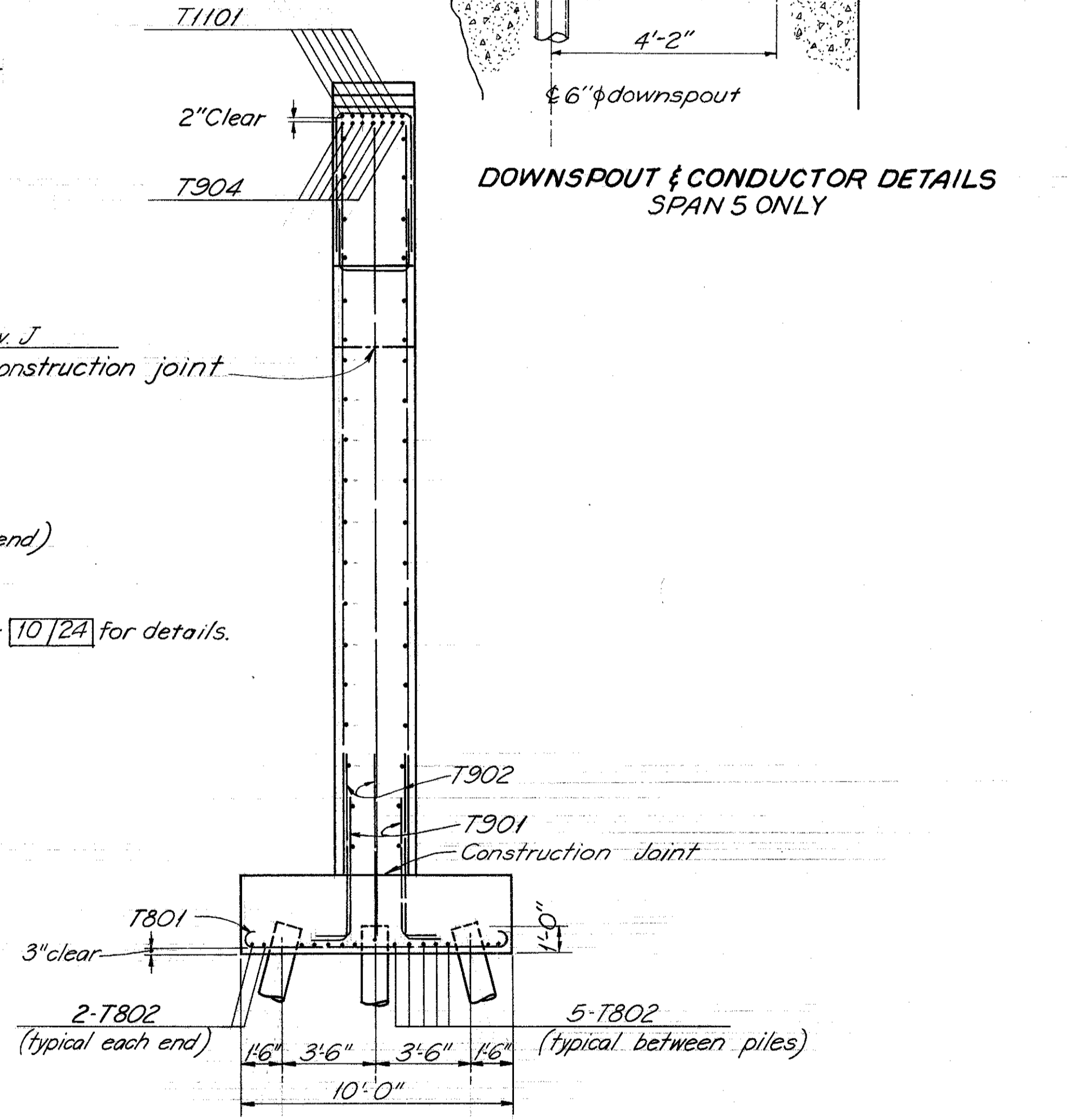
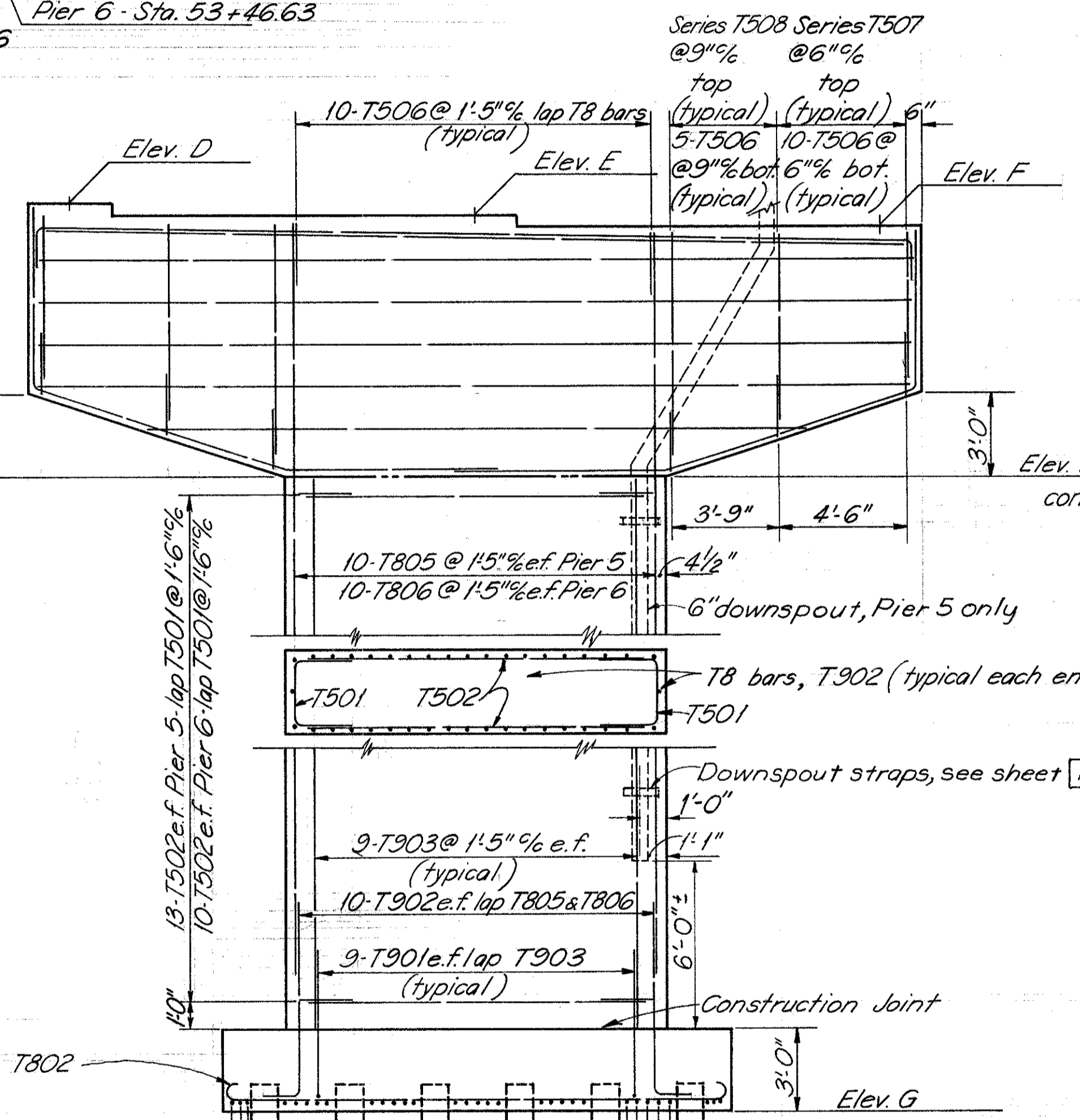
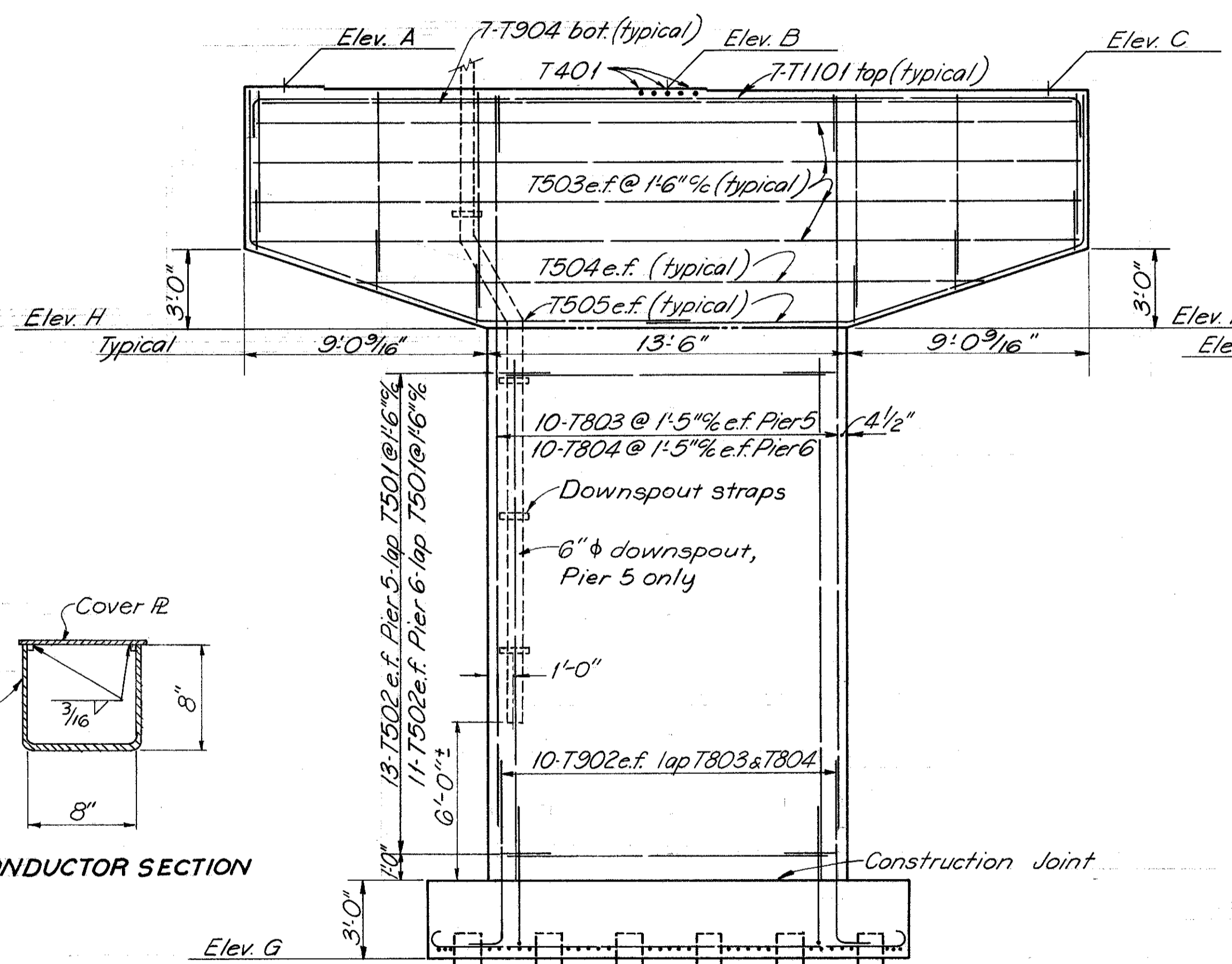
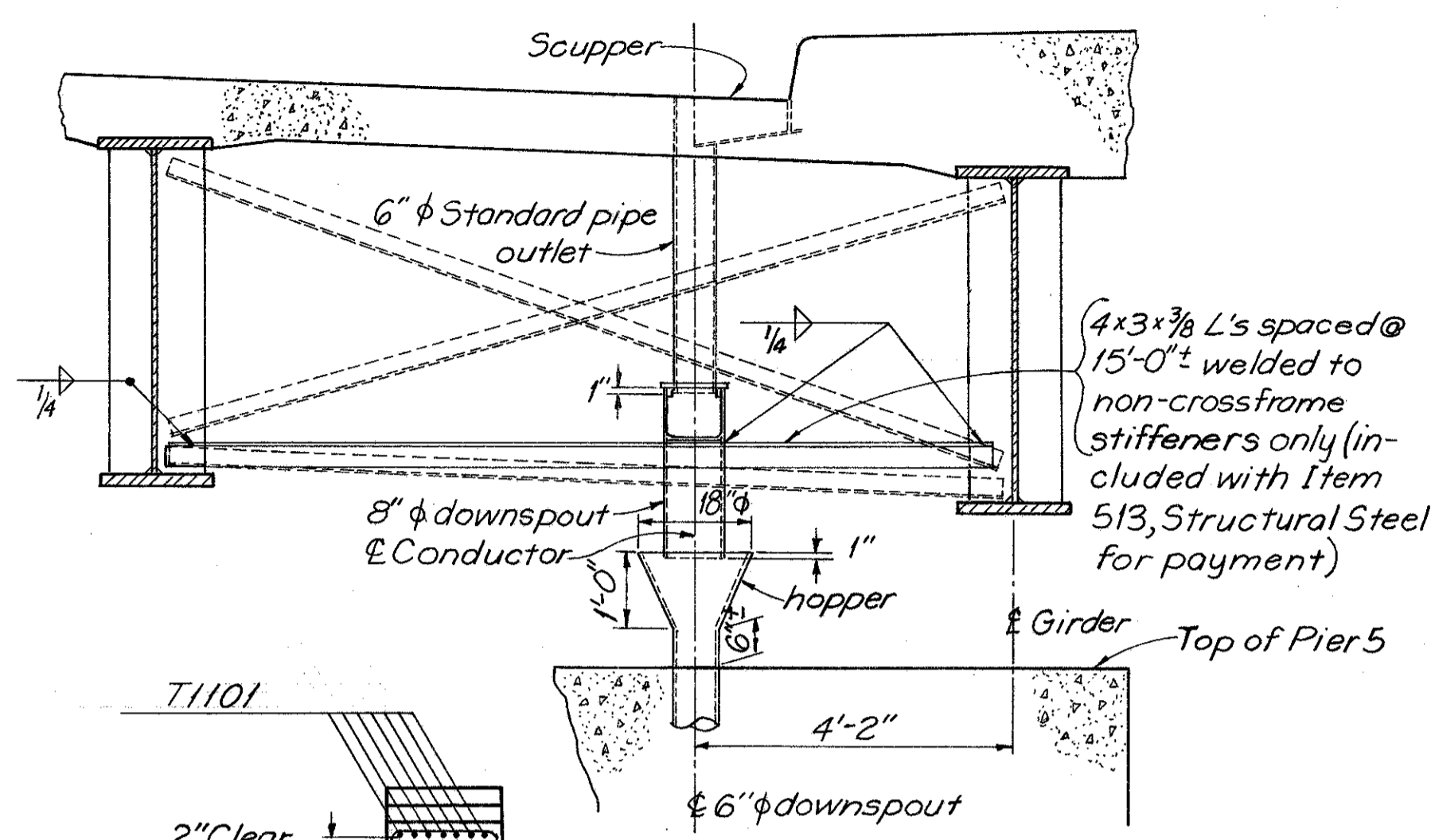
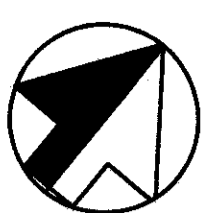
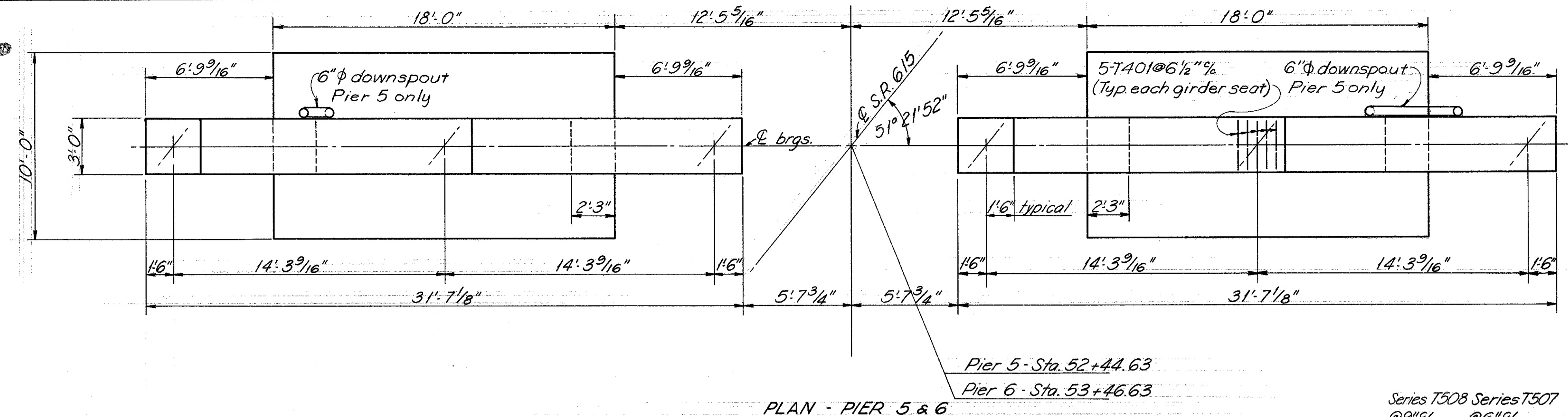


MICROFILMED
FEB 12 1985

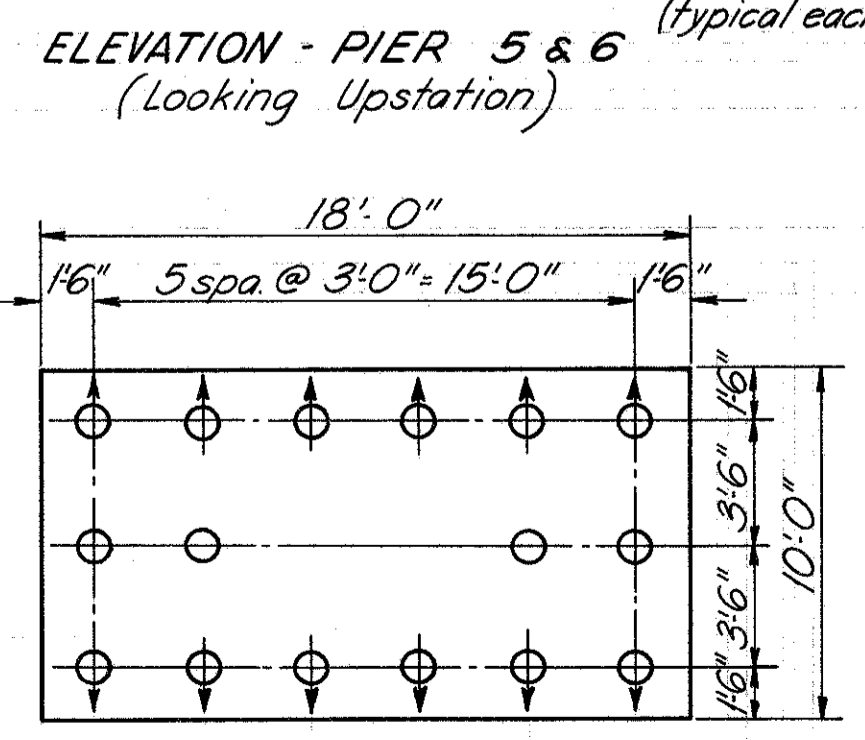
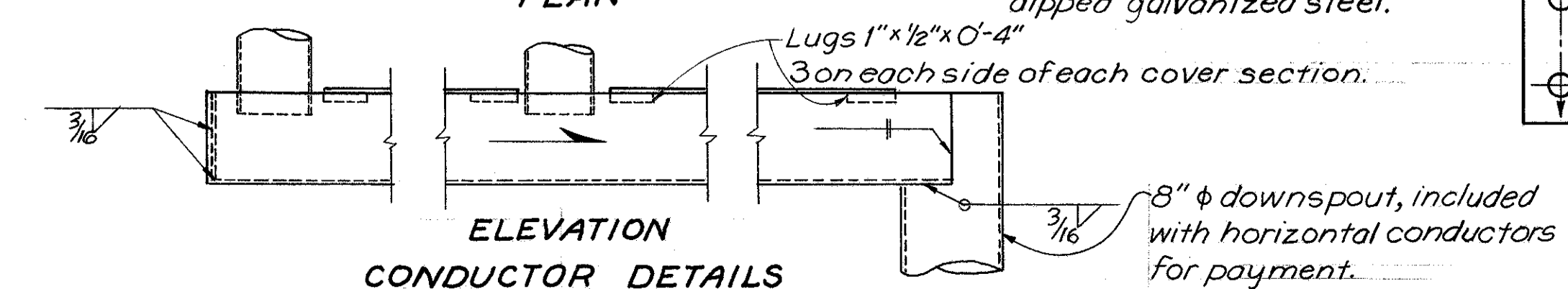
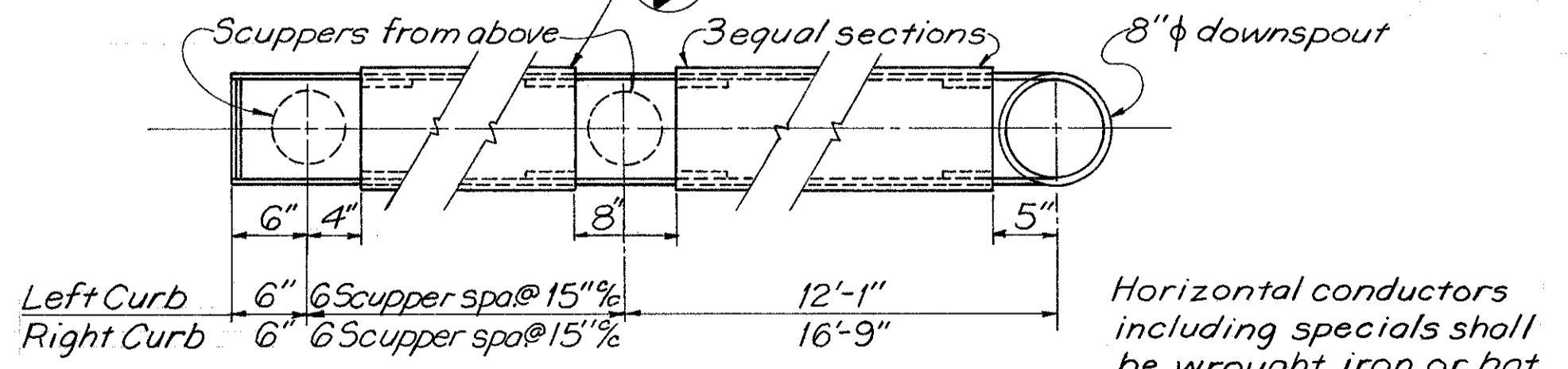
FED. ROAD DIV. NO.	STATE	FED. AID PROJ. NO.	TYPE FUNDS
2	OHIO		

143
181

LAKE COUNTY
LAK-615-326



Cover $\#$ 9 1/2" x 14" - 3 Sections of equal length between each pair of scuppers.



Batter piles shown with arrow 1:4 in direction of arrow.

Elev.	A	B	C	D	E	F	G	H	J
Pier 5	677.85	677.74	677.67	677.42	676.98	676.59	645.00	668.67	667.59
Pier 6	674.96	674.76	674.59	674.23	673.71	673.22	645.00	665.59	664.22

BURGESS & NIPLE LIMITED — CONSULTING ENGINEERS
COLUMBUS 12, OHIO 14/24

PIER 5 & 6 DETAILS
BRIDGE NO. LAK-615-0402
OVER
N&W RAILWAY & P-C RAILROAD

LAKE COUNTY STA. 47+28.12
54+16.22

DESIGNED	DRAWN	TRACED	CHECKED	REVIEWED DATE	REVISED
WBR	DW		KED	WBR 9/14/69	