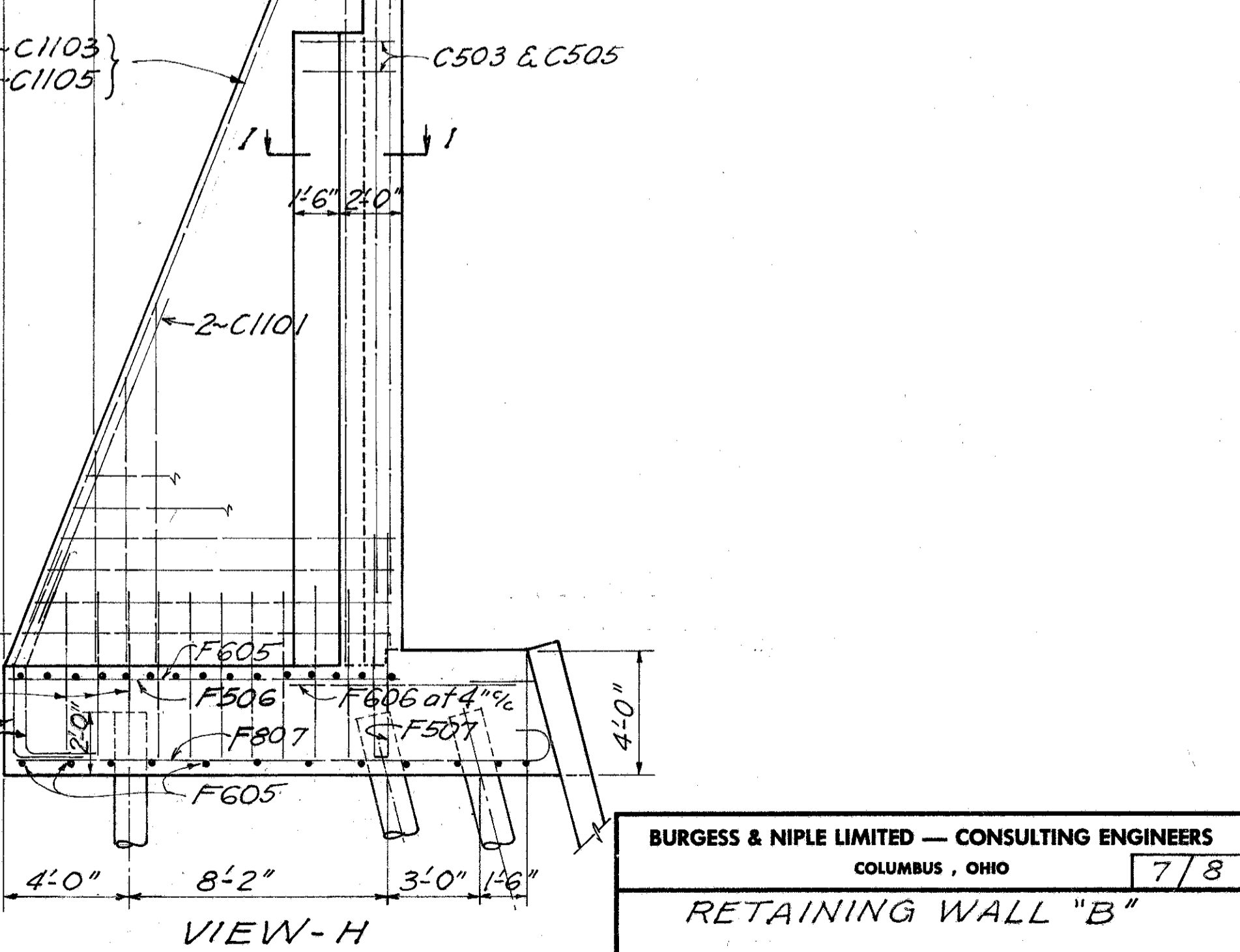
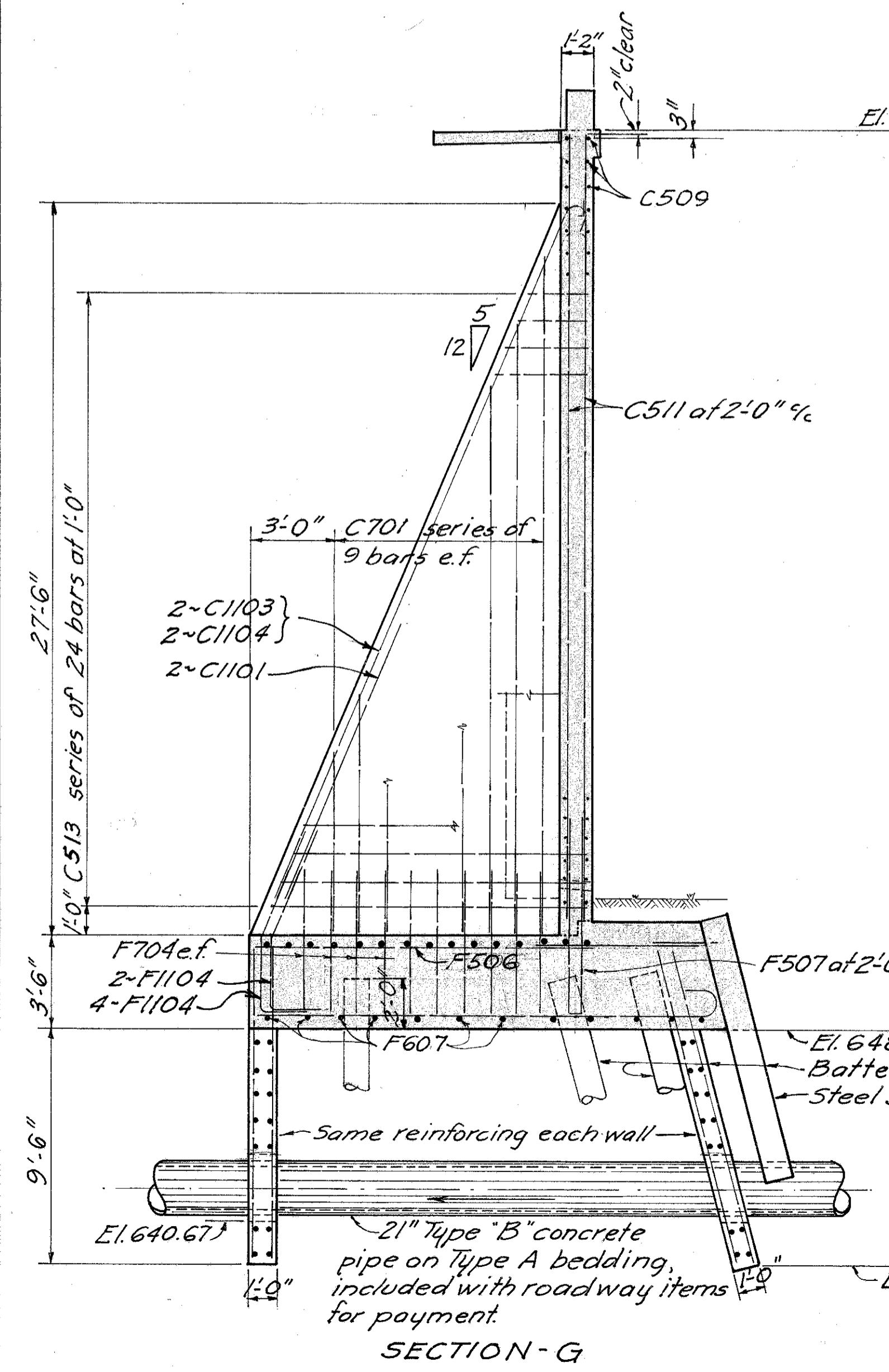
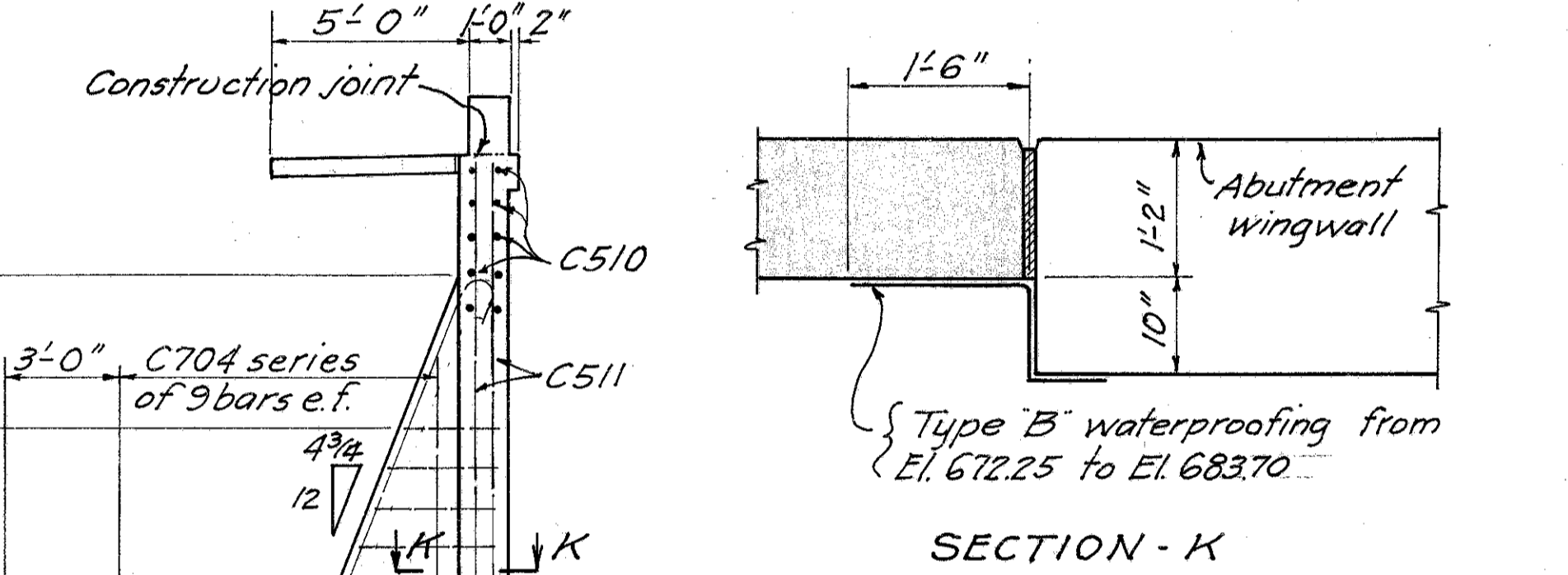
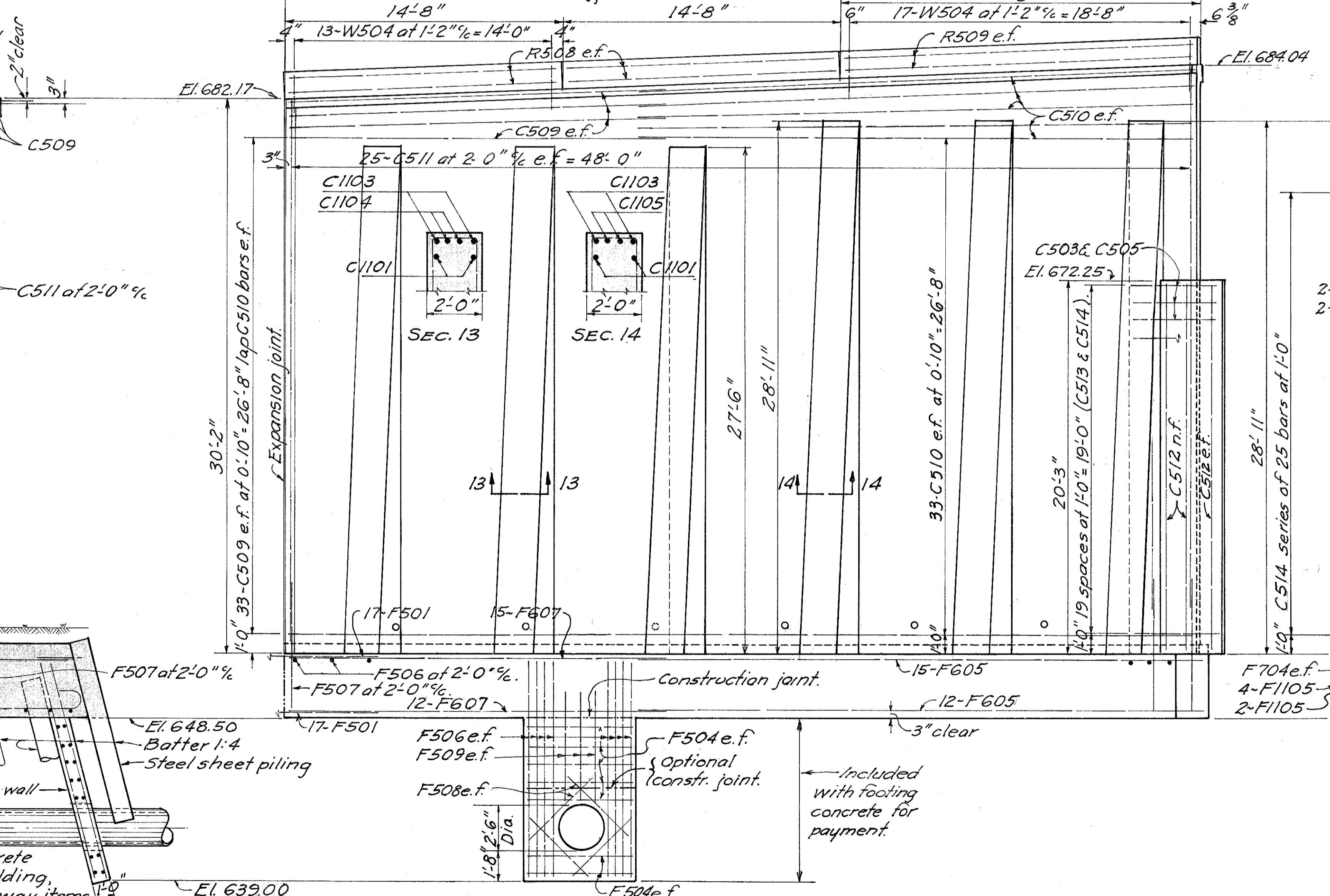
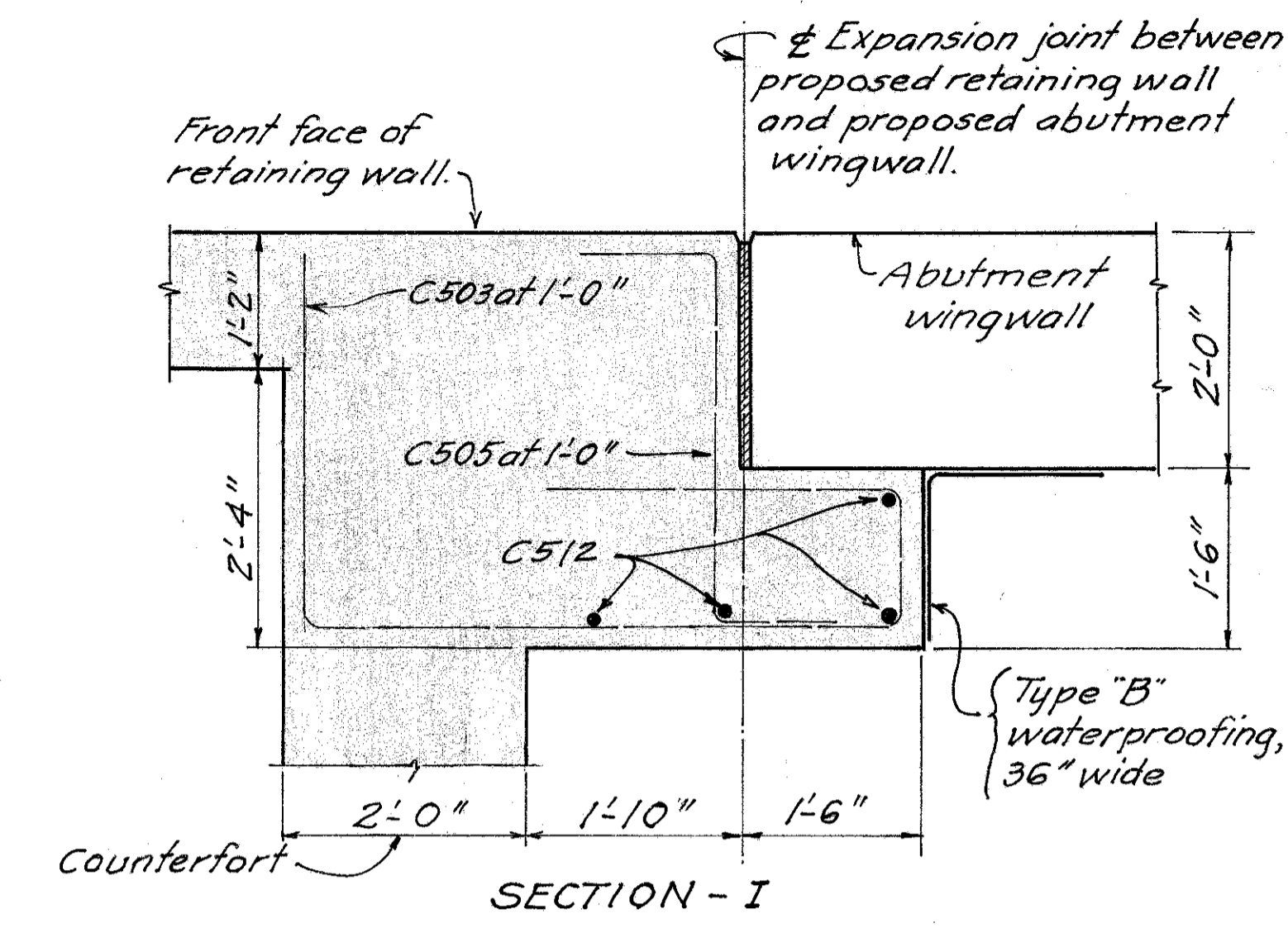
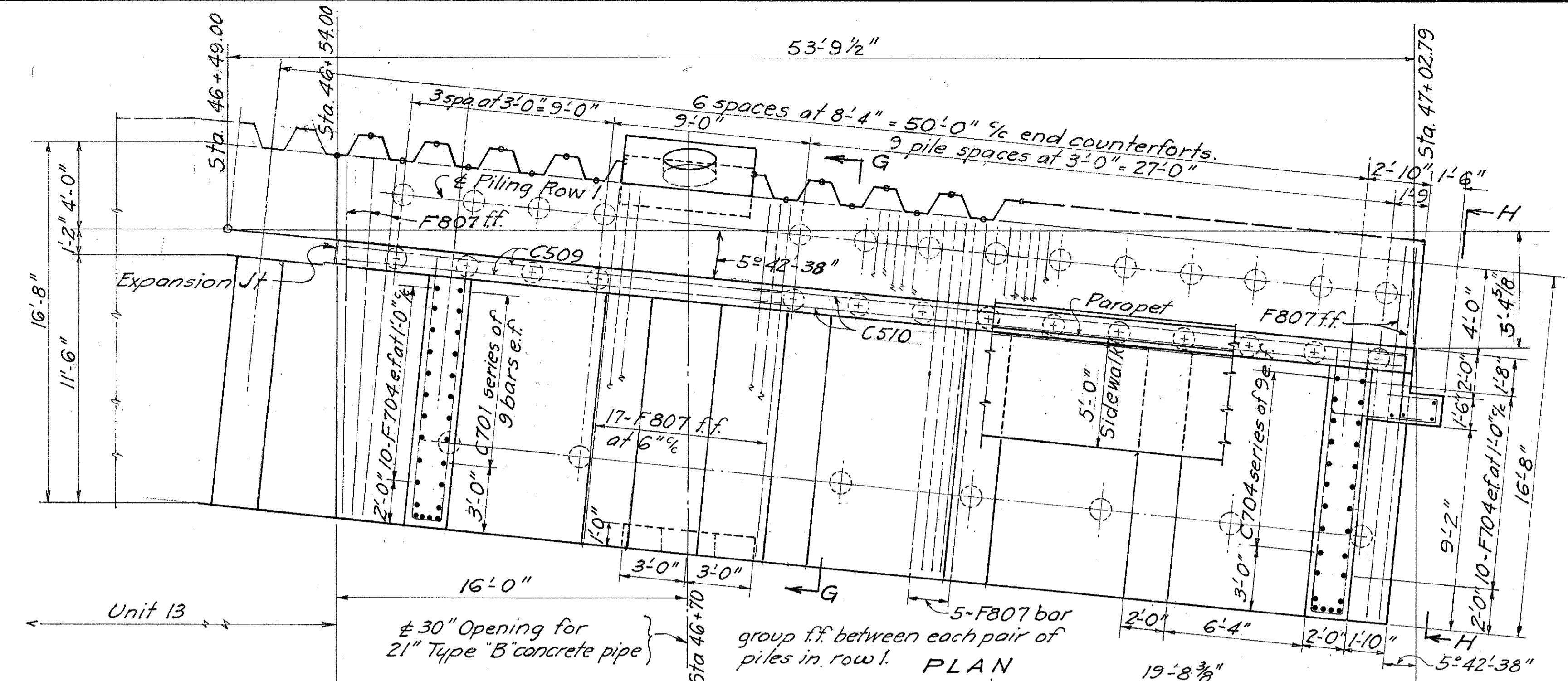
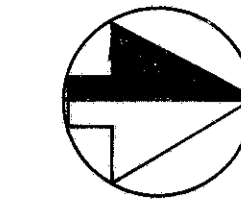


LAKE COUNTY
LAK-615-3.26



BURGESS & NIPLE LIMITED — CONSULTING ENGINEERS
COLUMBUS, OHIO

RETAINING WALL "B"
UNITS 14 AND 15

DESIGNED: [Signature] DRAWN: KED TRACED: KED CHECKED: JEC REVIEWED DATE: WBR 11-19-68

LAKE COUNTY STA. 42+60.00
STA. 47+02.79

LEGEND
e.f. = each face.
r.f. = rear face.
f.f. = far face.