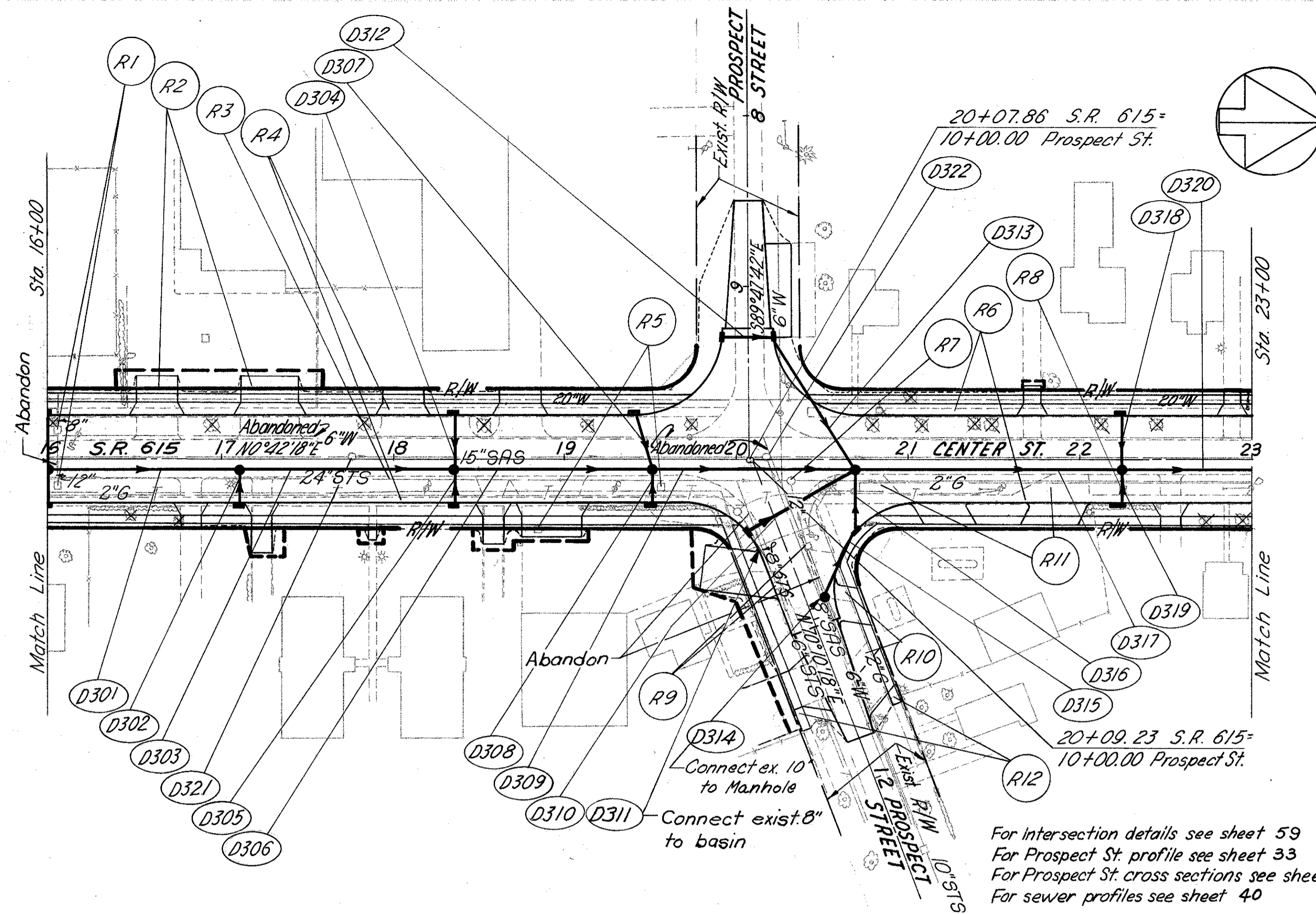
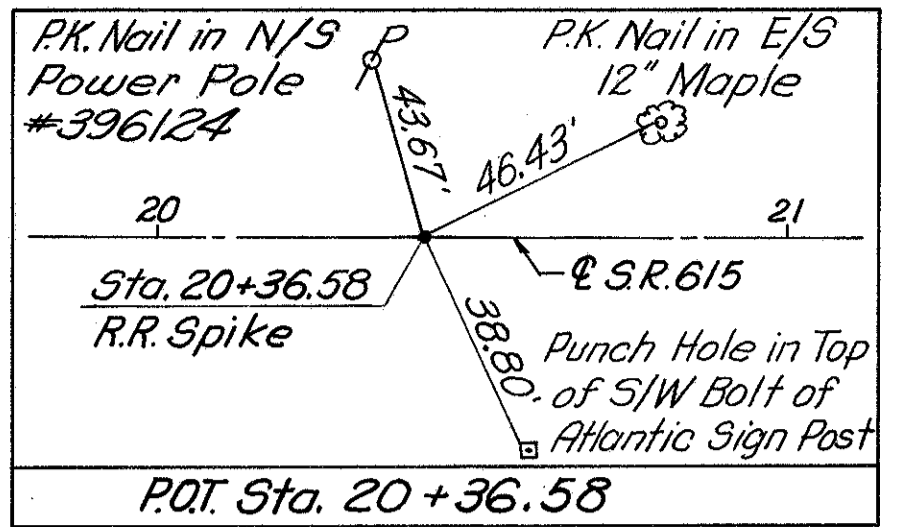


**BENCH MARK**  
 □ in N.E. Cor. of Conc. Slab at  
 entrance to Post Office Bldg.  
 17+35, 95' Lt. Elev. 690.20



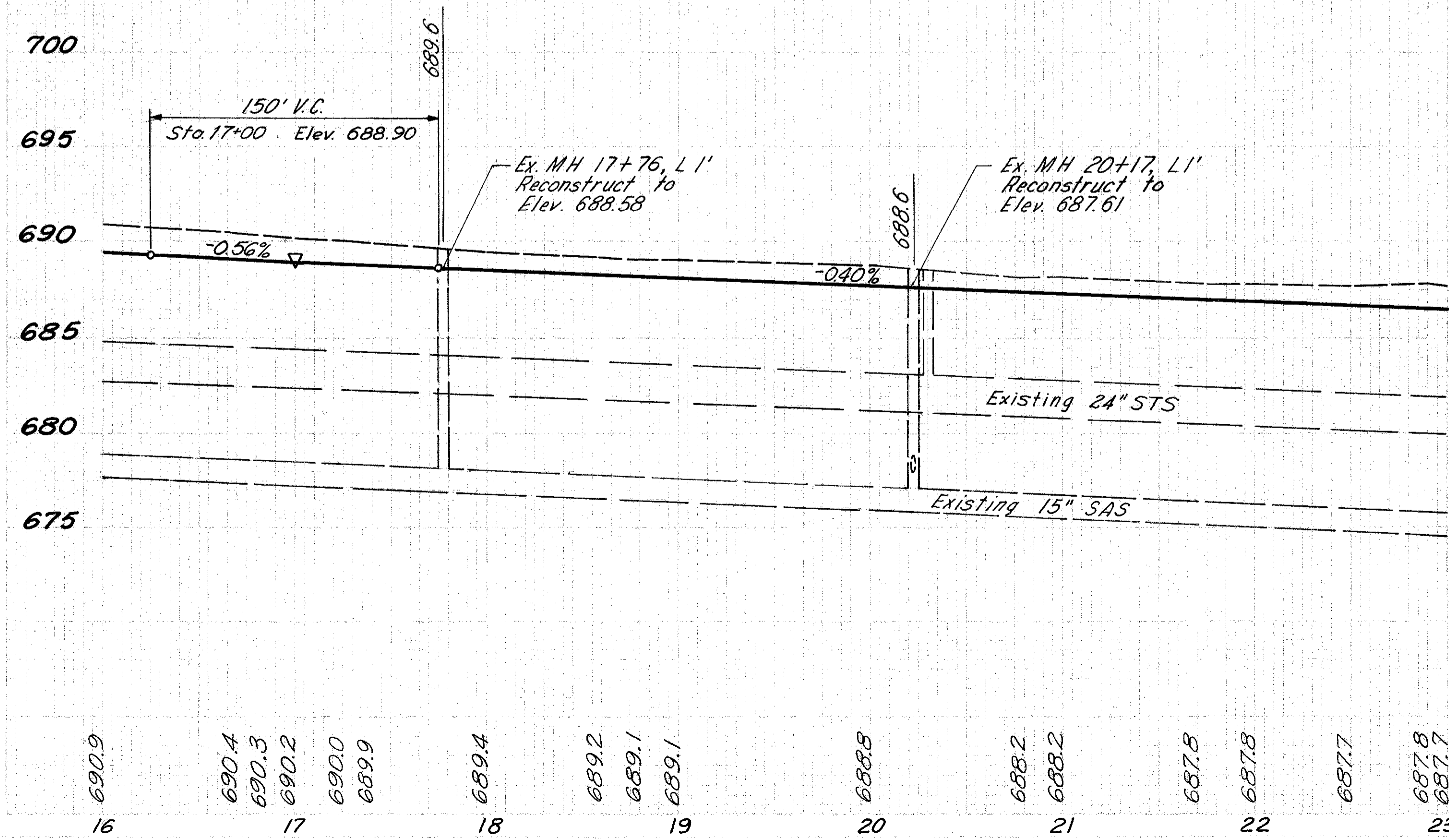
**DRAINAGE**

REF.	LOCATION	L.F.	L.F.	L.F.	L.F.	L.F.	EA.	EA.	EA.	EA.	EA.	EA.
D301	16+00 to 17+10, R6'			110								
D302	17+10, R25' to R6'	20										
D303	17+10 to 18+35, R6'			125								
D304	18+35, L25' to R6'	33										
D305	18+35, R25' to R6'	20										
D306	18+35 to 19+50, R6'			115								
D307	19+43.2, L25' to 19+50, R6'	34										
D308	19+50, R25' to R6'	20										
D309	19+50 to 20+09, R6'			119								
D310	20+07, R43' to 20+09, R10'	02										
D311	10+36(P) to 10+40(P), L27'	4										
D312	9+29(P), R14' to L14'(P)	29										
D313	9+29(P), L14' to 20+69, R6'	91										
D314	10+90(P) to 10+94(P), L12'	4										
D315	10+90(P), L12' to 20+69, R42'	42										
D316	20+69, R42' to R6'	36										
D317	20+69 to 22+25, R6'			156								
D318	22+25, L25' to R6'	33										
D319	22+25, R25' to R6'	20										
D320	22+25 to 23+00 R6'			75								
D321	17+77, L1'											1
D322	20+17, L1'											1
<b>TOTAL</b>		<b>370</b>	<b>78</b>	<b>110</b>	<b>359</b>	<b>231</b>	<b>2</b>	<b>6</b>	<b>1</b>	<b>7</b>	<b>2</b>	<b>2</b>

	603	7221	604	Y060
12" Type B				
15" Type B				
24" Type B				
27" Type B				
30" Type B				
No. 3 Catch Basin				
No. 2-A-6 Inlet				
No. 2-A-8 Inlet				
No. 1 Manhole				
No. 3-A Catch Basin				
Manhole Reconstructed				

For intersection details see sheet 59  
 For Prospect St profile see sheet 33  
 For Prospect St cross sections see sheet 109  
 For sewer profiles see sheet 40

For pavement elevations see Sheet 58



S.R. 615	
Excavation	3508 C.Y.
Embankment	0 C.Y.
Seeding & Mulching	1384 S.Y.
PROSPECT ST.	
Excavation	571 C.Y.
Embankment	0 C.Y.
Seeding & Mulching	523 S.Y.

REF.	LOCATION	202				
		EA.	EA.	S.Y.	L.F.	S.F.
R1	16+05, L&R	2				
R2	16+45 to 17+55, L			269		
R3	16+00 to 23+00, R12'				700	
R4	16+00 to 20+00, L&R					3980
R5	18+85, R & 19+55, R	2				2600
R6	20+40 to 23+00, L&R					
R7	23+30, R		1			
R8	22+26, R	1				
R9	10+53(P), L & 10+83(P), R	2				
R10	10+55(P) to 11+58(P), L			80		
R11	20+50 to 22+05, R			87		
R12	10+30(P) to 11+70(P), L&R				1400	
<b>TOTAL</b>		<b>7</b>	<b>1</b>	<b>436</b>	<b>700</b>	<b>7980</b>

QUANTITY CALCULATIONS  
 202  
 DEC 1 1970 JUN 26 1970  
 BURGESS & NIBLE, LIMITED