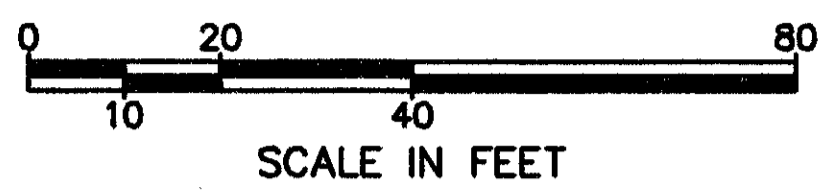
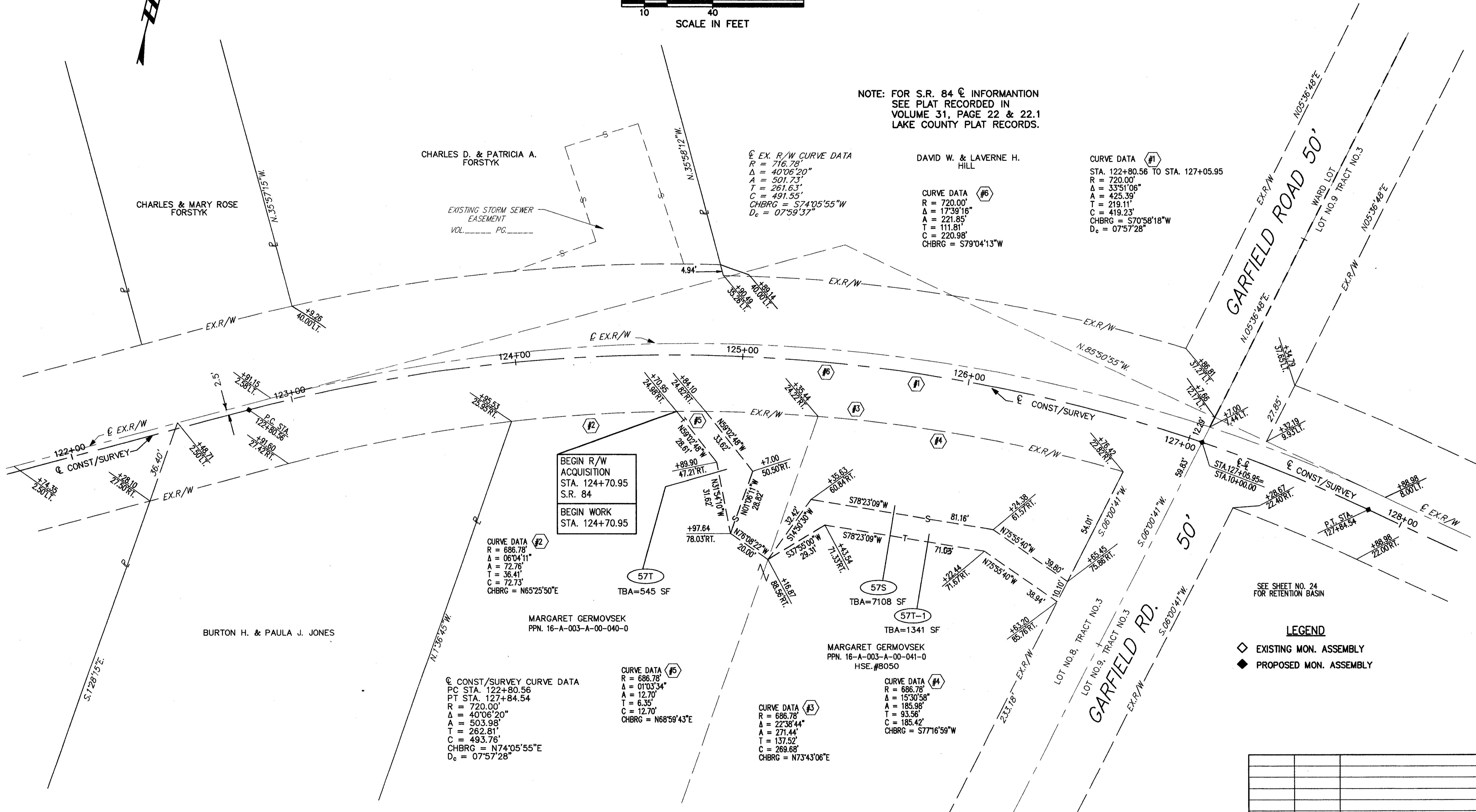


**LAKE COUNTY
CITY OF MENTOR**
PART OF LOT 8 & 9, TRACT 3, LOT 7 & 9, TRACT 2, BACON & CHURCH LOTS
T=10N, R=9W

CALC. BY _____	LAK - 615 - 2.82	OHIO	197D 199
CHKD. BY _____		FHWA	5
BY _____			
DATE _____			
PID NO.9332		PID NO.9332	
FED NO.STP-1A37()			



NOTE: FOR S.R. 84 $\text{\textcircled{C}}$ INFORMATION
SEE PLAT RECORDED IN
VOLUME 31, PAGE 22 & 22.1
LAKE COUNTY PLAT RECORDS.



CHARLES D. & PATRICIA A. FORSTYK

CHARLES & MARY ROSE FORSTYK

DAVID W. & LAVERNE H. HILL

BURTON H. & PAULA J. JONES

MARGARET GERMOVSEK
PPN. 16-A-003-A-00-040-0

MARGARET GERMOVSEK
PPN. 16-A-003-A-00-041-0
HSE.#8050

$\text{\textcircled{C}}$ CONST/SURVEY CURVE DATA
PC STA. 122+80.56
PT STA. 127+84.54
R = 720.00'
 Δ = 40°06'20"
A = 503.98'
T = 262.81'
C = 493.76'
CHBRG = N74°05'55"E
D_c = 07°57'28"

CURVE DATA #3
R = 686.78'
 Δ = 22°38'44"
A = 271.44'
T = 137.52'
C = 269.68'
CHBRG = N73°43'06"E

CURVE DATA #4
R = 686.78'
 Δ = 15°30'58"
A = 185.98'
T = 93.56'
C = 185.42'
CHBRG = S77°16'59"W

CURVE DATA #1
STA. 122+80.56 TO STA. 127+05.95
R = 720.00'
 Δ = 33°51'06"
A = 425.39'
T = 219.11'
C = 419.23'
CHBRG = S70°58'18"W
D_c = 07°57'28"

CURVE DATA #2
R = 686.78'
 Δ = 06°04'11"
A = 72.76'
T = 36.41'
C = 72.73'
CHBRG = N65°25'50"E

CURVE DATA #5
R = 686.78'
 Δ = 01°03'34"
A = 12.70'
T = 6.35'
C = 12.70'
CHBRG = N68°59'43"E

$\text{\textcircled{C}}$ EX. R/W CURVE DATA
R = 716.78'
 Δ = 40°06'20"
A = 501.73'
T = 261.63'
C = 491.55'
CHBRG = S74°05'55"W
D_c = 07°59'37"

CURVE DATA #6
R = 720.00'
 Δ = 17°39'18"
A = 221.85'
T = 111.81'
C = 220.98'
CHBRG = S79°04'13"W

SEE SHEET NO. 24
FOR RETENTION BASIN

LEGEND
 $\text{\textcircled{◇}}$ EXISTING MON. ASSEMBLY
 $\text{\textcircled{◆}}$ PROPOSED MON. ASSEMBLY

REV	DATE	DESCRIPTION

DATE COMPLETED: _____

S.R. 84 RIGHT OF WAY PLANS STA.123+09.51 TO STA. 127+05.95