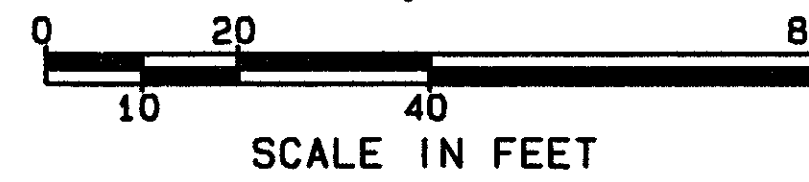
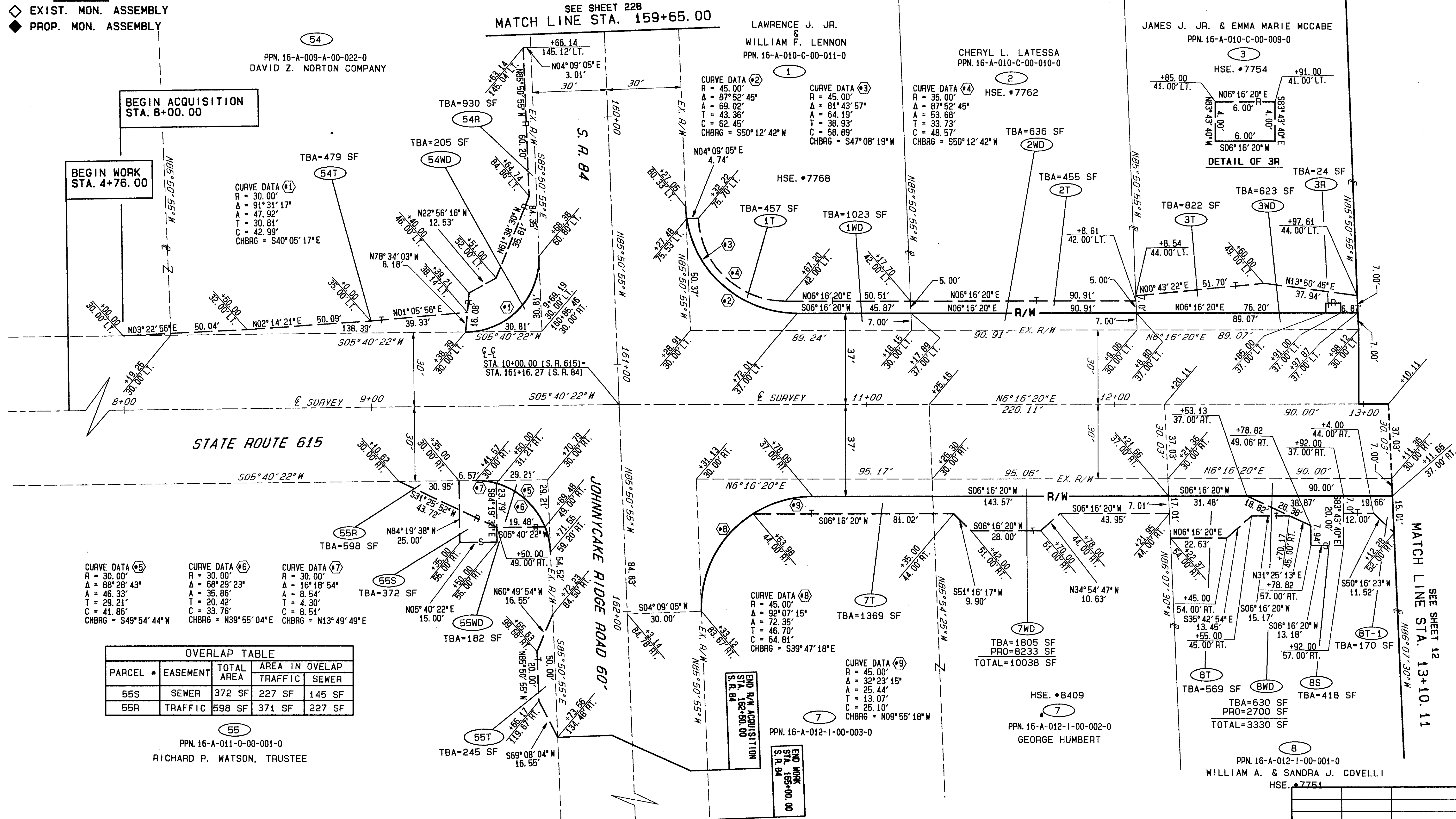


**LAKE COUNTY  
CITY OF MENTOR**  
PART OF LOT 8&9, TRACT 3, LOT 7&9, TRACT 2, BACON & CHURCH LOTS  
T=10N, R=9W



**LEGEND**  
 ◊ EXIST. MON. ASSEMBLY  
 ◆ PROP. MON. ASSEMBLY



BEGIN ACQUISITION  
STA. 8+00.00

BEGIN WORK  
STA. 4+76.00

CURVE DATA (5)  
R = 30.00'  
Δ = 88°28'43"  
A = 46.33'  
T = 29.21'  
C = 41.86'  
CHBRG = S49°54'44"W

CURVE DATA (6)  
R = 30.00'  
Δ = 68°29'23"  
A = 35.86'  
T = 20.42'  
C = 33.76'  
CHBRG = N39°55'04"E

CURVE DATA (7)  
R = 30.00'  
Δ = 16°18'54"  
A = 8.54'  
T = 4.30'  
C = 8.51'  
CHBRG = N13°49'49"E

OVERLAP TABLE				
PARCEL	EASEMENT	TOTAL AREA	AREA IN OVLAP	
			TRAFFIC	SEWER
55S	SEWER	372 SF	227 SF	145 SF
55R	TRAFFIC	598 SF	371 SF	227 SF

REV	DATE	DESCRIPTION

DATE COMPLETED:

RIGHT OF WAY PLANS STA. 8+00.00 TO STA. 13+10.11

90272 FRI 10/16/98 04:02 AM PAM FILES: RMB.PLT RW1.PLT