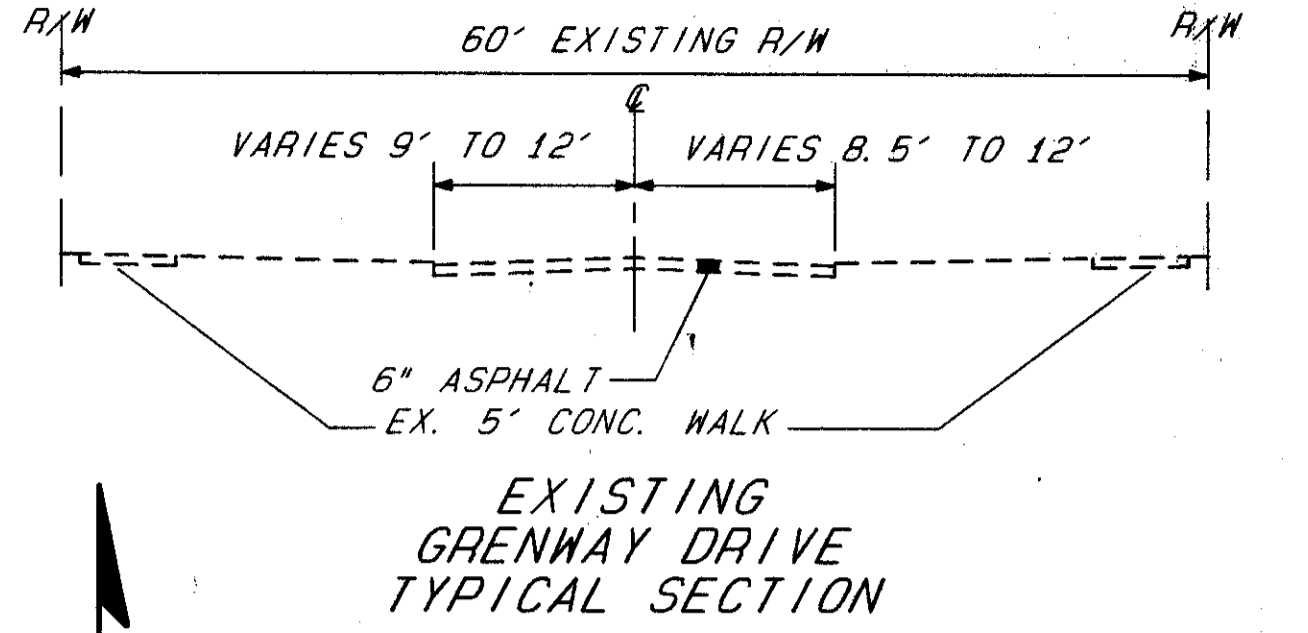
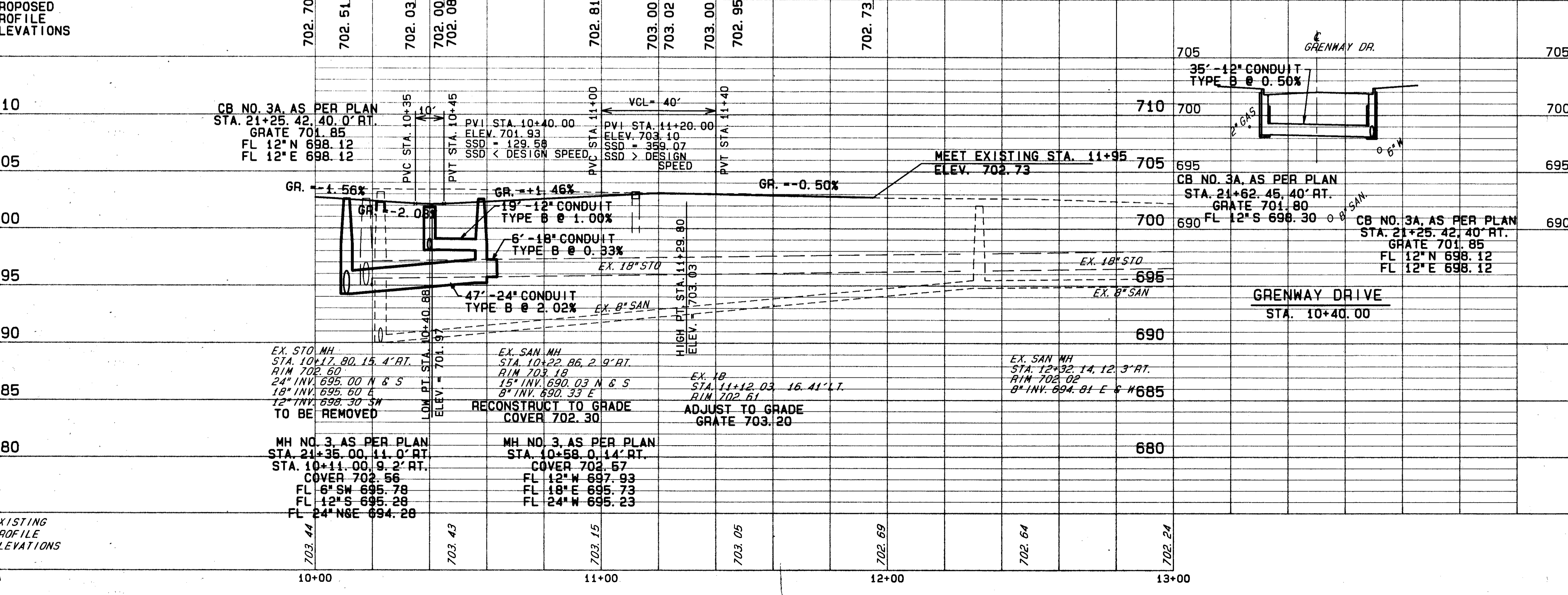


FOR TYPICAL SECTIONS SEE SHEETS 4-10  
 FOR S. R. 615 PLAN & PROFILE SEE SHEET 70  
 FOR S. R. 615 CROSS SECTIONS SEE SHEETS 112-113  
 FOR GRENNWAY DR. CROSS SECTIONS SEE SHEETS 124-125  
 FOR UNDERDRAIN QUANTITIES SEE SHEETS 40-41  
 FOR DRIVEWAY PROFILES SEE SHEET 140  
 FOR INTERSECTION DETAILS SEE SHEET 143  
 FOR CATCH BASIN DETAILS SEE SHEETS 145-146  
 FOR DRIVEWAY DETAILS SEE SHEETS 150-151  
 FOR PAVEMENT MARKING PLANS SEE SHEET 161  
 FOR SIGNING PLANS SEE SHEET 165



ROADWAY				
REF	LOCATION	S.F.	L.F.	
R-1	STA. 10+17.80 RT. TO STA. 10+58.00 RT.		40	
R-2	STA. 10+26.00 LT. TO STA. 11+50.00 LT.	620		
R-3	STA. 10+26.00 RT. TO STA. 11+50.00 RT.	620		
TOTALS		1240	40	



REF	LOCATION	EA	EA	EA	EA	EA	EA	EA	EA	EA	EA	EA	EA	EA	EA	EA	EA	EA	EA	
604	MANHOLE, NO. 3, AS PER PLAN																			
604	INLET ADJUSTED TO GRADE, AS PER PLAN																			
604	CATCH BASIN, NO. 3A, AS PER PLAN																			
603	24" CONDUIT, TYPE B AS PER PLAN, 706.02																			
603	18" CONDUIT, TYPE B AS PER PLAN, 706.02																			
603	12" CONDUIT, TYPE B AS PER PLAN, 706.02																			
TOTALS																				

QUANTITIES HAVE BEEN CARRIED TO SUB-SUMMARY SHEETS 42-45.

DRAINAGE & SANITARY	
REF	LOCATION
D-1	STA. 10+40.00 RT. TO STA. 10+57.00 RT.
D-2	STA. 21+25.42 (SR 615) RT. TO STA. 21+62.45 (SR 615) RT.
D-3	STA. 10+11.00 RT. TO STA. 10+58.00 RT.
D-4	STA. 10+58.00 RT. TO STA. 10+64.00 RT.
D-5	STA. 11+12.03 LT.
TOTALS	