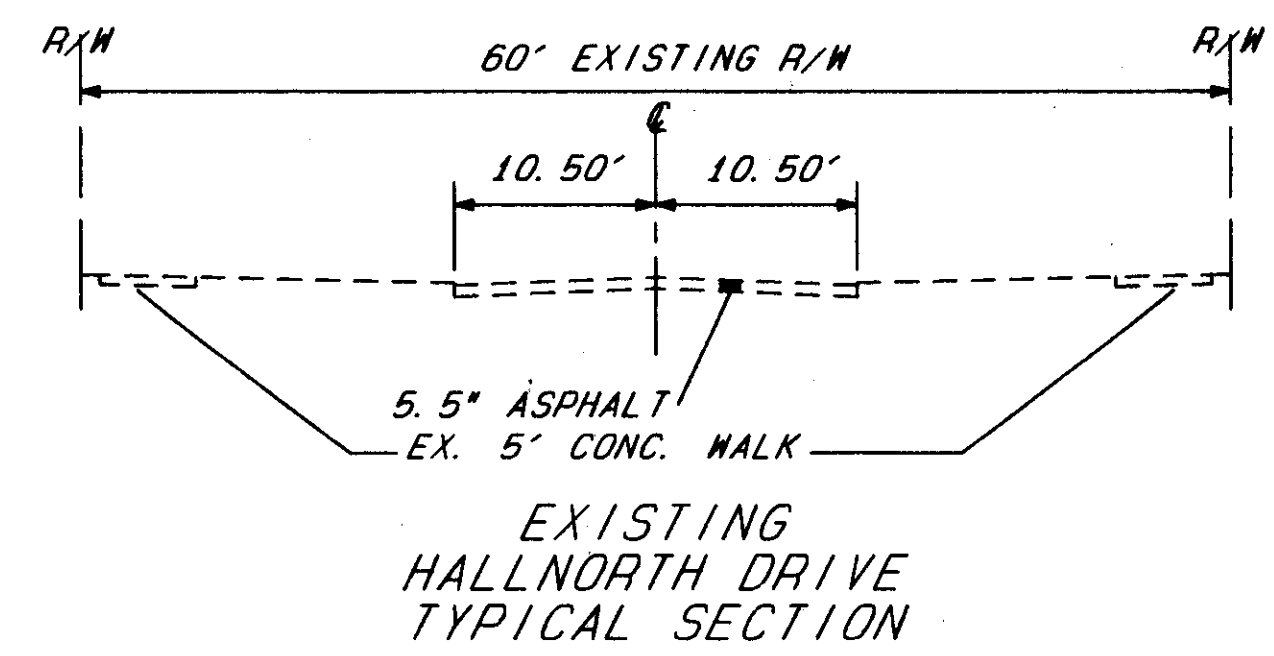
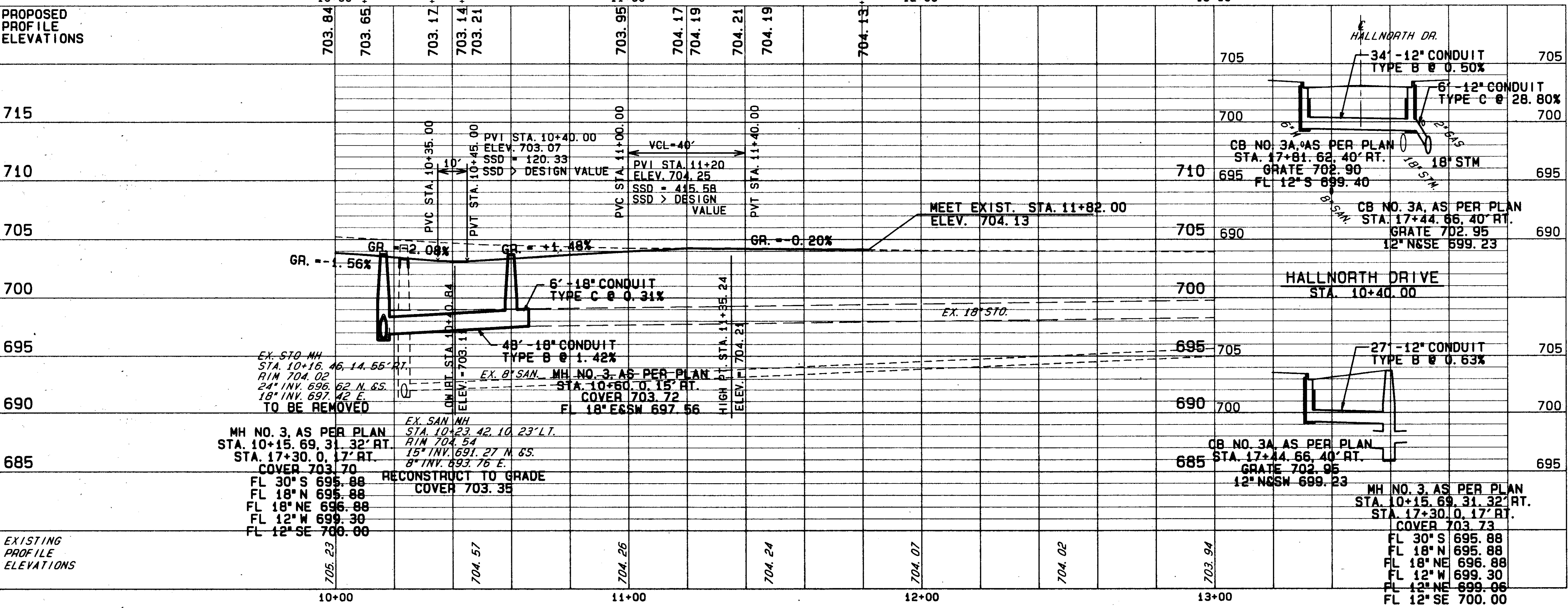


FOR SANITARY SEWER CONNECTION SCHEDULE SEE SHEET 47  
 FOR TYPICAL SECTIONS SEE SHEETS 4-10  
 FOR S.R. 615 PLAN & PROFILE SEE SHEET 69  
 FOR S.R. 615 CROSS SECTIONS SEE SHEETS 110-111  
 FOR HALLNORTH DRIVE CROSS SECTIONS SEE SHEETS 122-123  
 FOR UNDERDRAIN QUANTITIES SEE SHEETS 40-41  
 FOR DRIVEWAY PROFILES SEE SHEET 140  
 FOR INTERSECTION DETAIL SEE SHEET 143  
 FOR CATCH BASIN DETAILS SEE SHEETS 145-146  
 FOR DRIVEWAY DETAILS SEE SHEETS 150-151  
 FOR PAVEMENT MARKING PLANS SEE SHEETS 160-161  
 FOR SIGNING PLANS SEE SHEETS 164-165



ROADWAY		202	202
REF	LOCATION	S.F.	L.F.
R-1	STA. 10+16.46 RT. TO STA. 10+60.00 RT.	44	44
R-2	STA. 10+25.00 RT. TO STA. 11+20.00 RT.	475	
R-3	STA. 10+27.00 LT. TO STA. 11+20.00 LT.	465	
TOTALS		940	44



REF	LOCATION	S.F.	L.F.
604	18"x12"x18" TEE	EA.	1
604	MANHOLE, NO. 3, AS PER PLAN	EA.	1
604	CATCH BASIN, NO. 3A, AS PER PLAN	EA.	1
603	18" CONDUIT, TYPE C AS PER PLAN, 706.02	L.F.	6
603	18" CONDUIT, TYPE B AS PER PLAN, 706.02	L.F.	48
603	12" CONDUIT, TYPE C AS PER PLAN, 706.02	L.F.	6
603	12" CONDUIT, TYPE B AS PER PLAN, 706.02	L.F.	34
TOTALS			34

QUANTITIES HAVE BEEN CARRIED TO SUB-SUMMARY SHEETS 42-45

DRAINAGE & SANITARY	
REF	LOCATION
D-1	STA. 10+40.00 RT. TO STA. 10+42.00 RT.
D-2	STA. 10+15.69 RT. TO STA. 10+60.00 RT.
D-3	STA. 10+60.00 RT. TO STA. 10+66.00 RT.
D-4	STA. 17+81.62 (S.R. 615) RT. TO STA. 17+44.66 (S.R. 615) RT.
TOTALS	

HALLNORTH DRIVE PLAN & PROFILE STA. 10+00 TO STA. 11+82