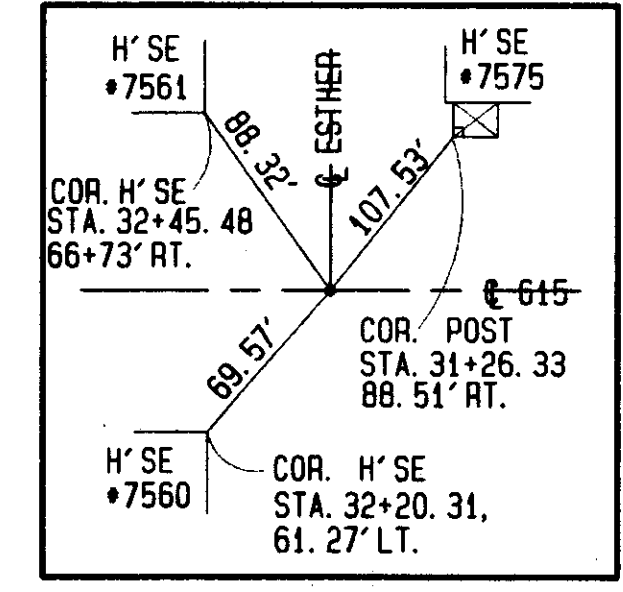
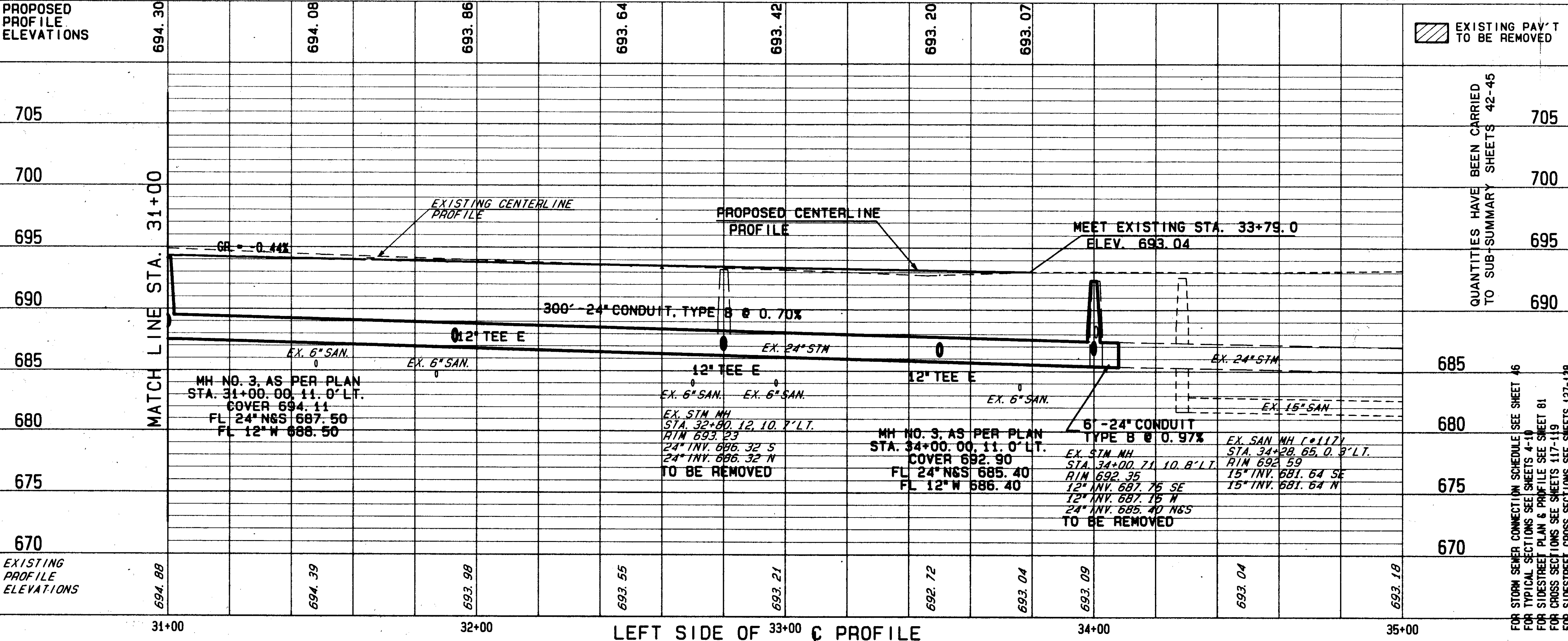


BENCH MARK #4  
 N. WESTERLY CORNER OF FRONT  
 WINDOW SILL @ RES. #7533  
 STA. 34+50+75 RT. \*  
 ELEV. 695.92



REF	LOCATION	QUANTITY	UNIT	TOTALS
R-1	STA. 31+00.00 LT. TO STA. 34+03.00 LT.		LUMP	
R-2	STA. 31+00.00 RT. TO STA. 31+71.41 RT.		LUMP	
R-3	STA. 31+00.00 RT. TO STA. 31+65.00 RT.		LUMP	
R-4	STA. 31+32.00 LT.		LUMP	
R-5	STA. 31+43.00 LT.		LUMP	
R-6	STA. 31+67.00 RT.		LUMP	
R-7	STA. 31+68.00 LT.		LUMP	
R-8	STA. 31+71.41 RT. TO STA. 34+4500 RT.		LUMP	
R-9	STA. 32+10.00 LT.		LUMP	
R-10	STA. 32+80.12 LT.		LUMP	
R-11	STA. 32+09.00 RT. TO STA. 34+00.00 RT.		LUMP	
R-12	STA. 33+63.00 RT.		LUMP	
R-13	STA. 33+92.00 RT.		LUMP	
R-14	STA. 33+87.15 RT. TO STA. 34+00.71 LT.		LUMP	
R-15	STA. 34+00.17 LT. TO STA. 33+97.49 RT.		LUMP	
R-16	STA. 33+97.49 LT. TO STA. 34+00.00 LT.		LUMP	
R-17	STA. 31+87.49		LUMP	
TOTALS				2795

REF	LOCATION	QUANTITY	UNIT	TOTALS
604	MANHOLE RECONSTRUCTED TO GRADE, AS PER PLAN TYPE 2		EA.	1
	15" BEND		EA.	2
	27" x 12" x 27" TEE		EA.	2
	24" x 12" x 24" TEE		EA.	1
604	MANHOLE NO. 3, AS PER PLAN		EA.	4
604	INLET NO. 1, AS PER PLAN		EA.	2
604	CATCH BASIN NO. 3A, AS PER PLAN		EA.	2
604	CATCH BASIN NO. 3, AS PER PLAN		EA.	3
603	27" CONDUIT, TYPE B AS PER PLAN, 706.02		L.F.	261
603	24" CONDUIT, TYPE B AS PER PLAN, 706.02		L.F.	386
603	12" CONDUIT, TYPE C AS PER PLAN, 706.02		L.F.	23
603	12" CONDUIT, TYPE B AS PER PLAN, 706.02		L.F.	107
TOTALS				1077



EXISTING PAV'T TO BE REMOVED

QUANTITIES HAVE BEEN CARRIED TO SUB-SUMMARY SHEETS 42-45

FOR STORM SEWER CONNECTION SCHEDULE SEE SHEET 46  
 FOR TYPICAL SECTIONS SEE SHEETS 4-10  
 FOR SIDEWALK PLAN & PROFILE SEE SHEET 81  
 FOR CROSS SECTIONS SEE SHEETS 117-119  
 FOR SIDEWALK CROSS SECTIONS SEE SHEETS 127-148  
 FOR UNDERDRAIN QUANTITIES SEE SHEETS 40-41  
 FOR DRIVEWAY PROFILES SEE SHEETS 138-139  
 FOR INTERSECTION DETAIL SEE SHEET 144  
 FOR CATCH BASIN DETAILS SEE SHEETS 145-146  
 FOR SANITARY SENDER DETAILS SEE SHEETS 147-148  
 FOR DRIVEWAY DETAILS SEE SHEET 149  
 FOR PAVEMENT MARKING PLANS SEE SHEET 162  
 FOR STAGING PLANS SEE SHEET 166

REF	LOCATION	QUANTITY	UNIT	TOTALS
D-1	STA. 31+00.00 RT. TO STA. 31+80.00 RT.		L.F.	
D-2	STA. 31+38.00 RT.		L.F.	
D-3	STA. 31+90.00 LT.		L.F.	
D-4	STA. 32+80.00 LT.		L.F.	
D-5	STA. 31+80.00 RT. TO STA. 34+35.40 RT.		L.F.	
D-6	STA. 31+00.00 LT. TO STA. 34+00.00 LT.		L.F.	
D-7	STA. 33+50.00 LT.		L.F.	
D-8	STA. 33+50.00 RT.		L.F.	
D-9	STA. 33+50.00 RT.		L.F.	
D-10	STA. 33+85.00 RT.		L.F.	
D-11	STA. 34+00.00 LT.		L.F.	
D-12	STA. 34+00.00 LT.		L.F.	
D-13	STA. 34+00.00 LT. TO STA. 34+06.00 LT.		L.F.	
D-14	STA. 35+35.40 RT. TO STA. 35+41.00 RT.		L.F.	
S-1	STA. 31+65.64 RT.		L.F.	
TOTALS				1077

S. R. 615 PLAN & PROFILE STA. 31+00 TO STA. 35+00