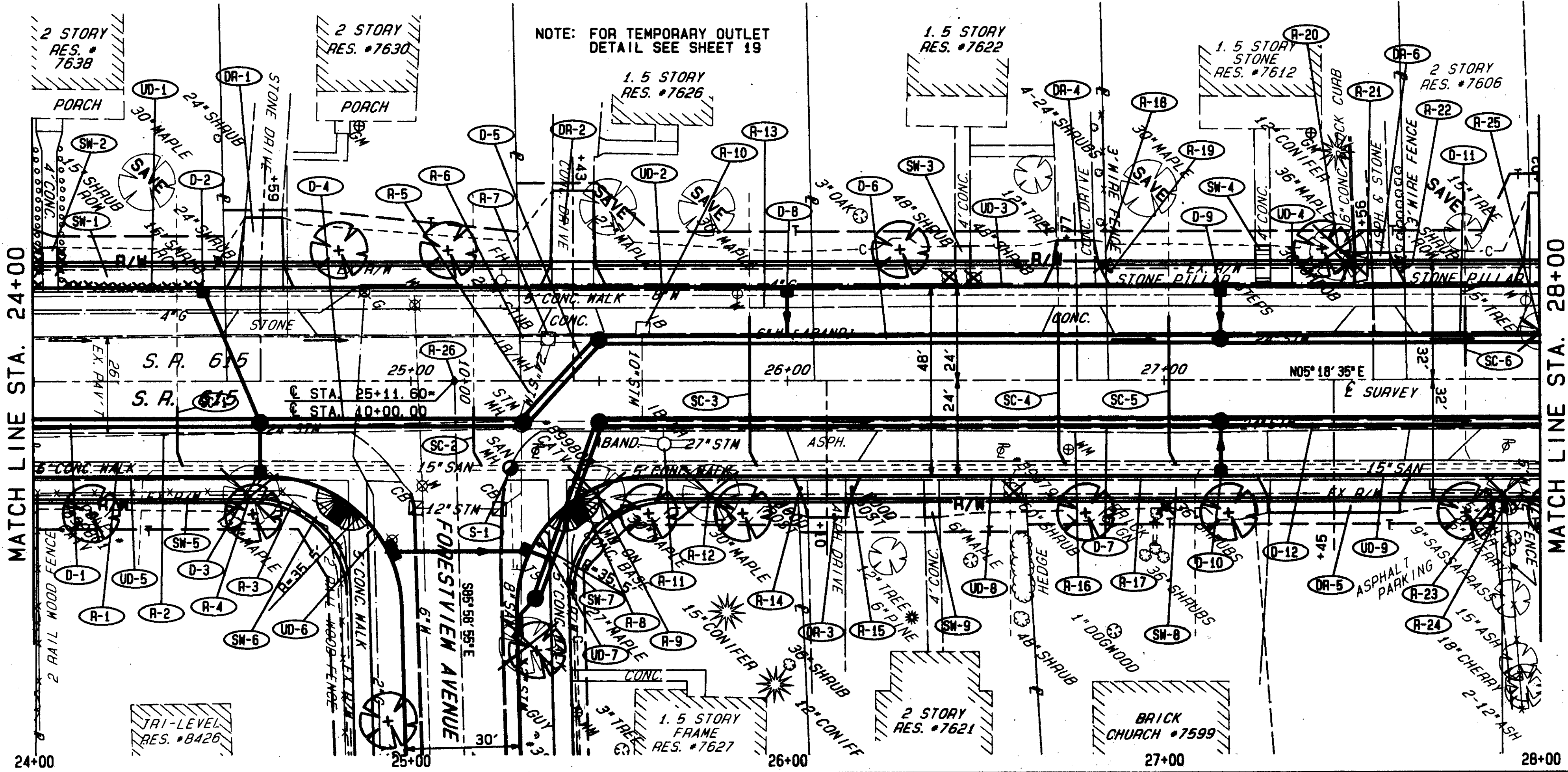
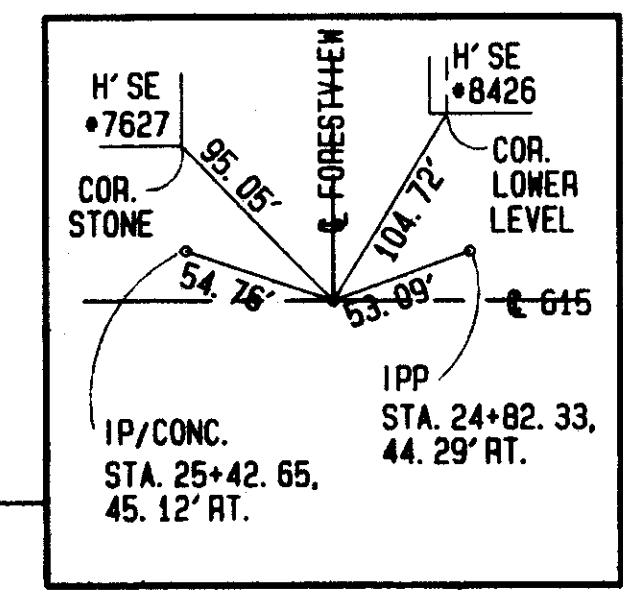


90272 FRI 03/08/96 12:00 PM RANDY FILES: PL5, PLT, PPS, PLT

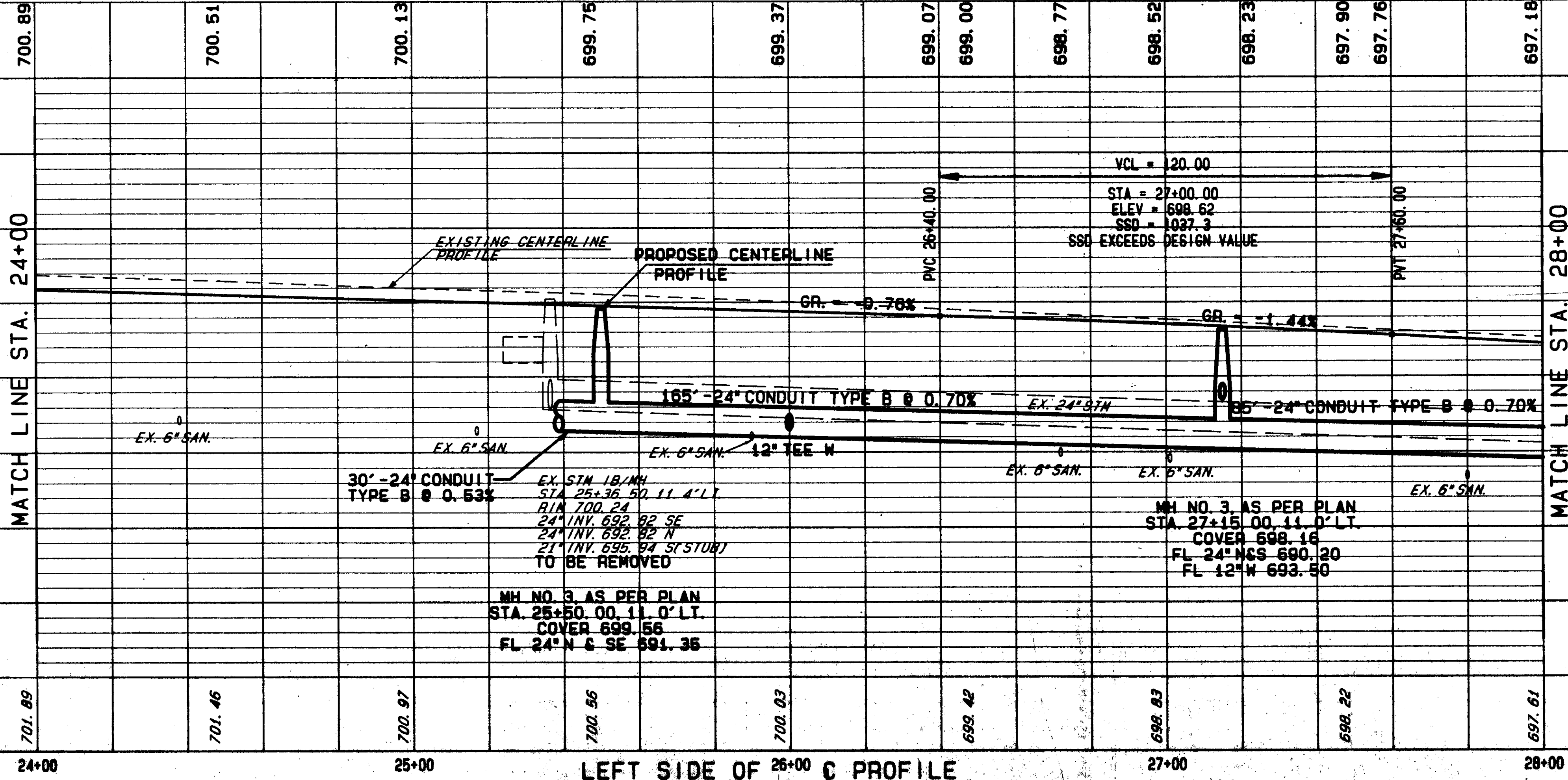


BENCH MARK #1  
 CORNER OF DOORWAY AN SHALLOW  
 CHURCH #7599  
 STA. 27+00 ± 85' RT. ±  
 ELEV. 700.23



| REF | LOCATION  | QUANTITY | UNIT | AMOUNT        |
|-----|---|----------|------|---------------|
| 604 | MONUMENT ASSEMBLY   | EA.      |      | 1             |
| 202 | REMOVAL WISC. COBBLESTONE PILLARS REMOVED AND REPLACED, AS PER PLAN | LUMP     |      | LUMP          |
| 202 | FENCE REMOVED   | L.F.     | 87   | 87            |
| 202 | CATCH BASIN OR INLET REMOVED  | EA.      |      | 1             |
| 202 | MANHOLE REMOVED   | EA.      | 1    | 1             |
| 202 | PIPE REMOVED 24" AND UNDER  | L.F.     | 129  | 23            |
| 202 | CURB REMOVED  | L.F.     | 475  | 20            |
| 202 | WALK REMOVED  | S.F.     | 2000 | 1365          |
| 202 | STRUCTURE REMOVED   | LUMP     |      | LUMP          |
| 201 | TREE AND/OR STUMP REMOVED, 30" SIZE                                 | EA.      | 1    | 1             |
| 201 | TREE AND/OR STUMP REMOVED, 18" SIZE                                 | EA.      | 1    | 1             |
|     | TOTALS  |          |      | 10 469 3 1 99 |

| REF  | LOCATION                               | QUANTITY | UNIT | AMOUNT                      |
|------|--|----------|------|-----------------------------|
| R-1  | STA. 24+00.00 RT. TO STA. 24+95.00 RT. |          |      |                             |
| R-2  | STA. 24+00.00 RT. TO STA. 25+29.33 RT. |          |      |                             |
| R-3  | STA. 24+00.00 RT. TO STA. 24+81.00 RT. |          |      |                             |
| R-4  | STA. 24+57.00 RT. TO STA. 25+36.50 LT. |          |      |                             |
| R-5  | STA. 25+29.33 RT. TO STA. 25+50.00 LT. |          |      |                             |
| R-6  | STA. 25+36.50 LT. TO STA. 25+50.00 LT. |          |      |                             |
| R-7  | STA. 25+45.00 RT. (SEE SHEET 14)       |          |      |                             |
| R-8  | STA. 25+45.00 RT.                      |          |      |                             |
| R-9  | STA. 25+61.00 LT. TO STA. 25+61.00 RT. |          |      |                             |
| R-10 | STA. 25+67.00 RT.                      |          |      |                             |
| R-11 | STA. 25+79.00 RT.                      |          |      |                             |
| R-12 | STA. 24+00.00 LT. TO STA. 28+00.00 LT. |          |      |                             |
| R-13 | STA. 24+03.00 RT.                      |          |      |                             |
| R-14 | STA. 26+17.00 RT.                      |          |      |                             |
| R-15 | STA. 26+00.00 RT. TO STA. 28+00.00 RT. |          |      |                             |
| R-16 | STA. 26+05.00 LT.                      |          |      |                             |
| R-17 | STA. 26+05.00 LT.                      |          |      |                             |
| R-18 | STA. 27+47.00 LT.                      |          |      |                             |
| R-19 | STA. 27+47.00 LT.                      |          |      |                             |
| R-20 | STA. 27+64.00 LT.                      |          |      |                             |
| R-21 | STA. 27+90.00 RT.                      |          |      |                             |
| R-22 | STA. 27+90.00 RT.                      |          |      |                             |
| R-23 | STA. 27+90.00 RT.                      |          |      |                             |
| R-24 | STA. 27+90.00 RT.                      |          |      |                             |
| R-25 | STA. 28+00.00 LT.                      |          |      |                             |
| R-26 | STA. 25+11.60                          |          |      |                             |
|      | TOTALS                                 |          |      | 2 4 LUMP 3840 10 469 3 1 99 |



QUANTITIES HAVE BEEN CARRIED TO SUB-SUMMARY SHEETS 42-45

| REF | LOCATION                                    | QUANTITY | UNIT | AMOUNT |
|-----|---|----------|------|--------|
| 604 | MANHOLE RECONSTRUCTED TO GRADE, AS PER PLAN | EA.      |      | 1      |
|     | 24" PLUG                                    | EA.      |      | 3      |
|     | 24" x 12" x 24" TEE                         | EA.      |      | 1      |
| 604 | MANHOLE, NO. 3, AS PER PLAN                 | EA.      |      | 6      |
| 604 | CATCH BASIN, NO. 3A, AS PER PLAN            | EA.      |      | 5      |
| 603 | 24" CONDUIT, TYPE B AS PER PLAN, 706.02     | L.F.     | 60   | 70     |
| 603 | 12" CONDUIT, TYPE B AS PER PLAN, 706.02     | L.F.     | 38   | 165    |
|     | TOTALS                                      |          | 86   | 680    |

FOR STORM SEWER CONNECTION SCHEDULE SEE SHEET 46  
 FOR SANITARY SEWER CONNECTION SCHEDULE SEE SHEET 47  
 FOR TYPICAL SECTIONS SEE SHEETS 4-10  
 FOR DRIVEWAY PLAN & PROFILE SEE SHEET 80  
 FOR CROSS SECTIONS SEE SHEETS 113-116  
 FOR STREETSIDE CROSS SECTIONS SEE SHEETS 125-128  
 FOR UNDERDRAIN QUANTITIES SEE SHEETS 40-41  
 FOR DRIVEWAY PROFILES SEE SHEETS 135-137  
 FOR INTERSECTION DETAILS SEE SHEET 144  
 FOR CATCH BASIN DETAILS SEE SHEETS 145-146  
 FOR SANITARY SEWER DETAILS SEE SHEETS 147-148  
 FOR DRIVEWAY DETAILS SEE SHEET 149  
 FOR DRIVEWAY MARKING PLANS SEE SHEET 161  
 FOR SIGNING PLANS SEE SHEET 165  
 \*\* SEE DETAIL ON SHEET 19

| REF  | LOCATION                               | QUANTITY | UNIT | AMOUNT |
|------|--|----------|------|--------|
| D-1  | STA. 24+00.00 RT. TO STA. 24+60.00 RT. |          |      |        |
| D-2  | STA. 24+45.00 LT. TO STA. 24+60.00 RT. |          |      |        |
| D-3  | STA. 24+60.00 RT.                      |          |      |        |
| D-4  | STA. 24+60.00 RT. TO STA. 25+30.00 RT. |          |      |        |
| D-5  | STA. 25+30.00 RT. TO STA. 25+50.00 LT. |          |      |        |
| D-6  | STA. 25+50.00 LT. TO STA. 27+15.00 LT. |          |      |        |
| D-7  | STA. 25+50.00 RT. TO STA. 27+15.00 RT. |          |      |        |
| D-8  | STA. 26+00.00 LT.                      |          |      |        |
| D-9  | STA. 27+15.00 LT.                      |          |      |        |
| D-10 | STA. 27+15.00 LT. TO STA. 28+00.00 LT. |          |      |        |
| D-11 | STA. 27+15.00 LT. TO STA. 28+00.00 RT. |          |      |        |
| D-12 | STA. 27+15.00 RT. TO STA. 28+00.00 RT. |          |      |        |
| S-1  | STA. 25+26.35 RT.                      |          |      |        |
|      | TOTALS                                 |          |      | 20     |