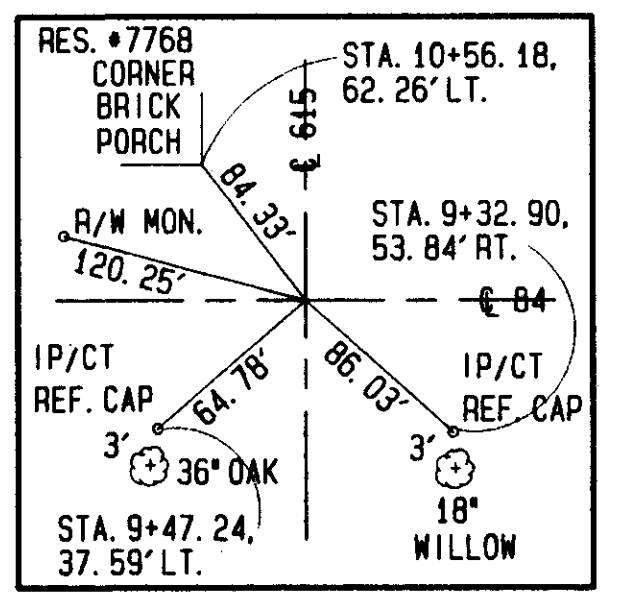
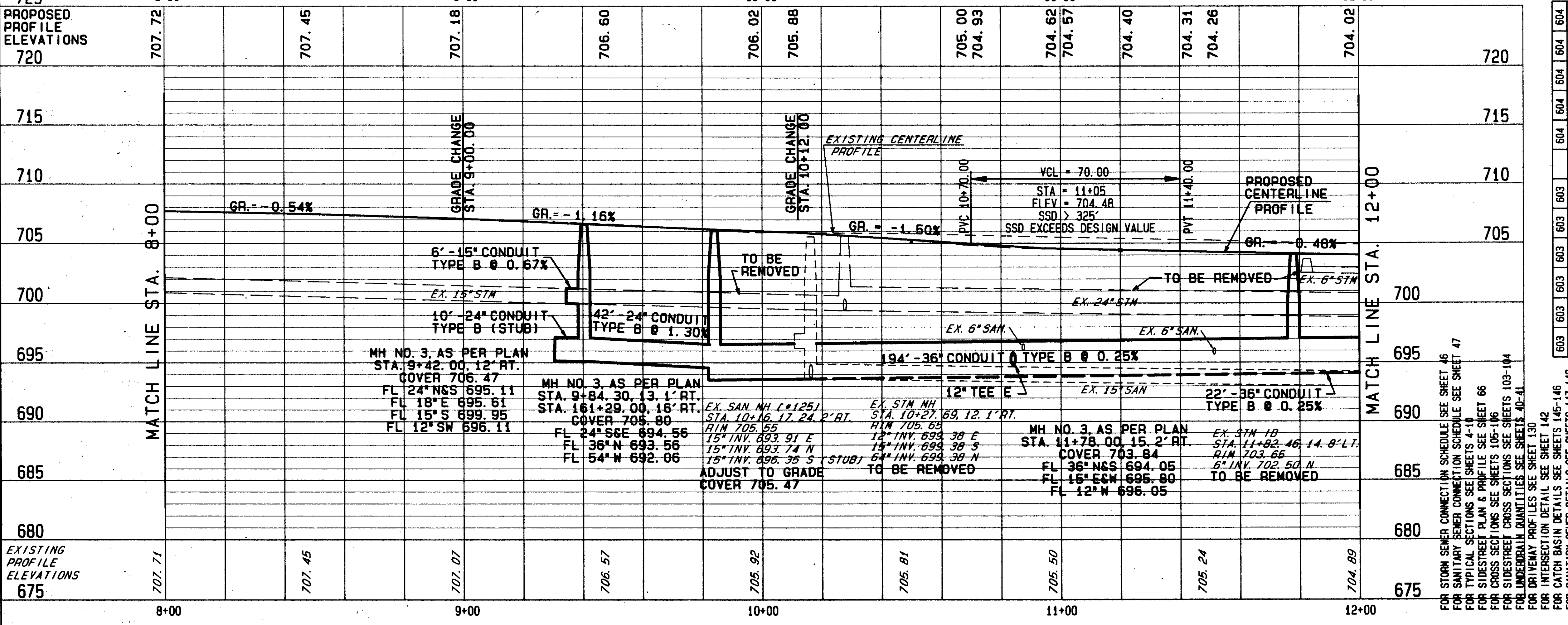


QUANTITIES HAVE BEEN CARRIED TO SUB-SUMMARY SHEETS 42-45

NO.	DESCRIPTION	UNIT	AMOUNT
202	FENCE REMOVED	L.F.	170
202	CATCH BASIN OR INLET REMOVED	EA.	80
202	MANHOLE REMOVED	EA.	1
202	PIPE REMOVED 24\"/>		



REF.	LOCATION	DESCRIPTION	AMOUNT
R-1	STA. 8+00.00 LT. TO STA. 9+64.00 LT.	ROADWAY	
R-2	STA. 8+00.00 LT. TO STA. 9+68.00 LT.	ROADWAY	
R-3	STA. 9+42.00 LT. TO STA. 9+56.00 RT.	ROADWAY	
R-4	STA. 9+56.00 LT. TO STA. 9+61.00 RT.	ROADWAY	
R-5	STA. 10+28.00 RT. TO STA. 10+95.00 RT.	ROADWAY	
R-6	STA. 10+31.00 RT. TO STA. 10+95.00 RT.	ROADWAY	
R-7	STA. 10+28.00 RT. TO STA. 12+00.00 RT.	ROADWAY	
R-8	STA. 10+28.00 RT. TO STA. 10+66.00 RT.	ROADWAY	
R-9	STA. 10+66.00 LT. TO STA. 10+66.00 RT.	ROADWAY	
R-10	STA. 10+66.00 RT. TO STA. 12+00.00 LT.	ROADWAY	
R-11	STA. 10+69.00 RT.	ROADWAY	
R-12	STA. 10+18.00 LT. TO STA. 12+00.00 LT.	ROADWAY	
R-13	STA. 11+16.00 RT.	ROADWAY	
R-14	STA. 11+25.00 LT.	ROADWAY	
R-15	STA. 11+49.00 RT.	ROADWAY	
R-16	STA. 11+78.00 RT.	ROADWAY	
R-17	STA. 11+82.00 LT. TO STA. 12+00.00 RT.	ROADWAY	
R-18	STA. 11+82.00 LT. TO STA. 12+00.00 LT.	ROADWAY	
R-19	STA. 11+87.00 RT.	ROADWAY	
TOTALS			2590



NO.	DESCRIPTION	UNIT	AMOUNT
604	MANHOLE RECONSTRUCTED TO GRADE, AS PER PLAN TYPE 2	EA.	1
604	MANHOLE, NO. 3, AS PER PLAN	EA.	2
604	INLET, NO. 1, AS PER PLAN	EA.	1
604	CATCH BASIN, NO. 4, W/ F GATE, AS PER PLAN	EA.	1
604	CATCH BASIN, NO. 3A, AS PER PLAN	EA.	3
603	36\"/>		

REF.	LOCATION	DESCRIPTION	AMOUNT
D-1	STA. 9+25.00 LT. TO STA. 9+42.00 RT.	DRAINAGE & SANITARY	
D-2	STA. 9+31.00 RT. TO STA. 9+42.00 RT.	DRAINAGE & SANITARY	
D-3	STA. 9+42.00 RT.	DRAINAGE & SANITARY	
D-4	STA. 9+42.00 RT. TO STA. 9+84.30 RT.	DRAINAGE & SANITARY	
D-5	STA. 9+84.30 RT. TO STA. 11+78.00 RT.	DRAINAGE & SANITARY	
D-6	STA. 10+84.00 RT.	DRAINAGE & SANITARY	
D-7	STA. 11+85.00 LT. TO STA. 11+78.00 RT.	DRAINAGE & SANITARY	
D-8	STA. 11+78.00 RT.	DRAINAGE & SANITARY	
D-9	STA. 11+78.00 RT.	DRAINAGE & SANITARY	
D-10	STA. 11+78.00 RT. TO STA. 12+00.00 RT.	DRAINAGE & SANITARY	
S-1	STA. 10+16.17 RT.	DRAINAGE & SANITARY	
TOTALS			216

S. R. 615 PLAN & PROFILE STA. 8+00 TO STA. 12+00