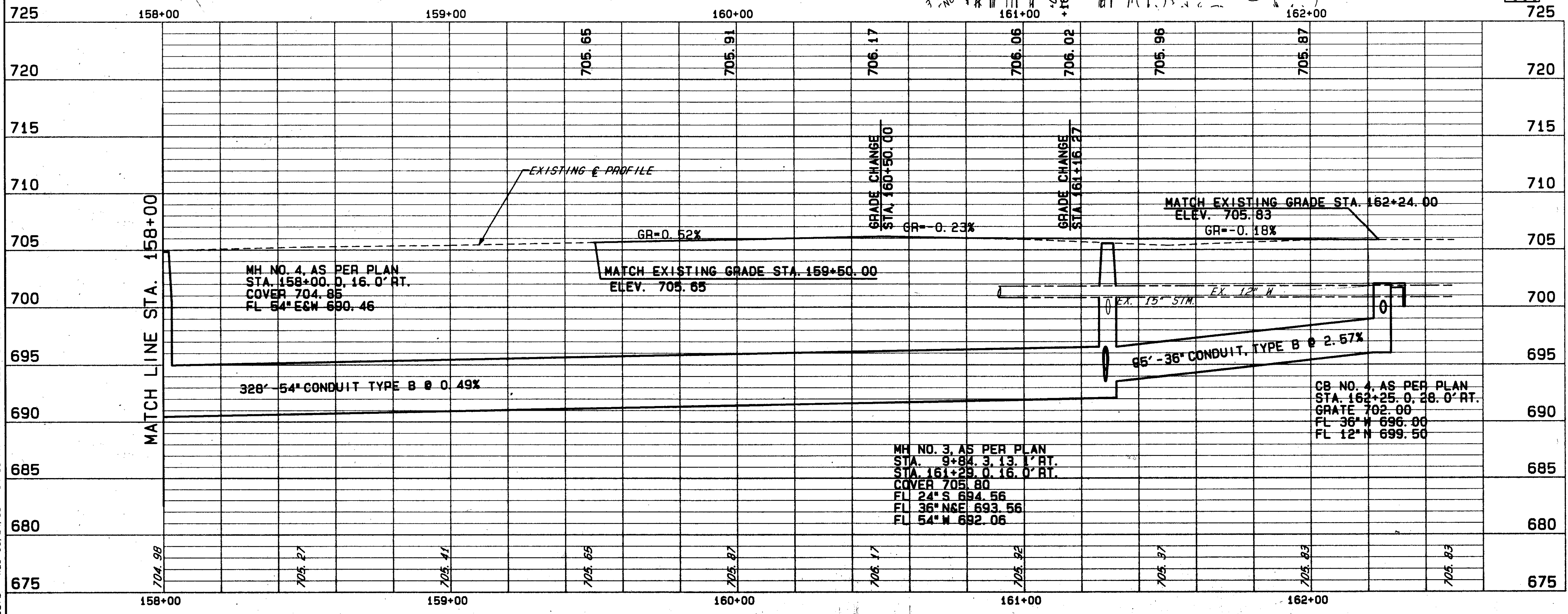
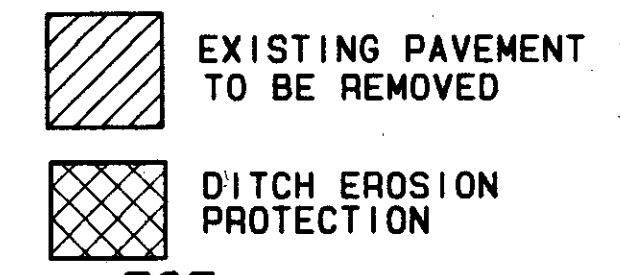


QUANTITIES HAVE BEEN CARRIED TO SUB-SUMMARY SHEETS 42-45



STATION	DESCRIPTION	EA	L.F.	EA	L.F.	TOTALS
604	MANHOLE NO. 3, AS PER PLAN	EA	1	1		1
604	INLET NO. 1, AS PER PLAN	EA	1	1		1
604	CATCH BASIN NO. 4, WITH E GRATE, AS PER PLAN	EA	1	1		1
603	54" CONDUIT, TYPE B, AS PER PLAN (A) 706.02	L.F.	328		328	328
603	36" CONDUIT, TYPE B, AS PER PLAN, 706.02	LUMP	95		95	95
603	12" CONDUIT, TYPE B AS PER PLAN, 706.02	EA	55		55	55
	TOTALS					

STATION	DESCRIPTION	EA	L.F.	EA	L.F.	TOTALS
D-1	LOCATION STA. 158+00 RT. TO STA. 161+25.00 RT.					
D-2	LOCATION STA. 161+29.00 RT. TO STA. 162+25.00 RT.					
D-3	LOCATION STA. 162+00.00 LT. TO STA. 162+25.00 RT.					
	TOTALS					

STATION	DESCRIPTION	EA	L.F.	EA	L.F.	TOTALS
202	CATCH BASIN OR INLET REMOVED	EA	1	1		2
202	PIPE REMOVED 24" AND UNDER	L.F.	71	43		117
202	STRUCTURE REMOVED	LUMP	23		23	23
201	TREE AND/OR STUMP REMOVED, 30" SIZE	EA	1		1	1
	TOTALS					

FOR TYPICAL SECTION SEE SHEET 4-10
 FOR SUBSTREET PLAN & PROFILE SEE SHEET 67
 FOR CROSS SECTIONS SEE SHEET 68
 FOR SUBSTREET CATCH BASIN DETAILS SEE SHEET 105-107
 FOR INTERSECTION DETAILS SEE SHEET 142
 FOR CATCH BASIN DETAILS SEE SHEET 143-146
 FOR ROADWAY DETAILS SEE SHEET 149

STATION	DESCRIPTION	EA	L.F.	EA	L.F.	TOTALS
R-1	LOCATION STA. 161+29.00 LT. TO STA. 162+01.00 LT.					
R-2	LOCATION STA. 162+01.00 LT. TO STA. 162+00.00 RT.					
R-3	LOCATION STA. 162+00.00 RT. TO STA. 162+24.00 RT.					
R-4	LOCATION STA. 160+44.00 RT.					
	TOTALS					