

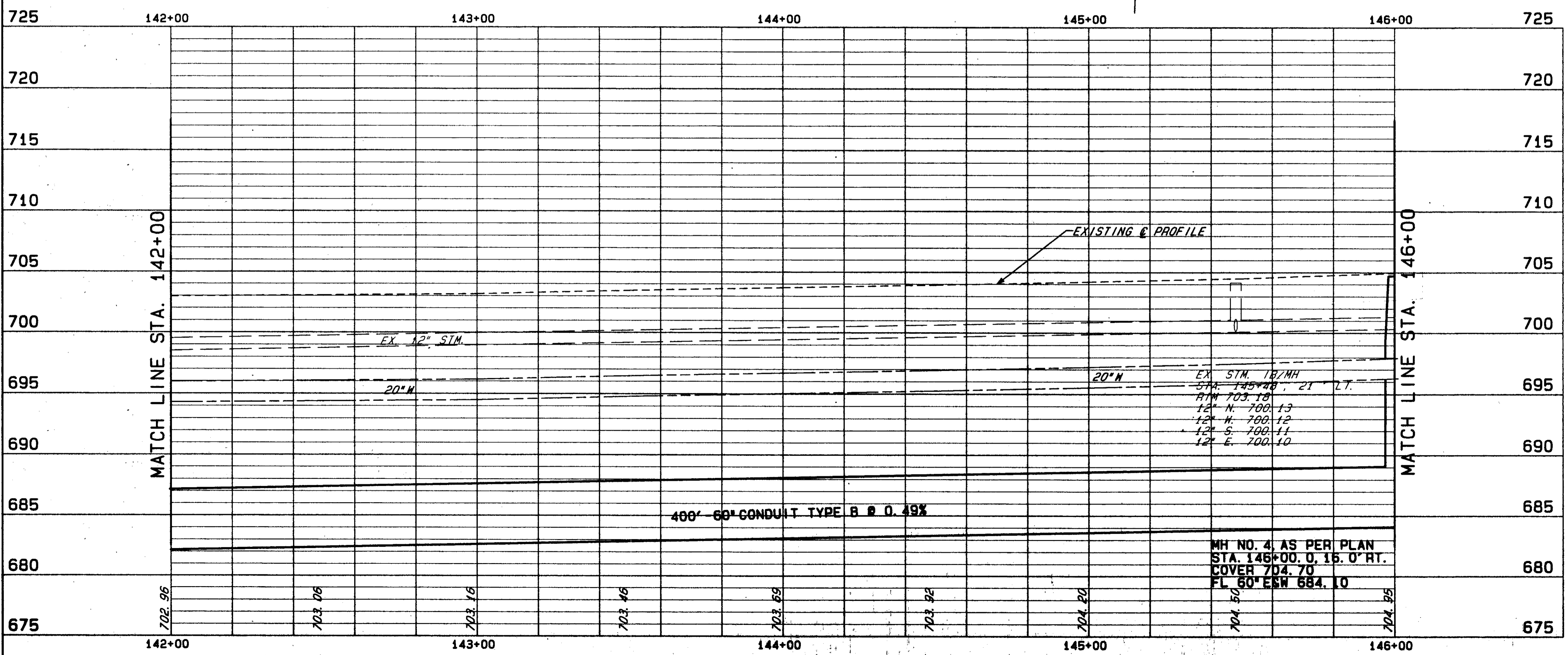
QUANTITIES HAVE BEEN CARRIED
 TO SUB-SUMMARY SHEETS 42-45
 FOR TYPICAL SECTION SEE SHEET 4
 FOR CROSS SECTIONS SEE SHEET 88-91
 FOR ROADWAY DETAILS SEE SHEET 149

EXISTING PAVT
 TO BE REMOVED

NO.	DESCRIPTION	EA.	L.F.	TOTALS
604	MANHOLE NO. 4, AS PER PLAN	EA.	1	1
604	CATCH BASIN NO. 2-2B, AS PER PLAN	EA.	1	1
603	60" CONDUIT, TYPE B AS PER PLAN (A) 706.02, 1500 D-LOAD	L.F.	400	400
603	12" CONDUIT, TYPE B AS PER PLAN, 706.02	EA.	6	6
TOTALS				6

DRAINAGE AND SANITARY		LOCATION	EA.	TOTALS
D-1	STA. 142+00.00 RT. TO STA. 146+00.00 RT.		1	1
D-2	STA. 145+49.60 RT.		1	1
TOTALS				2

ROADWAY		LOCATION	EA.	TOTALS
R-1	STA. 143+06.00 RT.		1	1
R-2	STA. 145+96.00 RT.		1	1
TOTALS				2



S. R. 84 PLAN & PROFILE STA. 142+00 TO STA. 146+00

90272 MED 05/10/95 09:46 AM PAM FILES: 84PL6.PLT 84PR6.PLT