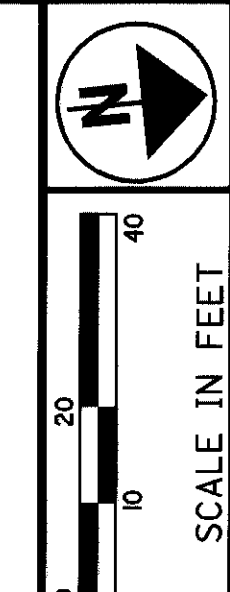


LOT 10, TRACT 2, T-9-N, R-9-W, C.W.R.
ORIGINAL MENTOR TOWNSHIP
KIRTLAND HILLS VILLAGE, LAKE COUNTY, OHIO



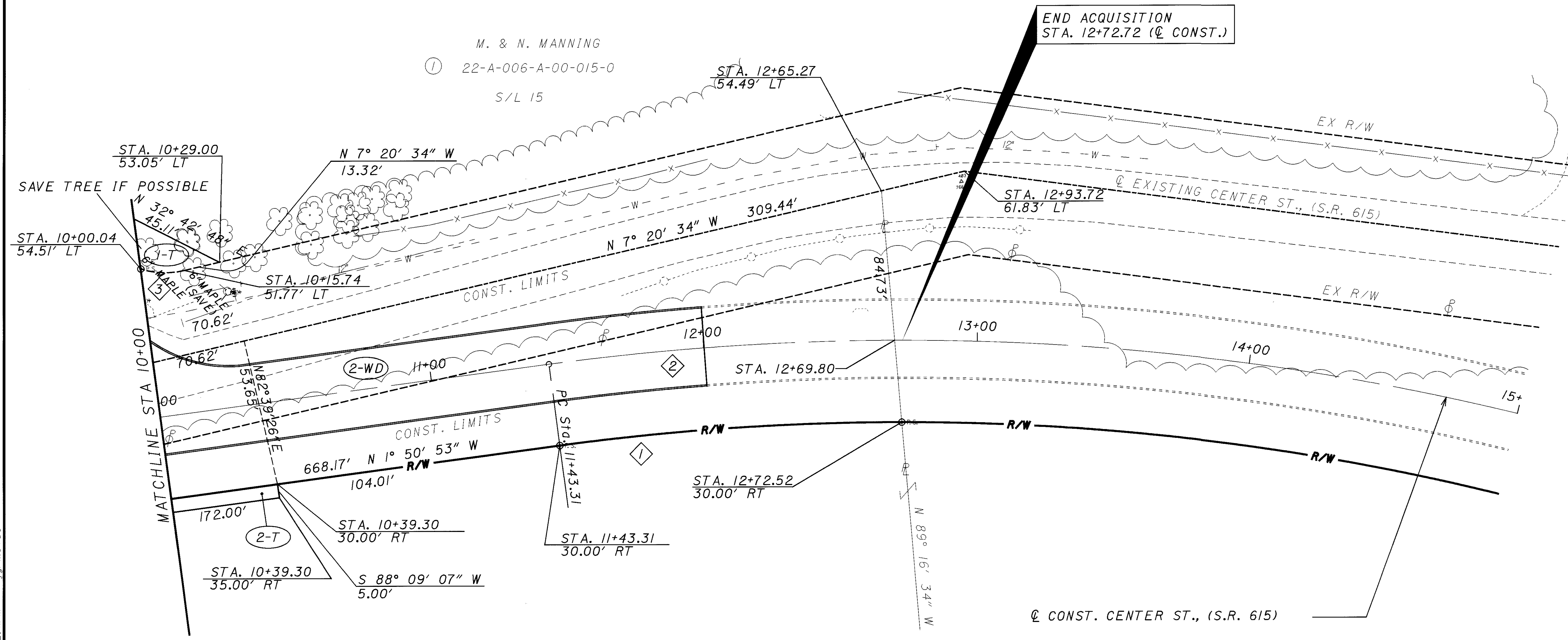
PID NO. 12790

RAW DESIGNER FDS
RAW REVIEWER DAS

RIGHT OF WAY PLAN
STA 10+00 TO 15+00 CENTER STREET

LAK-615-1.26

17/19
158
160



M. & N. MANNING
① 22-A-006-A-00-015-0
S/L 15

② JEROME T. OSBORNE
22-A-006-0-00-004-0

PROP S.R. 615 @
R/W CURVE DATA
P.I. STA = 13+31.33
D = 22° 16' 37" (RT)
R = 954.93'
T = 188.02'
L = 371.28'
P.C. STA = 11+43.31
P.T. STA = 15+14.59

STRUCTURE KEY

- RESIDENTIAL
- COMMERCIAL
- ▨ OUT-BUILDING

MONUMENT LEGEND

- ▣ EXISTING R/W MONUMENT BOX
- ▤ PROPOSED R/W MONUMENT BOX
- I.P.F. IRON PIN FOUND
- ⊙ I.P.F. IRON PIN FOUND W/ ID CAP
- ⊙ P.F. IRON PIPE FOUND
- ⊙ P.S. IRON PIPE SET
- ⊙ P.K.F. P.K. NAIL FOUND
- ⊙ P.K.S. P.K. NAIL SET

NOTE: THE EXISTING R/W WIDTH AND LOCATION WERE DETERMINED USING DEEDS AND PLATS ON FILE AT THE LAKE COUNTY RECORDER'S OFFICE.
ROAD RECORDS ON FILE AT THE LAKE COUNTY ENGINEER'S OFFICE.

CURVE DATA

CURVE	RADIUS	ARC LENGTH	CHORD LENGTH	CHORD BEARING
1	924.93'	125.15'	125.05'	N 1° 59' 26" E
2	954.93'	371.28'	368.95'	N 9° 17' 25" E
3	30.00'	16.13'	15.94'	S 8° 03' 37" W

REV. BY	DATE	DESCRIPTION
2	10/30/00	Revised PCL IT changed a tree from take to SAVE IF POSSIBLE
1	8/28/00	Revised tree (6" maple) on Parcel IT from take to save
DATE COMPLETED		

I:\PROJECTS\PLD\2790\17\12790RPF.dgn 06-NOV-2000 2:41PM jgr:mvse