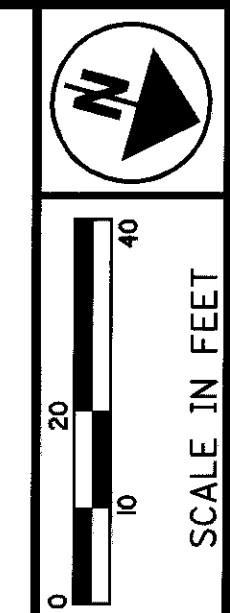


LOT 7. TRACT 1, T-9-M, R-9-W, C.W.R.  
 ORIGINAL KIRTLAND TOWNSHIP  
 KIRTLAND HILLS VILLAGE, LAKE COUNTY, OHIO

**MONUMENT LEGEND**

- ◻ EXISTING R/W MONUMENT BOX
- ◻ PROPOSED R/W MONUMENT BOX
- I.P.F. IRON PIN FOUND
- ⊙ I.P.F. IRON PIN FOUND W/ ID CAP
- ⊙ P.F. IRON PIPE FOUND
- ⊙ P.S. IRON PIPE SET
- ⊙ P.K.F. P.K. NAIL FOUND
- P.K.S. P.K. NAIL SET



PID NO. **12790**  
 FDS  
 R/W DESIGNER  
 R/W REVIEWER  
 DAS

**RIGHT OF WAY PLAN**  
**STA 0+00 TO 5+00 CENTER STREET**

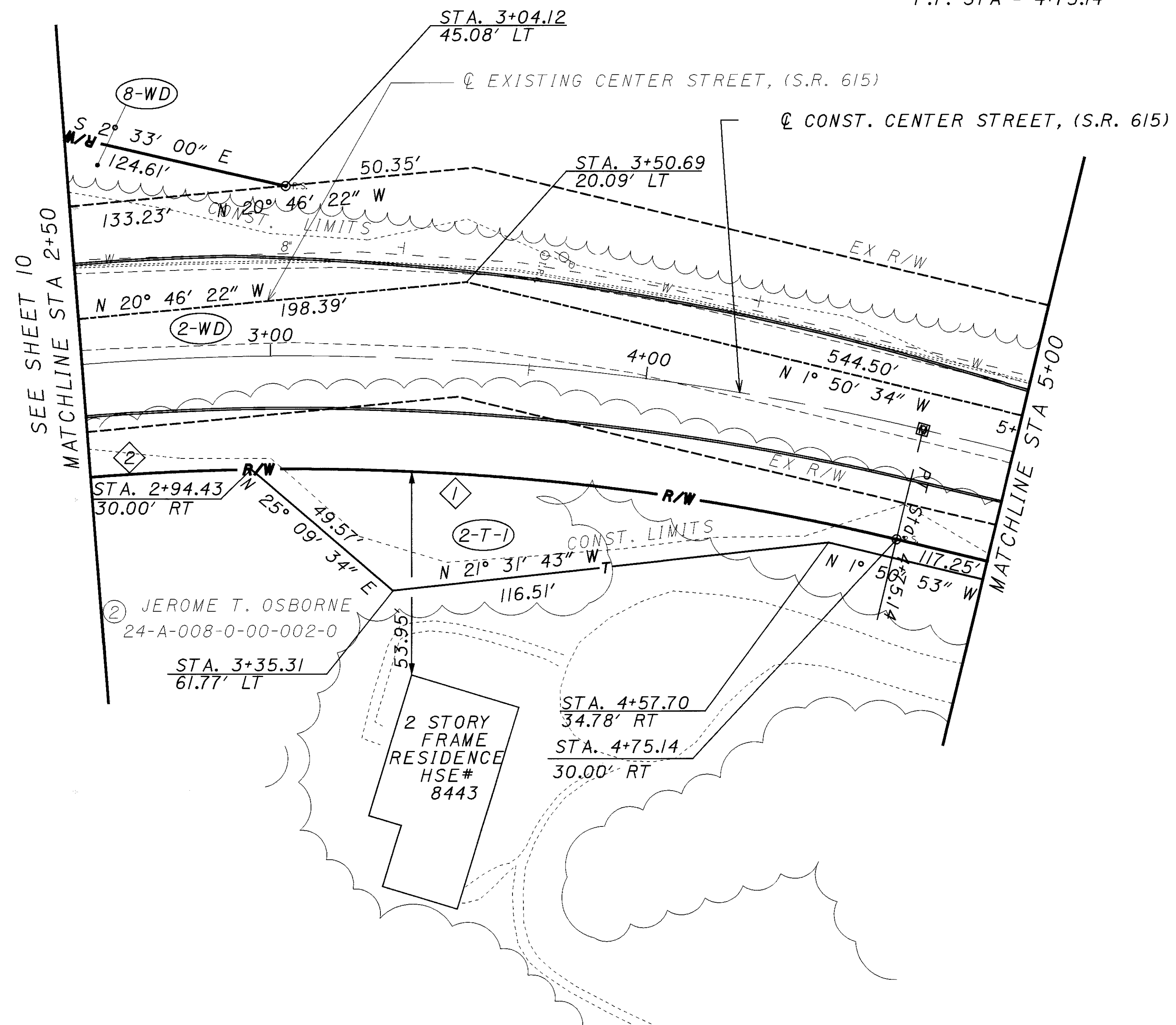
**LAK-615-1.26**

15 / 19

156  
160

PROP S.R. 615 @  
 R/W CURVE DATA  
 P.I. STA = 3+57.70  
 D = 18°57'57" (RT)  
 R = 716.20'  
 T = 119.63'  
 L = 237.07'  
 P.C. STA = 2+38.07  
 P.T. STA = 4+75.14

⑧ B. & P. SEELINGER  
 24-A-006-A-00-016-0  
 S/L 2  
 HSE #8350



SEE SHEET 10  
 MATCHLINE STA 2+50

MATCHLINE STA 5+00

**STRUCTURE KEY**

- ◻ RESIDENTIAL
- ◼ COMMERCIAL
- ▨ OUT-BUILDING

NOTE: THE EXISTING R/W WIDTH AND LOCATION WERE DETERMINED USING DEEDS AND PLATS ON FILE AT THE LAKE COUNTY RECORDER'S OFFICE.  
 ROAD RECORD'S ON FILE AT THE LAKE COUNTY ENGINEER'S OFFICE.

**CURVE DATA**

CURVE	RADIUS	ARC LENGTH	CHORD LENGTH	CHORD BEARING
1	686.20'	173.14'	172.68'	N 9° 04' 36" W
2	686.20'	227.14'	226.11'	S 11° 19' 52" E

REV. BY	DATE	DESCRIPTION

I:\PROJECTS\PI\2790\FW\2790RPI.dgn 06-NOV-2000 2:40PM jgr-mov-se