

PID NO. 12790

R/W DESIGNER FDS
R/W REVIEWER DAS

RIGHT OF WAY PLAN
STA 18+00 TO 23+00 CHILLICOTHE

LAK-615-1.26

10/19

151
160

LOT 7, TRACT 1, T-9-N, R-9-W, C.W.R.,
ORIGINAL KIRTLAND TOWNSHIP,
KIRTLAND HILLS VILLAGE, LAKE COUNTY, OHIO

MONUMENT LEGEND

- ◻ EXISTING R/W MONUMENT BOX
- ◻ PROPOSED R/W MONUMENT BOX
- I.P.F. IRON PIN FOUND
- ◐ I.P.F. IRON PIN FOUND W/ ID CAP
- ⊙ I.P.F. IRON PIPE FOUND
- ⊙ I.P.F. IRON PIPE SET
- ⊙ P.K.F. P.K. NAIL FOUND
- ⊙ P.K.F. P.K. NAIL SET

PROP. S.R. 615 @
R/W CURVE DATA
P.I. STA = 3+57.70
D = 18°57'57" (RT.)
R = 716.20'
T = 119.63'
L = 237.07'
P.C. STA = 2+38.07
P.T. STA = 4+75.14

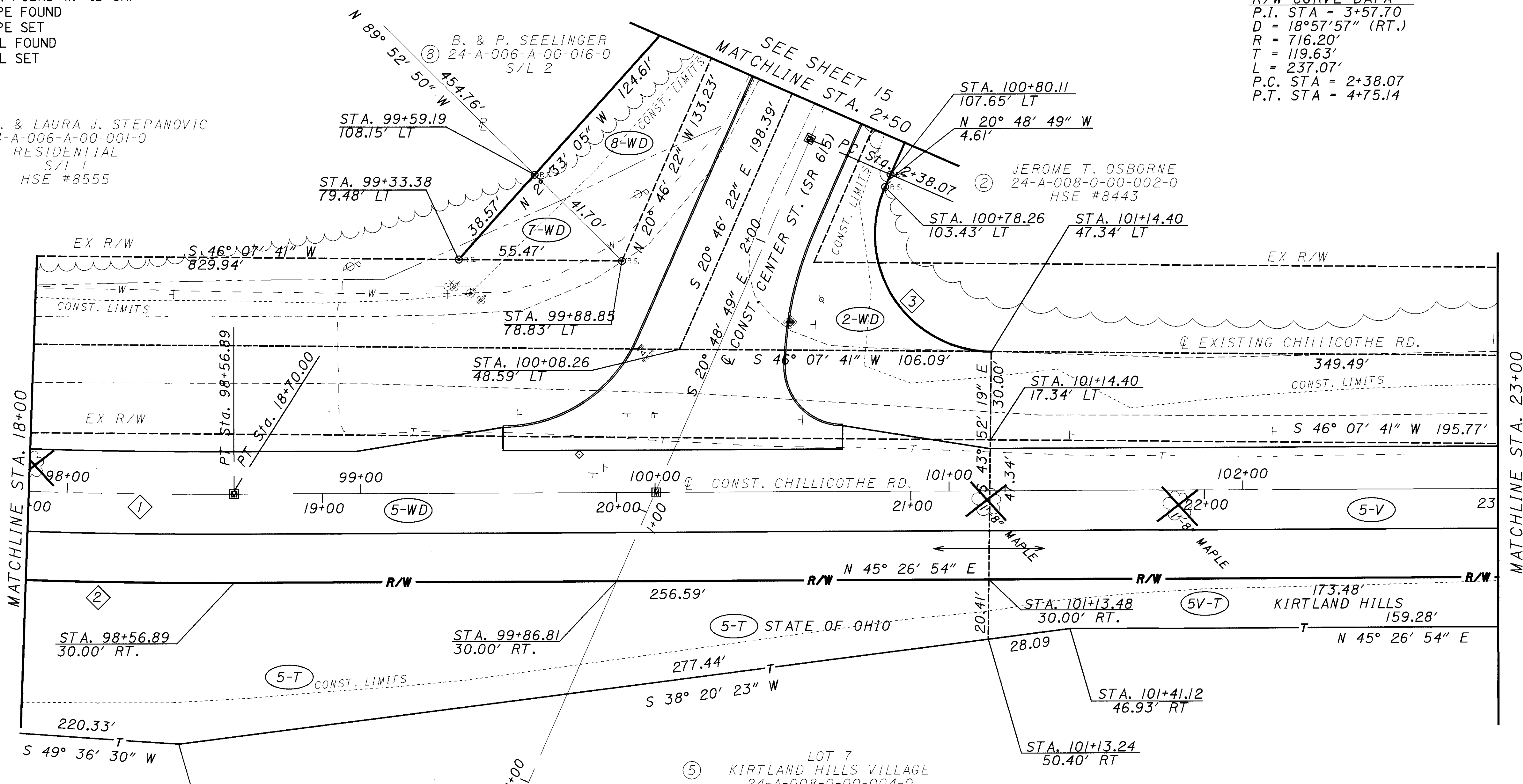
⑦ RONALD A. & LAURA J. STEPANOVIC
24-A-006-A-00-001-0
RESIDENTIAL
S/L 1
HSE #8555

B. & P. SEELINGER
24-A-006-A-00-016-0
S/L 2

JEROME T. OSBORNE
24-A-008-0-00-002-0
HSE #8443

⑤ LOT 7
KIRTLAND HILLS VILLAGE
24-A-008-0-00-004-0

① PROP. CHILLCOTHE
R/W CURVE DATA
P.I. STA = 97+32.07
D = 7°29'59" (LT.)
R = 1909.86'
T = 125.17'
L = 249.99'
P.C. STA = 96+06.90
P.T. STA = 98+56.89



STRUCTURE KEY

- ◻ RESIDENTIAL
- ◼ COMMERCIAL
- ▨ OUT-BUILDING

NOTE: THE EXISTING R/W WIDTH AND LOCATION WERE DETERMINED USING DEEDS AND PLATS ON FILE AT THE LAKE COUNTY RECORDER'S OFFICE.

ROAD RECORDS ON FILE AT THE LAKE COUNTY ENGINEER'S OFFICE.

CURVE DATA

CURVE	RADIUS	ARC LENGTH	CHORD LENGTH	CHORD BEARING
1	1909.86'	249.99'	249.81'	N 49° 11' 54" E
2	1939.86'	253.91'	253.73'	N 49° 11' 54" E
3	40.00'	78.93'	66.73'	S 77° 20' 35" E

REV. BY	DATE	DESCRIPTION