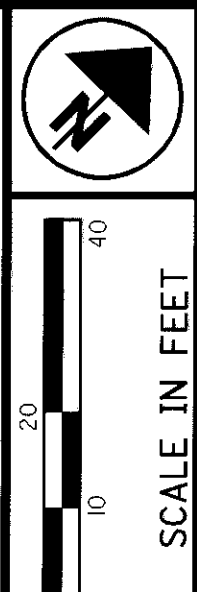


LOT 7, TRACT 1, T-9-N, R-9-W, C.W.R.,
ORIGINAL KIRTLAND TOWNSHIP,
KIRTLAND HILLS VILLAGE, LAKE COUNTY, OHIO



PID NO. **12790**
FDS R/W REVIEWER DAS

**RIGHT OF WAY PLAN
STA 8+00 TO 13+00 CHILLICOTHE**

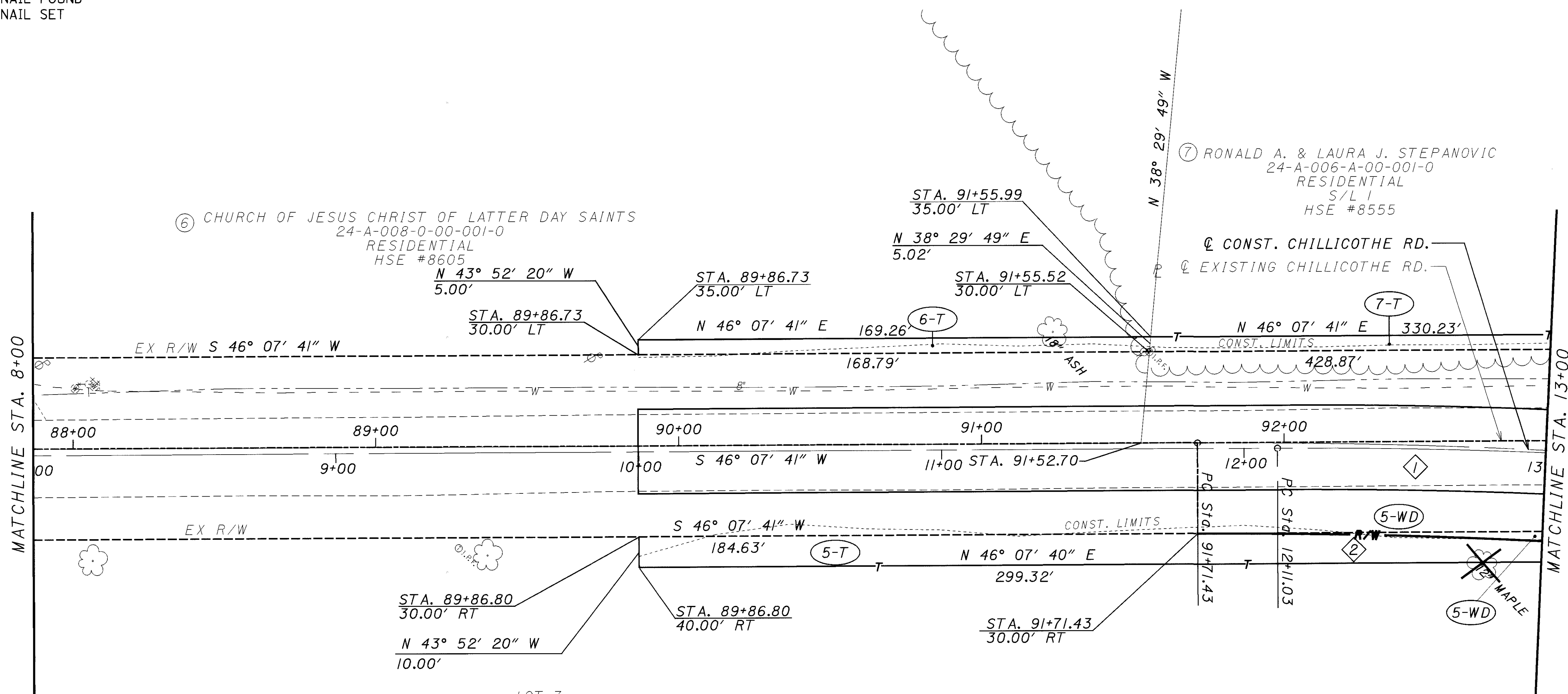
LAK-615-1.26

8 / 19

149
160

MONUMENT LEGEND

- ◻ EXISTING R/W MONUMENT BOX
- ◻ PROPOSED R/W MONUMENT BOX
- I.R.F. IRON PIN FOUND
- ⊙ I.R.F. IRON PIN FOUND W/ ID CAP
- ⊙ R.F. IRON PIPE FOUND
- ⊙ R.S. IRON PIPE SET
- ⊙ R.K.F. P.K. NAIL FOUND
- R.K.S. P.K. NAIL SET



NOTE: THE EXISTING R/W WIDTH AND LOCATION WERE DETERMINED USING DEEDS AND PLATS ON FILE AT THE LAKE COUNTY RECORDER'S OFFICE.

ROAD RECORDS ON FILE AT THE LAKE COUNTY ENGINEER'S OFFICE.

LOT 7
KIRTLAND HILLS VILLAGE
24-A-008-0-00-004-0
AGRICULTURAL

PROP. CHILLICOTHE
CONST. CURVE DATA
P.I. STA = 13+24.84
D = 6°49'13" (RT)
Dc = 3°00'00"
R = 1909.86'
T = 113.81'
L = 227.34'
E = 3.39'
P.C. STA = 12+11.03
P.T. STA = 14+38.38

PROP. CHILLICOTHE
R/W CURVE DATA
P.I. STA = 92+95.57
D = 6°49'12" (RT)
Dc = 2°45'00"
R = 2,083.48'
T = 124.15'
L = 248.00'
E = 3.70'
P.C. STA = 91+71.43
P.T. STA = 94+19.43

STRUCTURE KEY

- ◻ RESIDENTIAL
- ◼ COMMERCIAL
- ▨ OUT-BUILDING

CURVE DATA

CURVE	RADIUS	ARC LENGTH	CHORD LENGTH	CHORD BEARING
1	2083.48'	248.00'	247.86'	S 49° 32' 17" W
2	2053.48'	244.43'	244.29'	S 49° 32' 17" W

REV. BY	DATE	DESCRIPTION

I:\PROJECTS\12790\FW\12790RFB.dgn 06-NOV-2000 2:33PM jgr movise