

LAK-615-1.26

LOTS 6 & 7, TRACT I, T-9-N, R-9-W, C.W.R.
ORIGINAL KIRTLAND TOWNSHIP
KIRTLAND HILLS VILLAGE, LAKE COUNTY, OHIO

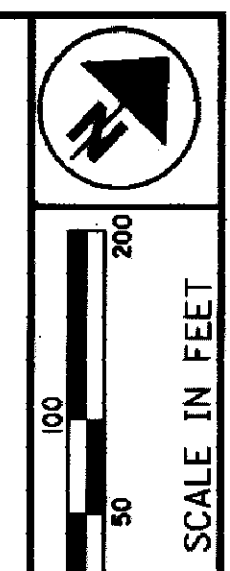
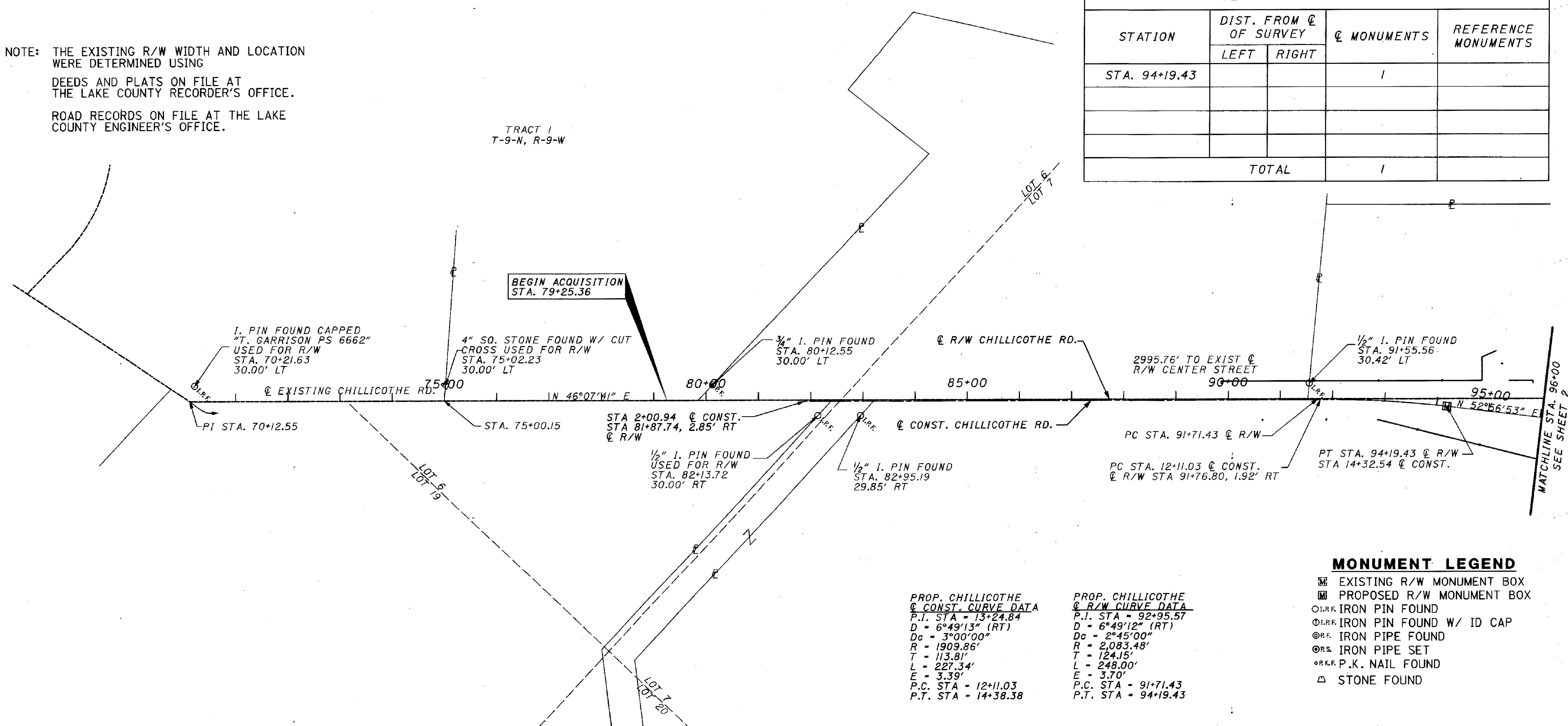
BASIS FOR BEARINGS:

ALL BEARINGS SHOWN ARE FOR PROJECT USE ONLY.
BEARINGS ARE BASED ON INFORMATION SUPPLIED
TO BURGESS & NIPLE, LIMITED BY THE OHIO
DEPARTMENT OF TRANSPORTATION

ADJUSTABLE CENTERLINE MONUMENTS, REFERENCE MONUMENTS
AND RIGHT OF WAY MONUMENTS ARE SHOWN ON STANDARD
CONSTRUCTION DRAWING RM 1.1M (REV. 4-8-97) OF THE OHIO
DEPARTMENT OF TRANSPORTATION. THE PLACING OF THE
MONUMENTS SHALL BE UNDER THE DIRECTION OF A SURVEYOR
REGISTERED IN THE STATE OF OHIO AND ARE TO BE SET, AS
SHOWN, BY THE HIGHWAY CONTRACTOR AT THE TIME OF
CONSTRUCTION. ANY ALTERATIONS, WITH PRIOR APPROVAL OF
THE OHIO DEPARTMENT OF TRANSPORTATION, SHALL BE NOTED
AND O.D.O.T. SHALL BE NOTIFIED OF THE NEW LOCATIONS.

NOTE: THE EXISTING R/W WIDTH AND LOCATION
WERE DETERMINED USING
DEEDS AND PLATS ON FILE AT
THE LAKE COUNTY RECORDER'S OFFICE.
ROAD RECORDS ON FILE AT THE LAKE
COUNTY ENGINEER'S OFFICE.

MONUMENTS TO BE SET DURING CONSTRUCTION			
STATION	DIST. FROM \odot OF SURVEY		REFERENCE MONUMENTS
	LEFT	RIGHT	
STA. 94+19.43			1
TOTAL			1



PID NO. 12790
R/W DESIGNER FDS
R/W REVIEWER DAS

CENTERLINE PLAT

LAK-615-1.26

1/19
142
160

TRACT I
T-9-N, R-9-W

BEGIN ACQUISITION
STA. 79+25.36

1/2" I. PIN FOUND CAPPED
"T. GARRISON PS 6662"
USED FOR R/W
STA. 70+21.63
30.00' LT

4" SQ. STONE FOUND W/ CUT
CROSS USED FOR R/W
STA. 75+02.23
30.00' LT

3/4" I. PIN FOUND
STA. 80+12.55
30.00' LT

1/2" I. PIN FOUND
STA. 91+55.56
30.42' LT

PI STA. 70+12.55

STA. 75+00.15

STA 2+00.94 \odot CONST.
STA 81+87.74, 2.85' RT
 \odot R/W

1/2" I. PIN FOUND
USED FOR R/W
STA. 82+13.72
30.00' RT

1/2" I. PIN FOUND
STA. 82+95.19
29.85' RT

PC STA. 91+71.43 \odot R/W

PC STA. 12+11.03 \odot CONST.
 \odot R/W STA 91+76.80, 1.92' RT

PT STA. 94+19.43 \odot R/W
STA 14+32.54 \odot CONST.

PROP. CHILLICOTHE
 \odot CONST. CURVE DATA
P.I. STA = 13+24.84
D = 6°49'13" (RT)
Dc = 3°00'00"
R = 1909.86'
T = 113.81'
L = 227.34'
E = 3.39'
P.C. STA = 12+11.03
P.T. STA = 14+38.38

PROP. CHILLICOTHE
 \odot R/W CURVE DATA
P.I. STA = 92+95.57
D = 6°49'12" (RT)
Dc = 2°45'00"
R = 2,083.48'
T = 124.15'
L = 248.00'
E = 3.70'
P.C. STA = 91+71.43
P.T. STA = 94+19.43

MONUMENT LEGEND

- \square EXISTING R/W MONUMENT BOX
- \square PROPOSED R/W MONUMENT BOX
- \odot I.R.F. IRON PIN FOUND
- \odot I.R.F. IRON PIN FOUND W/ ID CAP
- \odot I.P.F. IRON PIPE FOUND
- \odot I.P.S. IRON PIPE SET
- \odot P.K.F. P.K. NAIL FOUND
- \triangle STONE FOUND

I HEREBY CERTIFY THAT THIS PLAT IS A TRUE
DELINIAION OF A SURVEY MADE FOR THE OHIO
DEPARTMENT OF TRANSPORTATION IN 1999 BY
BURGESS & NIPLE, LIMITED.

THE ESTABLISHMENT OF THE PROPERTY LINES AND
EXISTING RIGHT OF WAY LINES SHOWN ON THIS
PLAN AS OF THIS DATE WERE PERFORMED BY ME
OR UNDER MY DIRECT SUPERVISION.

BY Franklin D. Snyder, Jr.
FRANKLIN D. SNYDER, JR.
SURVEYOR NO. 7468 DATE 02-14-00

RECEIVED _____, 19____
RECORDED _____, 19____
BOOK _____ PAGE _____

COUNTY RECORDER

