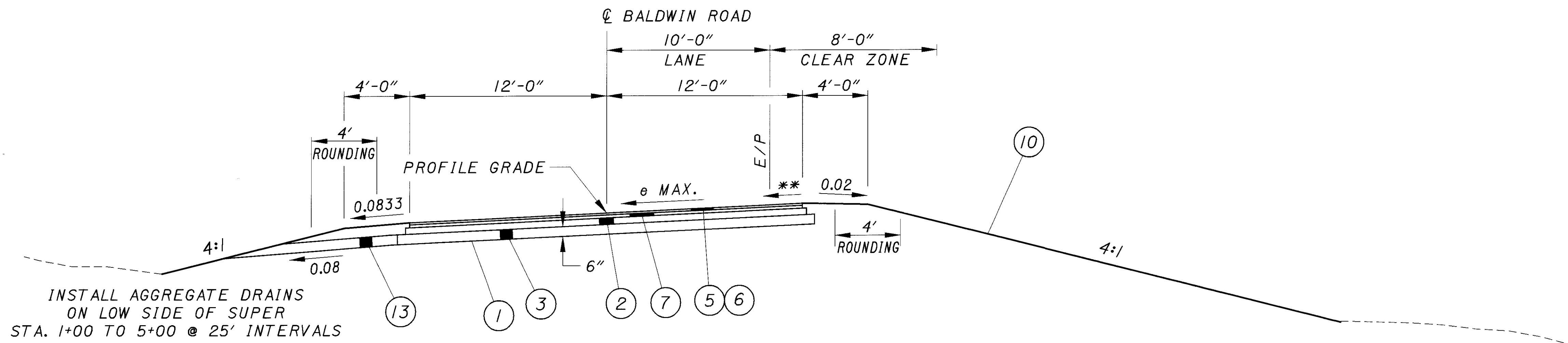


NORMAL SECTION - BALDWIN

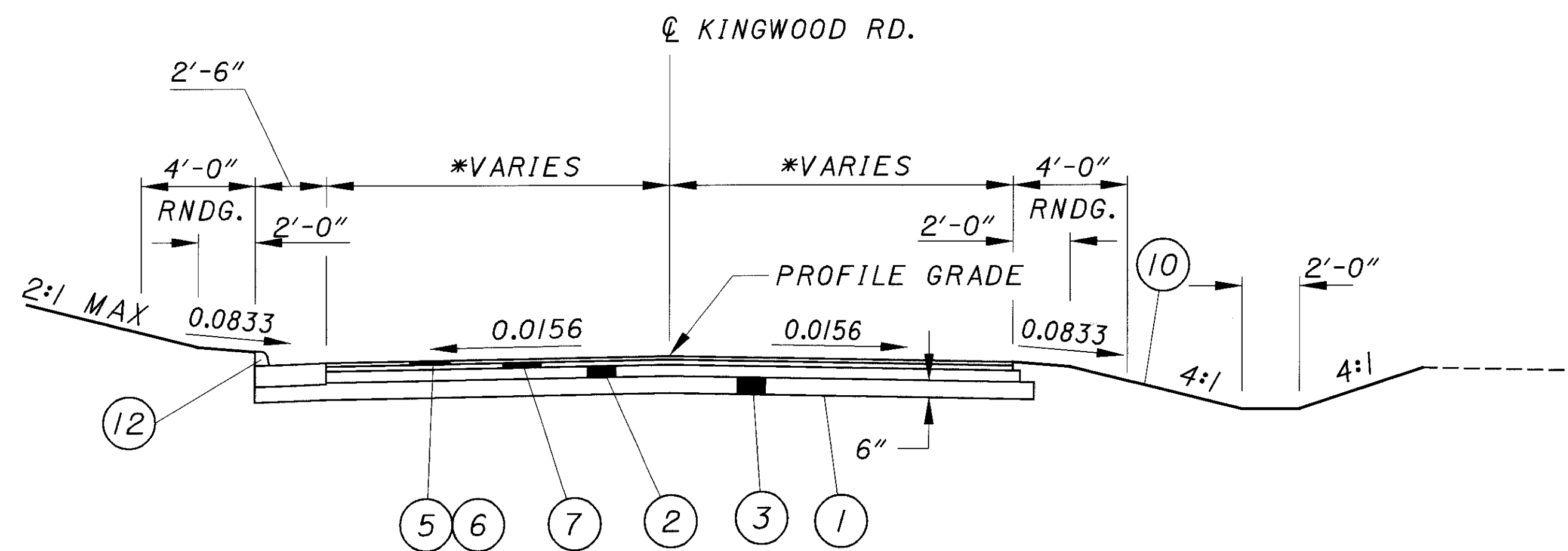
STA. 8+00.00 TO STA. 9+00.00 = 100 LIN. FT.
 *VARIES - 12' TO 9' FROM STA. 8+00 TO STA. 9+00



** - MATCH PAVEMENT CROSS SLOPE

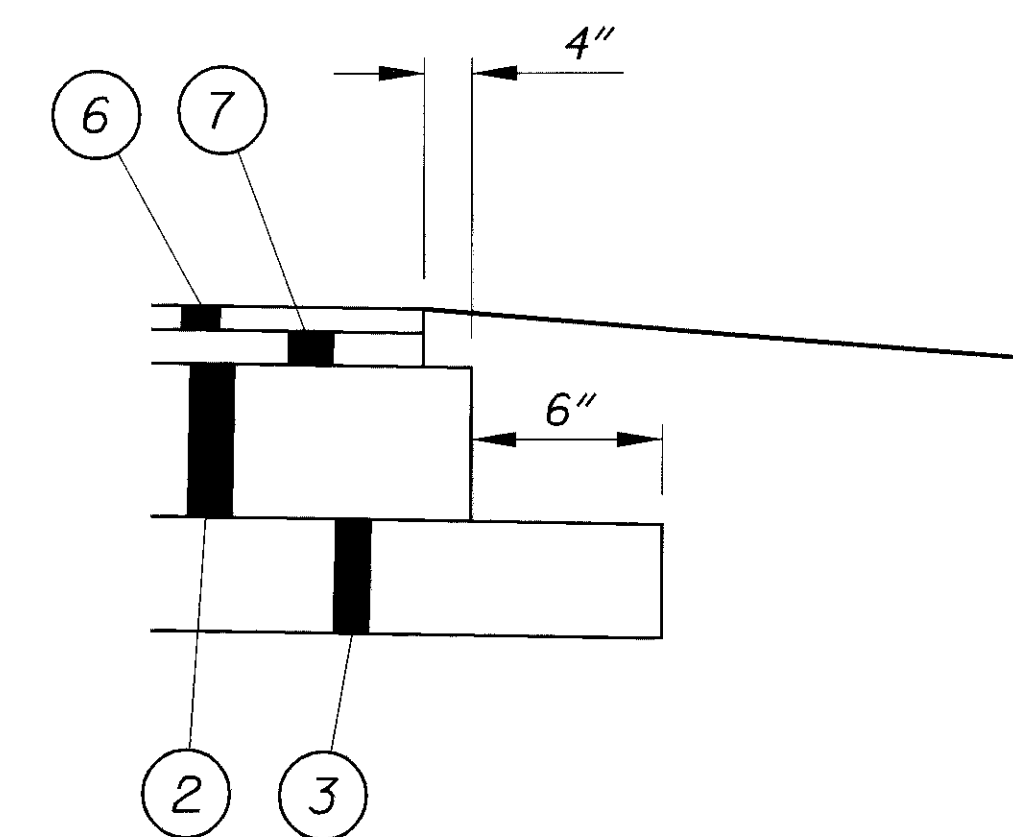
SUPERELEVATED SECTION - BALDWIN

STA. 0+14.90 TO STA. 2+74.46 = 259.56 LIN. FT. (e MAX=0.04)
 MIRROR IMAGE STA. 2+74.46 TO STA. 8+00.00 = 525.54 LIN. FT. (e MAX=0.054)
 TOTAL = 785.10 LIN. FT.



NORMAL SECTION - KINGWOOD

STA. 7+90.00 TO STA. 9+37.46 = 147.46 LIN. FT.
 *VARIES - ±11' TO 12' FROM STA. 7+90.00 TO STA. 8+94.65



PAVEMENT EDGE DETAIL

CHILLICOTHE, BALDWIN AND KINGWOOD

i:\PROJECTS\12790\dgn\12790gyb.dgn 06-NOV-2000 10:52AM jgrmovse