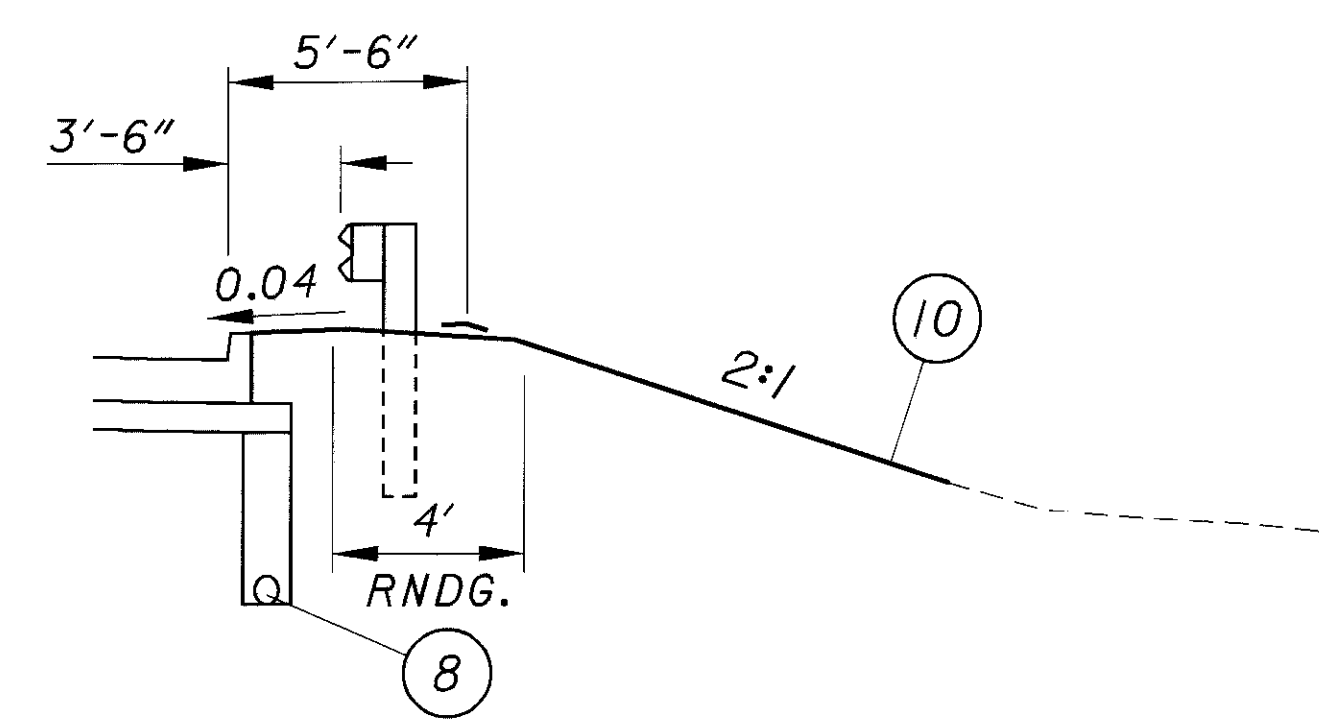
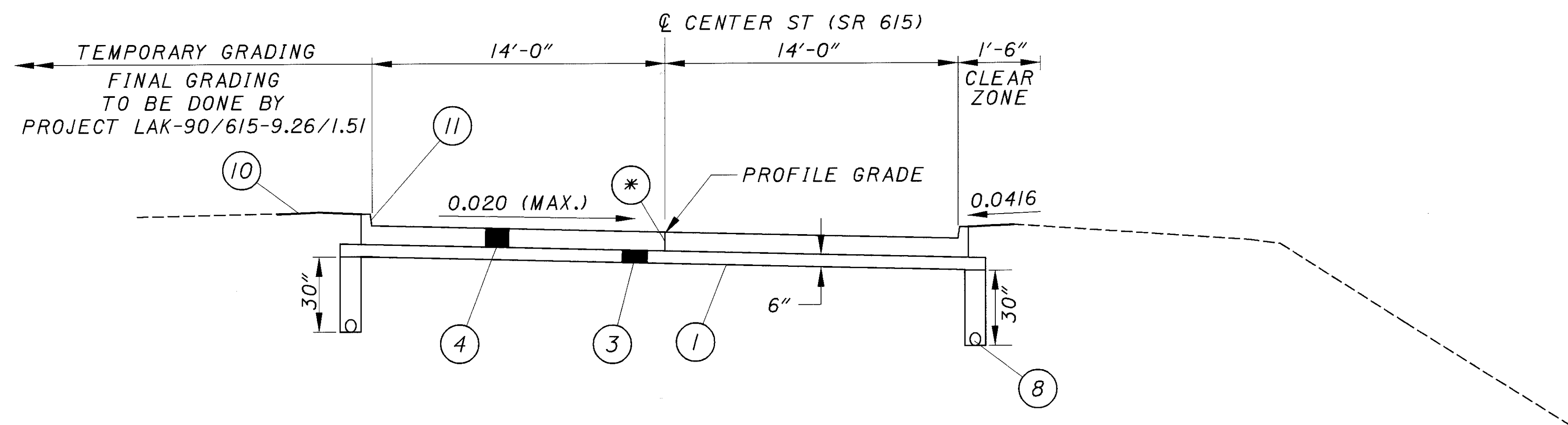


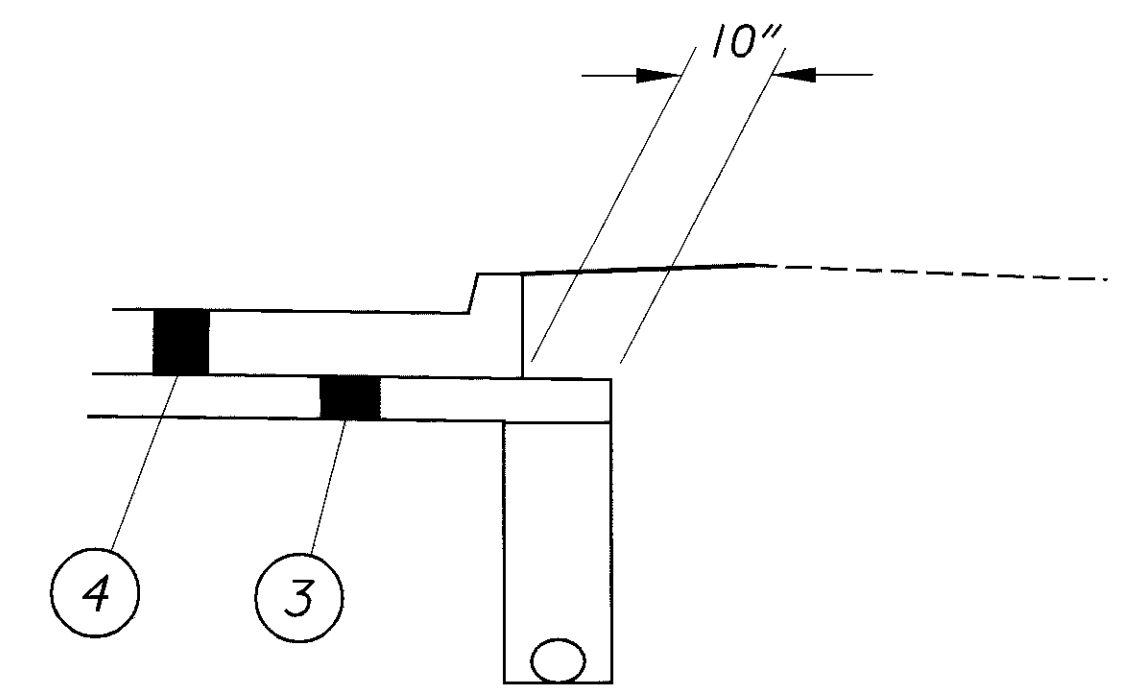
**NORMAL SECTION - SR 615 (CENTER)**  
 STA. 5+50 TO STA. 10+50 = 500 LIN. FT.



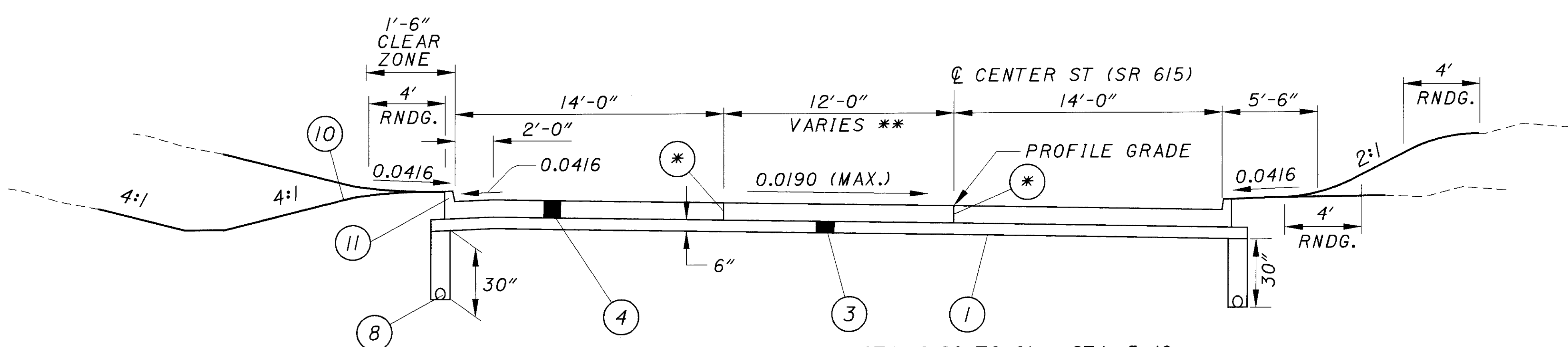
**GUARDRAIL SECTION - CENTER ST**  
 STA. 6+00 TO STA. 8+25



**SUPERELEVATED SECTION - SR 615 (CENTER)**  
 STA. 10+50 TO STA. 11+75 = 125 LIN. FT.



**PAVEMENT EDGE DETAIL**  
 CENTER STREET



**WIDENED & SUPERELEVATED SECTION - SR 615 (CENTER)**  
 STA. 1+22.57 TO STA. 5+50 = 427.43 LIN. FT.

\*\* - VARIES 12' @ STA. 2+90 TO 0' @ STA. 5+40

I:\PROJECTS\p1d12790\dgn\12790gyb.dgn 06-NOV-2000 10:51AM jgr:mv:se

TYPICAL SECTIONS

LAK-615-1.26