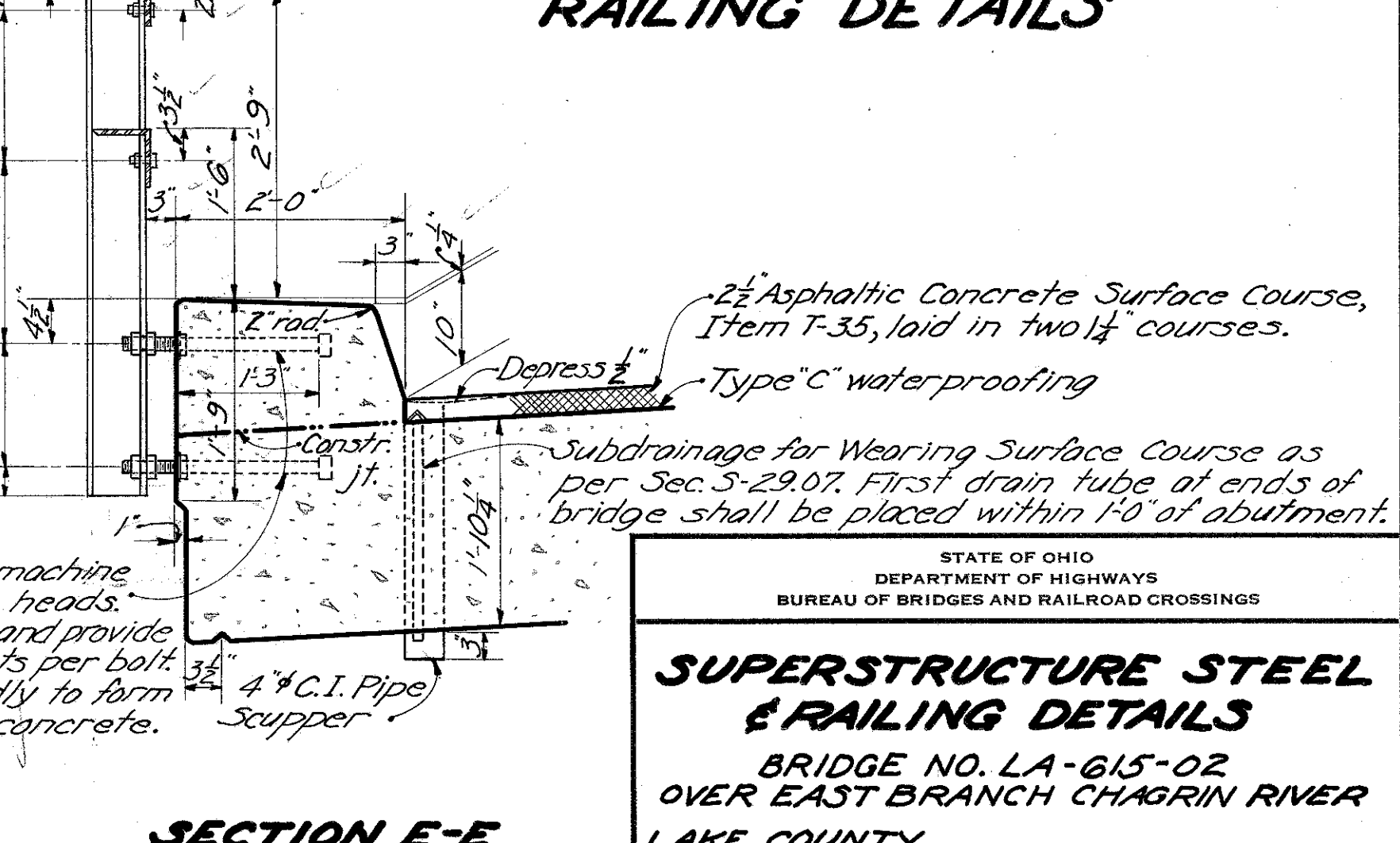
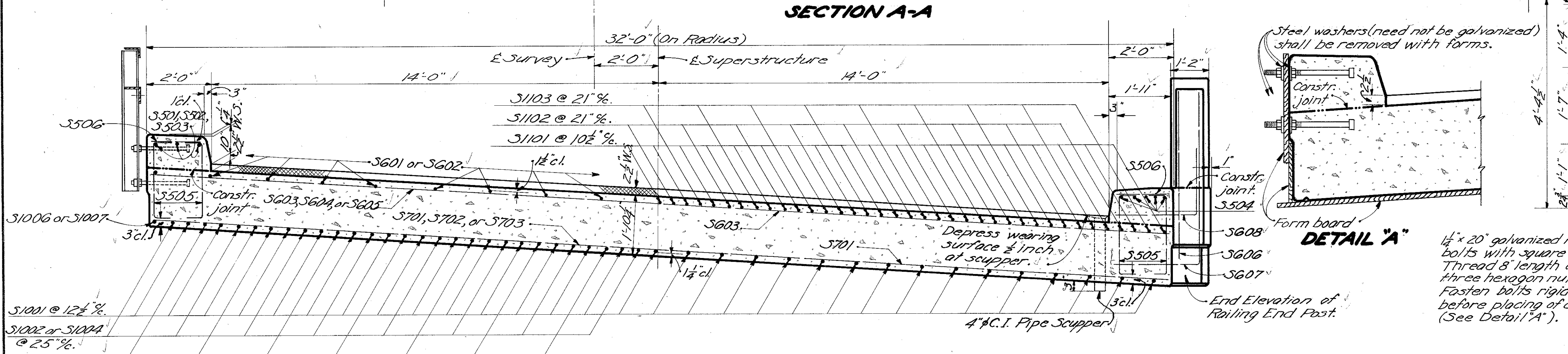
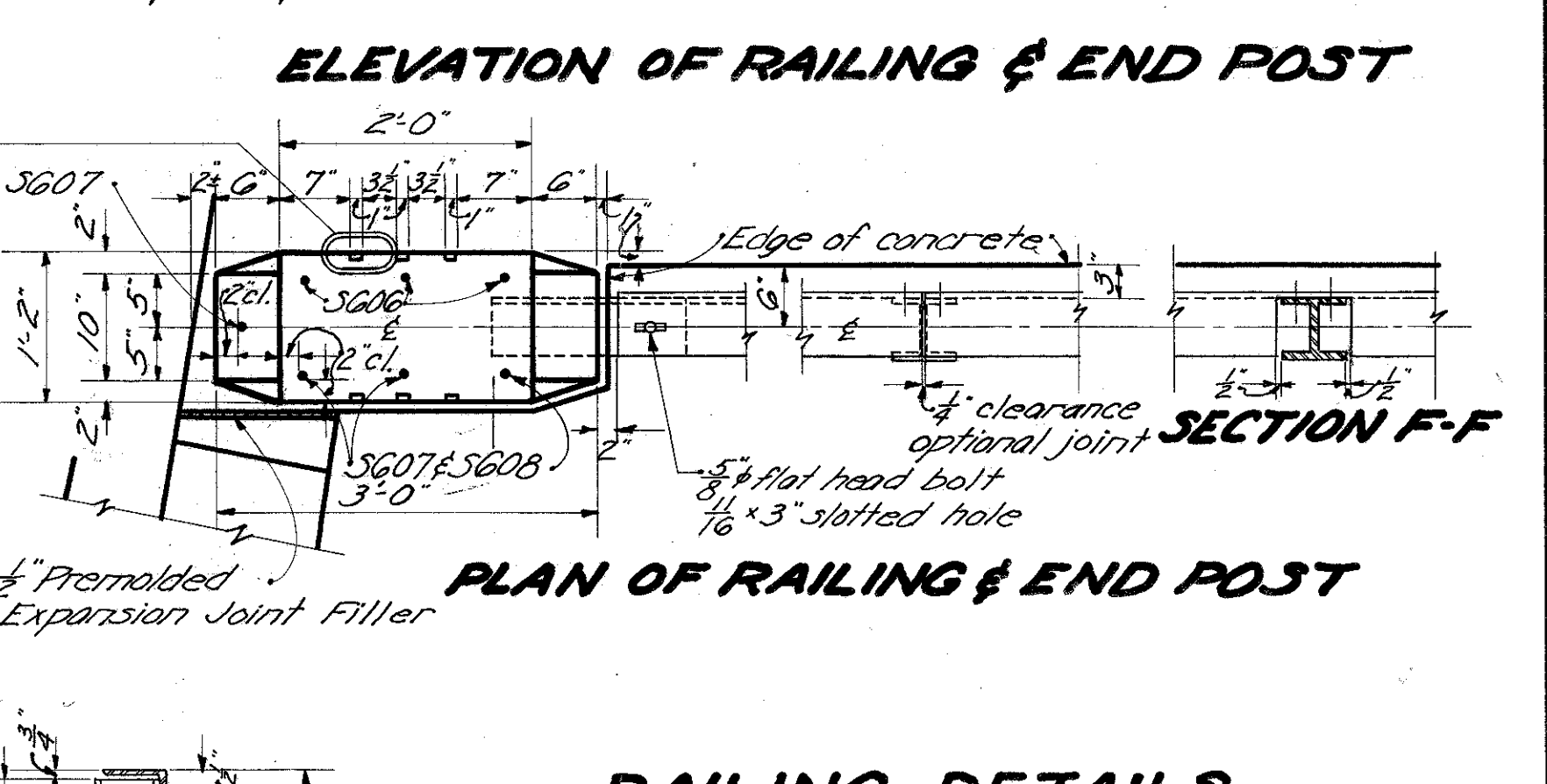
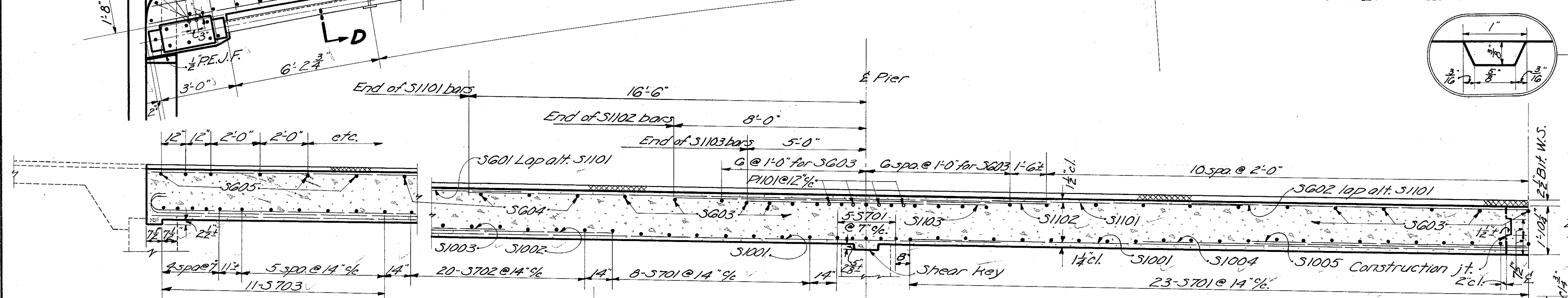
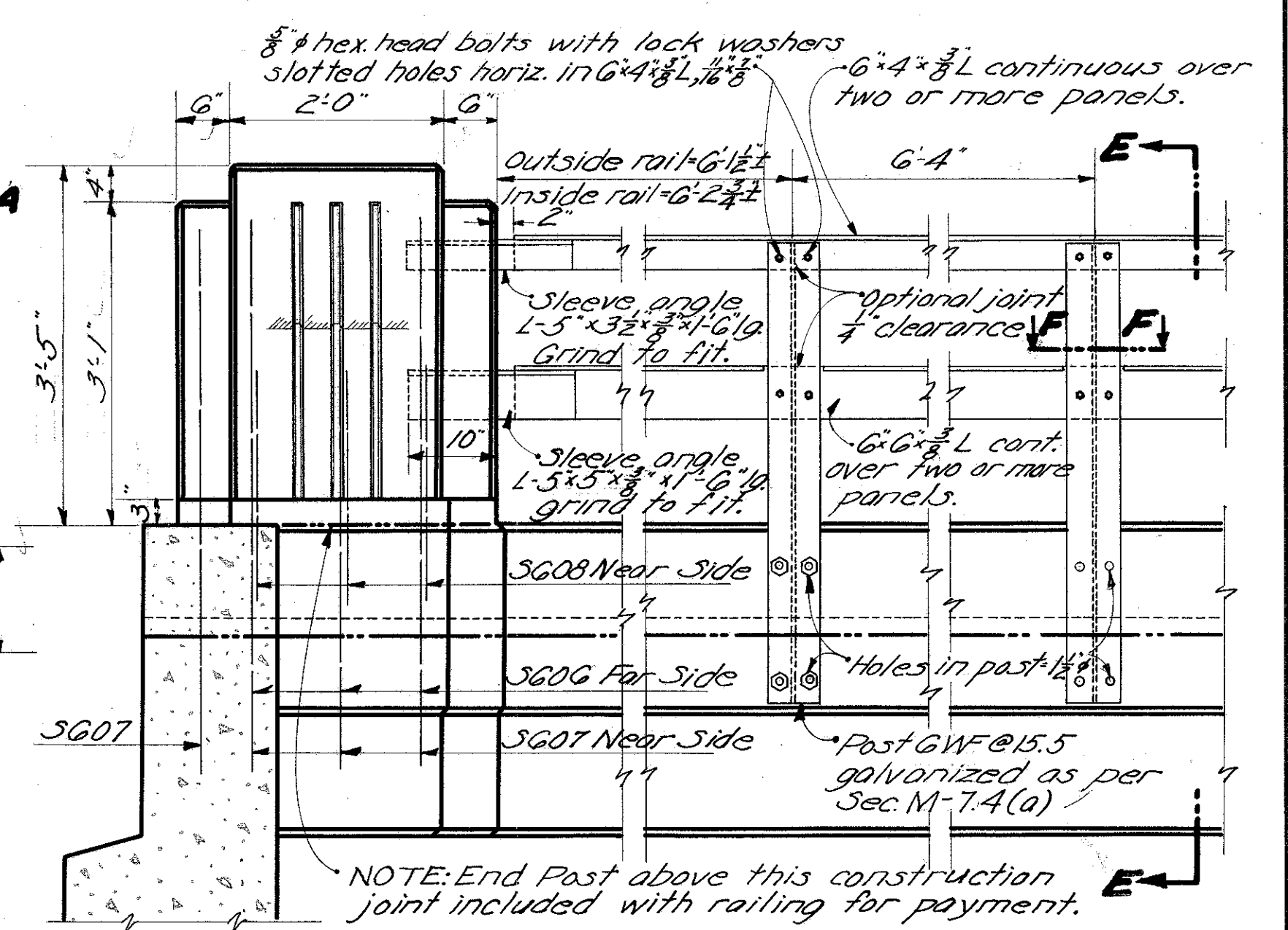
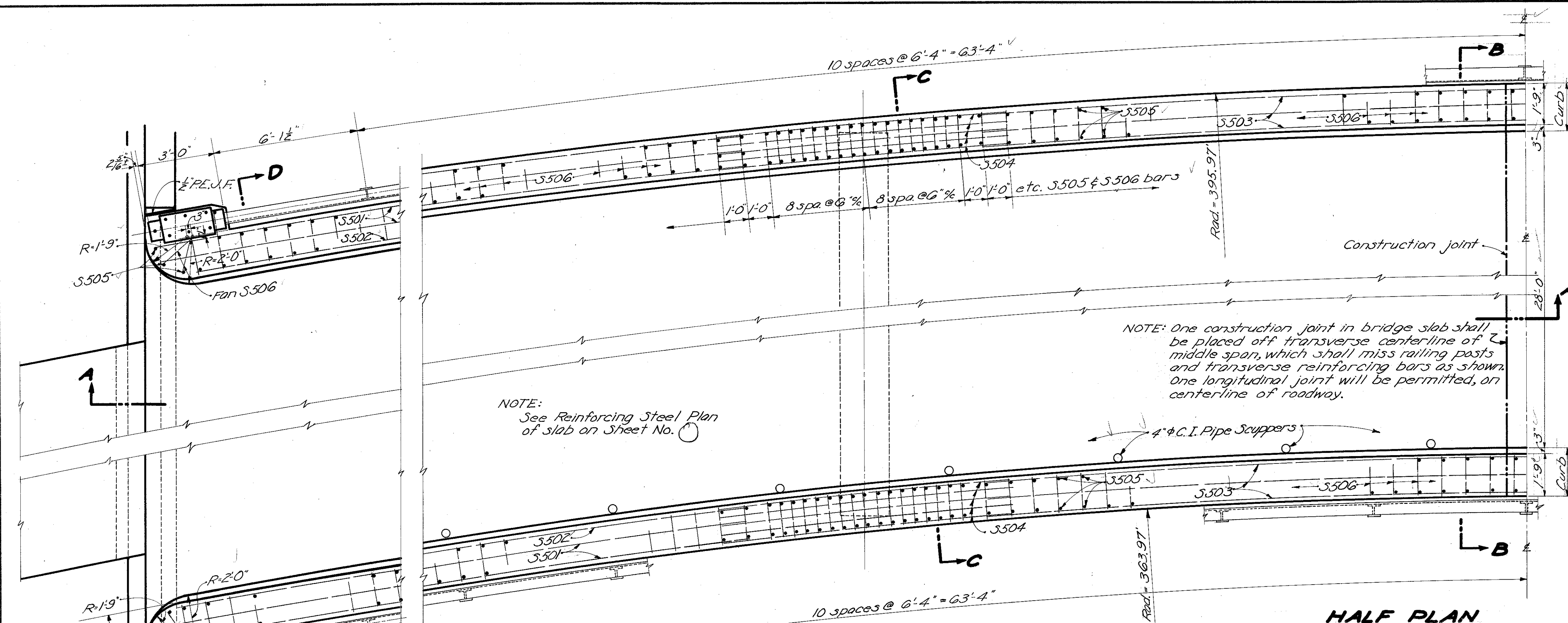


LAK-615-0.06



**SECTION B-B & D-D**      **SECTION C-C**

STATE OF OHIO  
DEPARTMENT OF HIGHWAYS  
BUREAU OF BRIDGES AND RAILROAD CROSSINGS

SUPERSTRUCTURE STEEL  
& RAILING DETAILS

BRIDGE NO. LA-615-02  
OVER EAST BRANCH CHAGRIN RIVER  
LAKE COUNTY  
SEC. LAK-615-0.06 STA. 4+27.50

DESIGNED	DRAWN	TRACED	CHECKED	REVIEWED	DATE	REVISED
J.V.G.	J.V.G.	LA	NEY	BFG	9/23/54	