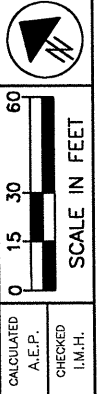


PAVEMENT MARKING LEGEND

- ① ITEM 642 - CENTER LINE, YELLOW, DOUBLE, SOLID
- ② ITEM 642 - EDGE LINE, WHITE
- ③ ITEM 642 - CHANNELIZING LINE
- ④ ITEM 642 - STOP LINE
- ⑤ ITEM 642 - TRANSVERSE LINE
- ⑥ ITEM 642 - LANE ARROW
- ⑦ ITEM 642 - WORD ON PAVEMENT
- ⑧ ITEM 642 - ISLAND MARKING



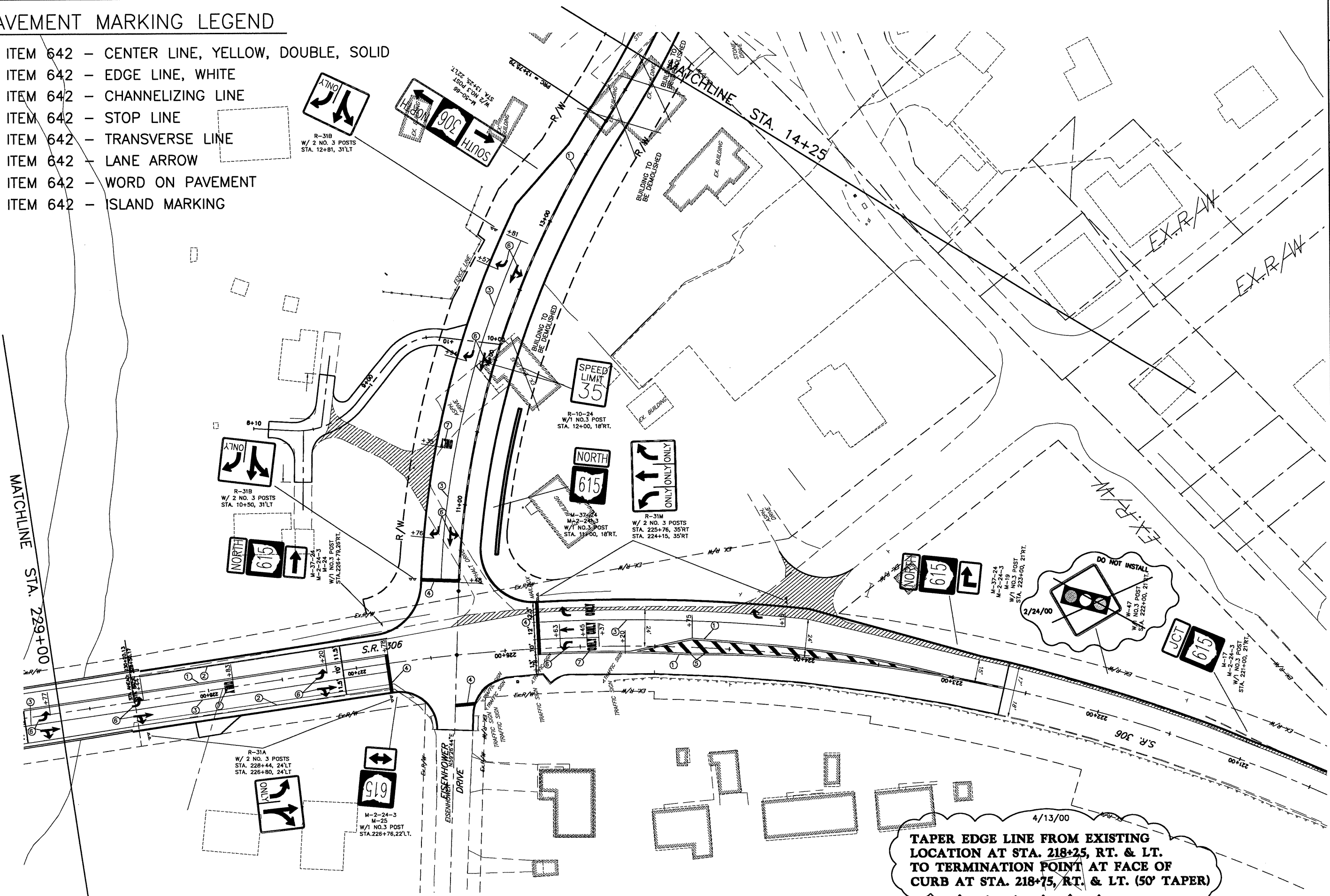
SCALE IN FEET

PAVEMENT MARKING PLAN
S.R. 306 / S.R. 615 INTERSECTION

LAK - 615 - 0.00

T10
T16

DATE: 1-04-00 - TIME: 21:56 - H:\ct\97260\sdsk\97260T05.dwg



4/13/00
TAPER EDGE LINE FROM EXISTING LOCATION AT STA. 218+25, RT. & LT. TO TERMINATION POINT AT FACE OF CURB AT STA. 218+75, RT. & LT. (50' TAPER)