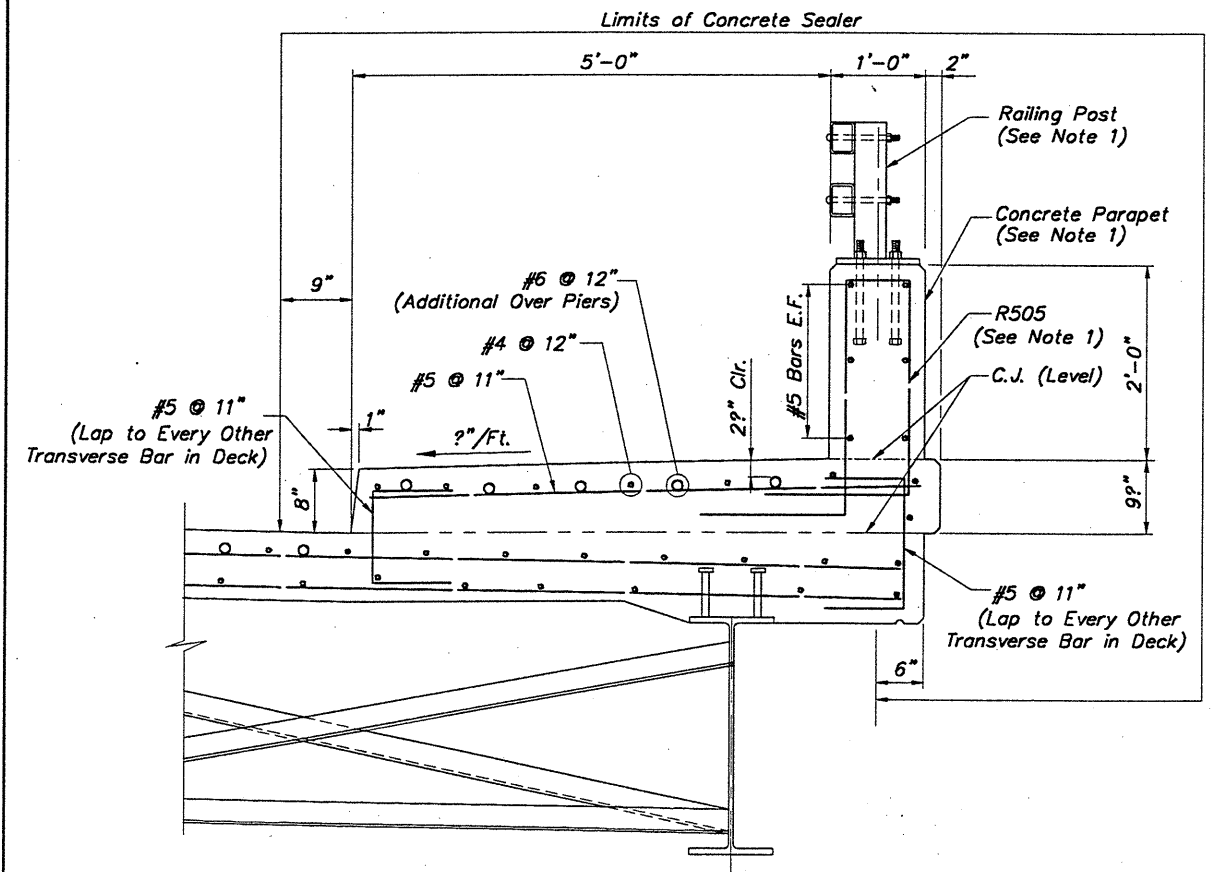
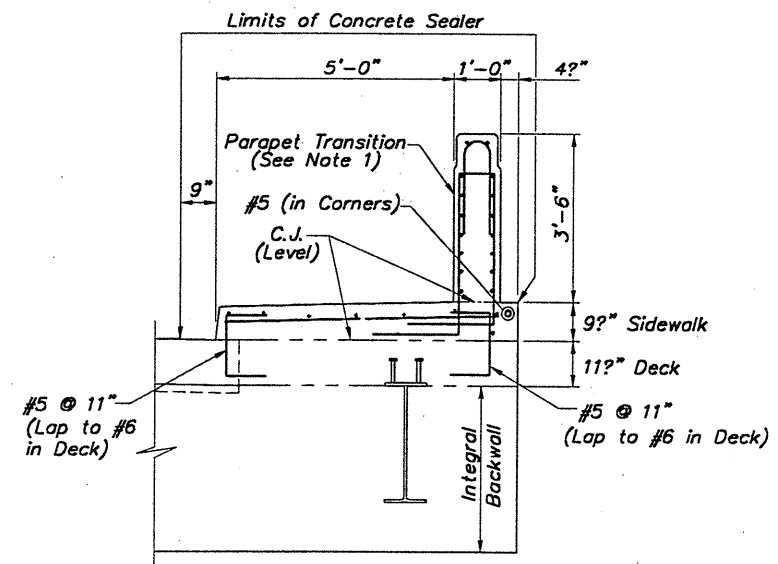


**SIDEWALK AND PARAPET PLAN**  
 (Showing Reinforcing Bars Above Construction Joint)  
 Left Sidewalk Shown, Right Sidewalk Opposite Hand.



**SECTION A-A**  
 Typical Sidewalk Section



**SECTION B-B**  
 Sidewalk Section Over Integral Backwall.

Note: Deck and Integral Backwall Reinforcing Bars are Not Shown. See Section A-A for Additional Information.

**Notes:**

1. For Parapet Transition Detail (Including Hole Layout for Terminal Assembly Bolts), See "Bridge Sidewalk Railing With Approach Railing" on ODOT Std. Dwg. BR-2-98, Sheet 2 of 3.  
 For Additional Railing With Concrete Parapets Details and Notes, See ODOT Std. Dwg. BR-2-98, Sheets 1 and 3 of 3.
2. Parapet Control Joints Shall be Saw Cut and Sealed Following the Requirements in the Plan Note on BR-2-98, Sheet 3 of 3. Vertical Reinforcing Bars Shall be Field Adjusted to Clear These Joints by 3" Minimum.
3. For Bridge Transverse Section, See Sheet 14/19.
4. For Deck Slab Reinforcing Plan, See Sheet 15/19.
5. For Abutment Integral Backwall Plan and Elevations, See Sheet 12/19.
6. Notation: Clr.-Clear; Brg.-Bearing; Typ.-Typical; E.F.-Each Face; Min.-Minimum; C.J.-Construction Joint.

H:\CT\97260\CAD\97260B19.DWG PLOT SCALE 1:24