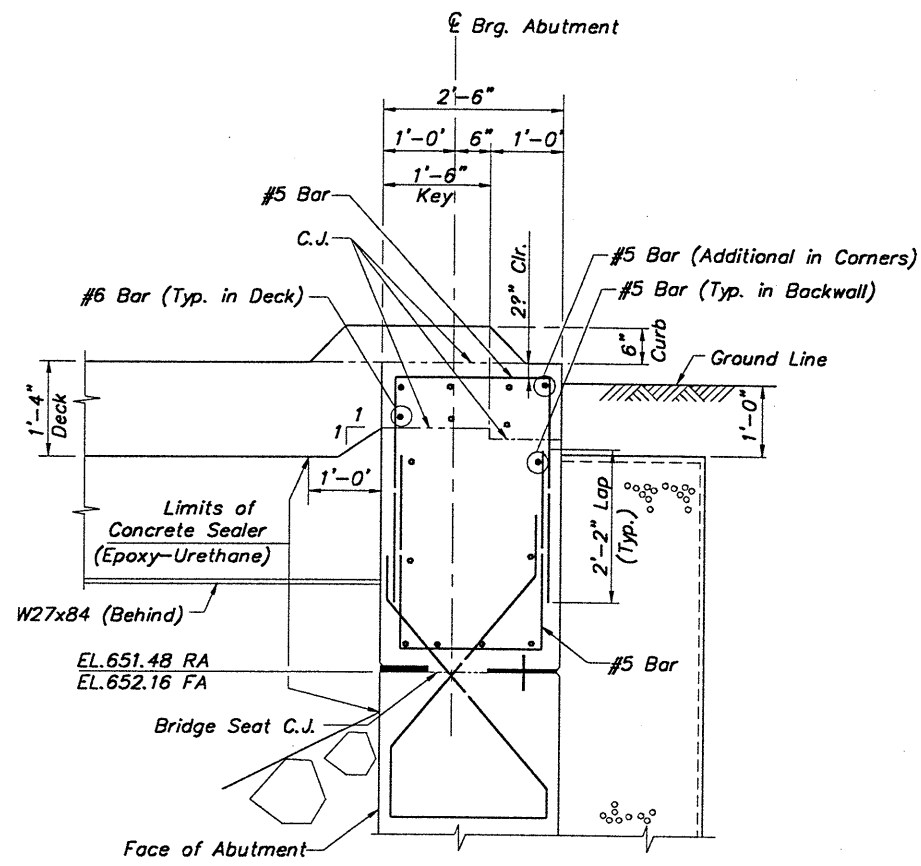


* - For Additional Information, See Section K-K on Sheet 7/16.
 ** - Lap Varies (2'-2" Min.) E.F.

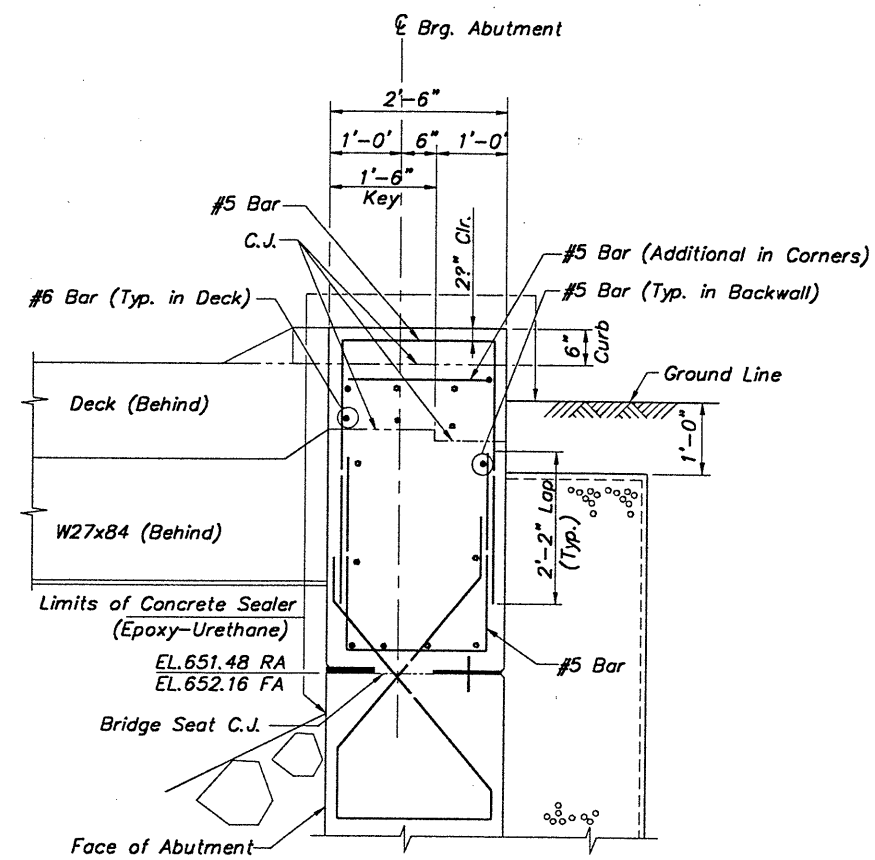
SECTION A-A

	DIMENSION "A"					
	BEAM 1	BEAM 2	BEAM 3	BEAM 4	BEAM 5	BEAM 6
Rear Abutment	12"	14?"	15?"	17?"	19?"	20?"
Forward Abutment	12"	14?"	15?"	14?"	13 "	13?"



SECTION B-B

(For Additional Information, See Section A-A)



SECTION C-C

(For Additional Information, See Section A-A)

NOTES:

1. For Rear Abutment and Forward Abutment Integral Backwall Plan and Elevation, See Sheet 12/16.
2. Include With Item 611-Reinforced Concrete Approach Slab (T=13"), As Per Plan For Payment.
3. For Deck Reinforcing Plan, See Sheet 15/16.
4. Two Separate Thicknesses of Clear or Opaque Polyethylene Film, 705.06, Shall be Placed on the Prepared Subbase and Where the Approach Slab is to be Constructed. The Polyethylene Films Shall Completely Cover the Full Length and Width of the Subbase Between the Sidewall Forms for the Approach Slab. Overlap Sheet Edges 2'-0" Minimum. Materials, Labor and Installation Shall be Included for With Item 611-Reinforced Concrete Approach Slab (T=13"), As Per Plan for Payment.
5. NOTATION: C.J.-Construction Joint; EL.-Elevation; Typ.-Typical; Clr.-Clear; E.F.-Each Face; RA-Rear Abutment; FA-Forward Abutment; PEJF-Prefomed Expansion Joint Filler; Min.-Minimum; Brg.-Bearing.