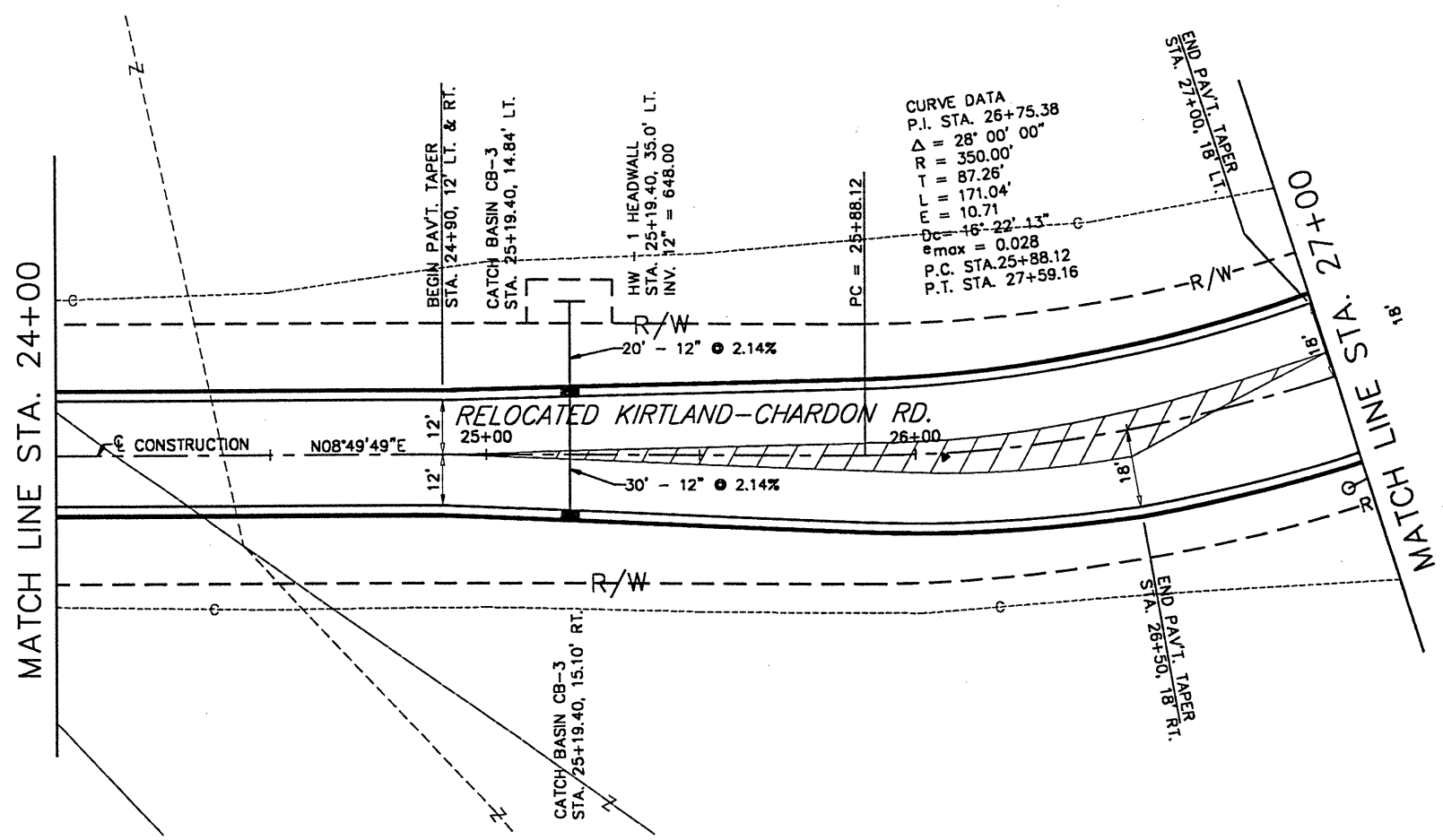
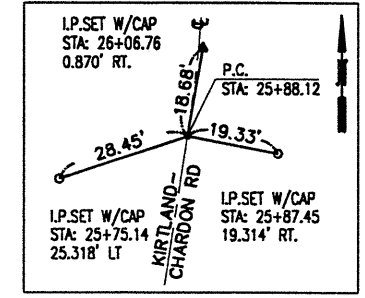


DATE: 10-15-99 - TIME: 08:38 - H:\CT\97260\SDSK\PP5.DWG



BENCHMARK NO. 2
 CHISLED SQ. SET ON CONCRETE
 BASE (SW CORNER) OF O.B.T. BOX
 AT NE CORNER OF GARFIELD ROAD
 AND S.R. 615
 STA: 30+55.68, 45.52' R
 ELEV. = 650.32



	24+00	25+00	26+00	27+00			
	656.38	655.68	655.13	654.76			
665			400.00' VC L.P. ELEV = 654.49 L.P. STA = 25+19.40 PVI STA = 23+42.66 PVI ELEV = 653.33 A.D. = 10.61 K = 37.68			665	
660						660	
655						655	
650						650	
645						645	
640						640	
635						635	
630						630	
	651.4	650.7	650.0	651.1	652.2	652.8	652.2