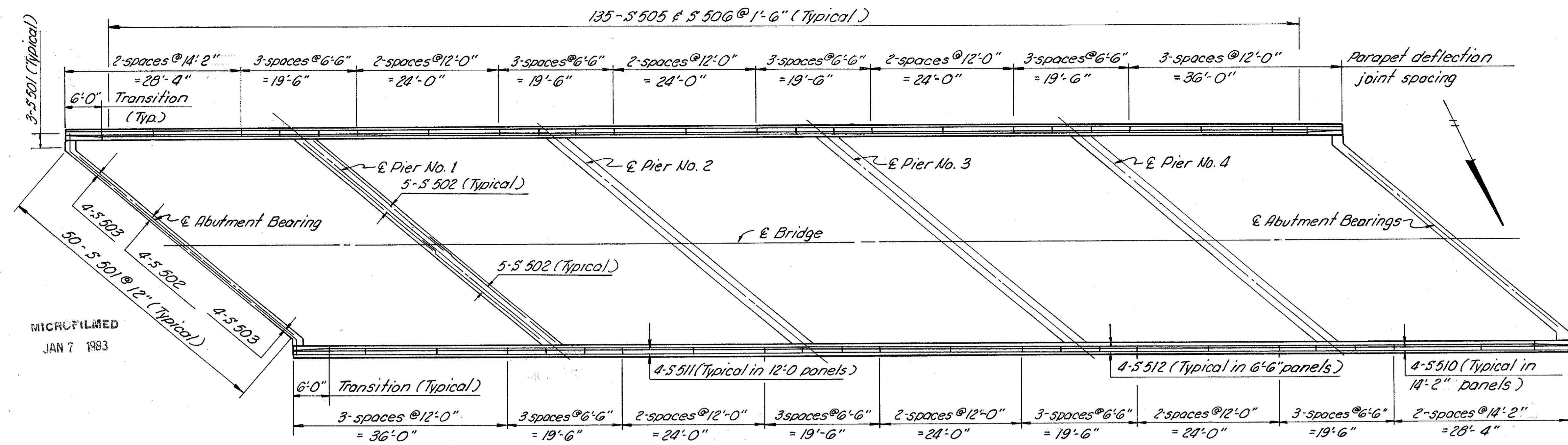
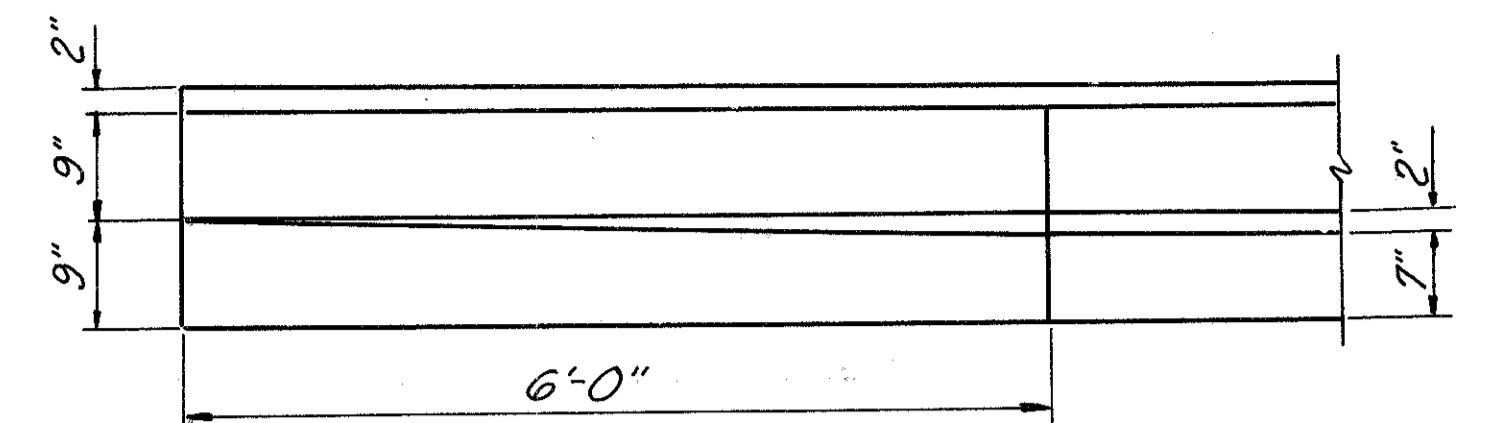


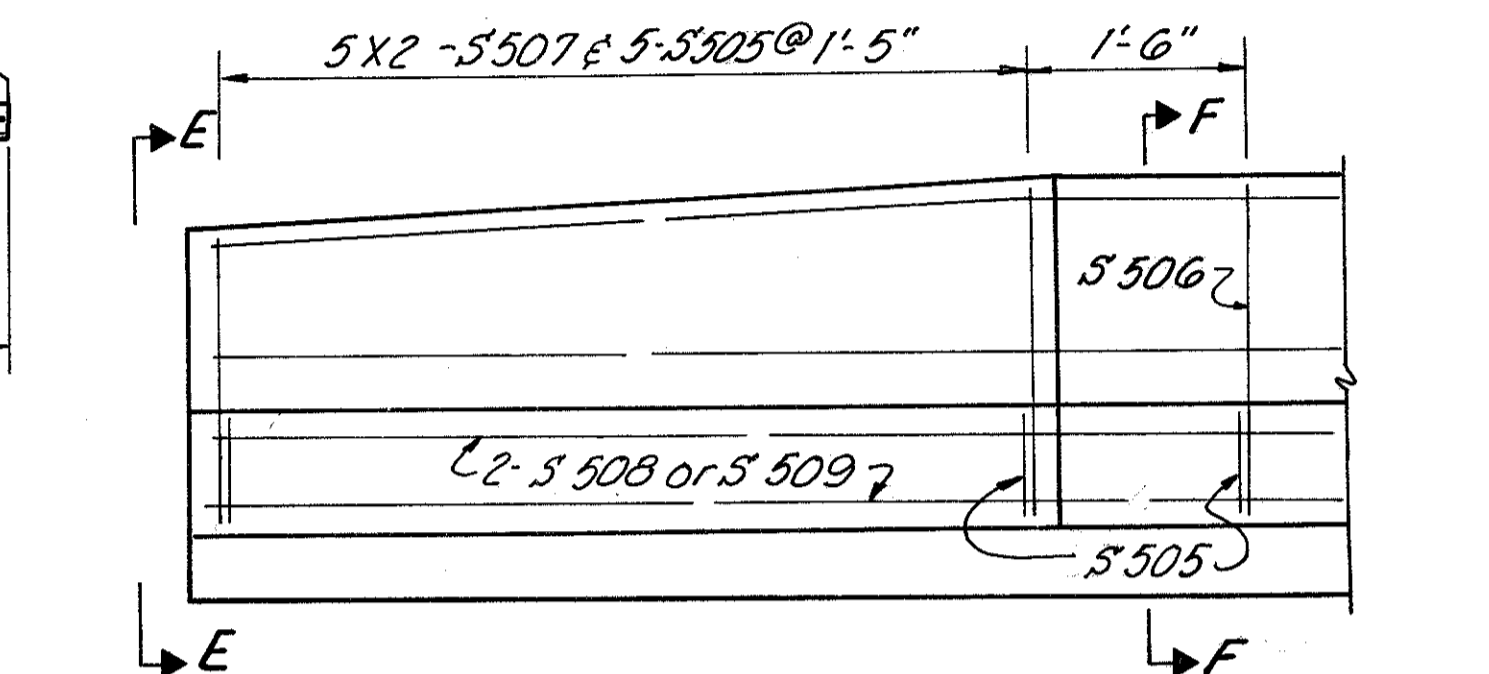
LAKE COUNTY
LAK-608-03.35



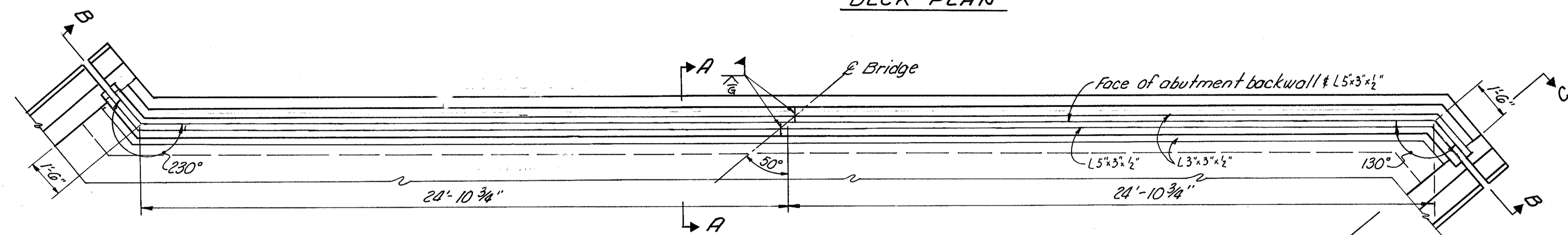
DECK PLAN



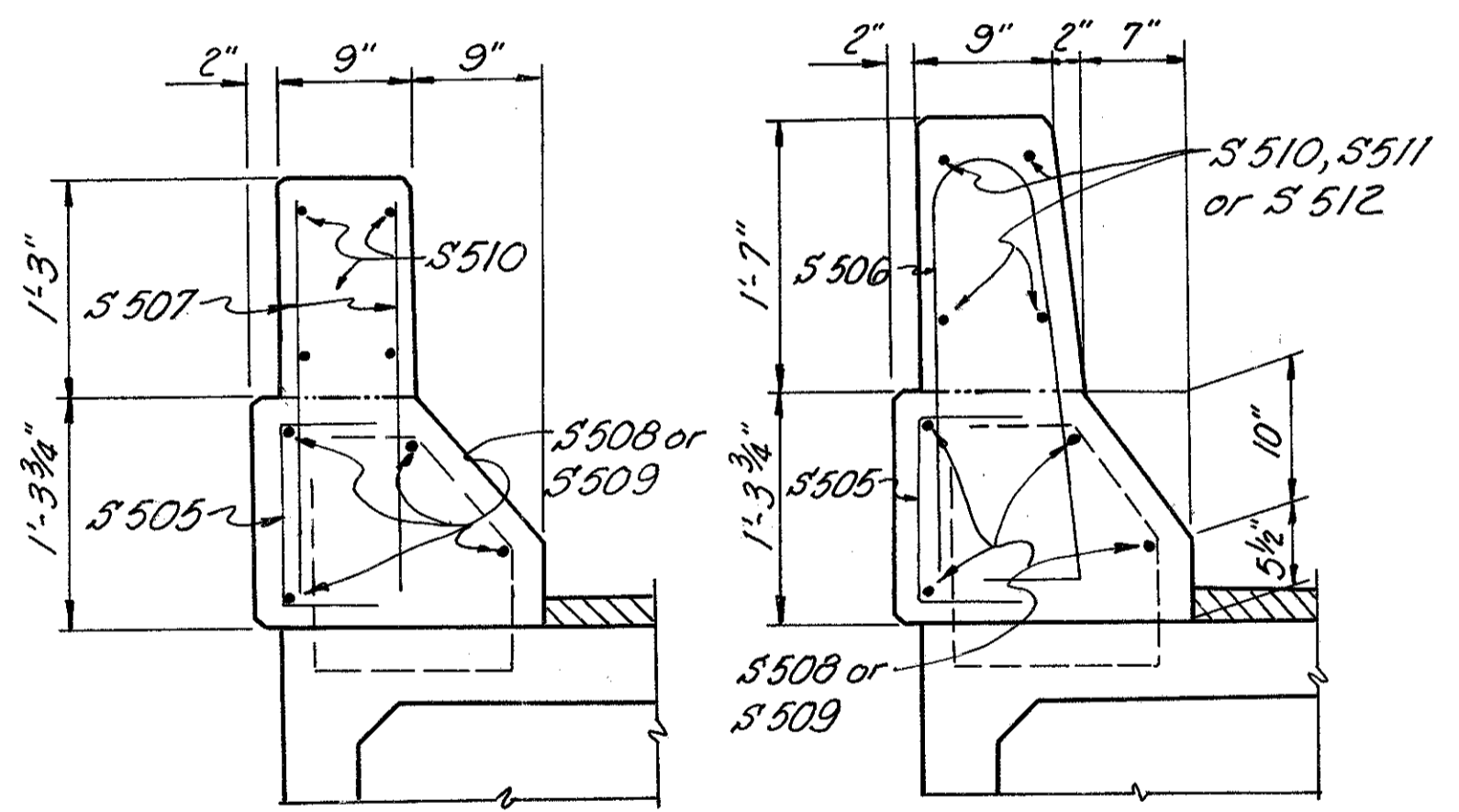
PART PLAN - PARAPET TRANSITION



ELEVATION



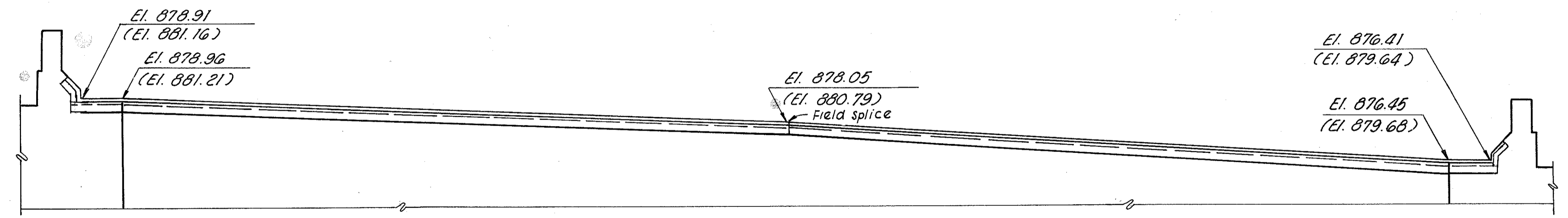
EXPANSION DEVICE PLAN
(At abut. No. 1 shown, at abut. No. 2 similar)



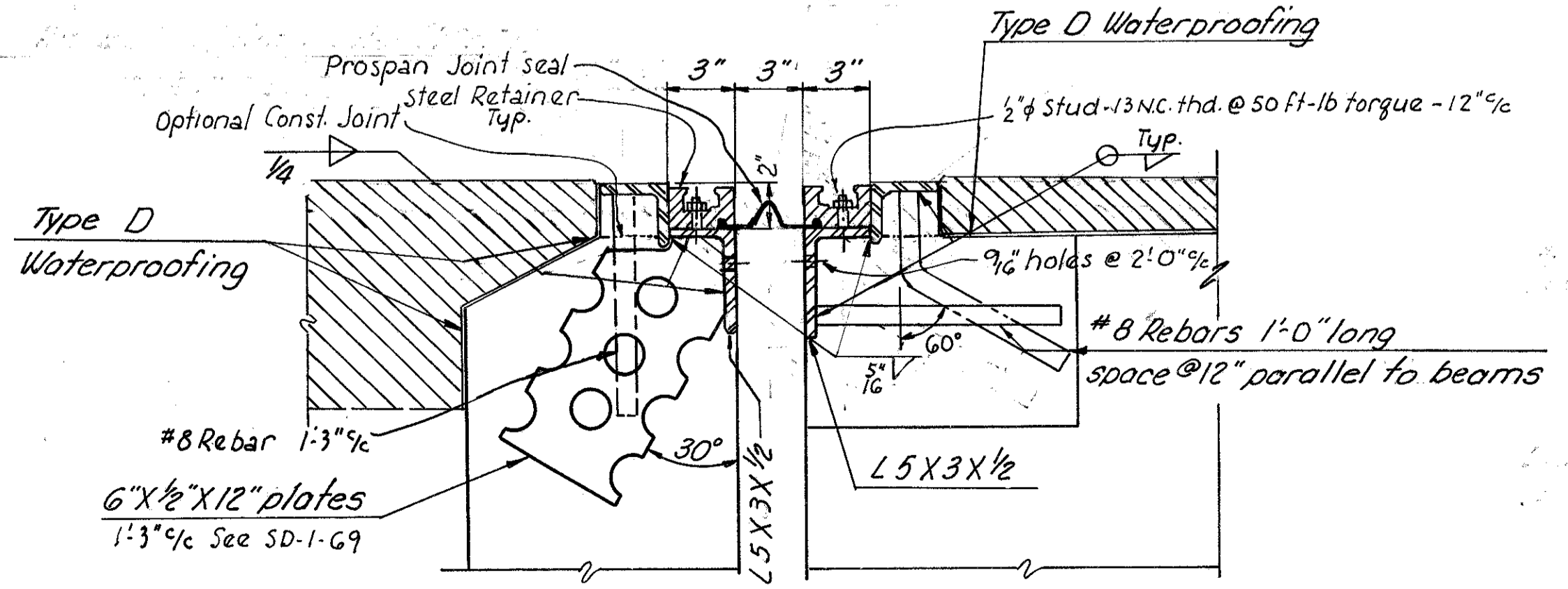
VIEW E-E

SECTION F-F

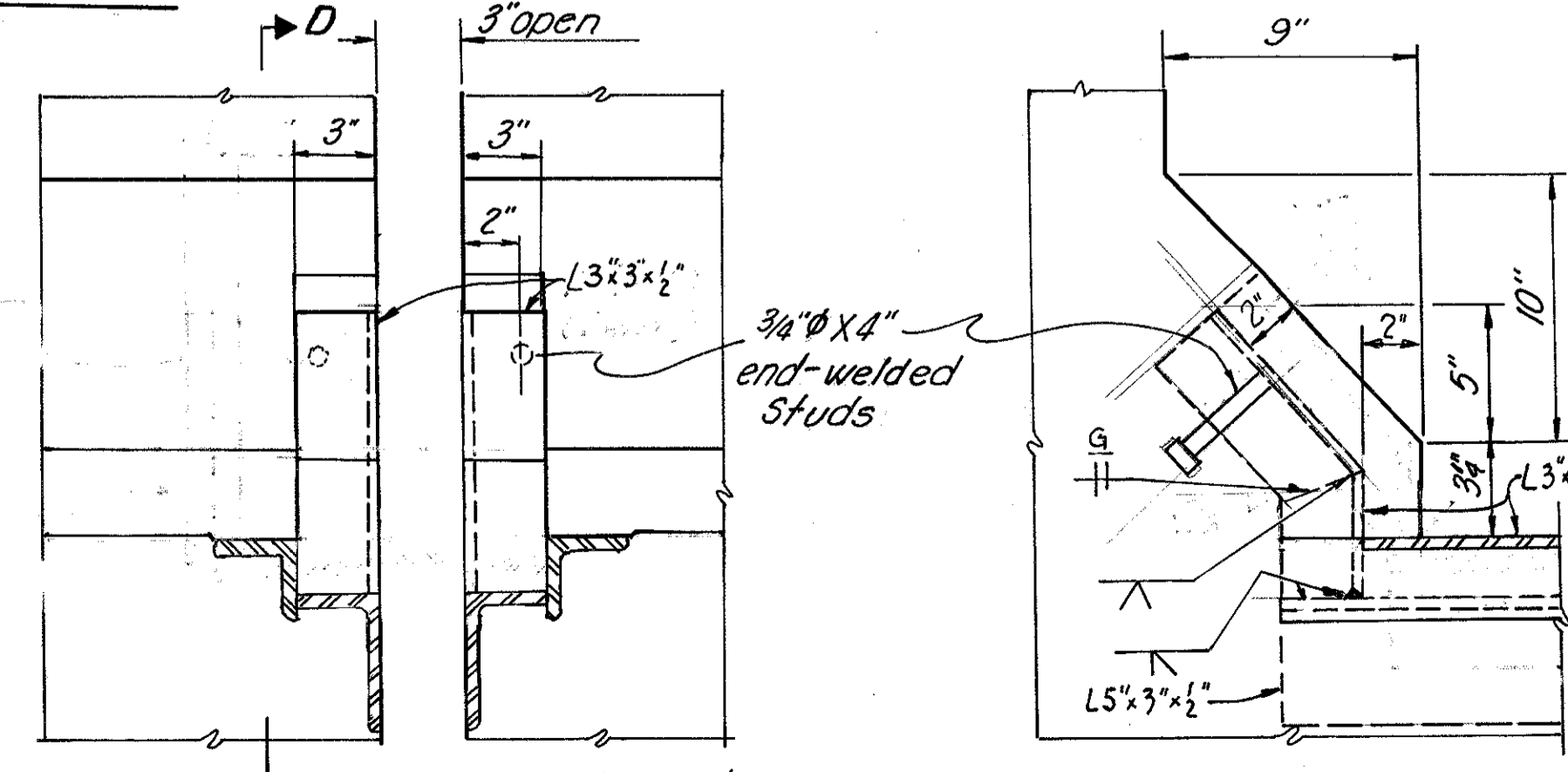
For parapet deflection joint details reference is made to Standard Drawing BR-1-67 Sheet No. 1 of 3



VIEW B-B



SECTION A-A



SECTION C-C

SECTION D-D

~NOTES~

Steel parts of expansion device, anchorage and curb, IS shall be galvanized after anchors have been welded.
Elevations shown in view B-B are top of finished roadway at the face of abutment backwalls.
Elevations shown in brackets are for expansion device at abutment No. 2 only.
Joint seal and retainers as manufactured by Fel-Pro Building Products, Inc., Skokie, Illinois. Installation to be according to manufacturers' recom'ds.
For more details and notes, reference is made to Standard Drawing SD-1-69 sheet 1 of 4.
Due to prestressed box beam with tolerances, expansion device dimensions should be checked in field before steel for expansion device is spliced.

9 / 11	
ERIKSSON ENGINEERING COLUMBUS OHIO	
SUPERSTRUCTURE DETAILS	
BRIDGE NO LAK-608-0337	
S.R. 608 OVER CHESSIE SYSTEM	
STA. 48+94.09 to	
LAKE CO. STA. 51+12.85	
Designed	Drawn
Checked	Reviewed
Date	Revised
V.K.	J.D. C.E.
	11/14/77

MICROFILMED
JAN 7 1983