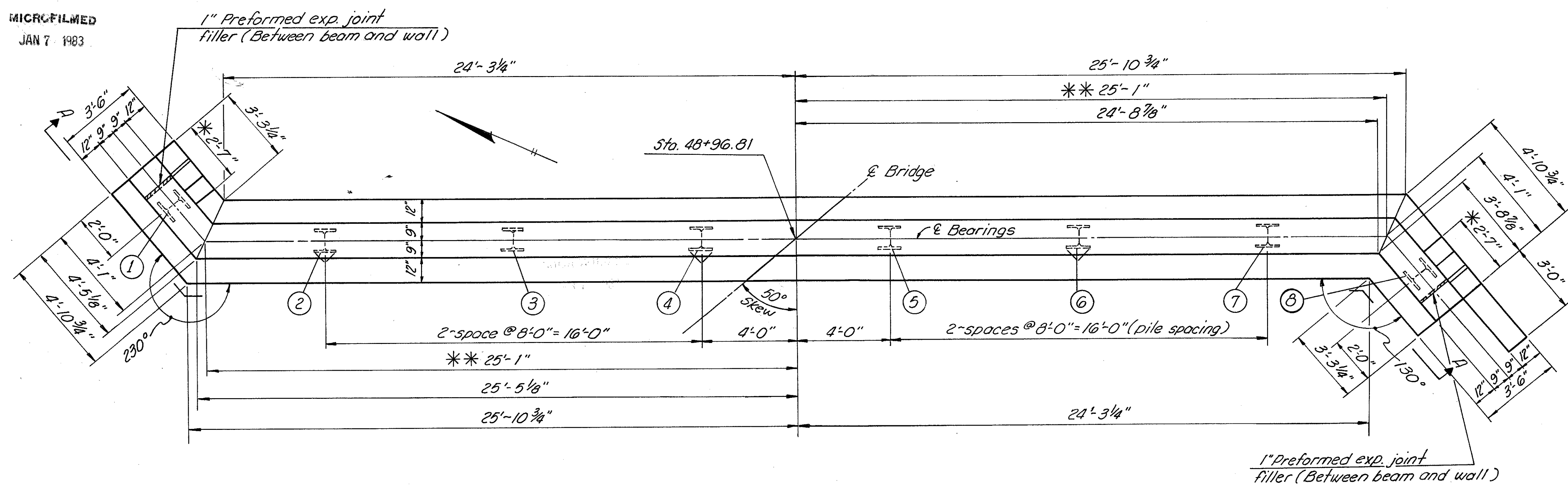


MICROFILMED  
JAN 7 1983

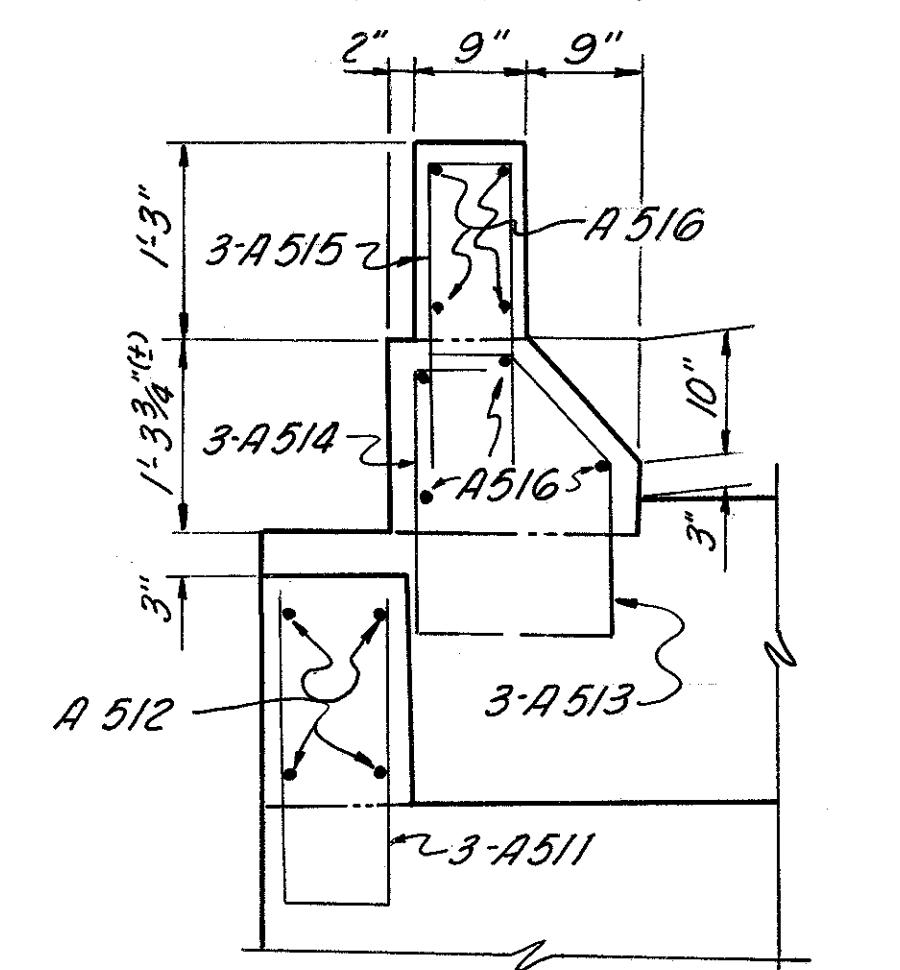
FHWA REGION	STATE	PROJECT	18
5	OHIO		32

LAKE COUNTY  
LAK- 608-03.35

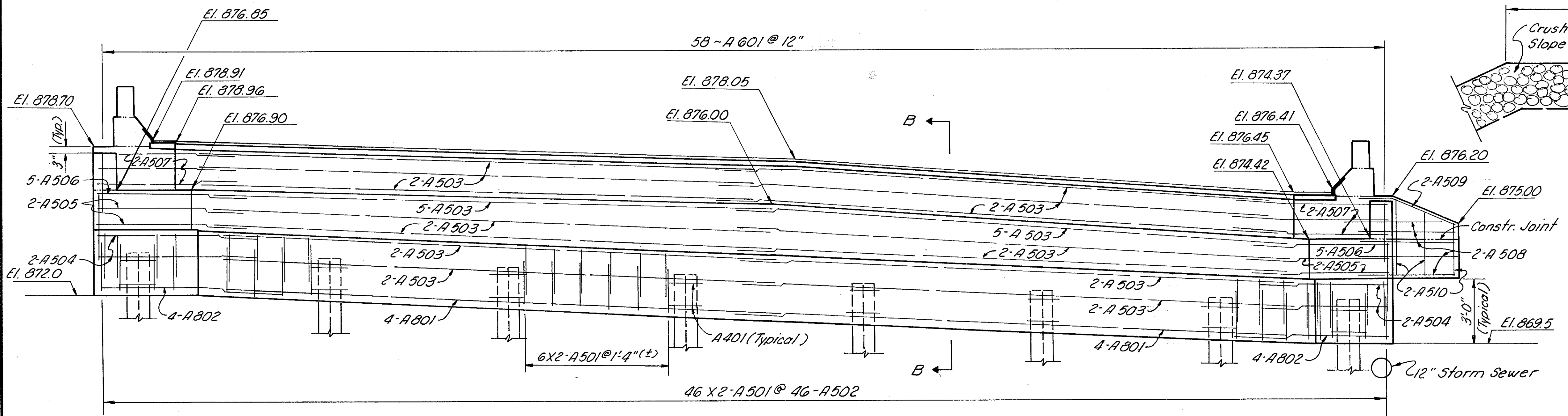


PLAN

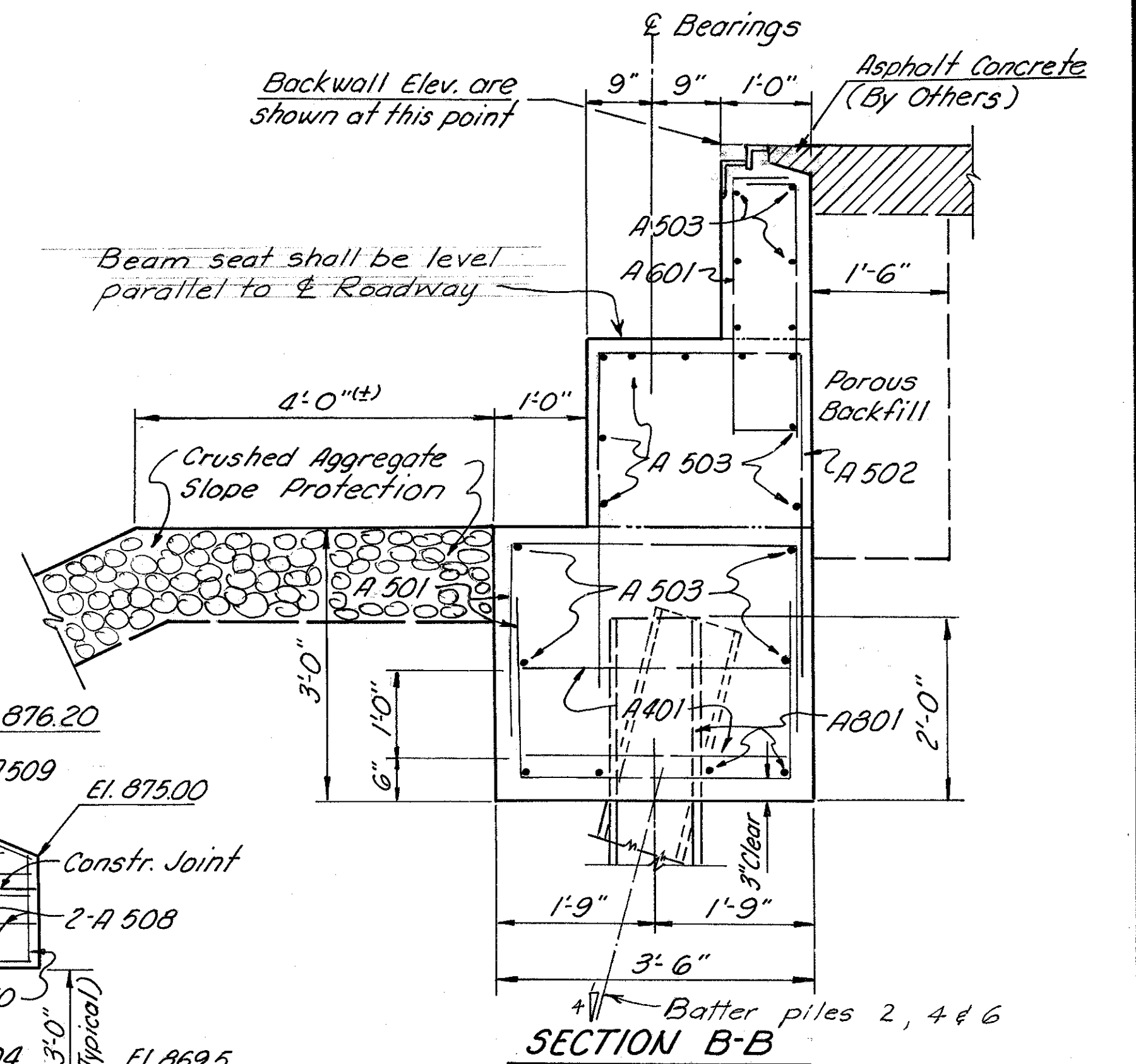
BRIDGE SEAT REINFORCING: Reinforcing steel in the vicinity of the bridge seat shall be accurately placed to avoid interference with the drilling of anchor bar holes.



DEFLECTOR PARAPET DETAIL



VIEW A-A



SECTION B-B

NOTES

- Porous Backfill shall extend upward to the plane of the subgrade and laterally to the surface of the embankment slopes.
- \* Dimension may vary due to prestressed box beam width tolerance, should match curb line on bridge.
- \*\* In dimension added 1/2" for beam with tolerance.
- Reinforcing steel lap splices: No. 5 Bars - 1'-7" Min.  
No. 8 Bars - 2'-6" Min.

<b>ERIKSSON ENGINEERING</b> COLUMBUS OHIO					
<b>ABUTMENT NO 1</b>					
BRIDGE NO LAK 608-0337					
S.R. 608 OVER CHESSIE SYSTEM					
LAKE CO. STA. 48+94.09 to STA. 51+12.85					
Designed	Drawn	Checked	Reviewed	Date	Revised
V.K.	J.D.	C.E.	<i>[Signature]</i>	11/14/77	

3 / 11