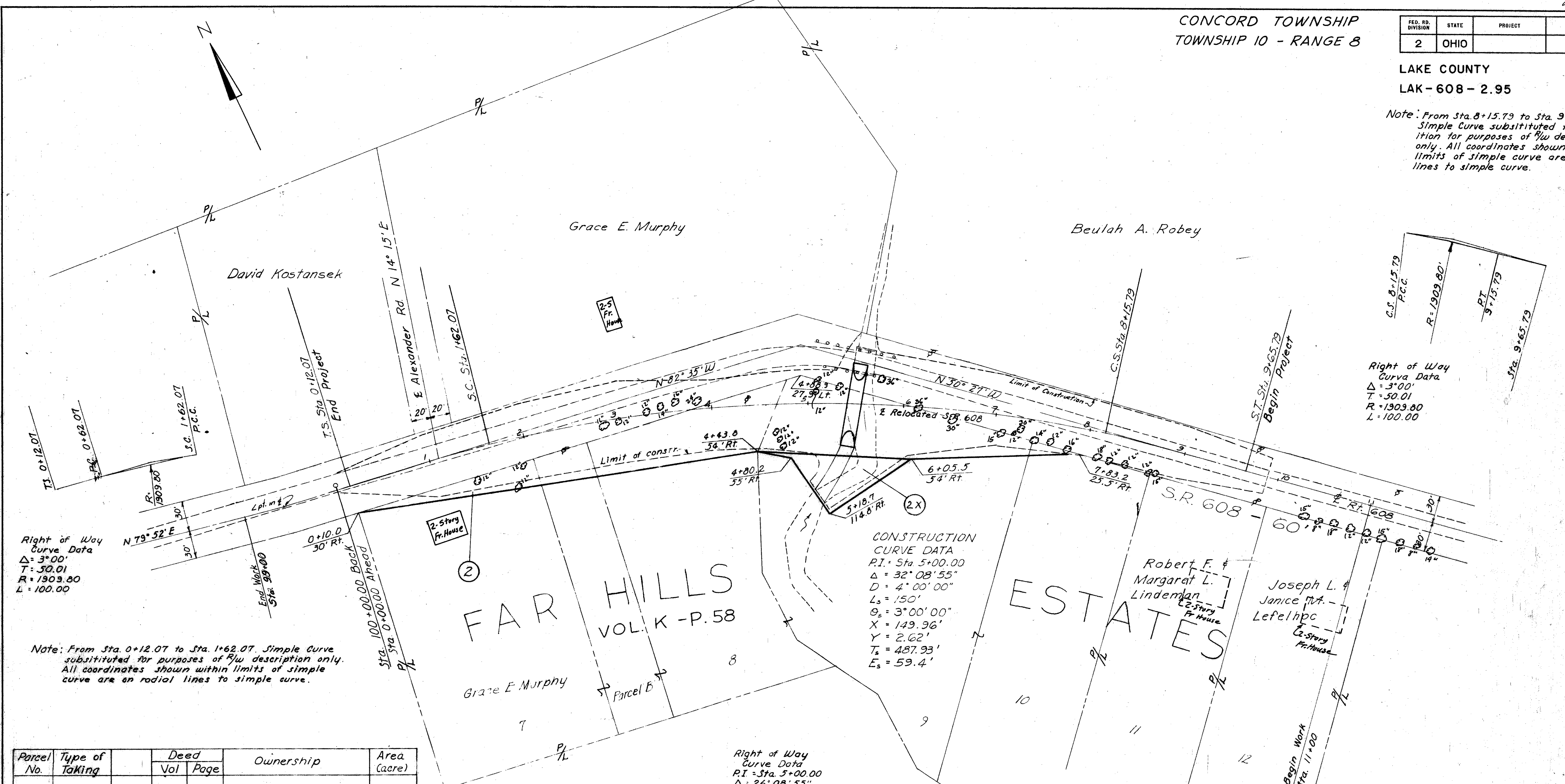


CONCORD TOWNSHIP
TOWNSHIP 10 - RANGE 8

FED. RD. DIVISION	STATE	PROJECT	10 10
2	OHIO		

LAKE COUNTY
LAK-608-2.95

Note: From Sta. 8+15.79 to Sta. 9+65.79.
Simple Curve substituted for transition for purposes of $\frac{1}{2}$ description only. All coordinates shown within limits of simple curve are on radial lines to simple curve.



Right of Way Curve Data
 $\Delta = 3^{\circ}00'$
 $T = 50.01$
 $R = 1903.80$
 $L = 100.00$

Note: From Sta. 0+12.07 to Sta. 1+62.07. Simple Curve substituted for purposes of $\frac{1}{2}$ description only. All coordinates shown within limits of simple curve are on radial lines to simple curve.

CONSTRUCTION CURVE DATA
P.I. = Sta 5+00.00
 $\Delta = 32^{\circ}08'55''$
 $D = 4^{\circ}00'00''$
 $L_s = 150'$
 $\theta_s = 3^{\circ}00'00''$
 $X = 149.96'$
 $Y = 2.62'$
 $T_s = 487.93'$
 $E_s = 59.4'$

Right of Way Curve Data
 $\Delta = 3^{\circ}00'$
 $T = 50.01$
 $R = 1903.80$
 $L = 100.00$

Right of Way Curve Data
P.I. = Sta. 5+00.00
 $\Delta = 26^{\circ}08'55''$
 $D = 4^{\circ}00'$
 $L_c = 653.72$

Parcel No.	Type of Taking	Deed		Ownership	Area (acre)
		Vol	Page		
2	Partial	395	563	Grace E. Murphy	0.757±
2X	Partial	395	563	Grace E. Murphy	0.090±

LEGEND
Parcel No.1 - Standard Highway Easement

Date of Revision No.3 1-20-61
Date of Revision No.2 10-20-60
Date of Revision No.1 9-21-60
Date of Completion: 9-16-60
Scale: 1"=50'