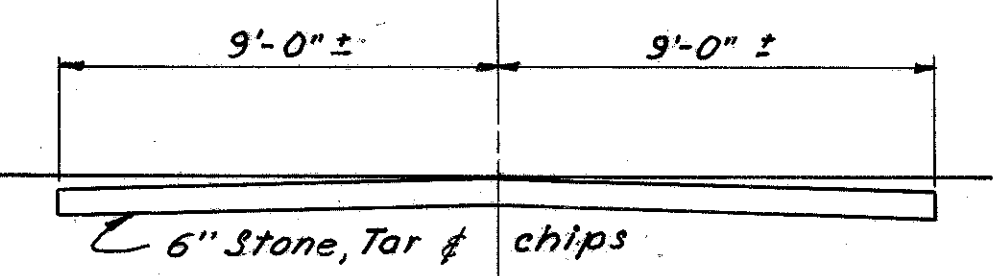
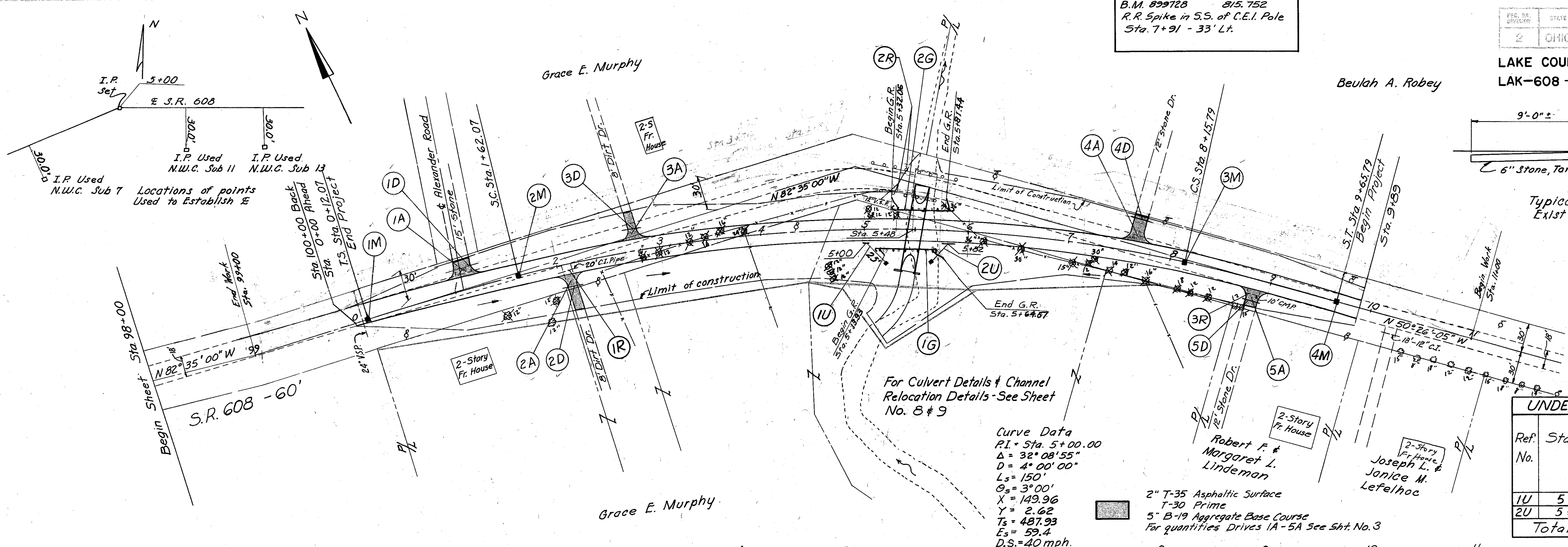


B.M. 899728 815.752  
 R.R. Spike in S.S. of C.E.I. Pole  
 Sta. 7+91 - 33' Lt.

LAKE COUNTY  
 LAK-608 - 2.95



Typical Section  
 Exist Rt. 608 Pav't



Curve Data  
 P.I. = Sta. 5+00.00  
 $\Delta = 32^\circ 08' 55''$   
 $D = 4^\circ 00' 00''$   
 $L_s = 150'$   
 $\theta_s = 3^\circ 00'$   
 $X = 149.96$   
 $Y = 2.62$   
 $T_s = 487.93$   
 $E_s = 59.4$   
 $D.S. = 40 \text{ mph.}$

2" T-35 Asphaltic Surface  
 T-30 Prime  
 5" B-19 Aggregate Base Course  
 For quantities Drives 1A-5A See Sht. No. 3

Ref. No.	Station	I-4 I-5	
		8" Outlet Pipe	45° Bends
		Lin. Ft.	Each
1U	5+00	25	1
2U	5+32	25	1
<b>Totals</b>		<b>50</b>	<b>2</b>

Ref. No.	Station	I-15 Steel Beam Type (Deep)	
		From	To
1G	5+13.93	5+64.57	50
2G	5+32.06	5+81.44	50
<b>Totals</b>			<b>100*</b>

Ref. No.	Station	I-8 Monument Assemblies	
		Each	
1M	0+12.07	1	
2M	1+62.07	1	
3M	8+15.79	1	
4M	9+65.79	1	
<b>Totals</b>		<b>4*</b>	

\*Quantities Carried Directly to General Summary

Ref. No.	Stations	I-1 C.M. Pipe for Driveways	
		From	To
1D	0+96	1+23	32
2D	2+02	2+20	18
3D	2+66	2+84	18
4D	7+54	7+78	24
5D	8+78	8+94	16
<b>Totals</b>			<b>108*</b>

Station	Lt. Edge Elev.	℄ Elev.	Rt. Edge Elev.
0+00	828.02	828.25	828.02
0+25	827.54	827.75	827.50
0+50	827.08	827.25	826.97
0+75	826.65	826.75	826.44
1+00	826.27	826.25	825.91
1+25	825.97	825.75	825.38
1+50	825.63	825.25	824.85

Station	Lt. Edge Elev.	℄ Elev.	Rt. Edge Elev.
8+25	816.27	815.87	815.47
8+50	816.68	816.33	815.97
8+75	817.20	816.90	816.59
9+00	817.82	817.57	817.30
9+25	818.48	818.28	818.06
9+50	819.18	819.03	818.85
9+75	819.94	819.84	819.71

Excavation - 5408 Cu. Yd.  
 Embankment - 2345 Cu. Yd.  
 Seeding - 7188 Sq. Yd.