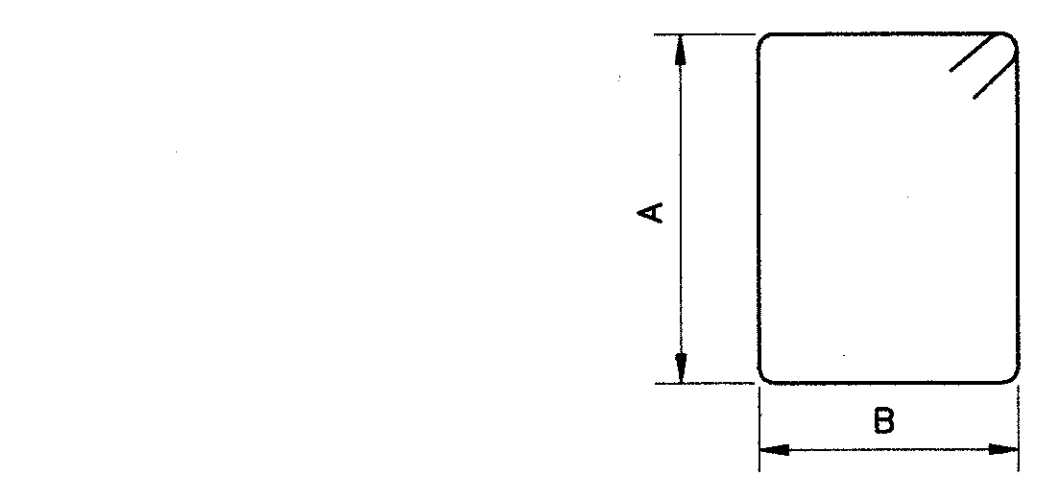
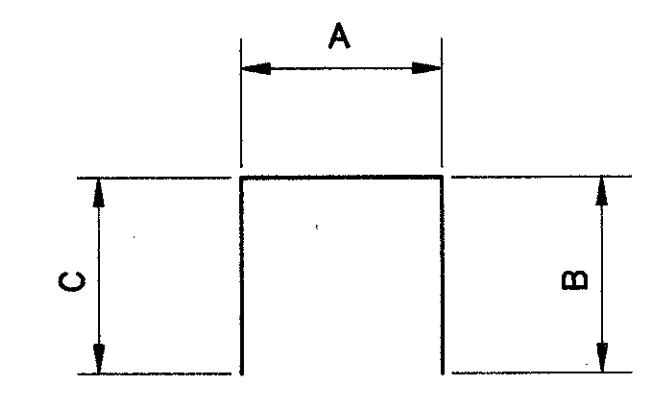


## REINFORCING STEEL BAR SCHEDULE

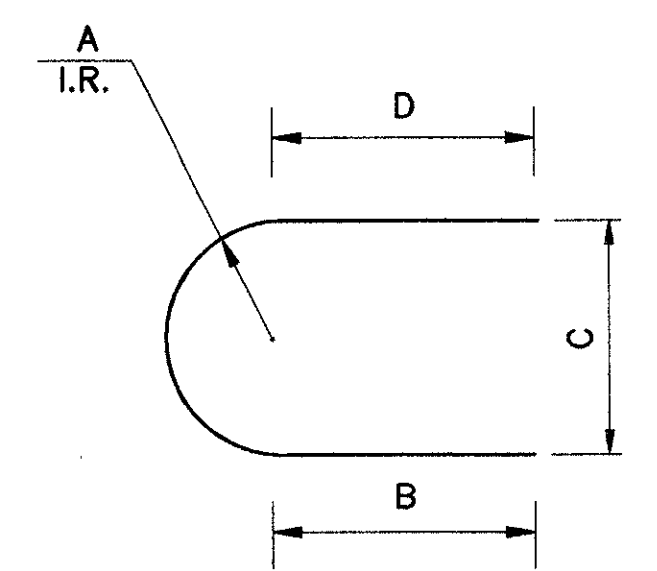
MARK	NUMBER			LENGTH	WEIGHT	TYPE	A	B	C	D	H	INC.	NUMBER	
	REAR	FORWARD	TOTAL										PHASE I	PHASE II
<b>PIERS DRILLED SHAFT REINFORCEMENT**</b>														
SP403	1	1	2	18'-4"	688	51	2'-6"	4 1/2"					1	1
SP404		1	1	20'-3"	378	51	2'-6"	4 1/2"					1	
SP405	1		1	17'-9"	333	51	2'-6"	4 1/2"					1	
SP406		1	1	19'-9"	369	51	2'-6"	4 1/2"					1	
SP425	1		1	17'-1"	321	51	2'-6"	4 1/2"						1
SP426	1		1	16'-5"	309	51	2'-6"	4 1/2"						1
SP427		1	1	19'-0"	356	51	2'-6"	4 1/2"						1
<b>PIERS</b>														
DS1101	12	12	24	20'-9"	2,646	STR							12	12
DS1102	12		12	20'-2"	1,286	STR							12	
DS1103		12	12	22'-8"	1,445	STR							12	
DS1104		12	12	22'-2"	1,413	STR							12	
DS1121	12		12	19'-6"	1,243	STR								12
DS1122	12		12	18'-10"	1,201	STR								12
DS1123		12	12	21'-5"	1,366	STR								12
P501*	4	4	8	13'-1"	109	STR							8	
P502	8	8	16	7'-3"	121	45	1'-3"	1'-7"	2'-8"	1'-7"			8	8
P503	6	6	12	4'-1"	51	6	2'-8"	10"	10"				6	6
P504	31	31	62	11'-2"	722	10	2'-8"	2'-8"					20	42
P521*	4	4	8	22'-11"	191	STR								8
P601		9	9	13'-10"	187	75	2'-8"	12"	2'-8"	12"	12"		9	
P621		7	7	13'-6"	142	75	2'-8"	10"	2'-8"	12"	12"		7	
P622		8	8	13'-2"	158	75	2'-8"	8"	2'-8"	12"	12"		8	
P701*	6	6	12	13'-1"	321	STR							12	
P721*	6	6	12	22'-11"	562	STR								12
P1001*	6	6	12	13'-1"	675	STR							12	
P1021*	6	6	12	22'-11"	1,184	STR								12
<b>PIERS TOTAL WEIGHT = 4,423</b>														



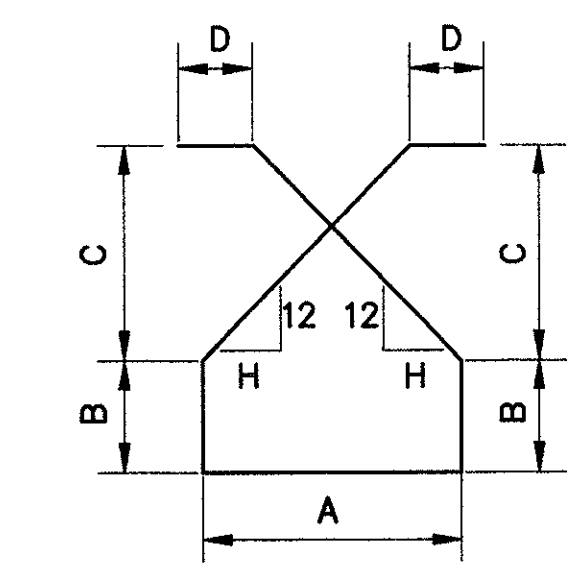
TYPE 10



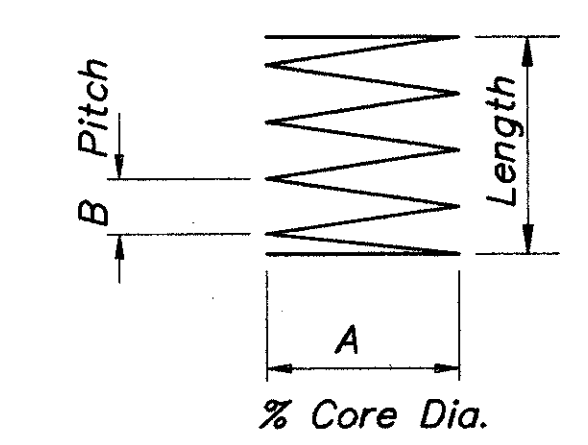
TYPE 6



TYPE 45



TYPE 75



TYPE 51

\* Bars Have Mechanical Connector Splices.  
 \*\* Included With Item Special - "Drilled Shafts" for Payment.

Bar Size is Indicated in the Bar Mark. The First Digit Where Three Digits are used, and the First Digits Where Four are Used, Indicate the Bar Size Number. For Example, A700 is a No. 7 and A1014 is a No. 10 Size. Bar Dimensions Shown are Out to Out Unless Otherwise Indicated. R Indicates Inside Radius, Unless Otherwise Noted. "Std." Written in Place of a Dimension Indicates a Standard Bend at the End of the Bar.

All Reinforcing Steel to be Epoxy Coated

<b>CT Consultants, Inc.</b> Engineers • Architects • Planners <small>Willoughby • Mentor • Columbus • North Canton • Youngstown</small>					
17/17					
<b>REINFORCING SCHEDULE</b>					
<b>BRIDGE NO. LAK-608-0075</b>					
<b>OVER BIG CREEK</b>					
<b>LAKE COUNTY</b>					
DESIGNED	DRAWN	TRACED	CHECKED	REVIEWED DATE	REVISED
R.L.B.	R.I.P.	R.I.P.	J.P.R.	J.E.A. 5-29-93	