

BENCHMARK: TOP OF PIN W/RED REFERENCE CAP
STA. 19+50, 12' RT., ELEV. 903.31

NOTE: EARTHWORK LIMITS SHOWN ARE APPROXIMATE. ACTUAL SLOPES SHALL CONFORM TO PLAN CROSS-SECTIONS.

DESIGN AVERAGE DAILY TRAFFIC: 3010 (2012)
DESIGN AVERAGE DAILY TRUCK TRAFFIC: 90 (2012)

EXISTING STRUCTURE

TYPE: THREE SPAN, CONTINUOUS REINFORCED CONCRETE SLAB WITH REINFORCED CONCRETE SUBSTRUCTURE

SPAN: 29'-6"±, 37'-6"±, 29'-6"± ALONG REF. CHORD
ROADWAY: 36'-0" F/F GUARDRAIL
SKEW: VARIES 0° 18' R.F. TO 5° 15' L.F.
ALIGNMENT: 9° 00' CURVE LEFT
WEARING SURFACE: BITUMINOUS CONCRETE
APPROACH SLABS: AS-1-54 (15'±)
STRUCTURE FILE NUMBER: 4306244

PROPOSED STRUCTURE

TYPE: THREE SPAN, CONTINUOUS REINFORCED CONCRETE SLAB, SPILL-THRU STUB ABUTMENTS AND CONCRETE PIER CAPS ON DRILLED SHAFTS.

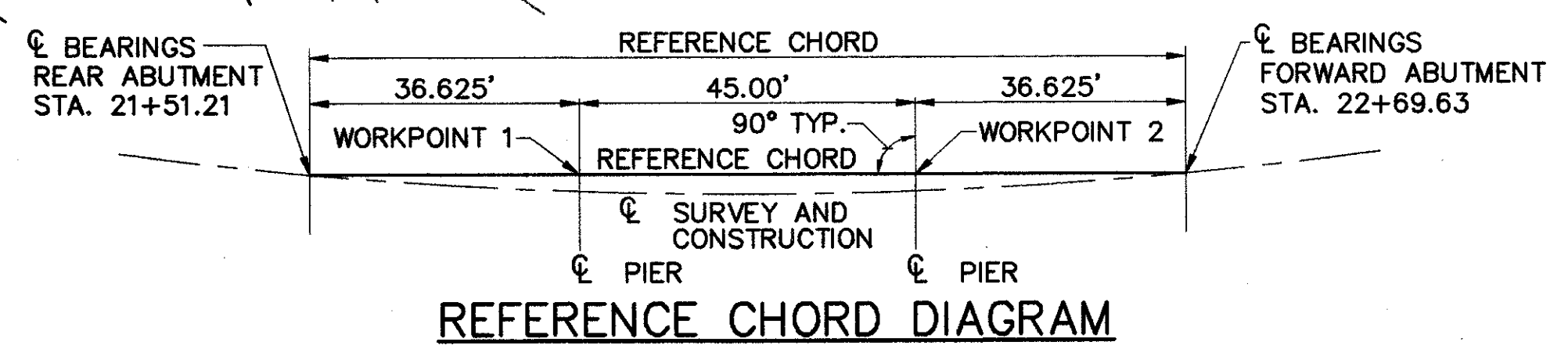
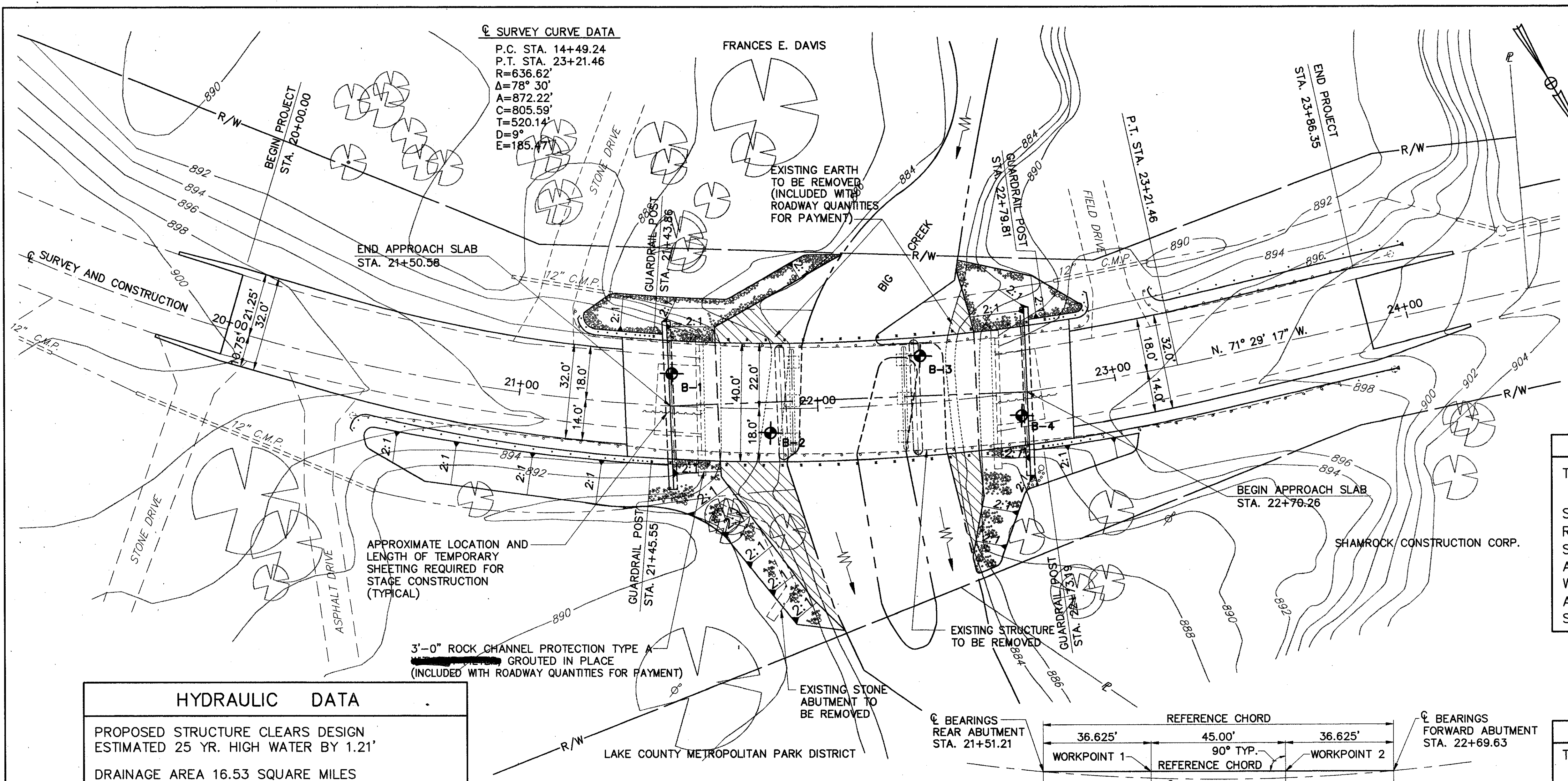
SPAN: 36'-7 1/2", 45'-0", 36'-7 1/2" C/C BEARINGS ALONG REFERENCE CHORD
ROADWAY: 40'-0" F/F GUARDRAIL
LOADING: HS20-44 AND THE ALTERNATE MILITARY LOADING
WEARING SURFACE: MONOLITHIC CONCRETE
APPROACH SLABS: AS-1-81 (15' LONG)
SKEW: 0°
SUPERELEVATION: 0.077 FT. PER FT.
ALIGNMENT: 9° 00' CURVE LEFT

REVIEWED BY BURGESS & NIPLE, LTD.
R.M.K. 02/22/94

CT Consultants, Inc.
Engineers - Architects - Planners
Willoughby - Mentor - Columbus - North Canton - Youngstown 1/17

SITE PLAN
BRIDGE NO. LAK - 608 - 0075
OVER BIG CREEK

LAKE COUNTY		STA. 21+50.58	
		STA. 22+70.26	
PRESENT TOPOGRAPHY		PROPOSED WORK	
SURVEYED	DRAWN	DESIGNED	DRAWN
REVIEWED	CHECKED		
R.J.B.	R.L.B.	J.E.A.	R.L.B.
	D.J.W.	J.S.R.	



PLAN

REFERENCE CHORD DIAGRAM

HYDRAULIC DATA

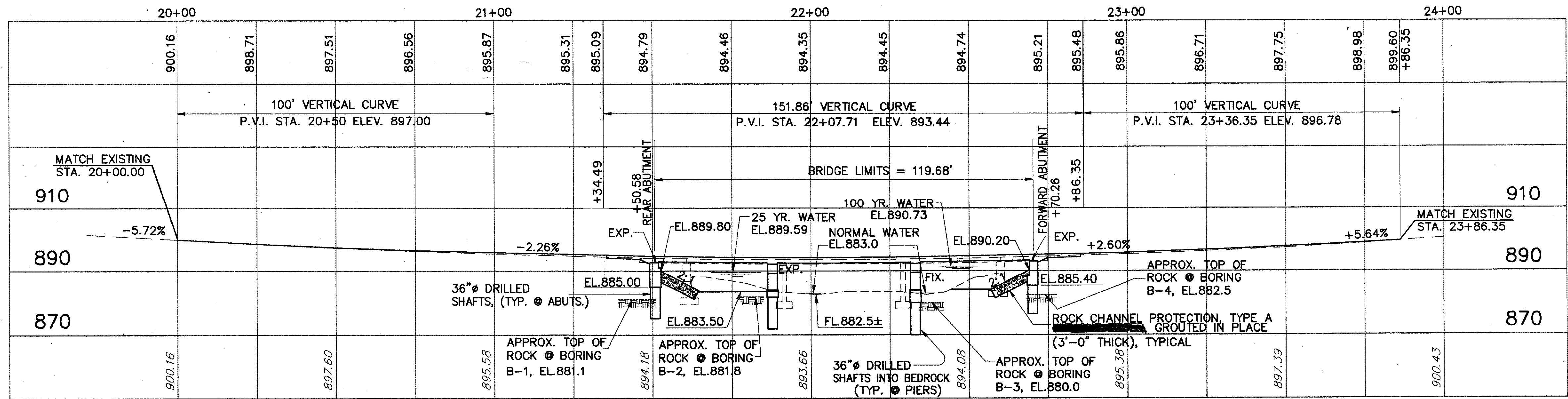
PROPOSED STRUCTURE CLEARS DESIGN ESTIMATED 25 YR. HIGH WATER BY 1.21'

DRAINAGE AREA 16.53 SQUARE MILES

ESTIMATED: Q₂₅ = 2545 CFS V₂₅ = 5.65 FT/SEC
Q₁₀₀ = 3506 CFS V₁₀₀ = 6.25 FT/SEC

APPROXIMATE LOCATION AND LENGTH OF TEMPORARY SHEETING REQUIRED FOR STAGE CONSTRUCTION (TYPICAL)

3'-0" ROCK CHANNEL PROTECTION TYPE A GROUTED IN PLACE (INCLUDED WITH ROADWAY QUANTITIES FOR PAYMENT)



PROFILE ALONG C SURVEY AND CONSTRUCTION