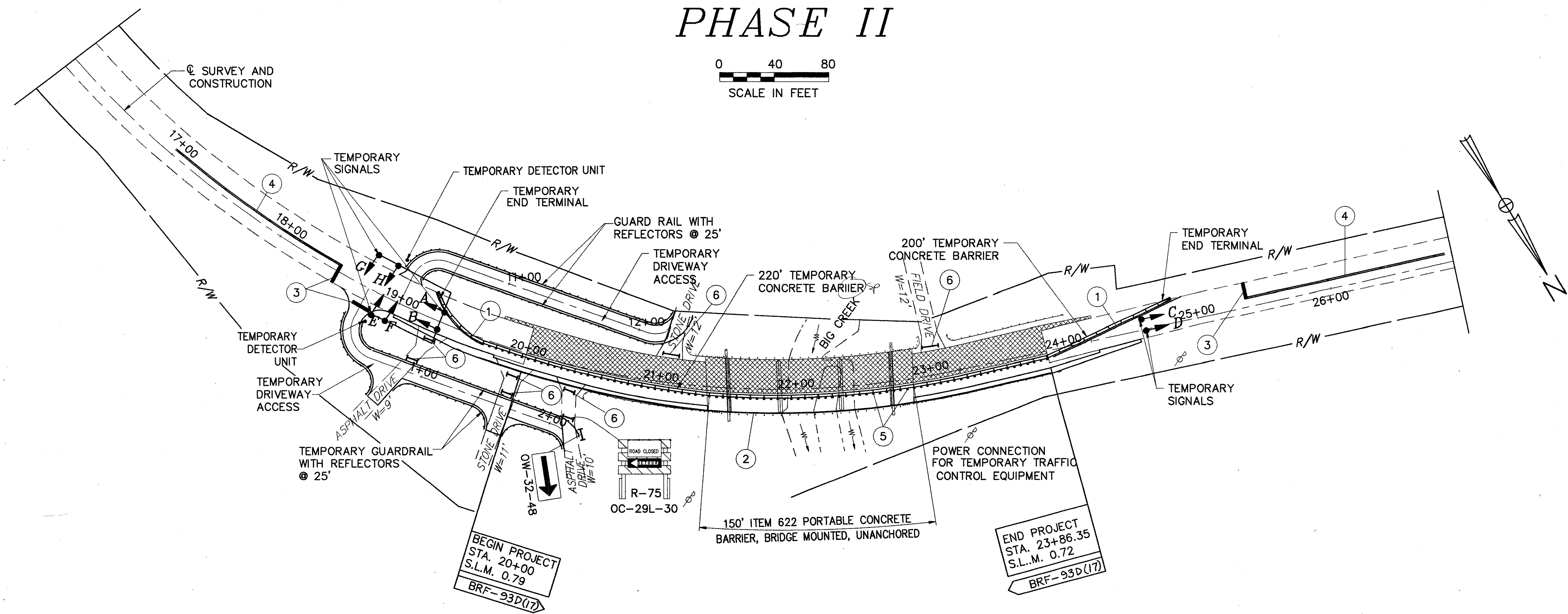
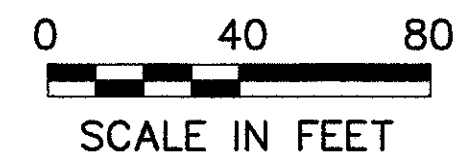


MAINTENANCE OF TRAFFIC PHASE II



LEGEND

- ① TEMPORARY EDGE LINE (WHITE)
 - ② TEMPORARY EDGE LINE W/TEMPORARY RAISED PAVEMENT MARKERS (2-WAY WHITE, YELLOW)
 - ③ TEMPORARY STOP LINE
 - ④ TEMPORARY CENTER LINE (DOUBLE, YELLOW, SOLID) W/TEMPORARY RAISED PAVEMENT MARKERS (1-WAY, YELLOW)
 - ⑤ TEMPORARY RAISED PAVEMENT MARKERS (2-WAY WHITE, YELLOW)
 - ⑥ ROAD CLOSED
- R-75
- TEMPORARY PAVEMENT
- WORK AREA

ADVANCED WARNING SIGNS				
CODE	SIZE	LEGEND	STATION	SIDE
OW-128-36	36" x 36"	ROAD CONSTRUCTION AHEAD & TYPE A LIGHT	9+00	L & R
OW-143-24	24" x 24"	25 MPH		
OW-152-48	36" x 36"	PREPARE TO STOP & TYPE A LIGHT	11+00	L & R
OW-143-24	24" x 24"	25 MPH		
OW-121-36	36" x 36"	ONE LANE ROAD AHEAD & TYPE A LIGHT	13+00	L & R
OW-143-24	24" x 24"	25 MPH		
OW-47-36	36" x 36"	SIGNAL AHEAD	15+00	L & R
OC-8-60	60" x 24"	END CONSTRUCTION	15+00	L
OW-166-36	36" x 36"	WATCH FOR STOPPED TRAFFIC & TYPE A LIGHT	17+00	L & R
OW-143-24	24" x 24"	25 MPH		
R-3L-24	24" x 36"	STOP HERE ON RED & WAIT FOR GREEN	18+50	R
X-3	9" x 15"	REFLECTOR	19+25	L
OW-32-48	48" x 24"	ARROW	20+00	R
X-3	9" x 15"	REFLECTOR	24+62	L
R-3L-24	24" x 36"	STOP HERE ON RED & WAIT FOR GREEN	25+36	L
OW-47-36	36" x 36"	SIGNAL AHEAD	28+86	L & R
OC-8-60	60" x 24"	END CONSTRUCTION	28+86	R
OW-121-36	36" x 36"	ONE LANE ROAD AHEAD & TYPE A LIGHT	30+86	L & R
OW-143-24	24" x 24"	25 MPH		
OW-128-36	36" x 36"	ROAD CONSTRUCTION AHEAD & TYPE A LIGHT	34+86	L & R
OW-143-24	24" x 24"	25 MPH		
OW-152-48	36" x 36"	PREPARE TO STOP & TYPE A LIGHT	32+86	L & R
OW-143-24	24" x 24"	25 MPH		

NOTES:

1. SEE DRAWING 209620C AND 209611C (SHEETS 27 & 28 OF 45) AND DRAWING MT-96.11 FOR SIGNING, PAVEMENT MARKING, SIGNALS, ADDITIONAL DETAILS AND DIMENSIONS.
2. ALL TEMPORARY SIGNALS SHALL BE OVERHEAD.
3. ALL SIGNAL CONTROLLERS SHALL BE ACTUATED.
4. THE TEMPORARY DETECTOR UNIT SHALL BE :
 - 1) A MAGNETIC SENSOR ATTACHED TO A LIGHT WOOD POST AT ROADSIDE IF ONLY A SINGLE APPROACH LANE.
 - 2) LOOPS OR MAGNETOMETERS IMBEDDED IN OR FASTENED TO THE DRIVE SURFACE (IMBEDMENT SHALL NOT BE USED FOR CONCRETE OR ASPHALT UNLESS THE SURFACE IS TO BE SURFACED OVER LATER AS PART OF THE WORK).
 - 3) SONIC DETECTORS MOUNTED ON A SUITABLE SUPPORT BESIDE OR OVER THE ROAD.