

BENCHMARK: TOP OF PIN W/RED REFERENCE CAP
STA. 19+50, 12" RT., ELEV. 903.31

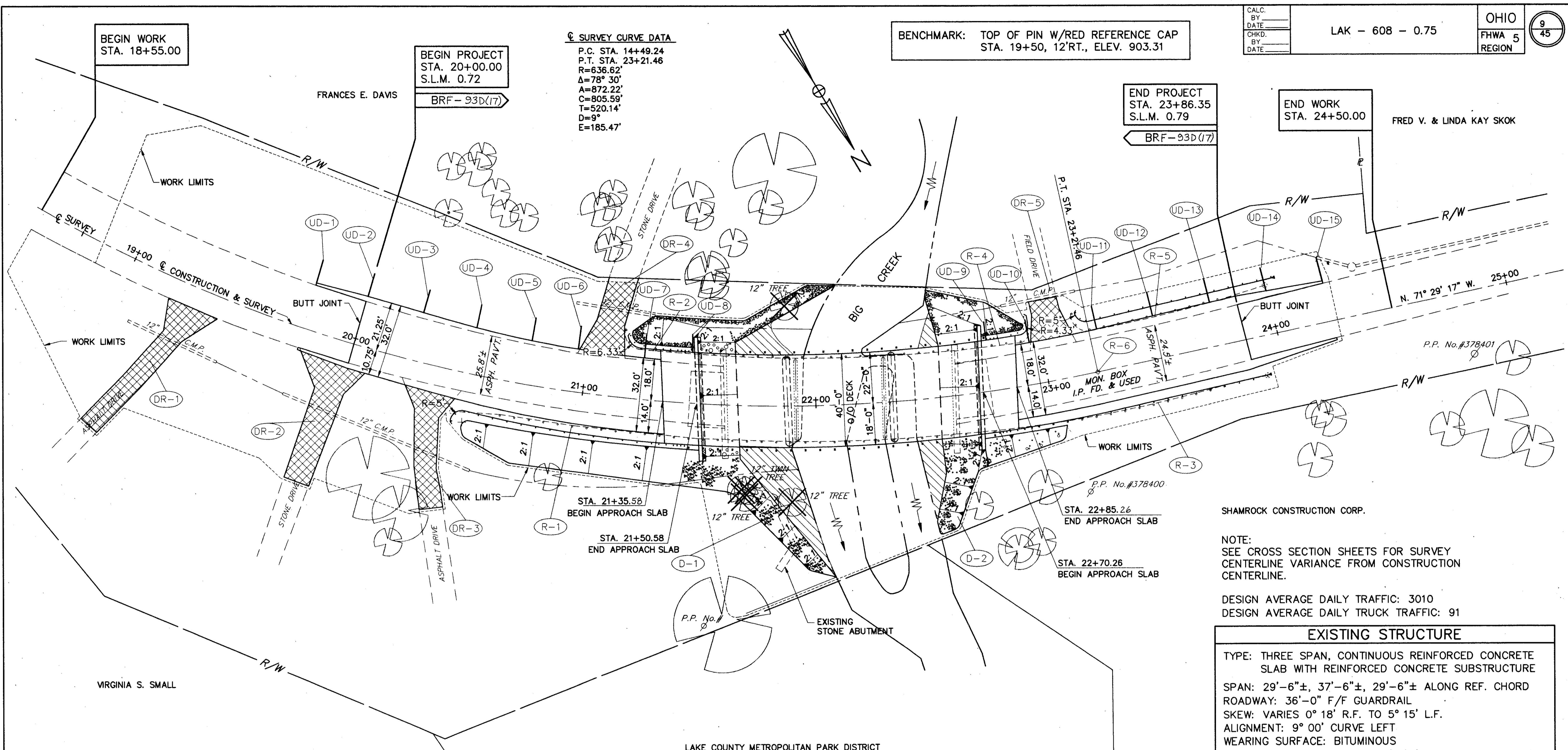
☉ SURVEY CURVE DATA
P.C. STA. 14+49.24
P.T. STA. 23+21.46
R=636.62'
Δ=78° 30'
A=872.22'
C=805.59'
T=520.14'
D=9°
E=185.47'

BEGIN WORK
STA. 18+55.00

BEGIN PROJECT
STA. 20+00.00
S.L.M. 0.72

END PROJECT
STA. 23+86.35
S.L.M. 0.79

END WORK
STA. 24+50.00



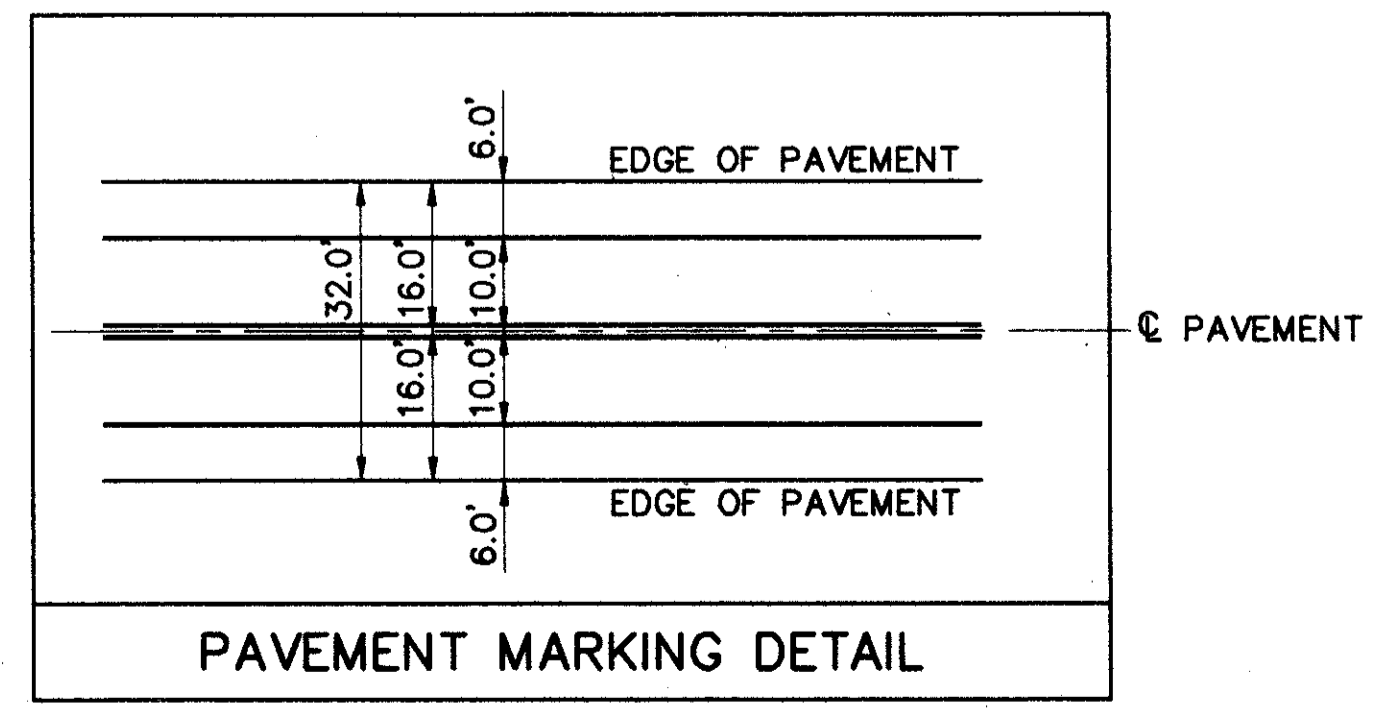
SHAMROCK CONSTRUCTION CORP.

NOTE:
SEE CROSS SECTION SHEETS FOR SURVEY CENTERLINE VARIANCE FROM CONSTRUCTION CENTERLINE.

DESIGN AVERAGE DAILY TRAFFIC: 3010
DESIGN AVERAGE DAILY TRUCK TRAFFIC: 91

EXISTING STRUCTURE	
TYPE:	THREE SPAN, CONTINUOUS REINFORCED CONCRETE SLAB WITH REINFORCED CONCRETE SUBSTRUCTURE
SPAN:	29'-6"±, 37'-6"±, 29'-6"± ALONG REF. CHORD
ROADWAY:	36'-0" F/F GUARDRAIL
SKEW:	VARIABLES 0° 18' R.F. TO 5° 15' L.F.
ALIGNMENT:	9° 00' CURVE LEFT
WEARING SURFACE:	BITUMINOUS
APPROACH SLABS:	AS-1-54 (15'±)
STRUCTURE FILE NUMBER:	4306244

PROPOSED STRUCTURE	
TYPE:	THREE SPAN, CONTINUOUS REINFORCED CONCRETE SLAB, SPILL-THRU STUB ABUTMENTS AND CONCRETE PIER CAPS ON DRILLED SHAFTS.
SPAN:	36'-7 1/2", 45'-0", 36'-7 1/2" C/C BEARINGS ALONG REFERENCE CHORD
ROADWAY:	40'-0" F/F GUARDRAIL
LOADING:	HS20-44 AND THE ALTERNATE MILITARY LOADING
WEARING SURFACE:	MONOLITHIC CONCRETE
APPROACH SLABS:	AS-1-81 (15' LONG)
SKEW:	0°
SUPERELEVATION:	0.077 FT. PER FT.
ALIGNMENT:	9° 00' CURVE LEFT



DEBRIS REMOVED
DRIVEWAY REPLACEMENT, SEE SHEETS 19-20.

FOR PROFILE SEE SHEET 10.
FOR CROSS SECTIONS SEE SHEETS 11-18.
FOR TYPICAL SECTIONS SEE SHEETS 2-3.
FOR MAINTENANCE OF TRAFFIC DETAILS SEE SHEETS 21-28.
FOR BRIDGE DETAILS SEE SHEETS 29-45.
FOR QUANTITY TABLES SEE SHEET 6.

