

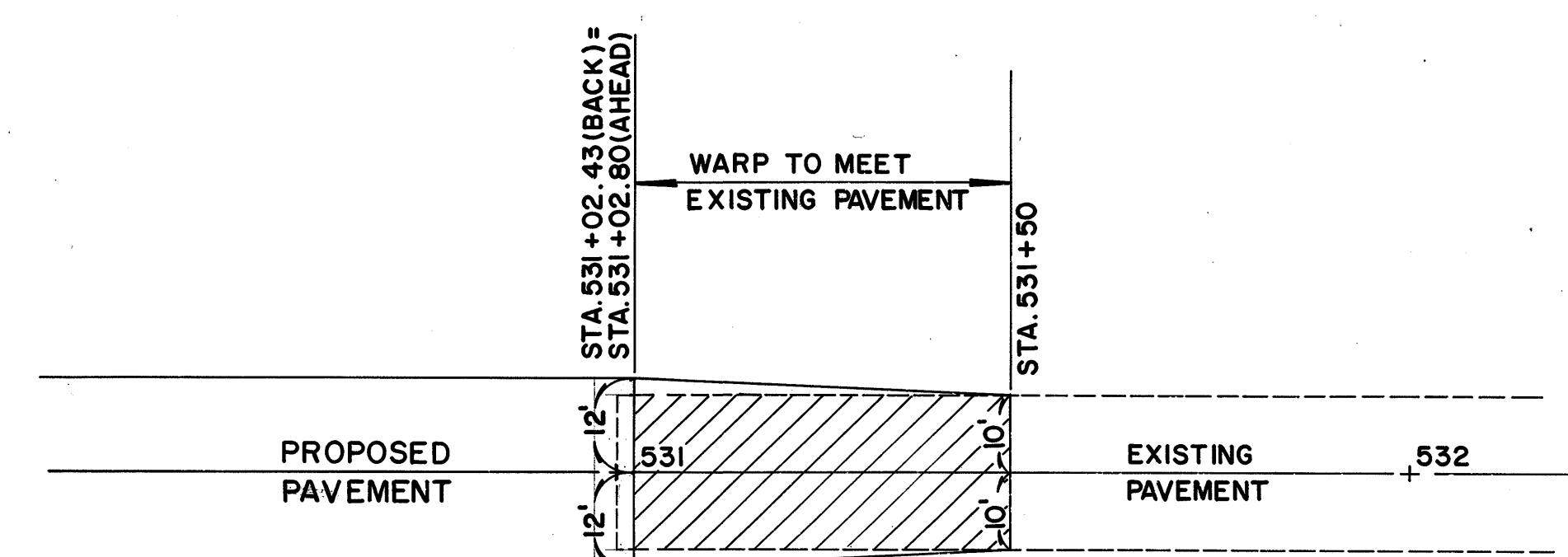
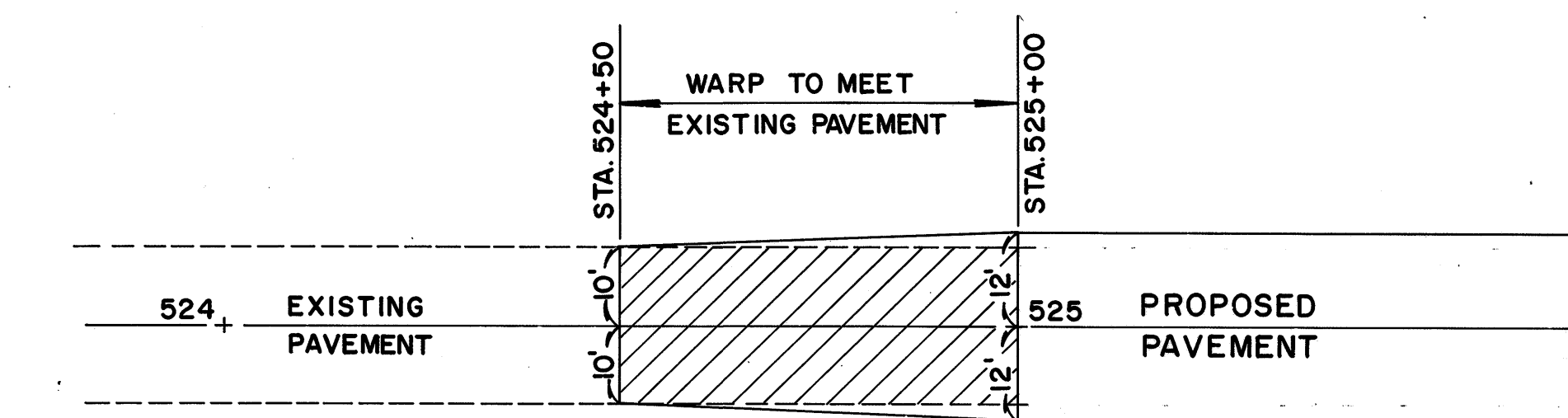
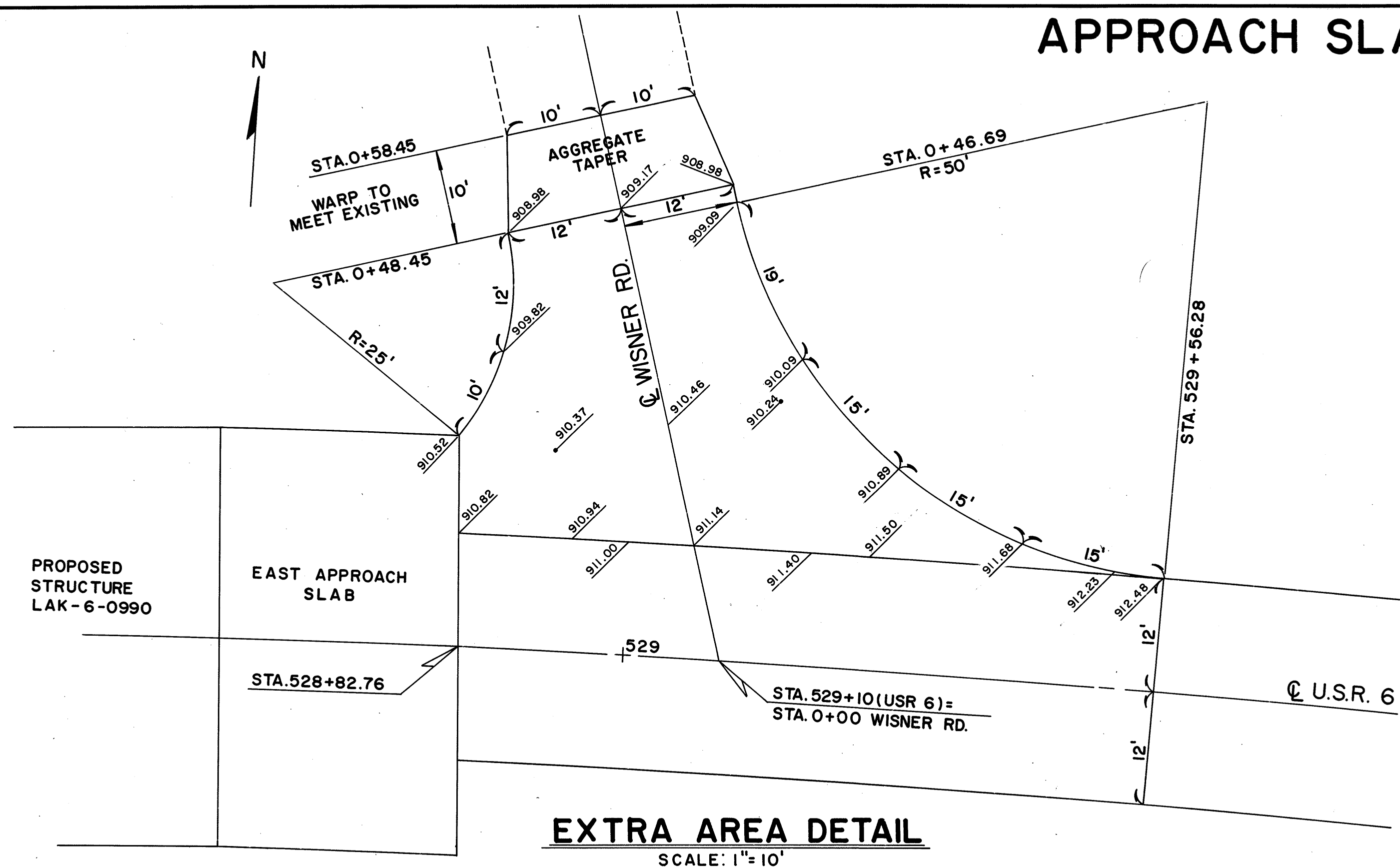
APPROACH SLAB & EXTRA AREA DETAILS

| | | | |
|-------------------|-------|---------|--|
| FED. RD. DIVISION | STATE | PROJECT | |
| 5 | OHIO | | |

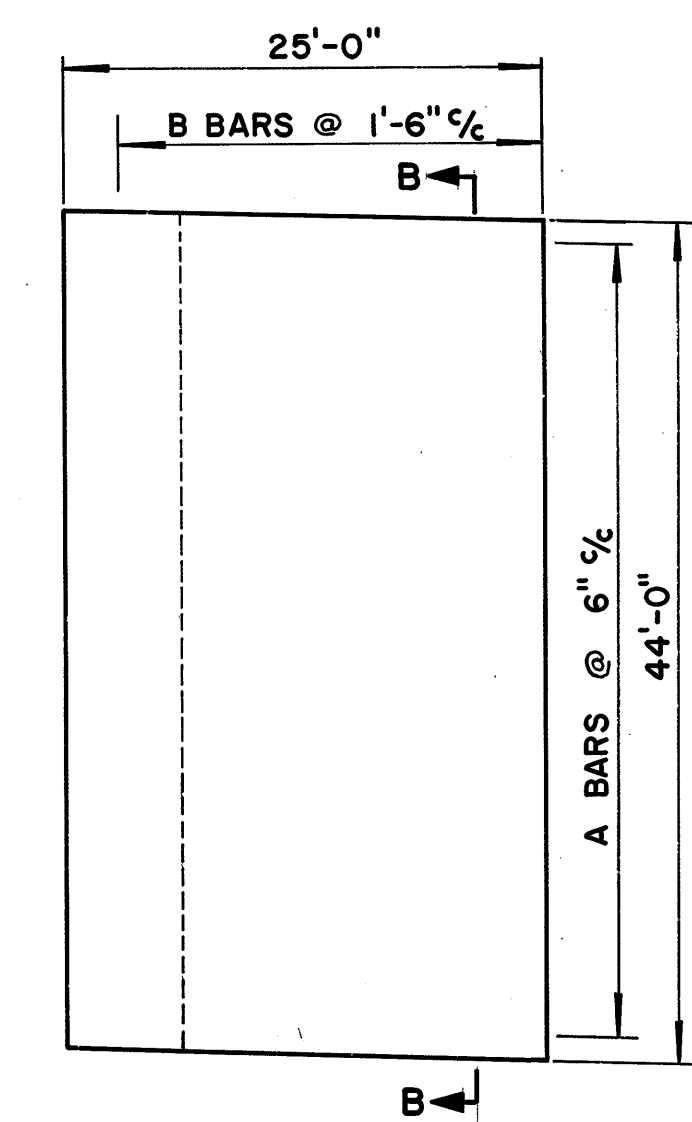
9
21

LAKE COUNTY
LAK-6-09.84

COMPUTED BY: DL MAY 74
CHECKED BY: RN MAY 74

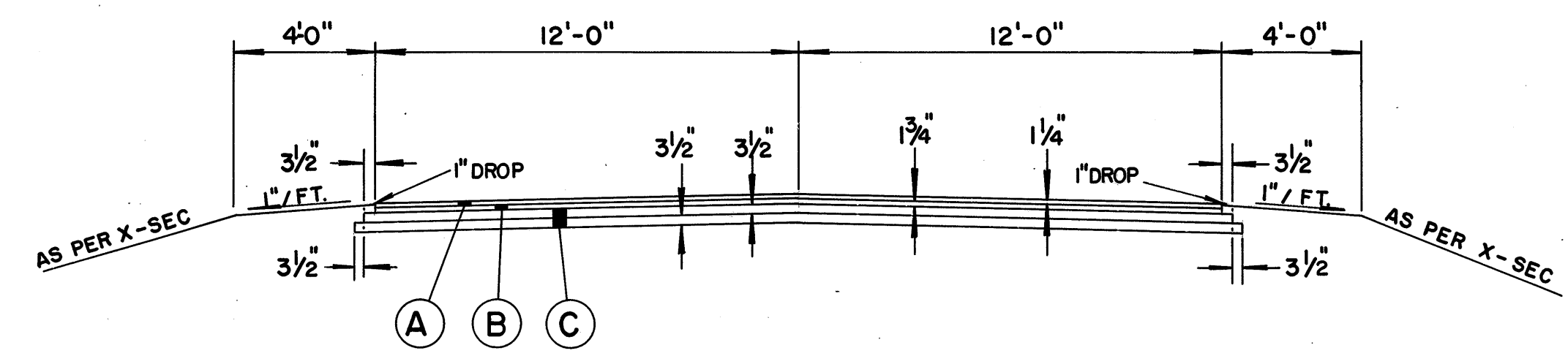


| EXTRA AREA QUANTITIES | | 301 | 304 | 402 | 404 | 407 | 202 |
|-----------------------|-----------------------|---------------------------|------------------------|------------------|------------------|-----------|------------------|
| LOCATION | STATION | BITUMINOUS AGGREGATE BASE | AGGREGATE BASE (TAPER) | ASPHALT CONCRETE | ASPHALT CONCRETE | TACK COAT | PAVEMENT REMOVED |
| | | CU. YD. | CU. YD. | CU. YD. | CU. YD. | GAL. | SQ. YD. |
| WISNER RD. RETURN | 0+58.45 | 29.65 | 2.11 | 7.29 | 5.19 | — | — |
| USR 6 | 528+82.76 - 529+56.28 | 38.80 | — | 9.54 | 6.80 | — | — |
| USR 6 | 524+50 - 525+00 | 24.70 | — | 5.95 | 4.24 | — | 111 |
| USR 6 | 531+02.80 - 531+50 | 23.31 | — | 5.62 | 4.00 | — | 105 |
| USR 6 | APPROACH SLABS | — | — | 11.90 | 8.47 | 25 | — |
| TOTALS | | 116.46 | 2.11 | 40.30 | 28.70 | 25 | 216 |



| SLAB | REINFORCING STEEL | | | | | | | | | |
|------|-------------------|--------|-----------------|--------|--------------|--------|------------|--------|------------|--|
| | A BARS | | B BARS (BOTTOM) | | B BARS (TOP) | | C BARS | | D BARS | |
| | NO. REQ'D. | LENGTH | NO. REQ'D. | LENGTH | NO. REQ'D. | LENGTH | NO. REQ'D. | LENGTH | NO. REQ'D. | |
| EAST | 81 | 25'-9" | 20 | 43'-6" | 18 | 43'-6" | 30 | 24'-6" | 30 | |
| WEST | 81 | 25'-9" | 20 | 43'-6" | 18 | 43'-6" | 30 | 24'-6" | 30 | |

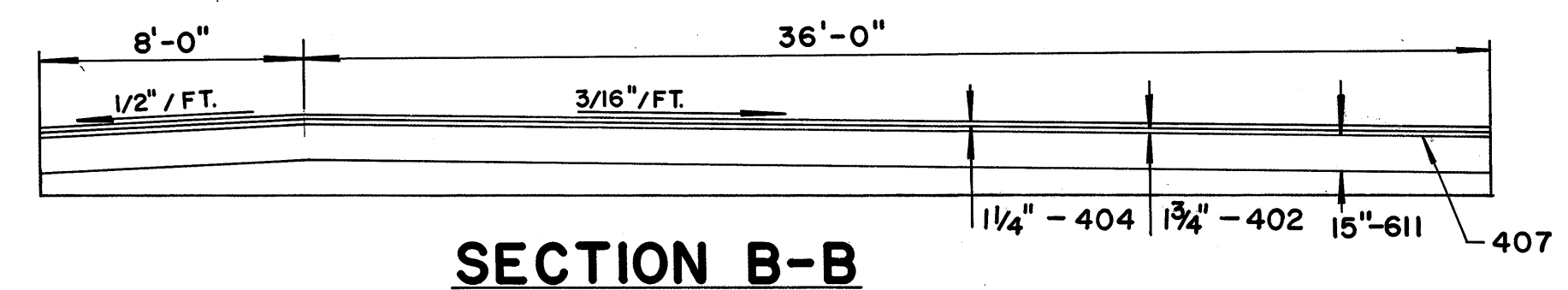
| SLAB | QUANTITIES | |
|--------------|-----------------------------------|--------------|
| | ITEM 611 | ITEM 310 |
| | REINFORCED CONCRETE APPROACH SLAB | 6" SUBBASE |
| EAST | 122.2 | 20.87 |
| WEST | 122.2 | 20.87 |
| TOTAL | 244.4 | 41.74 |



- (A) ITEM 404 - ASPHALT CONCRETE AC-20
- (B) ITEM 402 - ASPHALT CONCRETE AC-20
- (C) ITEM 301 - BITUMINOUS AGGREGATE BASE; 702.01 AC-20 OR 702.09, RT 11 OR RT 12

STA. 0+48.45
TYPICAL SECTION
SCALE: 1/4" = 1'-0"

PLAN VIEW-EAST APPROACH SLAB
APPROACH SLABS SYMMETRICAL ABOUT CENTER OF BRIDGE



SECTION B-B

NOTES:
"A" BARS ARE NO. 9 BARS "B" & "C" BARS ARE NO. 5 BARS, "D" BARS ARE NO. 8 BARS. OMIT HOLES FOR FUTURE MUDJACKING SHOWN ON STD. DRWG. AS-1-72 ITEM 407 - TACK COAT SHALL BE APPLIED TO APPROACH SLABS @ 0.10 GAL/SQ. YD. *Cover aggregate is not required.*
FOR ADDITIONAL NOTES AND DETAILS REFER TO STD. DRWG. AS-1-72.

WISNER ROAD DETAILS

APPROACH SLABS