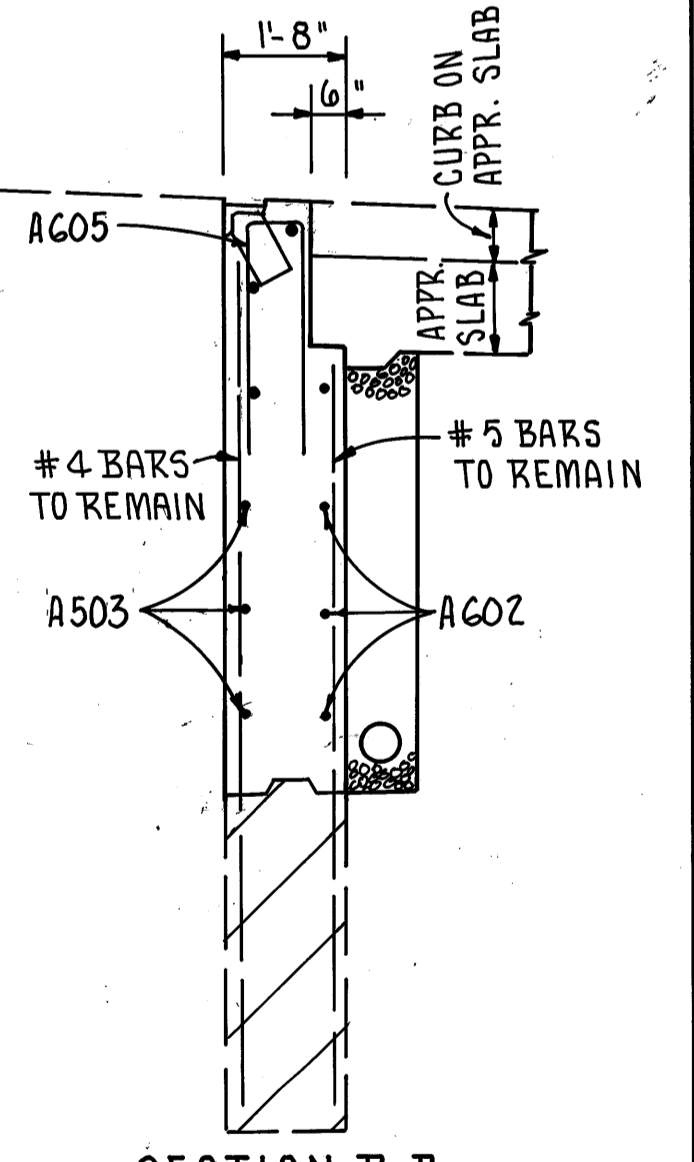
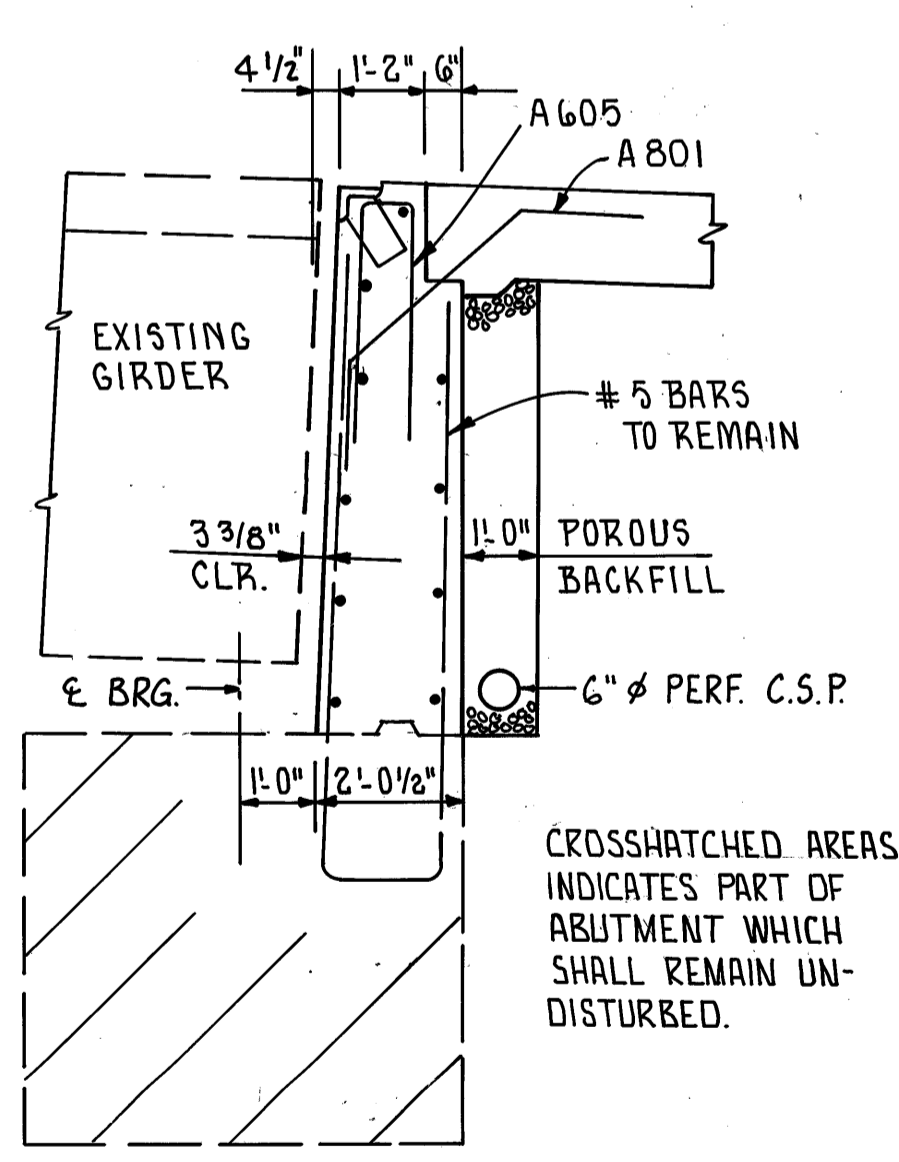
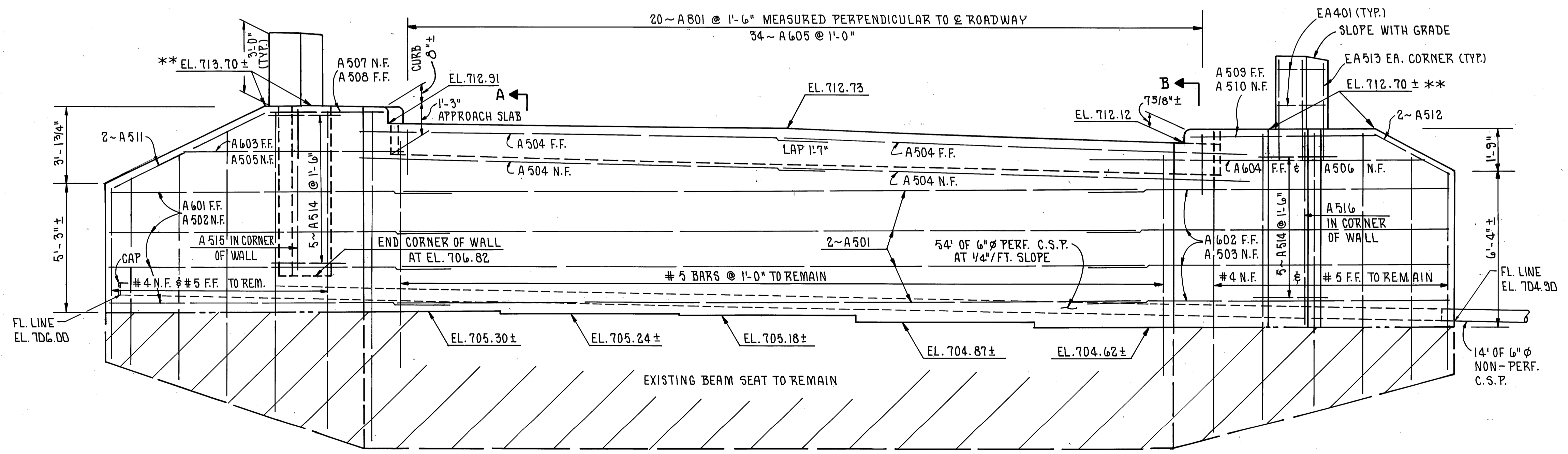
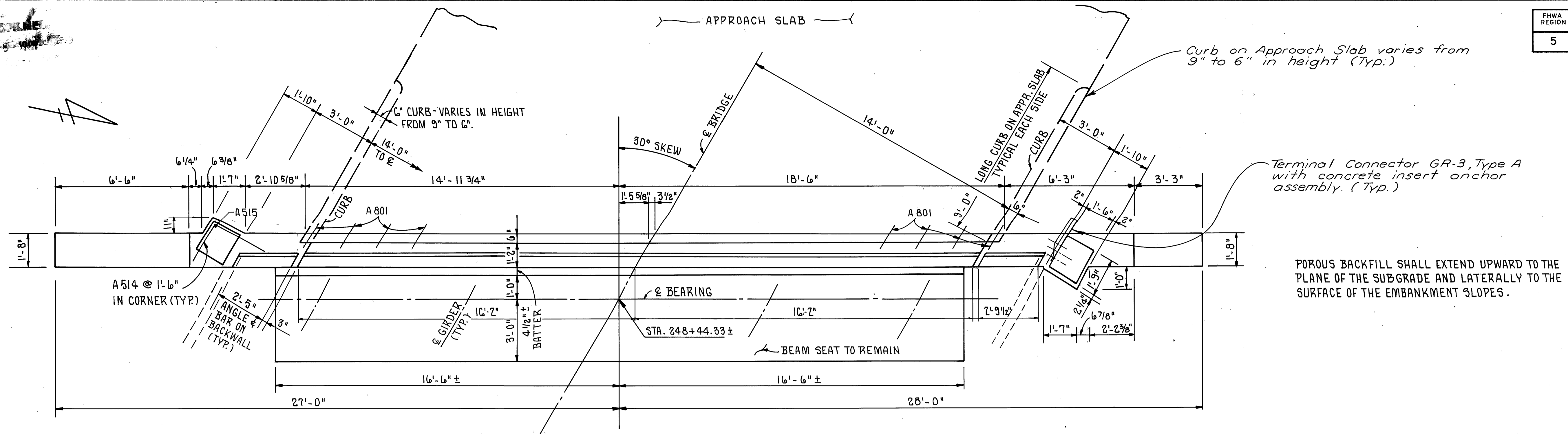


CRITCHELL
NOV 5 1982

FHWA REGION	STATE	PROJECT
5	OHIO	

8
11

LAKE COUNTY
LAK-6-04.61



LEGEND

F.F. FAR FACE
N.F. NEAR FACE

NOTE: BEAM SEAT ELEVATIONS OBTAINED FROM FIELD SURVEY. THE CONTRACTOR SHALL VERIFY THESE ELEVATIONS.

** NOTE: ELEVATIONS AT TOP OF WINGWALLS AT SAFETY CURBS ARE APPROXIMATE. ELEVATION WILL BE REQUIRED TO MATCH REINSTALLED 3/8" SIDEWALK FLOOR PLATE.

SEE SHEET 4/6 FOR TOP OF ABUTMENT ELEVATIONS.

LAKE INC. ENGINEERING 3/6
WICKLIFFE, OHIO

WEST ABUTMENT DETAIL
BRIDGE NO. LAK-6-0461
S.R. 6 OVER
THE CHAGRIN RIVER

LAKE COUNTY S.R. 6

DESIGNED	DRAWN	TRACED	CHECKED	REVIEWED	DATE	REVISED
HM	HM	ff	NK	JT	11/5/82	

BRUNING 44-132 20845-1