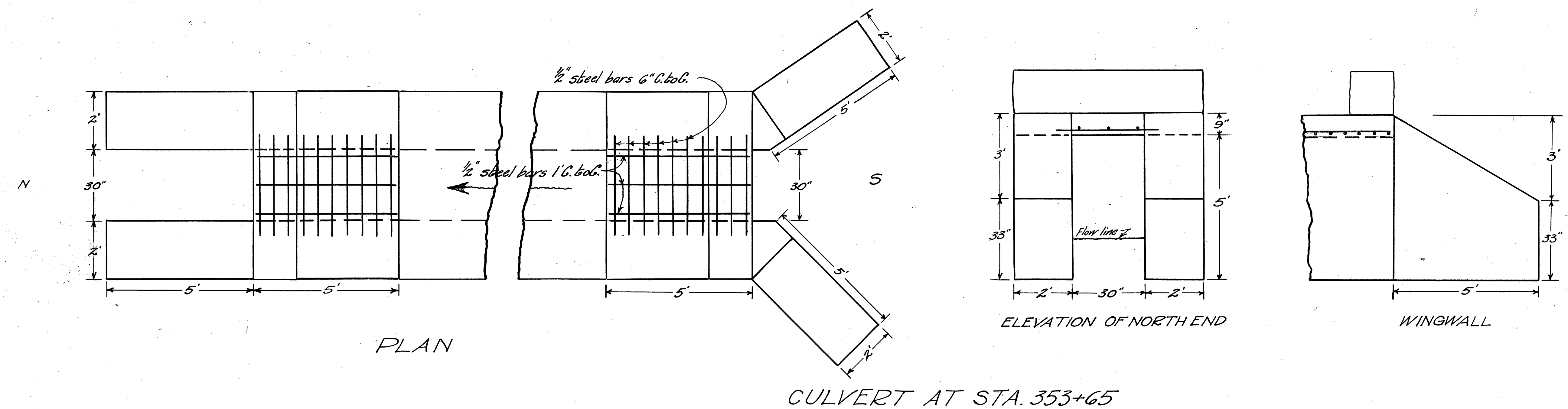
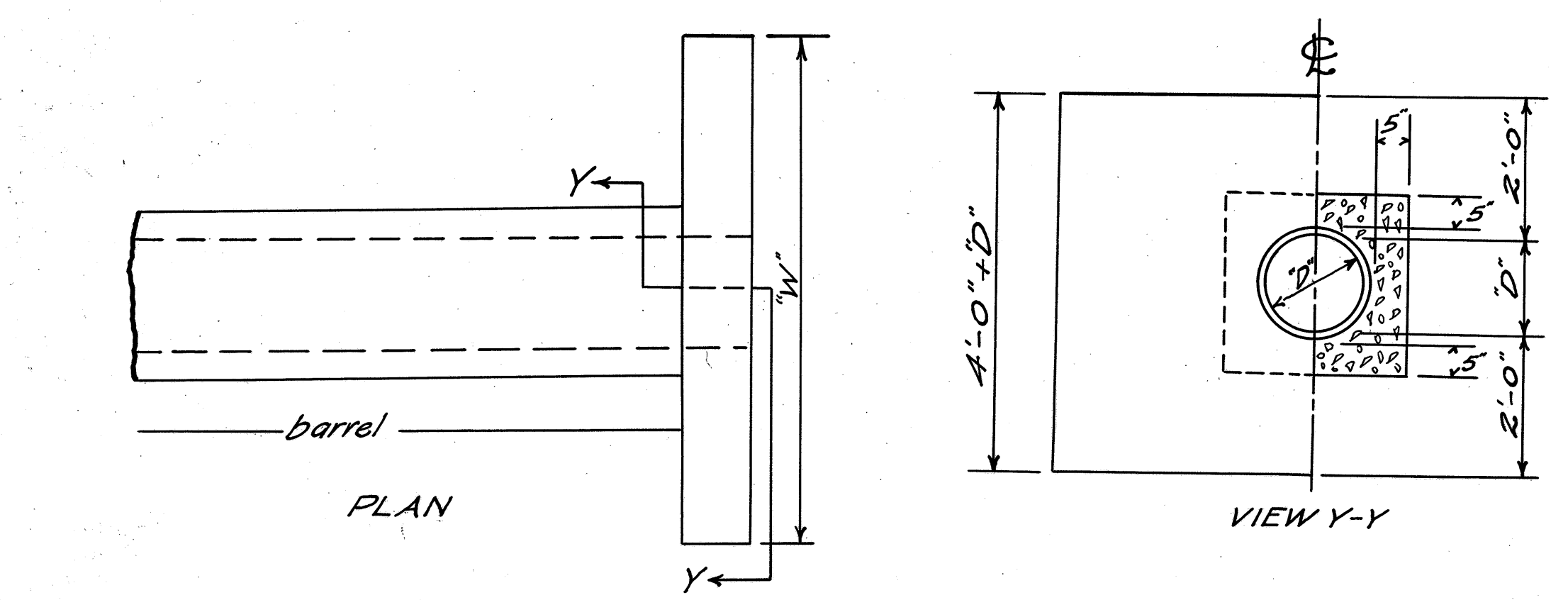


I.C.H. No 34 SEC. Cth D
LAKE COUNTY
QUANTITIES

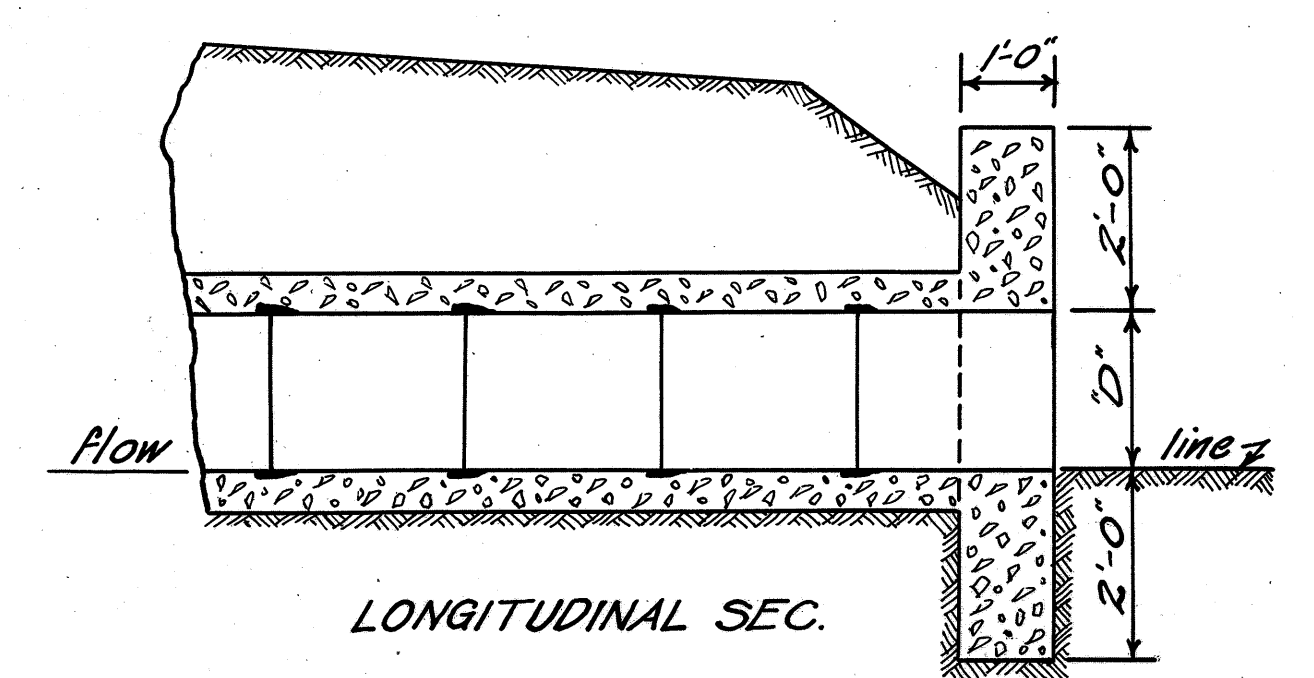
16 cu.yds. 1-2-4 concrete
85 lbs. of steel
9 cu.yds. excavation
2 parapets to be reset
repoint old stone masonry



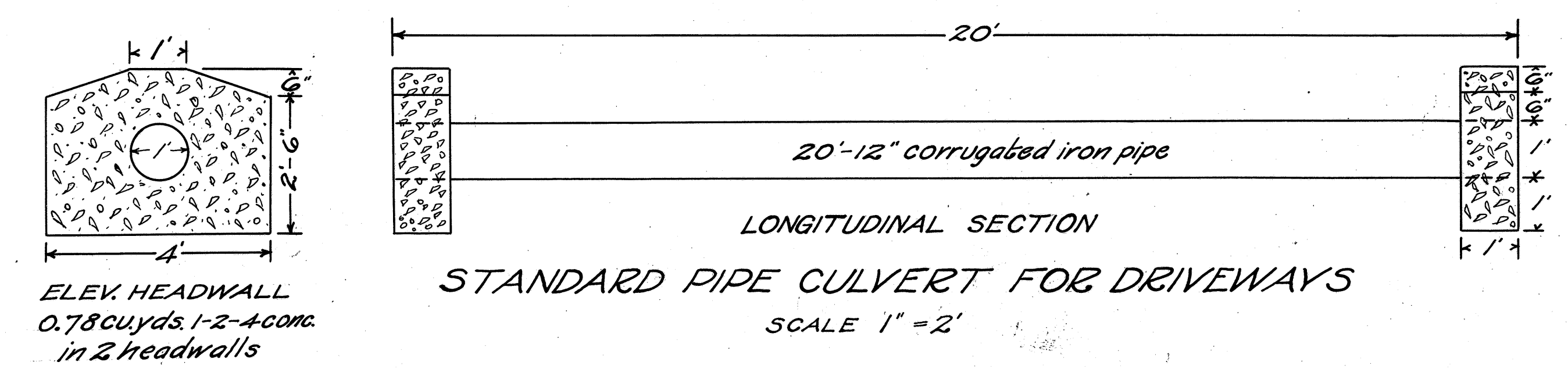
CULVERT AT STA. 353+65



D ^m diam. pipe	W ^m width headwall	CU. YDS. CONC. in headwall	CU. YDS. CONC. in barrel
12"	5'-6"	2.0	.108
15"	6'-3"	2.3	.130
18"	7'-0"	2.7	.154
20"	7'-6"	3.0	.172
22"	8'-0"	3.2	.192
24"	8'-6"	3.5	.208
27"	9'-6"	4.0	.239
30"	10'-6"	4.6	.268
33"	11'-6"	5.2	.291
36"	12'-6"	5.8	.328



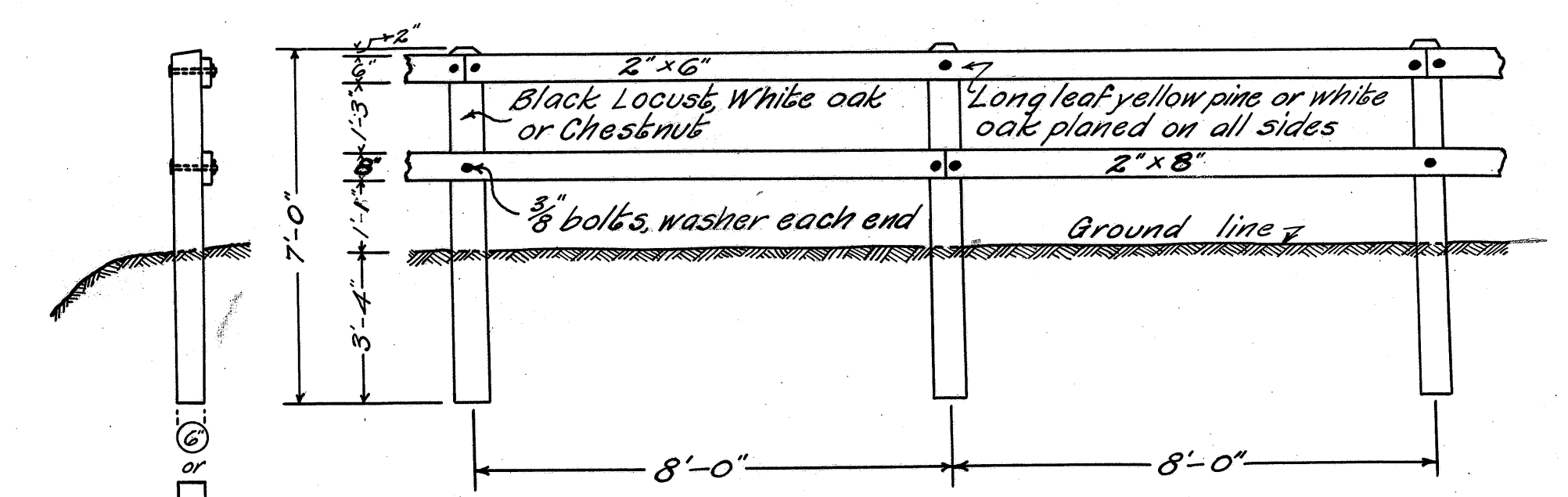
Headwalls 1:2:4 mix
Barrel 1:3:6 mix
STANDARD ENCASED VIT. PIPE CULVERT



ELEV. HEADWALL 0.78 cu.yds. 1-2-4 conc. in 2 headwalls
STANDARD PIPE CULVERT FOR DRIVEWAYS
SCALE 1" = 2'

BILL OF MATERIALS FOR TWO PANELS

2	Rails	2" x 6" x 16'
2	Posts	6" x 6" x 7'
6	Bolts	3/8" x 9"
12	Washers	3/8"



All surfaces in contact to be painted before assembling and all exposed surfaces to have two (2) coats of white lead and linseed oil paint. Posts to be set vertical, in line parallel to grade line, top of rail to be parallel to grade line. Posts to be cut at top as shown on plan. Rails to be secured to posts as shown, without splitting

TYPE "A" GUARD RAIL