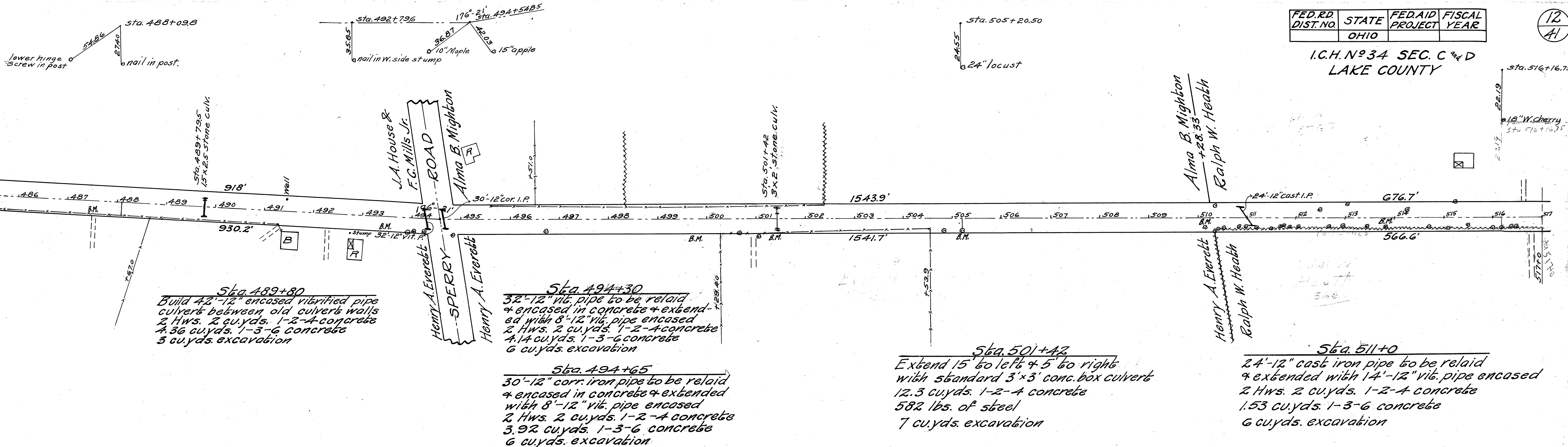


FED. RD. DIST. NO.	STATE	FED. AID PROJECT	FISCAL YEAR
	OHIO		

12
41

I.C.H. No 34 SEC. C 1/4 D
LAKE COUNTY



Sta. 489+80
Build 42'-12" encased vitrified pipe culvert between old culvert walls
2 Hws. 2 cu.yds. 1-2-A concrete
4.36 cu.yds. 1-3-G concrete
3 cu.yds. excavation

Sta. 494+30
32'-12" vit. pipe to be relaid & encased in concrete & extended with 8'-12" vit. pipe encased
2 Hws. 2 cu.yds. 1-2-A concrete
4.14 cu.yds. 1-3-G concrete
6 cu.yds. excavation

Sta. 494+65
30'-12" corr. iron pipe to be relaid & encased in concrete & extended with 8'-12" vit. pipe encased
2 Hws. 2 cu.yds. 1-2-A concrete
3.92 cu.yds. 1-3-G concrete
6 cu.yds. excavation

Sta. 501+42
Extend 15' to left & 5' to right with standard 3'x3' conc. box culvert
12.3 cu.yds. 1-2-A concrete
582 lbs. of steel
7 cu.yds. excavation

Sta. 511+0
24'-12" cast iron pipe to be relaid & extended with 14'-12" vit. pipe encased
2 Hws. 2 cu.yds. 1-2-A concrete
1.53 cu.yds. 1-3-G concrete
6 cu.yds. excavation

B.M. Sta. 487+50
top of lower hook on w. gate post
to R. of Φ
Elev. = 1075.71

B.M. Sta. 493+40
spike in 16" maple
to R. of Φ
Elev. = 1078.44

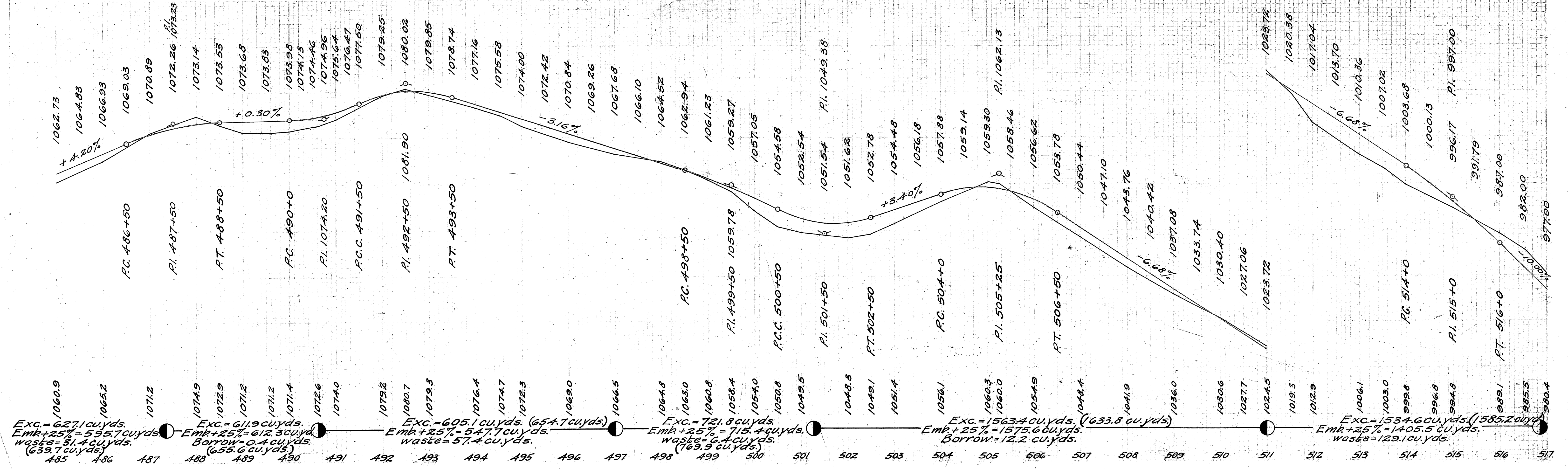
B.M. Sta. 499+80
spike in 24" elm
to R. of Φ
Elev. = 1059.54

B.M. Sta. 501+42
x on S.W. cor. of s. headwall
20' to R. of Φ
Elev. = 1047.40

B.M. Sta. 505+20
nail in root of 24" locust
24' to R. of Φ
Elev. = 1061.12

B.M. Sta. 510+12
spike in 30" walnut
20' to R. of Φ
Elev. = 1030.46

B.M. Sta. 513+80
nail in root of 16" hickory
20' to R. of Φ
Elev. = 1001.58



Exc. = 627.1 cu.yds.
Emb + 25% = 595.7 cu.yds.
Waste = 31.4 cu.yds.
(639.7 cu.yds.)

Exc. = 611.9 cu.yds.
Emb + 25% = 612.3 cu.yds.
Borrow = 0.4 cu.yds.
(655.6 cu.yds.)

Exc. = 605.1 cu.yds. (654.7 cu.yds.)
Emb + 25% = 547.7 cu.yds.
Waste = 57.4 cu.yds.

Exc. = 721.8 cu.yds.
Emb + 25% = 715.4 cu.yds.
Waste = 6.4 cu.yds.
(769.9 cu.yds.)

Exc. = 1563.4 cu.yds. (1633.8 cu.yds.)
Emb + 25% = 1575.6 cu.yds.
Borrow = 12.2 cu.yds.

Exc. = 1534.6 cu.yds. (1585.2 cu.yds.)
Emb + 25% = 1405.5 cu.yds.
Waste = 129.1 cu.yds.