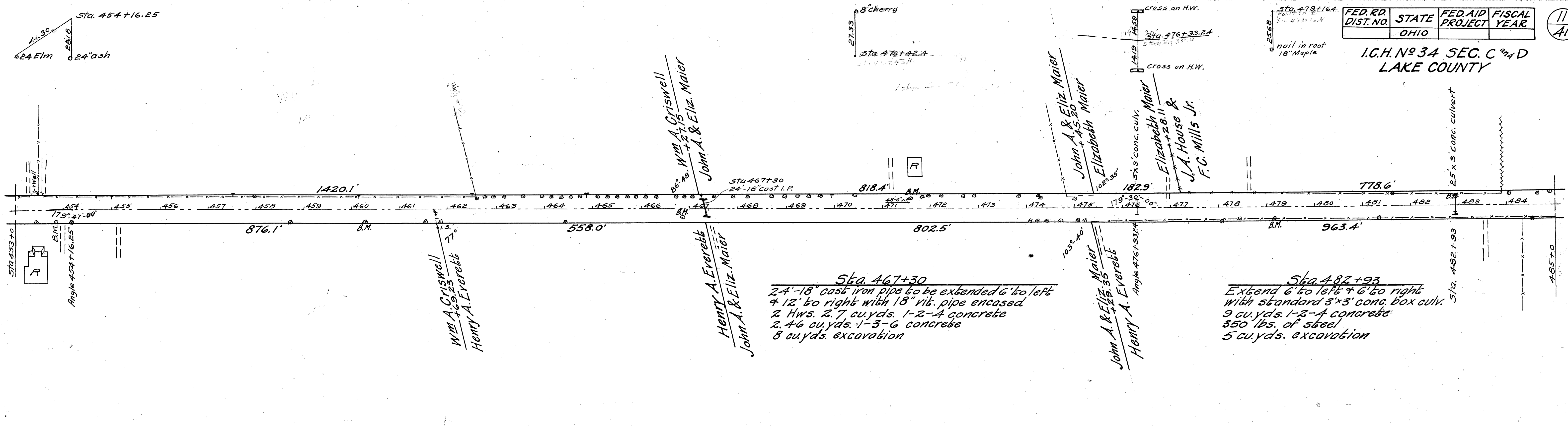


FED. RD. DIST. NO.	STATE	FED. AID PROJECT	FISCAL YEAR
	OHIO		

I.C.H. No 34 SEC. C and D
LAKE COUNTY



Sta. 467+30
24"-18" cast iron pipe to be extended 6' to left & 12' to right with 18" vit. pipe encased
2 Hws. 2.7 cu.yds. 1-2-4 concrete
2.46 cu.yds. 1-3-6 concrete
8 cu.yds. excavation

Sta. 482+93
Extend 6' to left & 6' to right with standard 3'x3' conc. box culv.
9 cu.yds. 1-2-4 concrete
350 lbs. of steel
5 cu.yds. excavation

B.M. sta. 453+85
spike in 24" elm
27' to R. of Φ
Elev. = 1102.91

B.M. sta. 460+23
spike in 14" maple
28' to R. of Φ
Elev. = 1094.06

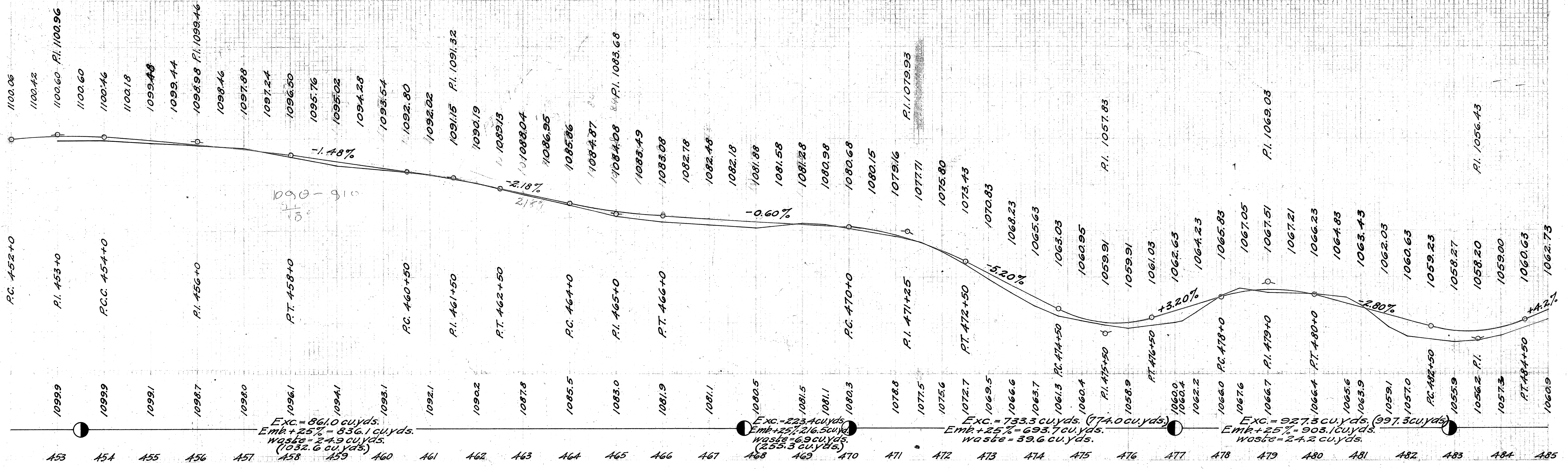
B.M. sta. 466+89
spike in 36" poplar
19' to R. of Φ
Elev. = 1081.52

B.M. sta. 471+59
spike in 16" maple
20' to L. of Φ
Elev. = 1080.40

B.M. sta. 476+33
x on N.W. cor. N. headwall
15' to L. of Φ
Elev. = 1058.99

B.M. sta. 479+16
spike in 18" maple
26' to R. of Φ
Elev. = 1066.69

B.M. sta. 482+93
x on N.W. cor. N. headwall
14' to L. of Φ
Elev. = 1056.07



Exc. = 86.0 cu.yds.
Emb + 25% = 836.1 cu.yds.
Waste = 24.9 cu.yds.
(1032.6 cu.yds.)

Exc. = 223.4 cu.yds.
Emb + 25% = 216.5 cu.yds.
Waste = 6.9 cu.yds.
(255.3 cu.yds.)

Exc. = 733.3 cu.yds. (774.0 cu.yds.)
Emb + 25% = 693.7 cu.yds.
Waste = 39.6 cu.yds.

Exc. = 927.3 cu.yds. (997.3 cu.yds.)
Emb + 25% = 903.1 cu.yds.
Waste = 24.2 cu.yds.