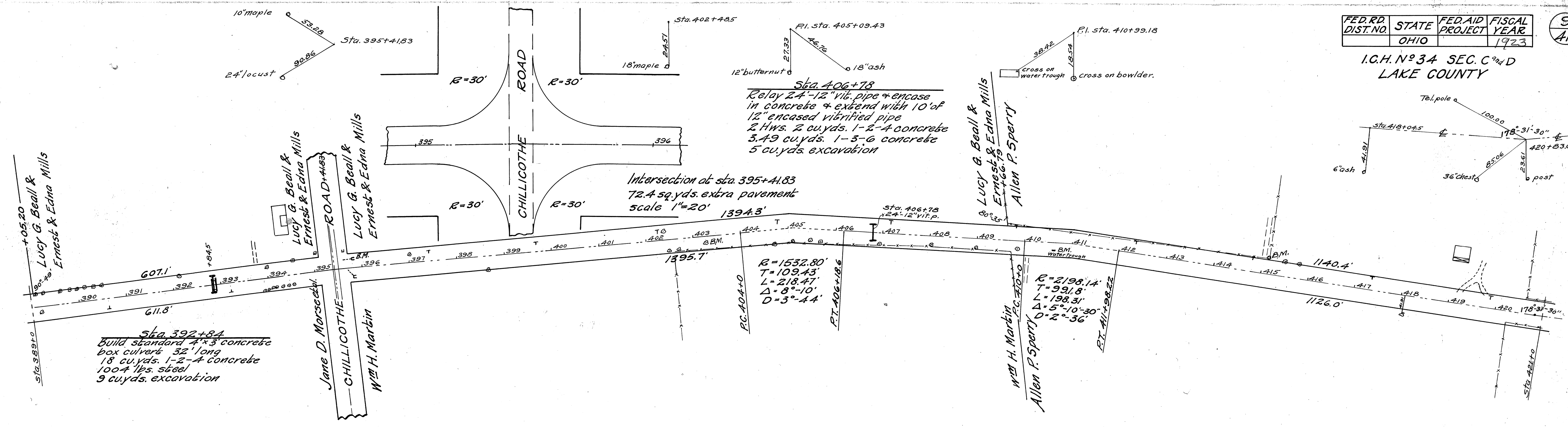


I.C.H. No 34 SEC. C AND D  
LAKE COUNTY



Sta. 392+84  
Build standard 4'x3' concrete box culvert 32' long  
18 cu. yds. 1-2-4 concrete  
1004 lbs. steel  
9 cu. yds. excavation

B.M. Sta. 395+80  
x on U-inlet  
16'60" L of  $\Phi$   
Elev. = 1063.91

B.M. Sta. 403+26  
spike in 30" maple  
15' to R. of  $\Phi$   
Elev. = 1077.71

B.M. Sta. 410+01  
x on water trough  
15' to R. of  $\Phi$   
Elev. = 1076.57

B.M. Sta. 415+13  
spike in 18" maple  
32' to L. of  $\Phi$   
Elev. = 1095.23

