

FED. RD. DIST. NO.	STATE	FED. AID PROJECT	FISCAL YEAR
	OHIO		

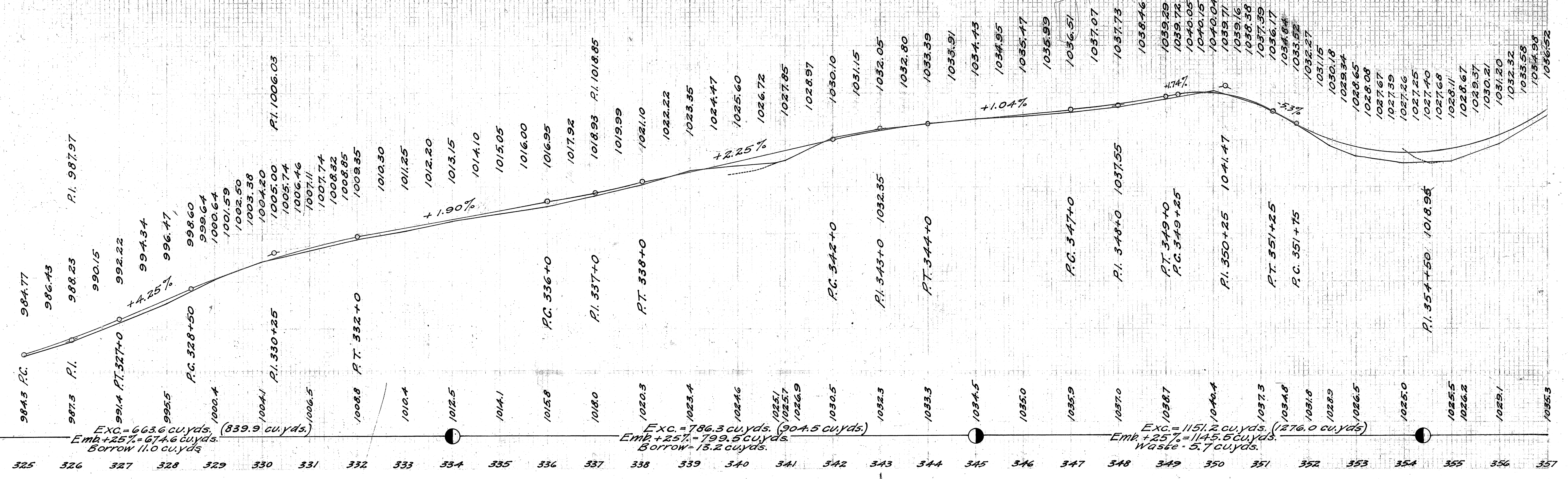
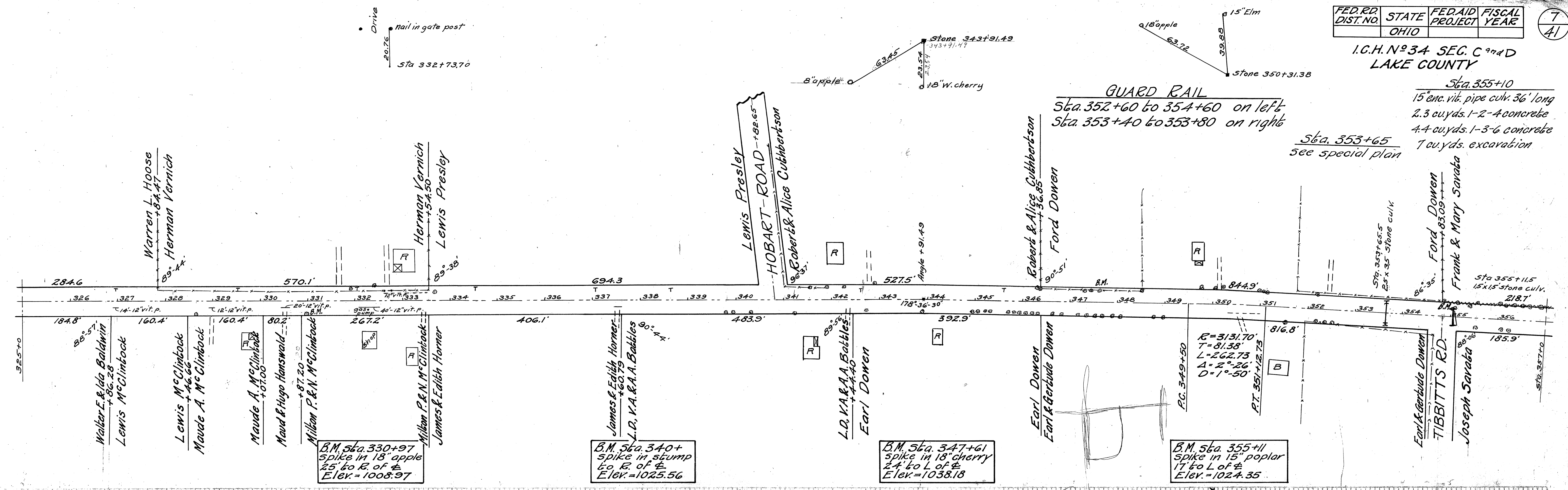
7
41

I.C.H. N^o 34 SEC. C 7th D
LAKE COUNTY

GUARD RAIL
Sta. 352+60 to 354+60 on left
Sta. 353+40 to 353+80 on right

Sta. 353+65
see special plan

Sta. 355+10
15" enc. vit. pipe culv. 36' long
2.3 cu.yds. 1-2-4 concrete
4.4 cu.yds. 1-3-6 concrete
7 cu.yds. excavation



Exc. = 663.6 cu.yds. (839.9 cu.yds.)
Emb + 25% = 674.6 cu.yds.
Borrow = 11.0 cu.yds.

Exc. = 786.3 cu.yds. (904.5 cu.yds.)
Emb + 25% = 799.5 cu.yds.
Borrow = 13.2 cu.yds.

Exc. = 1151.2 cu.yds. (1276.0 cu.yds.)
Emb + 25% = 1145.5 cu.yds.
Waste = 5.7 cu.yds.