

I.C.H. NO 34 SEC. C and D
LAKE COUNTY

LEFT		STATION		GRADE ELEV.		RIGHT	
edge of pav. width	width	station	grade elev.	width	edge of pav.	width	edge of pav.
866.97	8.00	294+44.21	867.14	8.00	866.97		
867.22	8.00	294+50	867.39	8.00	867.26		
869.12	8.00	294+94.21	869.29	8.00	869.47		
869.37	8.00	295+00	869.54	8.00	869.77		
871.52	8.00	295+50	871.69	8.00	872.22		
873.67	8.00	296+00	873.84	8.00	874.37		
875.82	8.00	296+50	875.99	8.00	876.52		
877.81	8.00	297+00	877.98	8.00	878.51		
879.48	8.00	297+50	879.65	8.00	880.18		
880.82	8.00	298+00	880.99	8.00	881.52		
881.84	8.00	298+50	882.01	8.00	882.54		
882.71	8.00	299+00	882.88	8.00	883.41		
883.57	8.00	299+50	883.74	8.00	884.27		
884.44	8.00	300+00	884.61	8.00	884.86		
884.58	8.00	300+07.98	884.75	8.00	884.93		
885.30	8.00	300+50	885.47	8.00	885.36		
885.44	8.00	300+57.98	885.61	8.00	885.44		

No extra pavement

Sba. 323+40
Relay 4" 12" vit. pipe + encase in concrete. 2 headwalls.
2 cu. yds. 1-2-4 concrete
4.8 cu. yds. 1-3-6 concrete
6 cu. yds. excavation

B.M. 294+15
spike in root of 24" maple
38' to L of #
Elev. = 867.04

B.M. Sta. 297+53
x on top of stone monument
40' to R of #
Elev. = 882.39

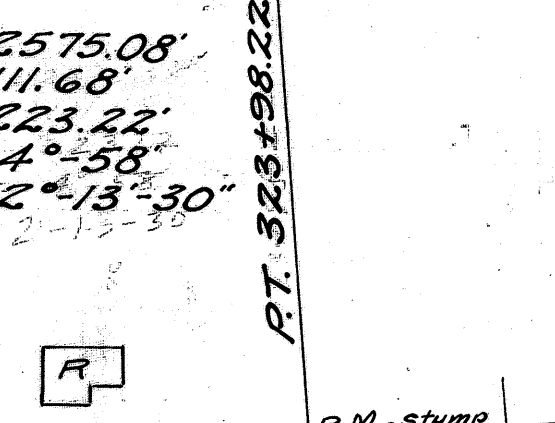
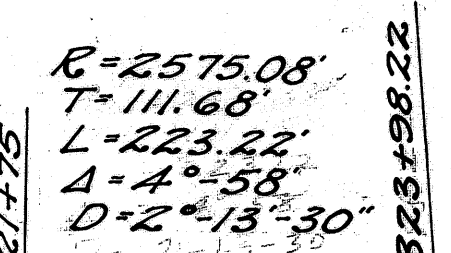
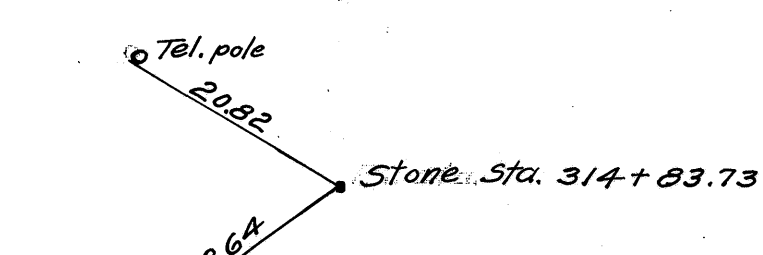
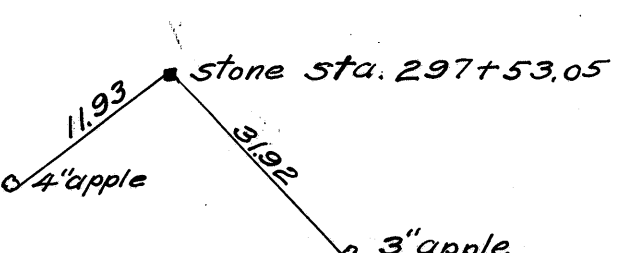
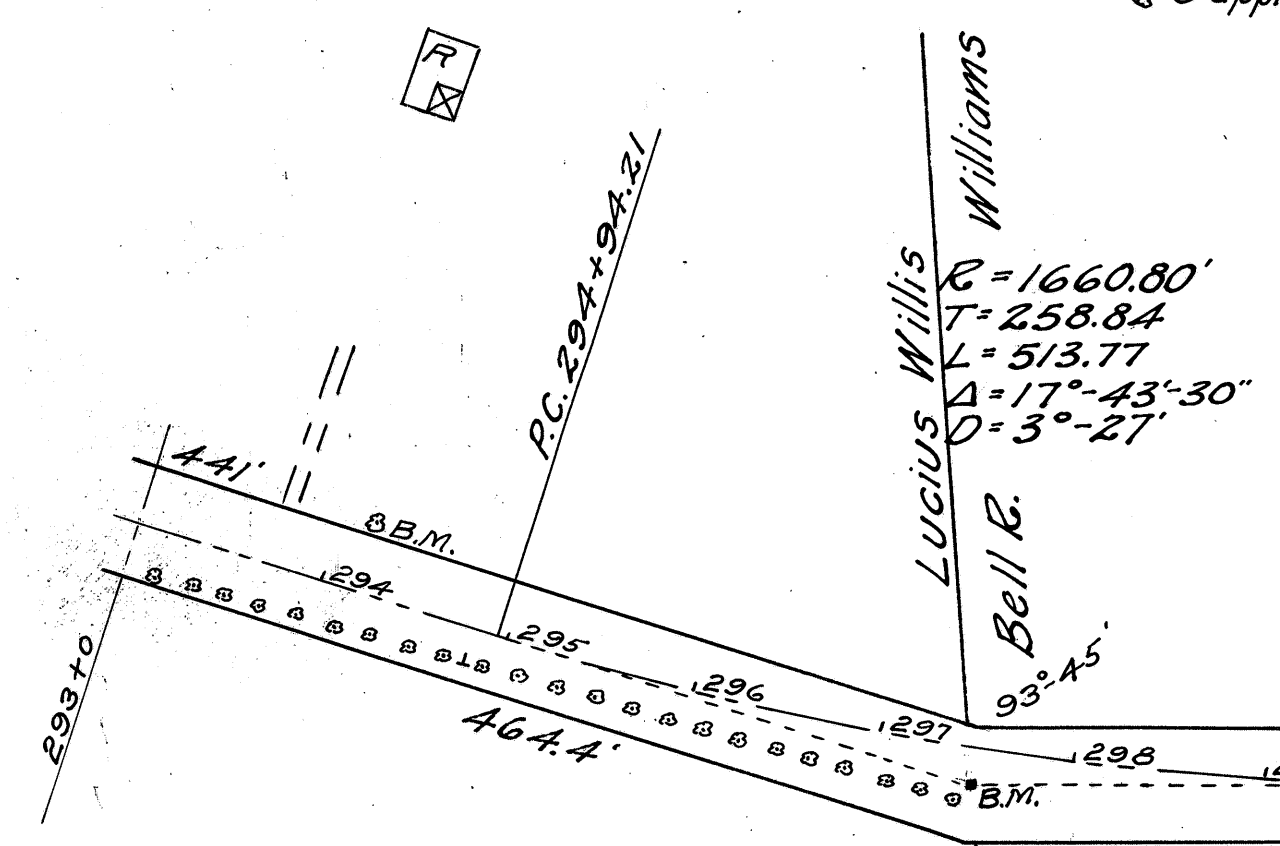
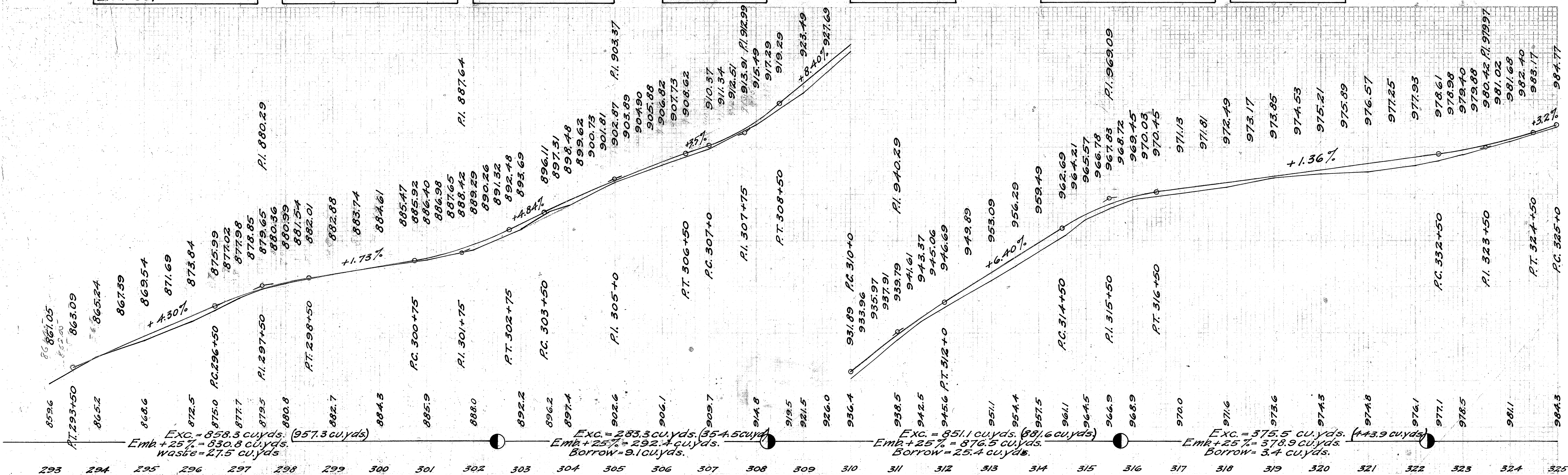
B.M. Sta. 302+86
spike in top of stump
33' to R of #
Elev. = 885.52

B.M. Sta. 311+60
spike in maple
28' to L of #
Elev. = 945.66

B.M. Sta. 315+60
spike in stump
to R of #
Elev. = 971.40

B.M. Sta. 319+49
x on bottom step to church
70' to L of #
Elev. = 974.39

B.M. Sta. 324+46
spike in stump
28' to L of #
Elev. = 983.61



Lucius Willis
Bell E. Williams
Michael J. & A. Conley
Sydney E. Hilburn

Bell E. Williams
Edward J. Williams

Edward J. Williams
Adolph & Louise Both

Adolph & Louise Both
Warren L. Hoose

Warren L. Hoose
Grace L. Cox
Warren L. Hoose

Frank & Alice Biglake
Cemetery
Walker E. Baldwin

W.E. Baldwin
W.E. & Ida B. Baldwin