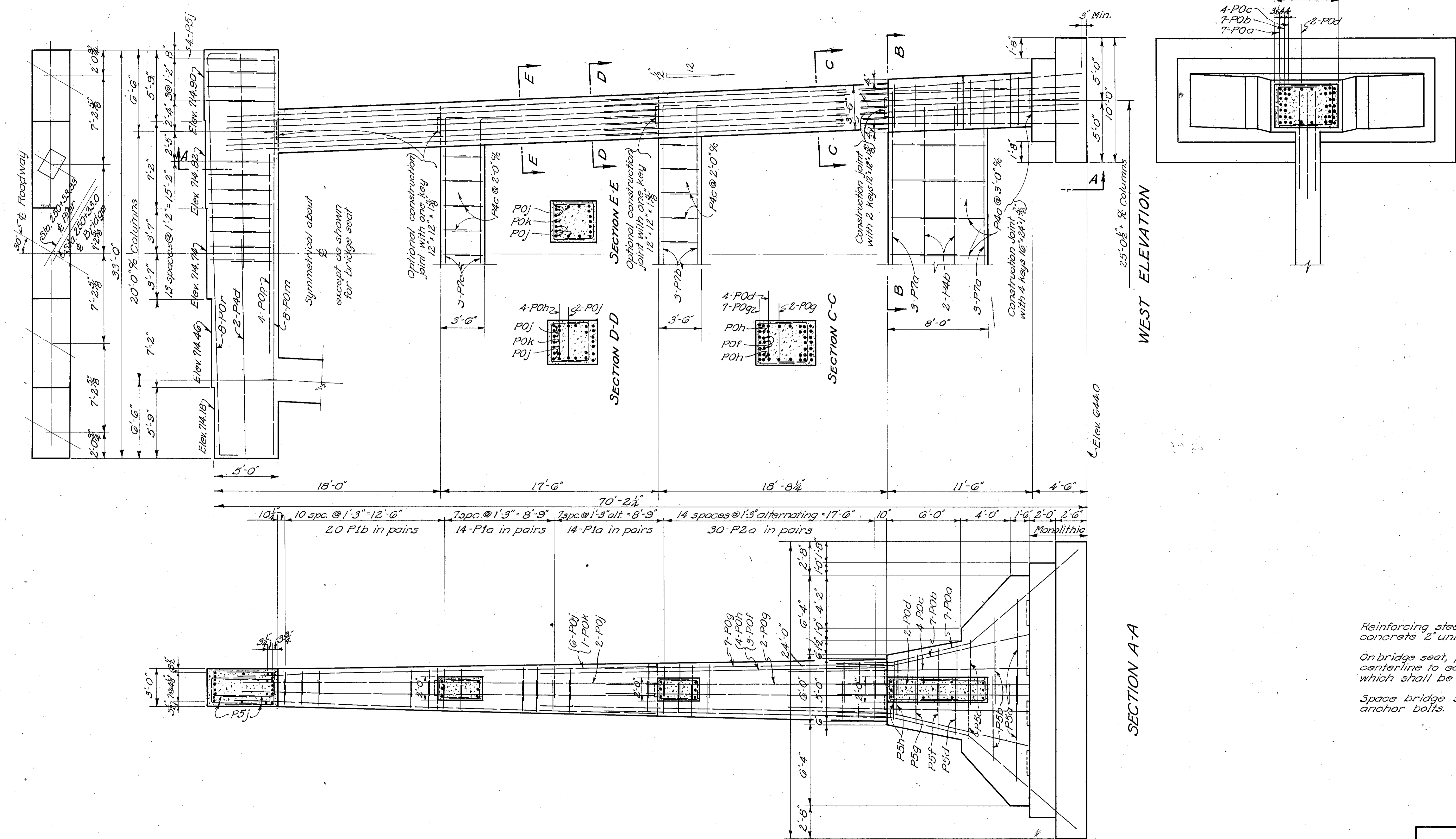


LAKE COUNTY
LAK-6-(3.60-3.76)
LAK-174-1.50



SECTIONAL PLAN B-B

WEST ELEVATION

SECTION A-A

Reinforcing steel shall clear surface of concrete 2" unless otherwise noted.
On bridge seat, provide 1/2" wash from centerline to edge except at bearings which shall be level.
Space bridge seat reinforcing to clear anchor bolts.

STATE OF OHIO DEPARTMENT OF HIGHWAYS BUREAU OF BRIDGES AND RAILROAD CROSSINGS					
DETAILS OF PIER 2 BRIDGE NO. LA-6-47 OVER CHAGRIN RIVER LAKE COUNTY SEC. LAK-6(3.60-3.76) STA. 250+33.0					
DESIGNED	DRAWN	TRACED	CHECKED	REVIEWED	DATE
J.D.J.	C.F.B.	J.D.J.	C.F.B.	W.H.R.	4-11-50