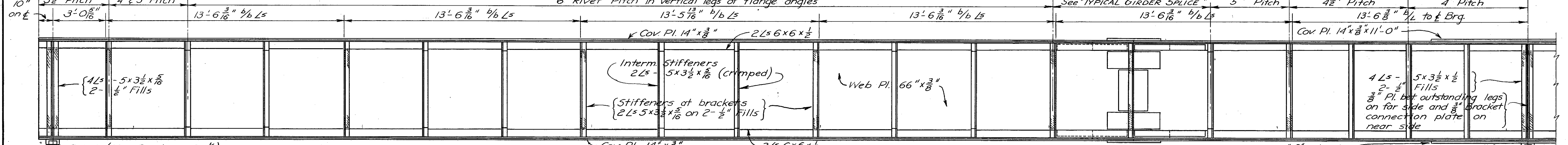
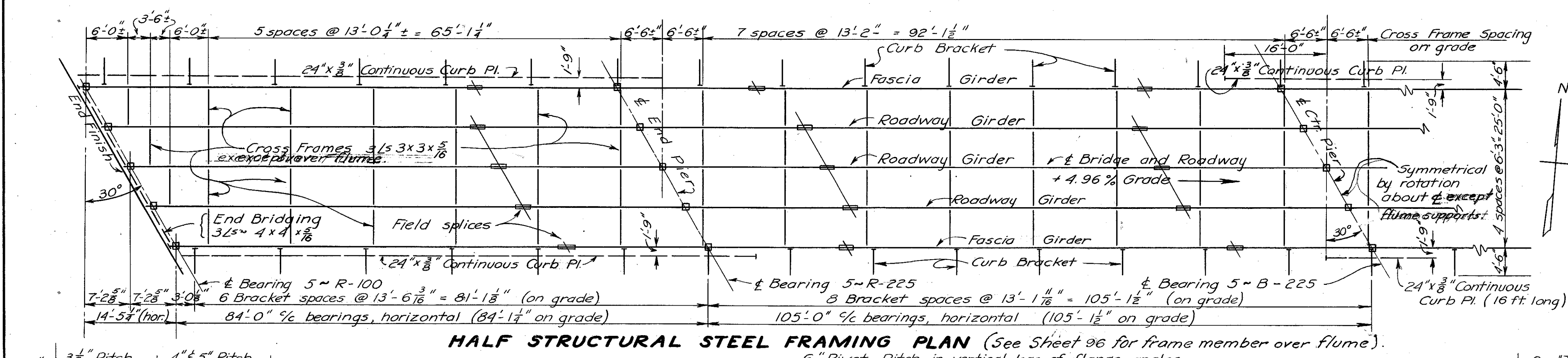
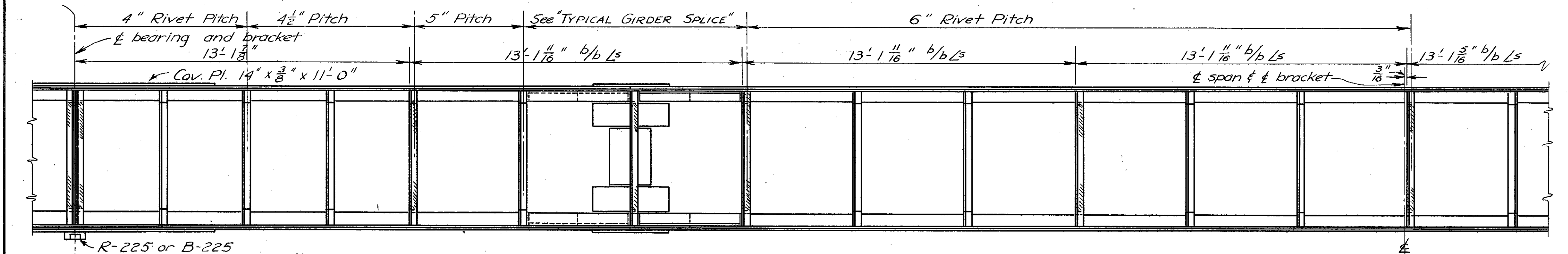


LAKE COUNTY  
LAK-6-(3.60-3.76)  
LAK-174-1.50

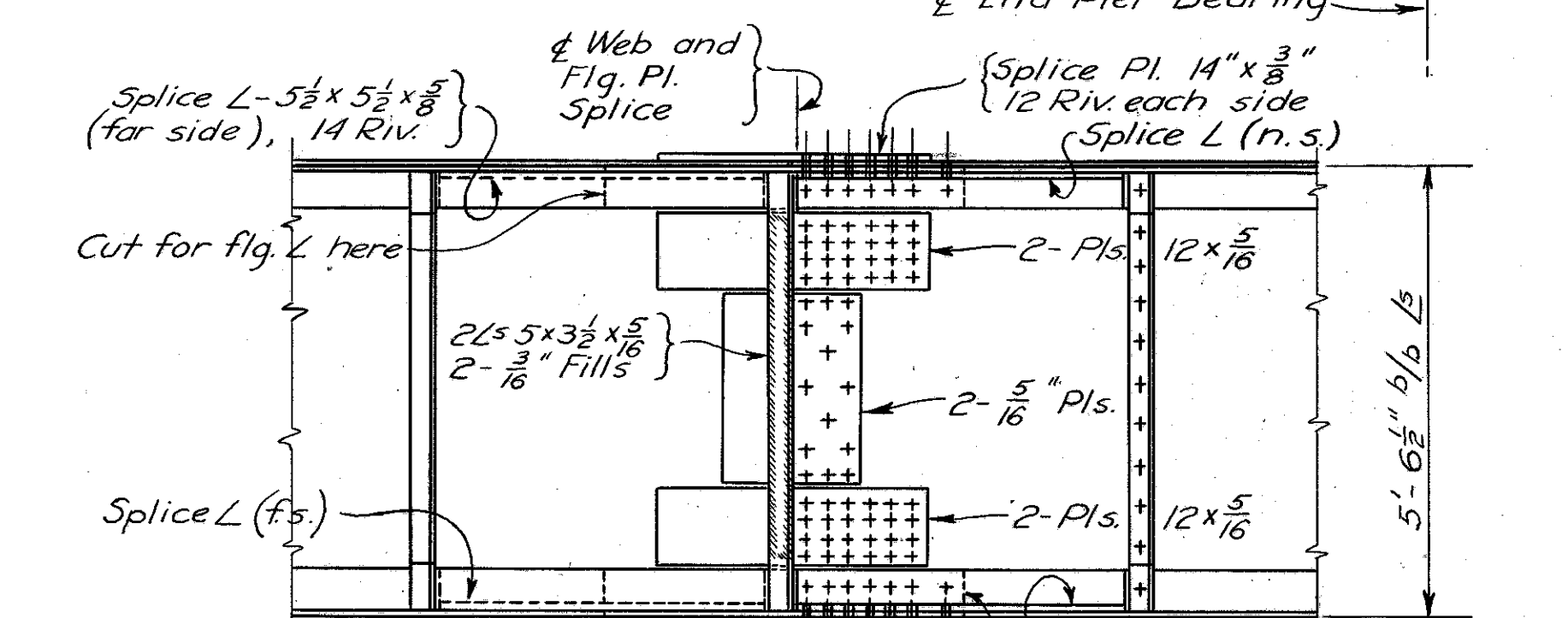
Dead Load deflection is less than one-half inch. No camber is required.  
Intermediate cross frame angles may be shifted to miss stiffener angles.  
Any of the field splices in girders may be omitted at the option of the Contractor.



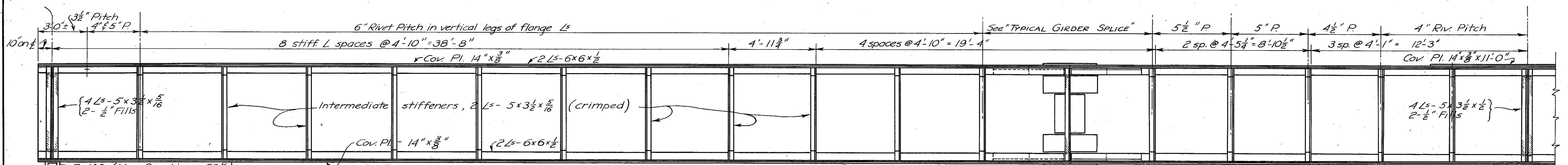
TYPICAL ELEVATION of 84 FT. SPAN FASCIA GIRDER



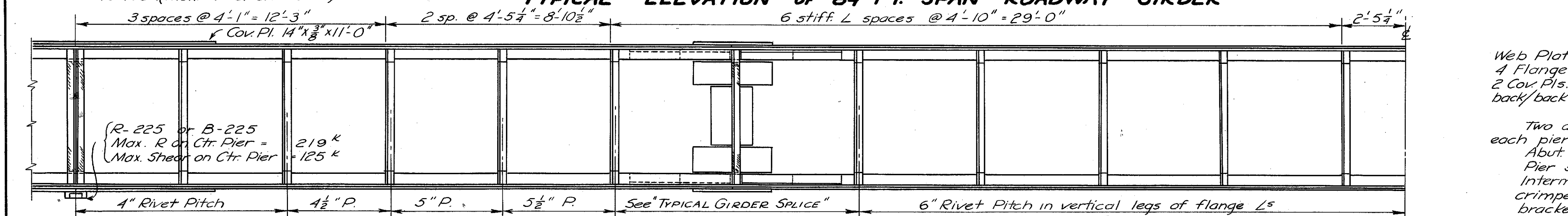
TYPICAL HALF ELEVATION of 105 FT. SPAN FASCIA GIRDER



TYPICAL GIRDER SPLICE



TYPICAL ELEVATION of 84 FT. SPAN ROADWAY GIRDER



TYPICAL HALF ELEVATION of 105 FT. SPAN ROADWAY GIRDER

**GIRDER DATA**  
Web Plate, 66" x 3/8"  
4 Flange Ls - 6 x 6 x 1/2  
2 Cov. Pls., 14" x 3/8"  
back/back Ls = 5'-6 1/2"  
Full length of all girders for 84 ft. and 105 ft. spans.  
Two additional 14" x 3/8" cover plates at each pier.  
Abut stiffeners - 4 Ls - 5 x 3 1/2 x 5/16 on 1/2" fills.  
Pier stiffeners - 4 Ls - 5 x 3 1/2 x 5/16 on 1/2" fills.  
Intermediate stiffeners are 2 Ls - 5 x 3 1/2 x 5/16 crimped, except at web splices and curb bracket connections.  
RIVETS :- 7/8" Dia.

STATE OF OHIO DEPARTMENT OF HIGHWAYS BUREAU OF BRIDGES AND RAILROAD CROSSINGS					
<b>GIRDERS</b> <b>HALF STRUCT. STEEL FRAMING PLAN</b>					
BRIDGE NO. LA-6-47 OVER CHAGORA RIVER					
LAKE COUNTY SECTION LAK-6-(3.60-3.76) STA. 250 + 33 F-366 (1)					
DESIGNED	DRAWN	TRACED	CHECKED	REVIEWED	DATE
K.E.D.	K.E.D.	ER	C.F.B.	W.H.C.	4-11-50
					4-19-50