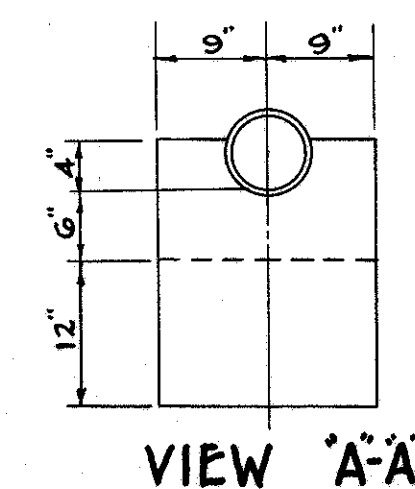


FED. RD. DIVISION	STATE	FEDERAL AID PROJECT	TYPE FUNDS
2	OHIO	F-366(1)	POST WAR

80
97

LAKE COUNTY
LAK. - G-(3.60-3.76)

NOTE:
Notes applying to "Pipe Culvert Ends,"
Standard Drawing S-27 PC.2 shall apply.



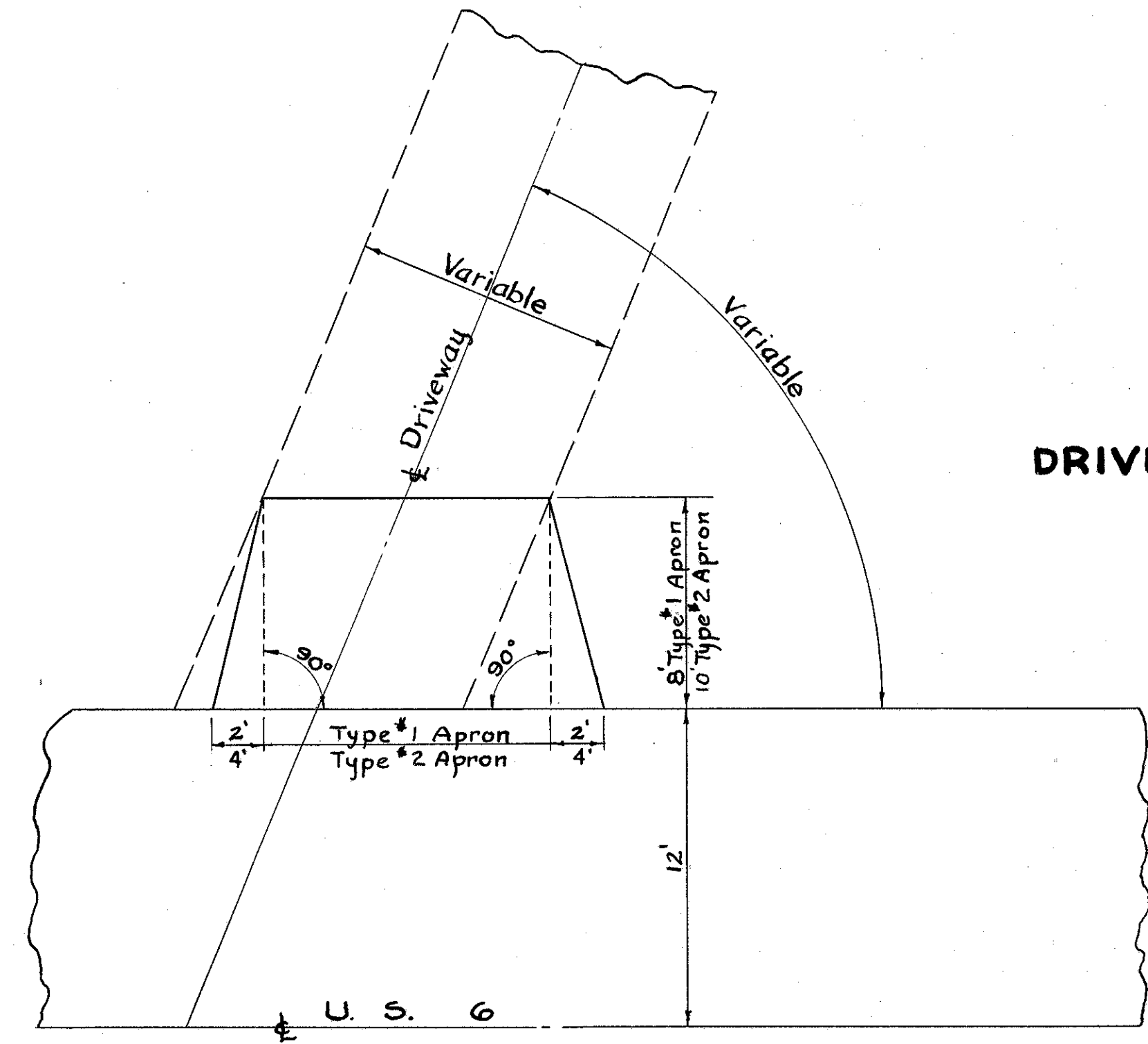
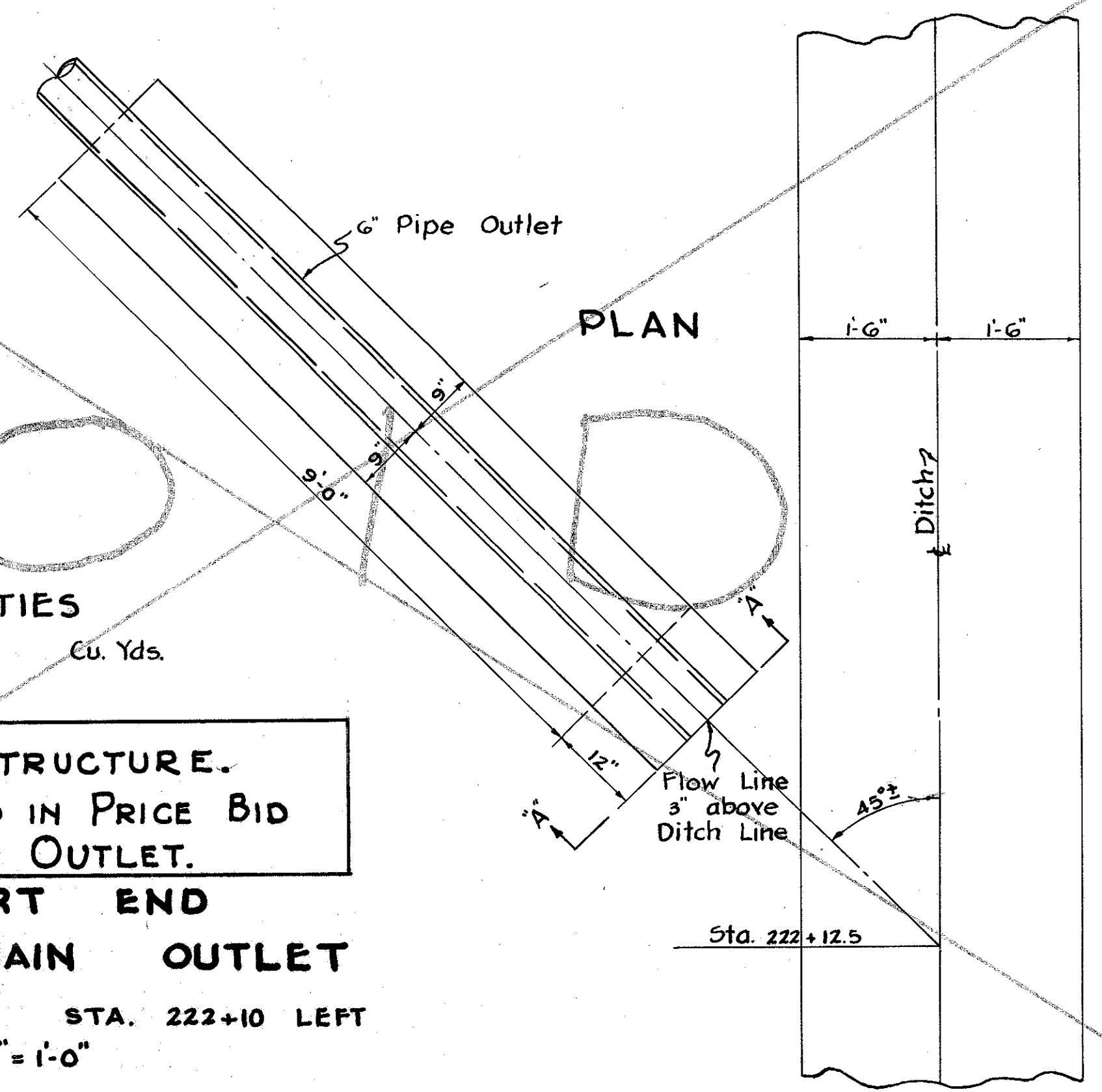
ESTIMATED QUANTITIES

S-1 Concrete for Structures Cu. Yds.

NOTE - VOID THIS STRUCTURE.
CONCRETE INCLUDED IN PRICE BID
PER FOOT OF DRAIN OUTLET.
PIPE CULVERT END

FOR 6" PIPE UNDERDRAIN OUTLET

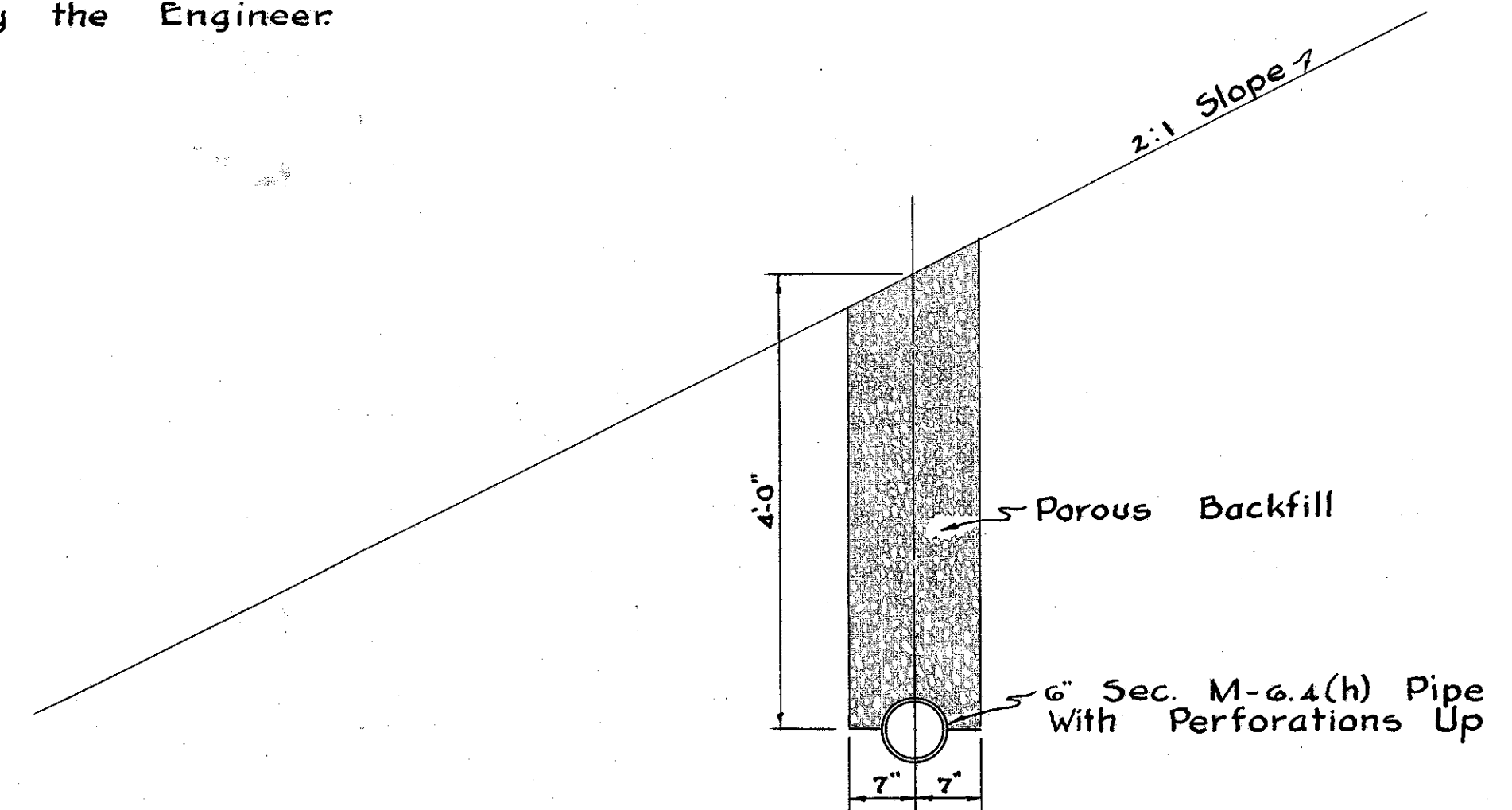
SHEET NO 10 STA. 222+10 LEFT
SCALE: 3/4" = 1'-0"



DRIVEWAY APRONS DETAIL

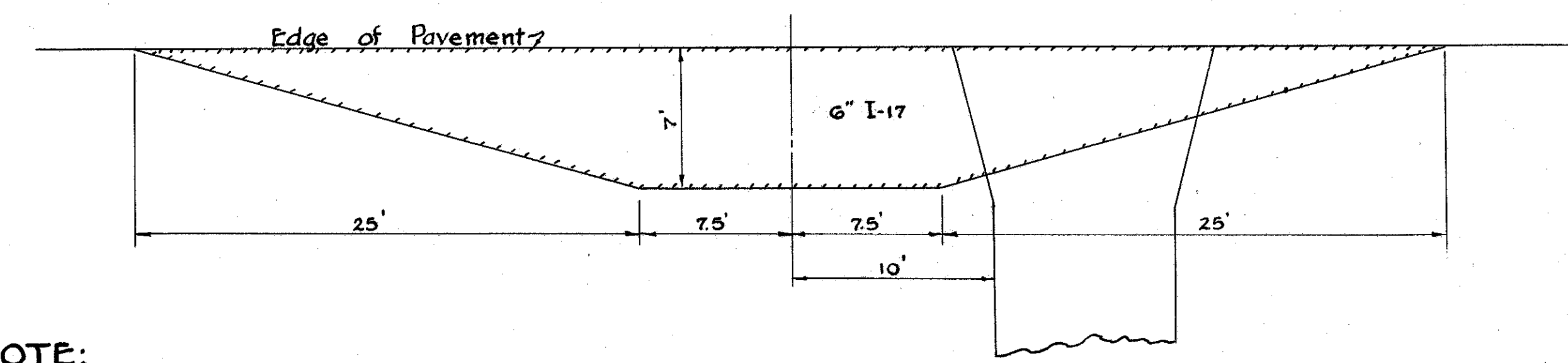
SCALE: 1" = 5'

NOTE:
Location of intercepting drain shown on Cross Sections
is as determined by soils test investigation. The purpose
of the drain is to intercept ground water between the
gravel and silt layers, the pipe being placed 2'-0"± into
the silt layer.
After the cut is opened during construction a slight
change may be found necessary to meet field
conditions, in which case location of drain shall be
changed as directed by the Engineer.



INTERCEPTING DRAIN DETAIL

SCALE: 3/4" = 1'-0"
STA. 254+50 TO STA. 260+00 (NORTH SIDE)
STA. 253+50 TO STA. 260+00 (SOUTH SIDE)



NOTE:
Where feasible drives will be combined
with Mail Box Turnouts in the manner
shown. Quantities will be adjusted by
the Engineer.

DETAIL MAIL BOX TURNOUTS

SCALE: 1" = 6'