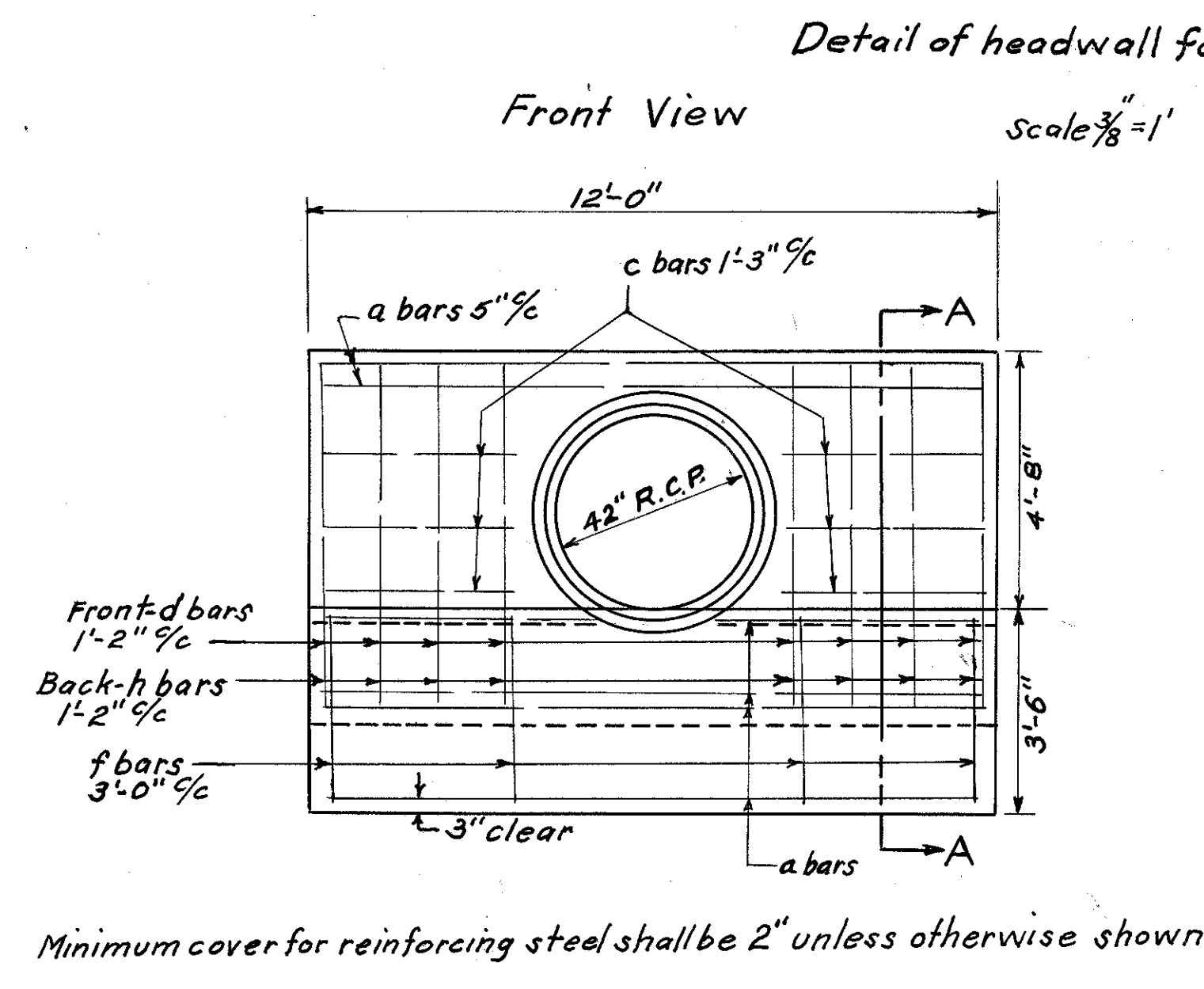
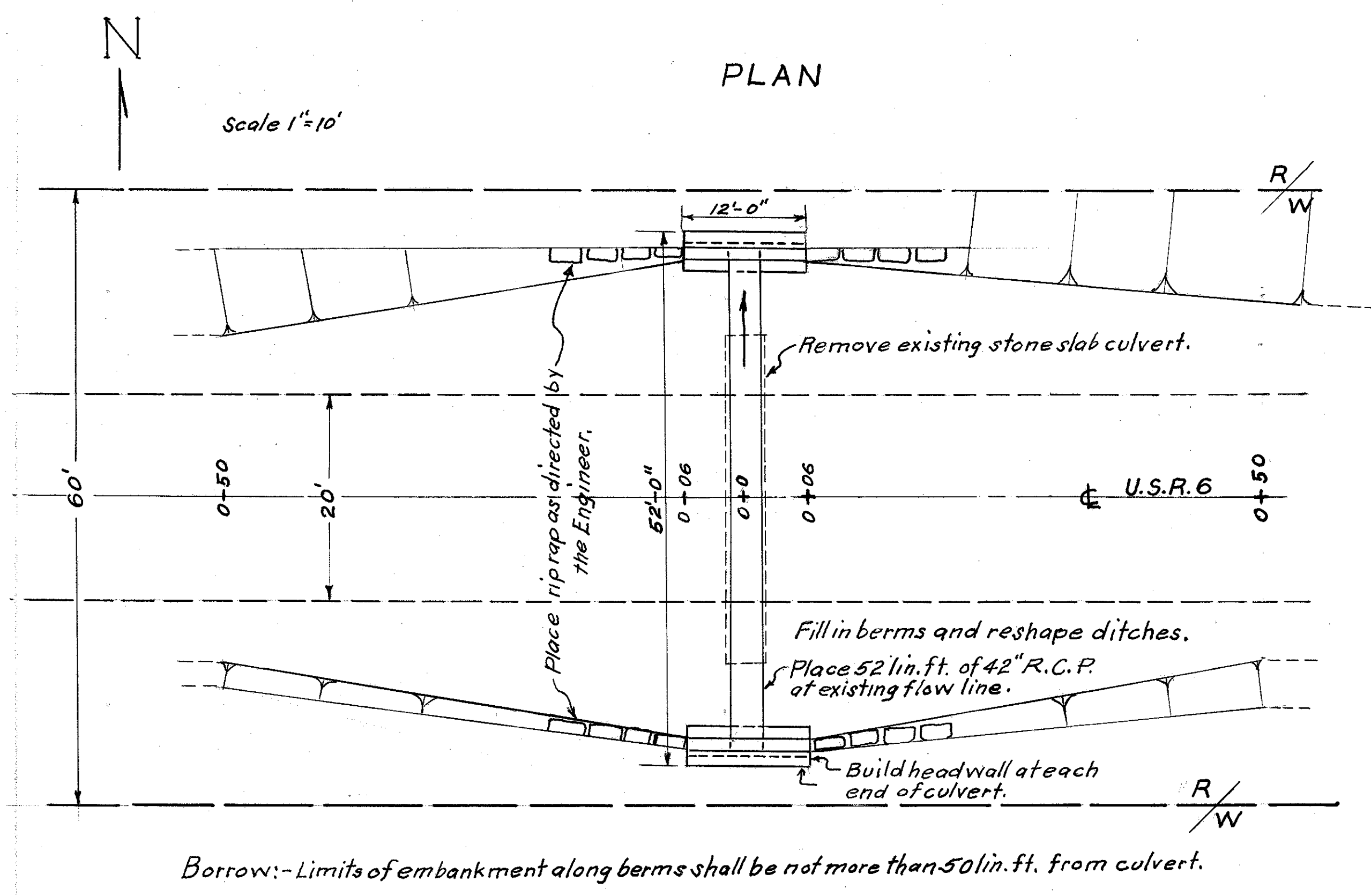


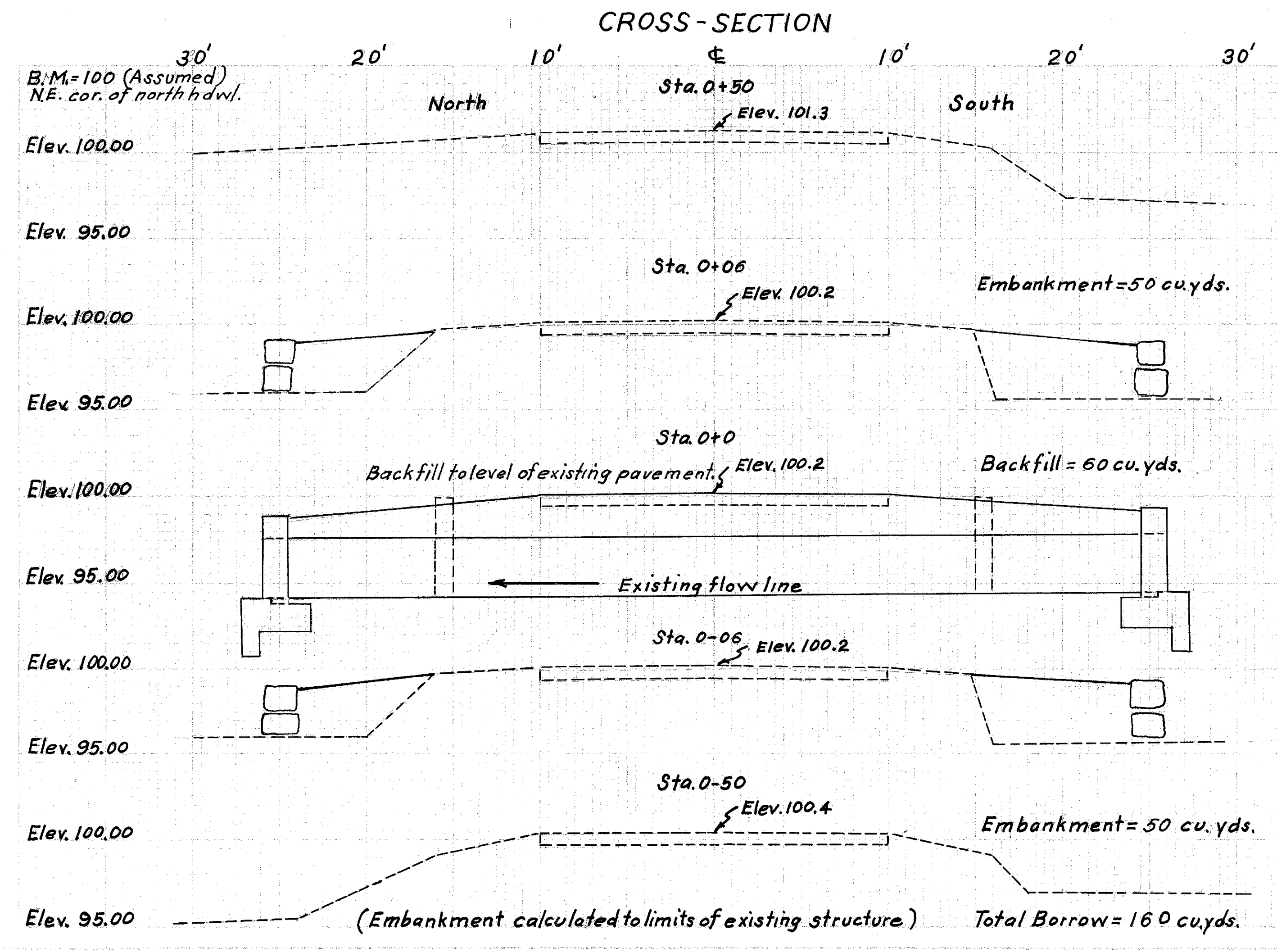
PROPOSAL NO. 3
LAKE COUNTY - U.S.R. 6
SECTION-0.00 (WILLOUGHBY HILLS)
STRUCTURE NO. LAK. 6-0280



BAR LEGEND

Mark	Size	No.	Length	Wt. Lbs.
a-st.	5	11	11'-8"	133.848
c-st.	5	12	3'-7"	44.844
d-bt.	5	8	6'-8"	55.625
f-bt.	5	4	4'-1"	17.036
h-bt.	5	8	8'-6"	70.928
Total Wt. =				322.281

Note: Quantities listed are for one headwall only.



ESTIMATED QUANTITIES

Item No.	Quantities	Description
E-2	16 cu. yds.	Excavation (Wet)
E-4	160 cu. yds.	Borrow (Backfill and embankment)
S-1	12.5 cu. yd.	Concrete, class 'C' (Headwalls)
S-4	645 lbs.	Reinforcing steel (Headwalls)
S-24	Lump	Removal of existing stone culvert. (Including pavement removal and any necessary excavation.)
S-27	52 lin. ft.	42" Reinforced concrete pipe M-6.6 (C)
I-10	20 sq. yds.	Rip rap - (Salvaged stone)