

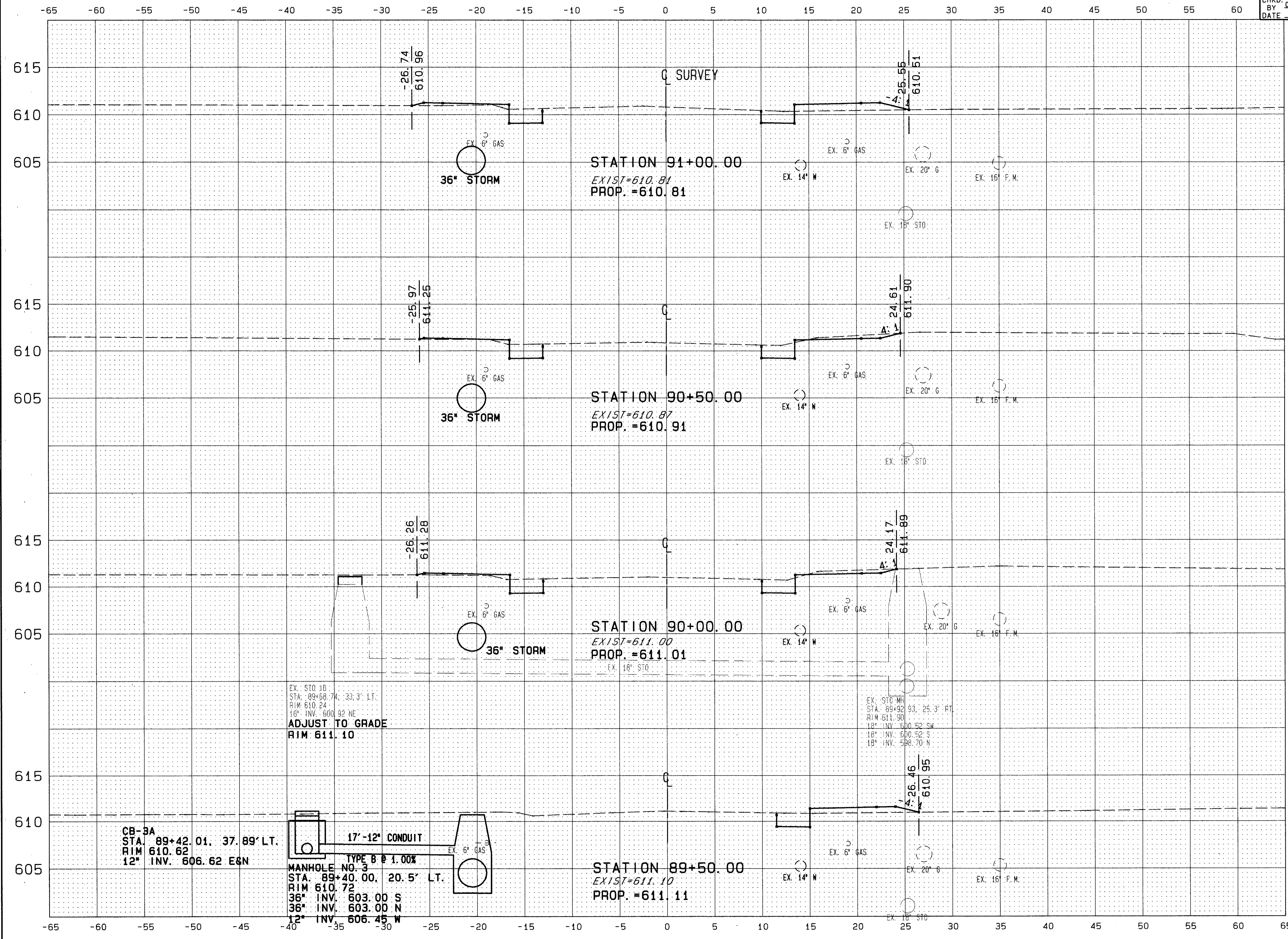
CALC. J.J.C.  
 BY  
 DATE 1/93  
 CHKD. C.C.H.  
 BY  
 DATE 1/93

LAK - 535 - 0.55

OHIO

51  
90

FHWA REGION 5



| END AREA |          | VOLUME   |          |
|----------|----------|----------|----------|
| SQ. YDS. | CU. YDS. | SQ. YDS. | CU. YDS. |
| CUT      | FILL     | CUT      | FILL     |
| 1.73     | 1.14     |          |          |
|          |          | 31.5     | 10.5     |
| 2.04     | 0.13     |          |          |
|          |          | 29.8     | 6.75     |
|          |          |          |          |
|          |          | 24.5     | 11.3     |
| 1.47     | 0.68     |          |          |
|          |          |          |          |
| 1.47     | 0.68     |          |          |
|          |          | 27.0     | 14.6     |

P.P.A.  
 No. 271

EX. STO. ID.  
 STA. 89+50.74, 33.3' LT.  
 RIM 610.24  
 18" INV. 600.92 NE  
 ADJUST TO GRADE  
 RIM 611.10

EX. STO. MH  
 STA. 89+92.93, 25.3' RT.  
 RIM 611.90  
 18" INV. 600.52 SW  
 18" INV. 600.52 S  
 18" INV. 598.70 N

CB-3A  
 STA. 89+42.01, 37.89' LT.  
 RIM 610.62  
 12" INV. 606.62 EQN

17'-12" CONDUIT  
 TYPE B @ 1.00%  
 MANHOLE NO. 3  
 STA. 89+40.00, 20.5' LT.  
 RIM 610.72  
 36" INV. 603.00 S  
 36" INV. 603.00 N  
 12" INV. 606.45 W

STATION 89+50.00  
 EXIST=611.10  
 PROP.=611.11

STATION 91+00.00  
 EXIST=610.81  
 PROP.=610.81

STATION 90+50.00  
 EXIST=610.87  
 PROP.=610.91

STATION 90+00.00  
 EXIST=611.00  
 PROP.=611.01

90483 FRI 01/29/93 02:02 PM JACK FILES: X78.PLT XDOTS.PLT

CROSS SECTION STA. 89+50 TO STA. 91+00