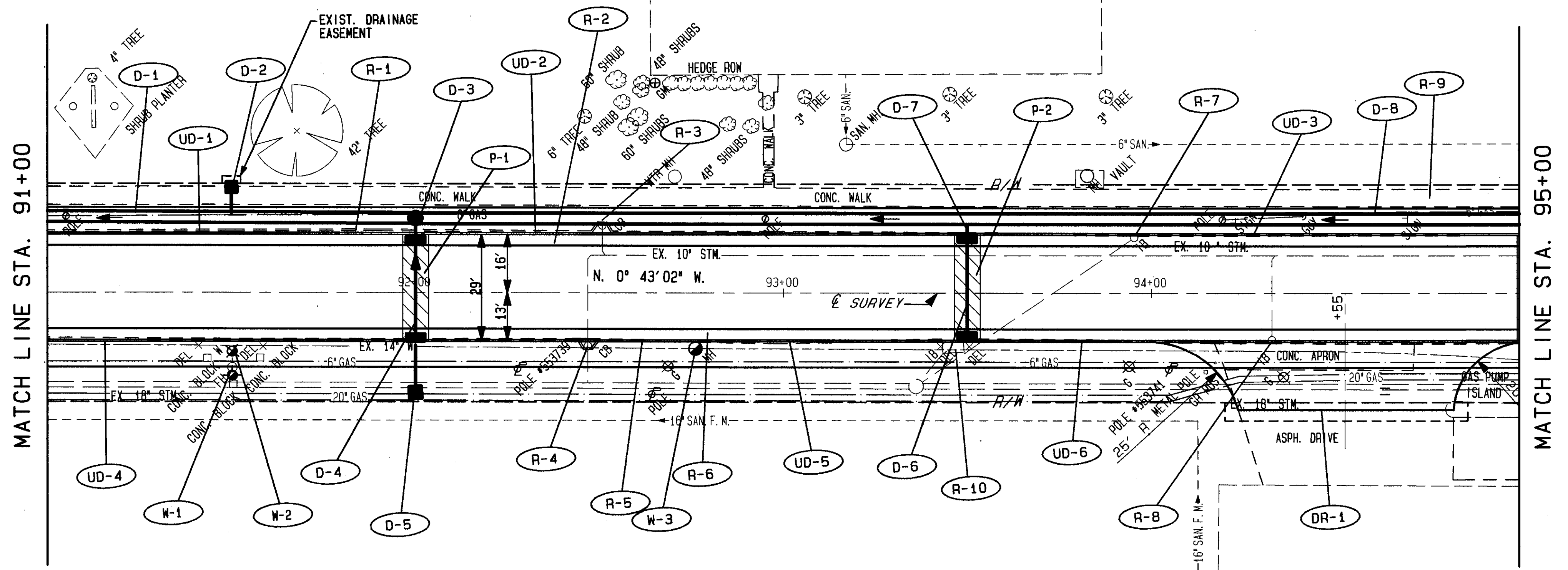




PLAN NO. 271



FOR TYPICAL SECTIONS SEE SHEET 3
 FOR QUANTITY SUB-SUMMARIES SEE SHEET 75 THRU 87
 FOR PAVEMENT MARKING DETAILS SEE SHEET 73 & 74
 FOR CATCH BASIN DETAILS SEE SHEET 69
 FOR DRIVEWAY DETAILS SEE SHEET 68
 FOR WATERWAY REPAIR DETAILS SEE SHEET 66
 FOR WATERWORK DETAILS SEE SHEET 71 & 72
 FOR DRIVE PROFILES SEE SHEET 61
 FOR STORM SEWER CROSS CONNECTIONS SEE SHEET 52 & 53
 FOR CROSS SECTIONS SEE SHEET 51 THRU 53

NOTE: LOCATION OF THE EXISTING SANITARY CONNECTION FOR #600 EAST STREET IS NOT KNOWN. THE CONTRACTOR SHALL VERIFY ITS LOCATION PRIOR TO CONSTRUCTION OF THE PROPOSED 36" STORM SEWER.

| PROPOSED PROFILE ELEVATIONS | 610.81 | 610.71 | 610.61 | 610.65 | 610.69 | 610.77 | 610.85 | 610.93 | 611.01 |
|-----------------------------|--------|--------------|-------------------|--------------|-------------------|--------|--------|--------|-------------------|
| 620 | | | | | | | | | |
| 615 | | | | | | | | | |
| 610 | | GR. = -0.20% | PVI STA. 92+00.00 | GR. = +0.08% | PVI STA. 93+00.00 | | | | PVI STA. 95+00.00 |
| 605 | | | | | | | | | |
| 600 | | | | | | | | | |
| 595 | | | | | | | | | |
| 590 | | | | | | | | | |
| 585 | | | | | | | | | |
| EXISTING PROFILE ELEVATIONS | 610.81 | 610.71 | 610.61 | 610.63 | 610.69 | 610.72 | 610.85 | 611.03 | 611.01 |

| REF | LOCATION | L.F. | S.Y. | E.A. | TOTALS |
|-----|------------------------------------------------|------|------|------|--------|
| D-1 | STA. 91+00 TO STA. 92+00, 20.5' LT. | 100 | | | 100 |
| D-2 | STA. 91+50, 20' LT. TO STA. 91+50, 20.5' LT. | 8 | | | 8 |
| D-3 | STA. 92+00, 20' LT. TO STA. 92+00, 16' LT. | 4 | | | 4 |
| D-4 | STA. 92+00, 16' LT. TO STA. 92+00, 13' RT. | 29 | | | 29 |
| D-5 | STA. 92+00, 13' RT. TO STA. 92+00, 27.5' RT. | 14 | | | 14 |
| D-6 | STA. 93+50, 16' LT. TO STA. 93+50, 13' RT. | 29 | | | 29 |
| D-7 | STA. 93+50, 20.5' LT. TO STA. 93+50, 16' LT. | 4 | | | 4 |
| D-8 | STA. 92+00, 20.5' LT. TO STA. 95+00, 20.5' LT. | 300 | | | 300 |
| M-1 | STA. 91+50, 23' RT. | | | 1 | 1 |
| M-2 | STA. 91+50, 18' RT. | | | 1 | 1 |
| M-3 | STA. 92+77, 15' RT. | | | 1 | 1 |
| | | 58 | 30 | 400 | 58 |
| | | | | | TOTALS |

| REF | LOCATION | L.F. | S.Y. | E.A. | TOTALS |
|------|-------------------------------|------|------|------|--------|
| R-1 | STA. 91+00 TO STA. 95+00, LT. | 400 | | | 400 |
| R-2 | STA. 91+00 TO STA. 95+00, LT. | 134 | | | 134 |
| R-3 | STA. 92+51, 17' RT. | 1 | | | 1 |
| R-4 | STA. 92+47, 17' RT. | 400 | | | 400 |
| R-5 | STA. 91+00 TO STA. 95+00, RT. | 134 | | | 134 |
| R-6 | STA. 91+00 TO STA. 95+00, RT. | 1 | | | 1 |
| R-7 | STA. 93+95, 14' LT. | 1 | | | 1 |
| R-8 | STA. 91+00 TO STA. 95+00, LT. | 1 | | | 1 |
| R-9 | STA. 91+00 TO STA. 95+00, LT. | 2000 | | | 2000 |
| R-10 | STA. 93+46, 13.5' RT. | 1 | | | 1 |
| | | 800 | 268 | 5 | 800 |
| | | | | | TOTALS |

90483 THU 01/28/93 04:45 PM JACK FILES: RM12.PLT P001S.PLT PL12.PLT PR12.PLT